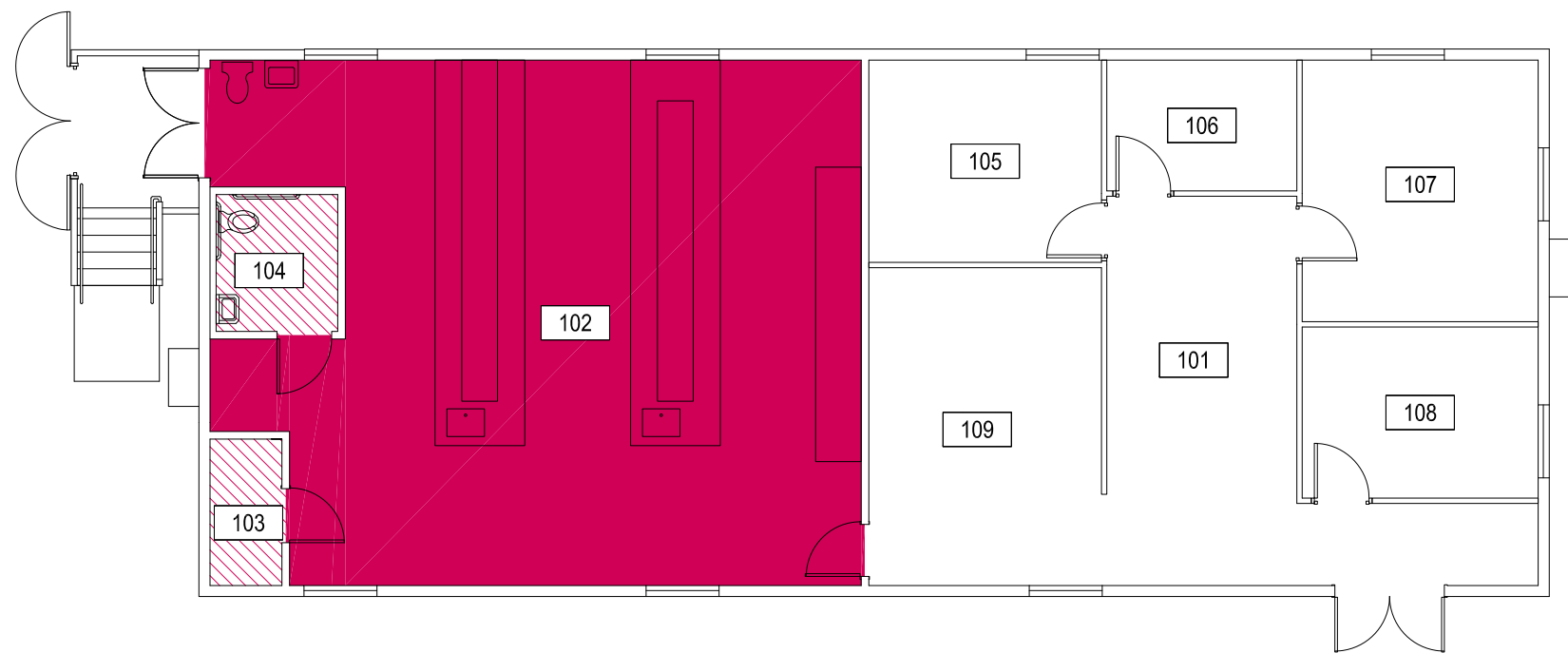


CLICK ON HAZARD LOCATION FOR CONTACT INFORMATION.

ADDITIONAL INFORMATION IS AVAILABLE THROUGH THE MSU BIOSAFETY OFFICER AT (406) 994-6998



Chemical



Radiation



1



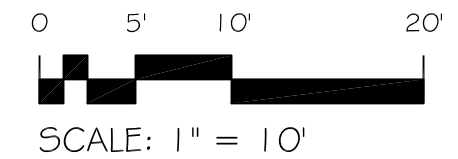
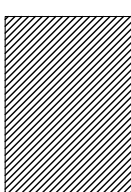
2



3



Indicates access only through hazard area.



Apr 10, 2015 - 8:50am - BH_151_1Wall.dwg
E:\Log - Feasibility\13-06-00\13-06-06 Biohazard Areas\130 Drawings\Marsh Modular #2A



MARSH MODULAR #2

LEVEL 1

CAMPUS PLANNING,
DESIGN & CONSTRUCTION
MONTANA STATE UNIVERSITY
BOZEMAN, MONTANA
PHONE: 406.994.5413 FAX: 406.994.5665

SHEET TITLE

SHEET
L1

DATE
01-06-15