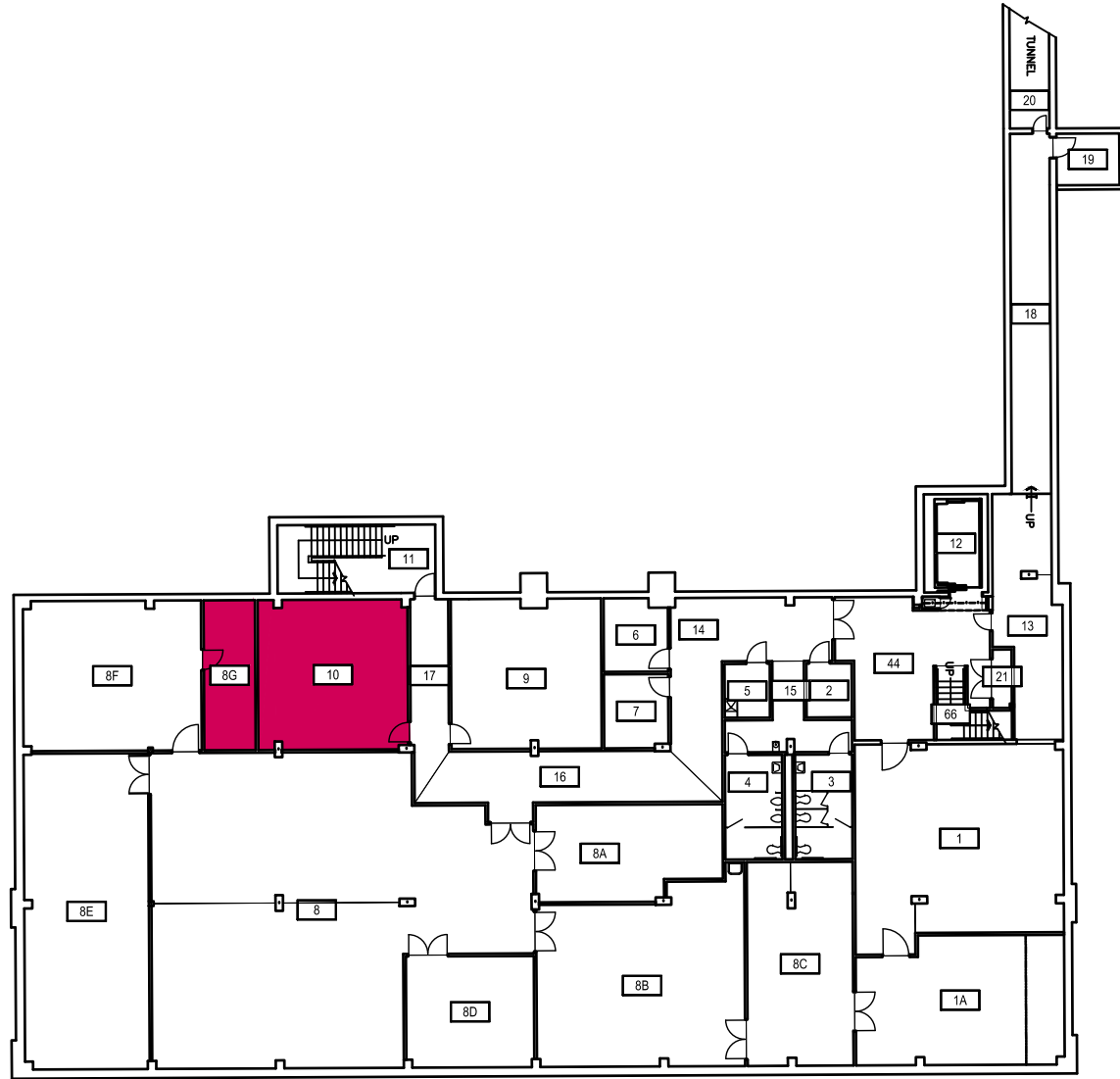


CLICK ON HAZARD LOCATION FOR CONTACT INFORMATION.

ADDITIONAL INFORMATION IS AVAILABLE THROUGH THE MSU  
BIOSAFETY OFFICER AT (406) 994-6998



Chemical



Radiation



1



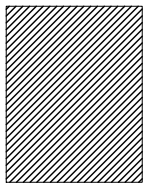
2



3



Indicates  
access  
only  
through  
hazard  
area.



# BARNARD HALL

LEVEL B

CAMPUS PLANNING,  
DESIGN & CONSTRUCTION  
MONTANA STATE UNIVERSITY  
PHONE: 406.994.5413 FAX: 406.994.5665

SHEET TITLE

SHEET  
**LB**

DATE  
01-06-15



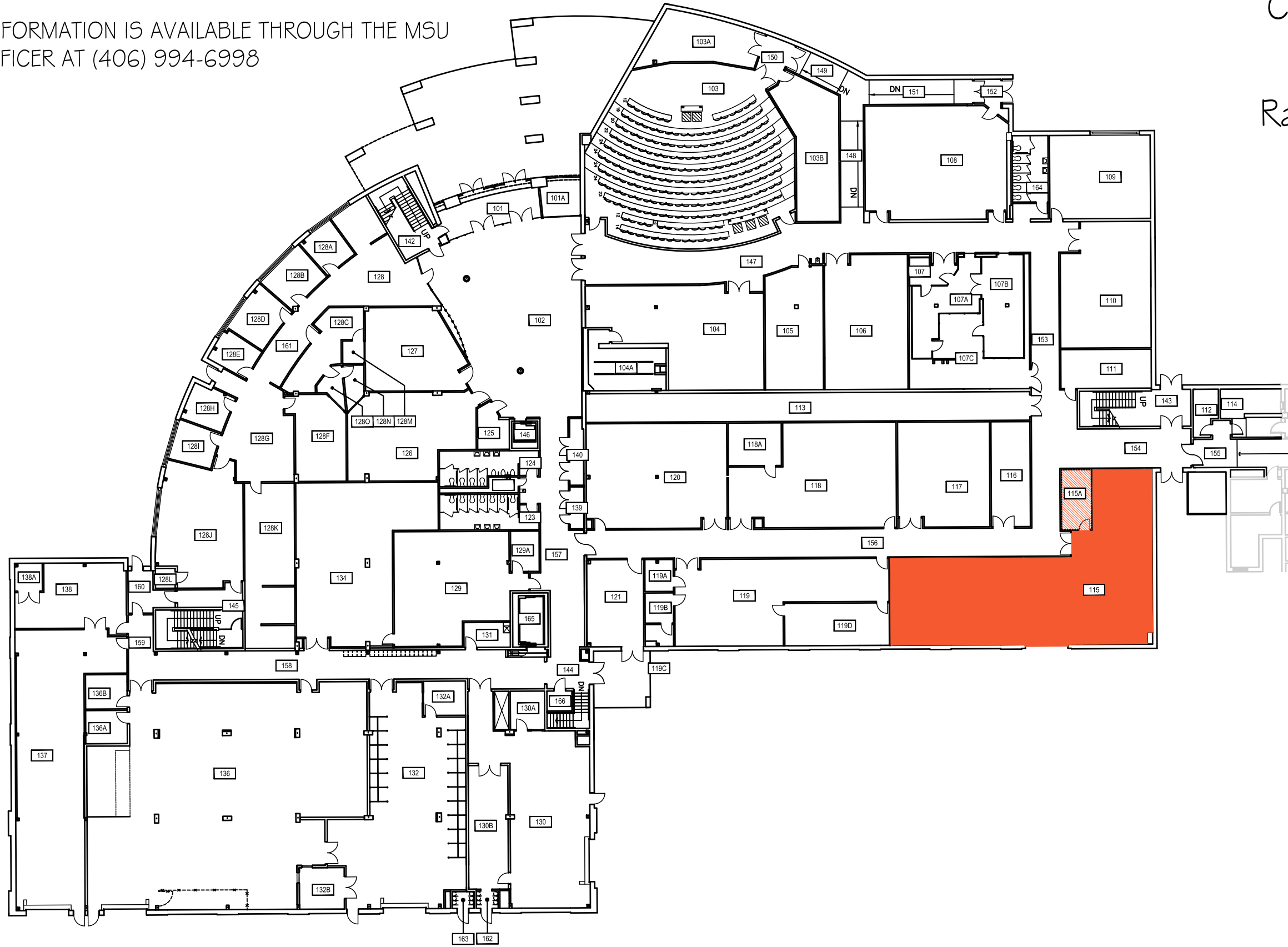
0 15' 30' 60'



SCALE: 1" = 30'

CLICK ON HAZARD LOCATION FOR CONTACT INFORMATION.

ADDITIONAL INFORMATION IS AVAILABLE THROUGH THE MSU BIOSAFETY OFFICER AT (406) 994-6998



Chemical



Radiation



1



2



3



Indicates access only through hazard area.



# BARNARD HALL

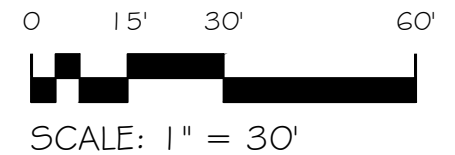
LEVEL 1

CAMPUS PLANNING,  
DESIGN & CONSTRUCTION  
MONTANA STATE UNIVERSITY  
PHONE: 406.994.5413 FAX: 406.994.5665

SHEET TITLE

SHEET  
**L1**

DATE  
01-06-15

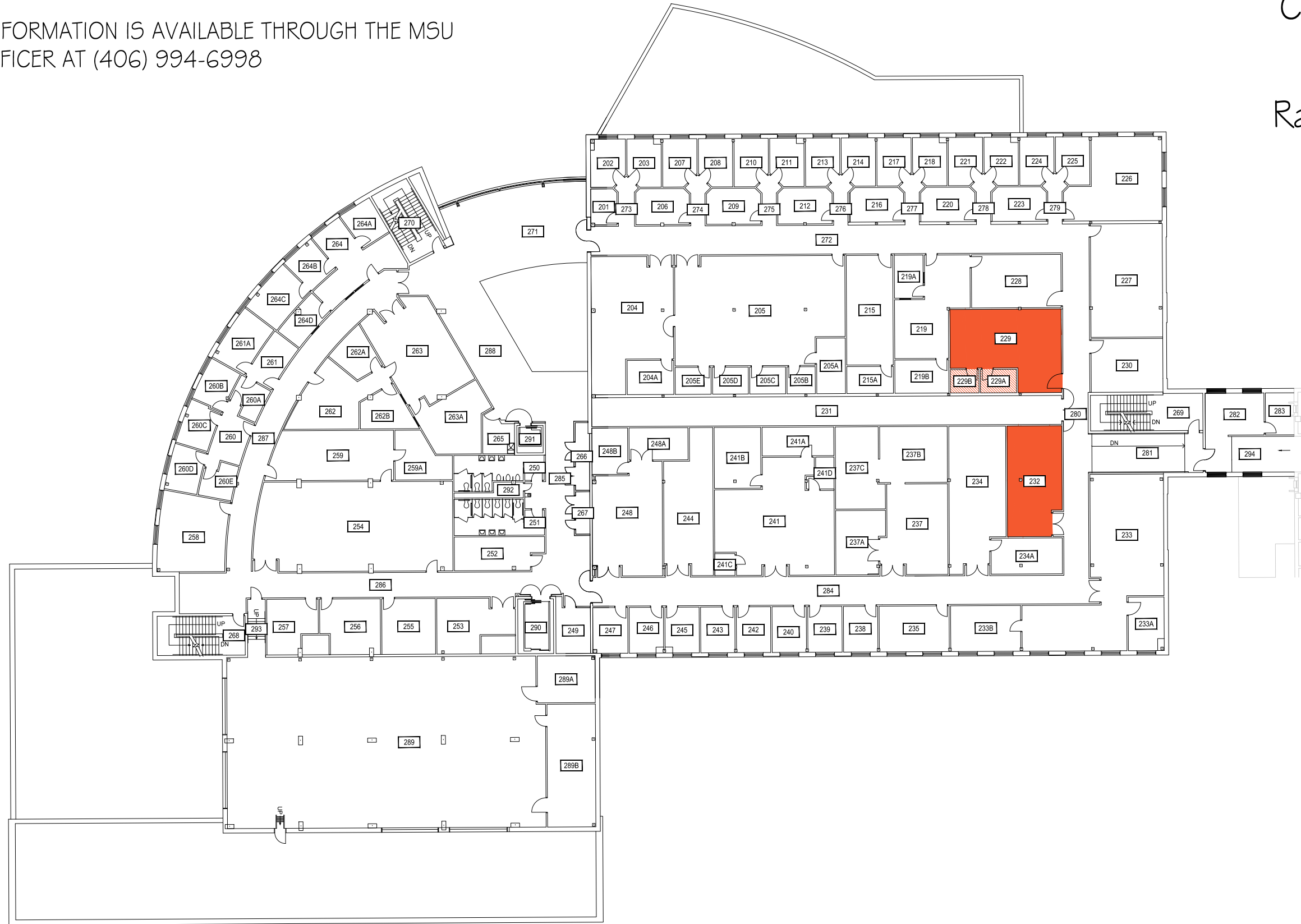


Mar 08, 2016 - 9:35am - BH\_139\_1Wall.dwg  
E:\Log - Feasibility\13-00-00\13-06-06 Biohazard Areas\130 Drawings\Barnard Hall



CLICK ON HAZARD LOCATION FOR CONTACT INFORMATION.

ADDITIONAL INFORMATION IS AVAILABLE THROUGH THE MSU BIOSAFETY OFFICER AT (406) 994-6998



Chemical



Radiation



1



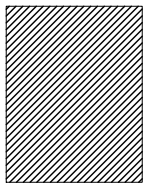
2



3



Indicates access only through hazard area.



# BARNARD HALL

LEVEL 2

CAMPUS PLANNING,  
DESIGN & CONSTRUCTION  
MONTANA STATE UNIVERSITY  
PHONE: 406.994.5413 FAX: 406.994.5665

SHEET TITLE

SHEET  
**L2**

DATE  
01-06-15

Mar 08, 2016 - 9:35am - BH\_139\_2Wall.dwg  
E:\Log - Feasibility\13-00-00\13-06-06 Biohazard Areas\130 Drawings\Barnard Hall



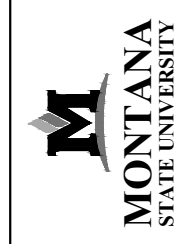
0 15' 30' 60'



SCALE: 1" = 30'

CLICK ON HAZARD LOCATION FOR CONTACT INFORMATION.

ADDITIONAL INFORMATION IS AVAILABLE THROUGH THE MSU BIOSAFETY OFFICER AT (406) 994-6998



# BARNARD HALL LEVEL 3

CAMPUS PLANNING,  
DESIGN & CONSTRUCTION  
MONTANA STATE UNIVERSITY  
PHONE: 406.994.5413 FAX: 406.994.5665

SHEET TITLE

SHEET  
**L3**

DATE  
01-06-15

Chemical



Radiation



1



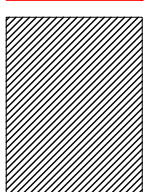
2



3



Indicates  
access  
only  
through  
hazard  
area.



0 15' 30' 60'



SCALE: 1" = 30'

Mar 08, 2016 - 9:55am - BH\_139\_3Wall.dwg  
E:\Log - Feasibility\13-00-00\13-06-06 Biohazard Areas\130 Drawings\Barnard Hall