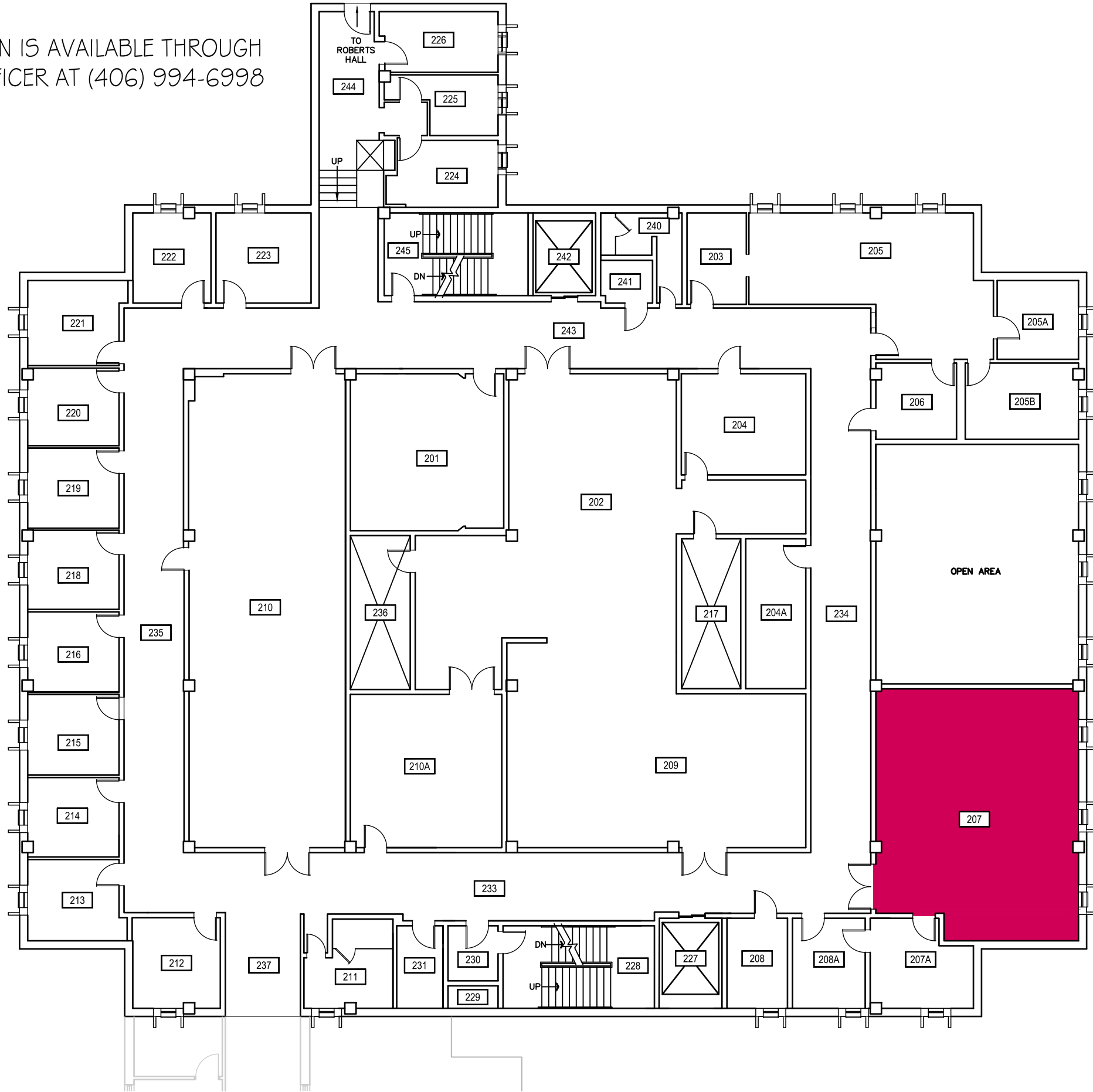


CLICK ON HAZARD LOCATION FOR CONTACT INFORMATION.

ADDITIONAL INFORMATION IS AVAILABLE THROUGH THE MSU BIOSAFETY OFFICER AT (406) 994-6998



Chemical



Radiation



1



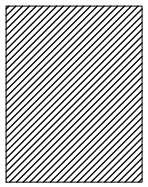
2



3



Indicates access only through hazard area.



**COBLEIGH HALL**

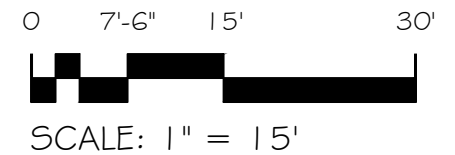
LEVEL 2

CAMPUS PLANNING,  
DESIGN & CONSTRUCTION  
MONTANA STATE UNIVERSITY  
PHONE: 406.994.5413 FAX: 406.994.5665

SHEET TITLE

SHEET  
**L2**

DATE  
01-06-15



CLICK ON HAZARD LOCATION FOR CONTACT INFORMATION.

ADDITIONAL INFORMATION IS AVAILABLE THROUGH THE MSU BIOSAFETY OFFICER AT (406) 994-6998



Chemical



Radiation



1



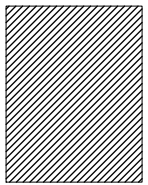
2



3



Indicates access only through hazard area.



# COBLEIGH HALL

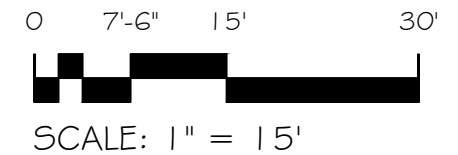
LEVEL 3

CAMPUS PLANNING,  
DESIGN & CONSTRUCTION  
MONTANA STATE UNIVERSITY  
PHONE: 406.994.5413 FAX: 406.994.5665

SHEET TITLE

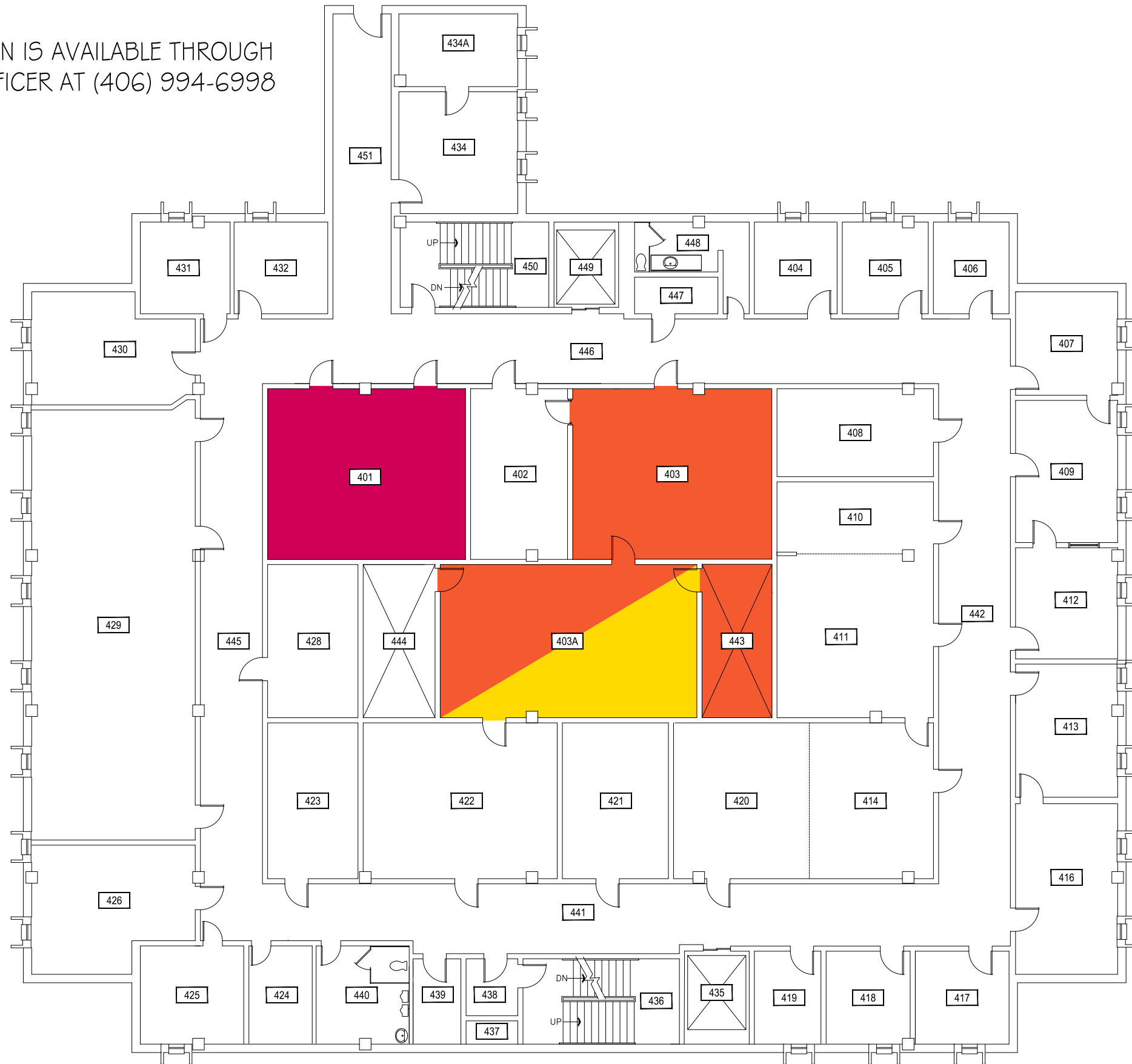
SHEET  
**L3**

DATE  
01-06-15



CLICK ON HAZARD LOCATION FOR CONTACT INFORMATION.

ADDITIONAL INFORMATION IS AVAILABLE THROUGH THE MSU BIOSAFETY OFFICER AT (406) 994-6998



Chemical



Radiation



1



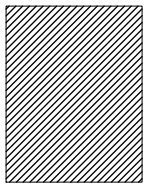
2



3



Indicates access only through hazard area.



# COBLEIGH HALL

LEVEL 4

CAMPUS PLANNING,  
DESIGN & CONSTRUCTION  
MONTANA STATE UNIVERSITY  
PHONE: 406.994.5413 FAX: 406.994.5665

SHEET TITLE

SHEET  
**L4**

DATE  
01-06-15

Apr 10, 2015 - 9:00am - BE\_119\_4Wall.dwg  
C:\Users\gary.gramer\appdata\local\temp\AcPublish\_8816

