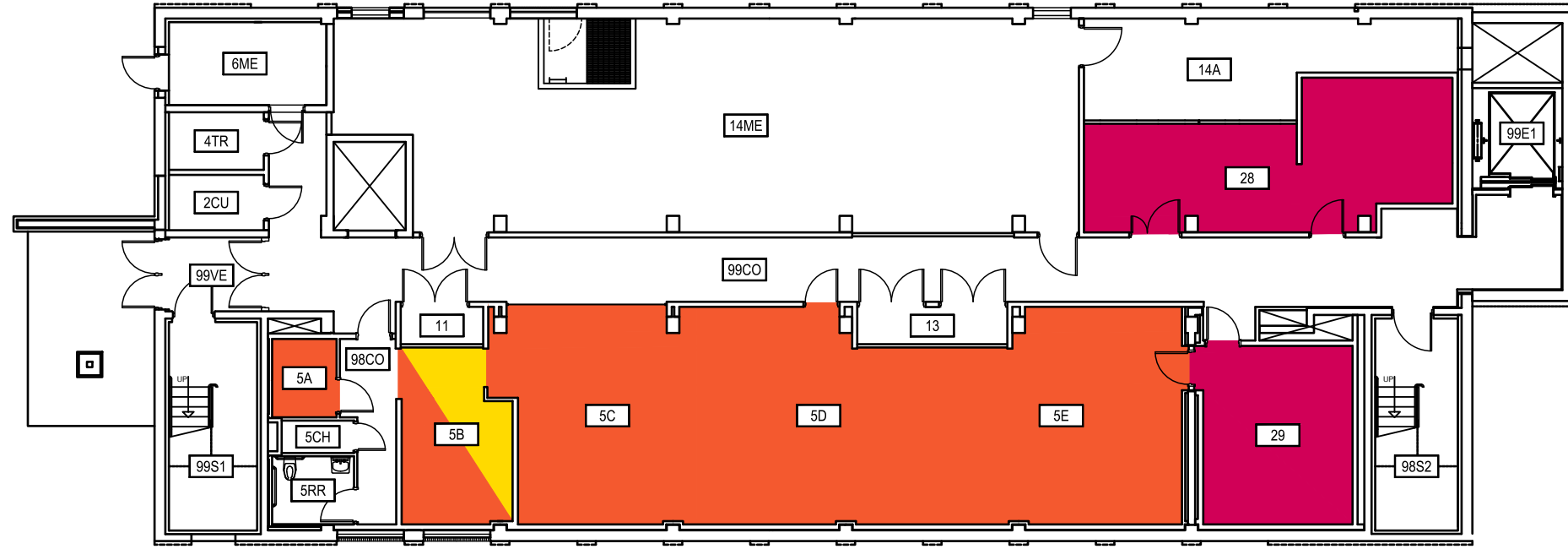


CLICK ON HAZARD LOCATION FOR CONTACT INFORMATION.

ADDITIONAL INFORMATION IS AVAILABLE THROUGH THE MSU BIOSAFETY OFFICER AT (406) 994-6998



Chemical



CHEMICAL

Radiation



RADIATION

1



BIOHAZARD

2



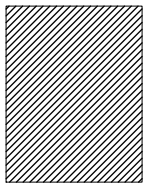
BIOHAZARD

3



BIOHAZARD

Indicates access only through hazard area.



COOLEY LABORATORY

LEVEL B

CAMPUS PLANNING,
DESIGN & CONSTRUCTION
MONTANA STATE UNIVERSITY
PHONE: 406.994.5413 FAX: 406.994.5665

SHEET TITLE

SHEET
LB

DATE
01-06-15



0 7'-6" 15' 30'



SCALE: 1" = 15'

Apr 15, 2015 - 10:33am - BH_118_BW.rvt.dwg
E:\Log - Feasibility\13-00-00\13-06-06 Biohazard Areas\130 Drawings\Cooley Laboratory\

CLICK ON HAZARD LOCATION FOR CONTACT INFORMATION.

ADDITIONAL INFORMATION IS AVAILABLE THROUGH THE MSU BIOSAFETY OFFICER AT (406) 994-6998



Chemical



CHEMICAL

Radiation



RADIATION

1



BIOHAZARD

2



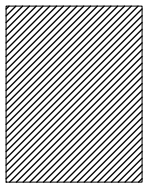
BIOHAZARD

3



BIOHAZARD

Indicates access only through hazard area.



COOLEY LABORATORY

LEVEL 1

CAMPUS PLANNING,
DESIGN & CONSTRUCTION
MONTANA STATE UNIVERSITY
PHONE: 406.994.5413 FAX: 406.994.5665

SHEET TITLE

SHEET

L1

DATE

01-06-15

Apr 15, 2015 - 10:33am - BH_L18_1Wall.dwg
E:\Log - Feasibility\13-06-00\13-06-06 Biohazard Areas\130 Drawings\Cooley Laboratory\



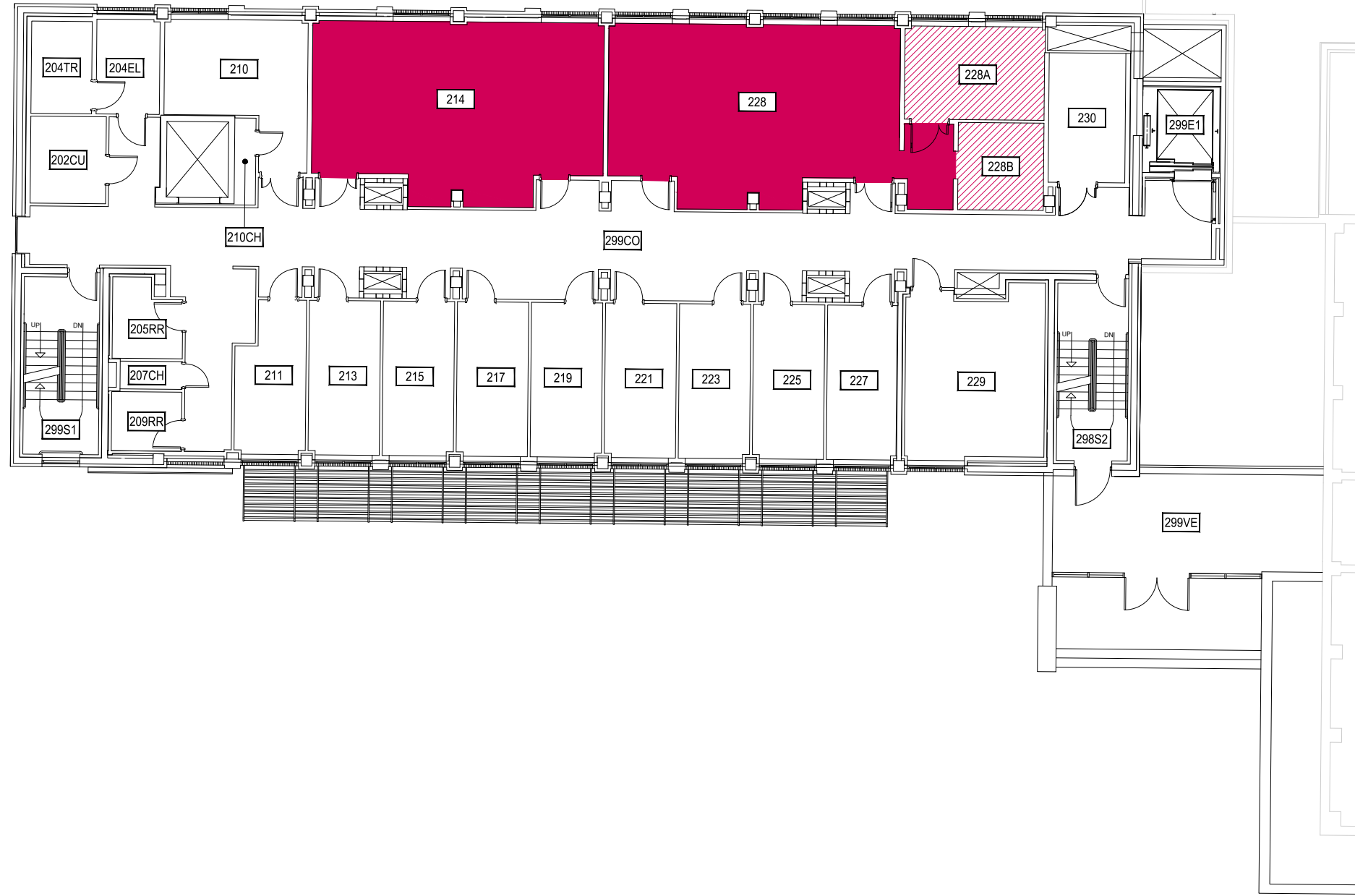
0 7'-6" 15' 30'



SCALE: 1" = 15'

CLICK ON HAZARD LOCATION FOR CONTACT INFORMATION.

ADDITIONAL INFORMATION IS AVAILABLE THROUGH THE MSU BIOSAFETY OFFICER AT (406) 994-6998



Chemical



CHEMICAL

Radiation



RADIATION

1



BIOHAZARD

2



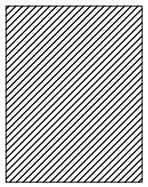
BIOHAZARD

3



BIOHAZARD

Indicates access only through hazard area.



COOLEY LABORATORY

LEVEL 2

CAMPUS PLANNING,
DESIGN & CONSTRUCTION
MONTANA STATE UNIVERSITY
PHONE: 406.994.5413 FAX: 406.994.5665

SHEET TITLE

SHEET
L2

DATE
01-06-15

Apr 15, 2015 - 10:33am - BH_118_2Wall.dwg
E:\Log - Feasibility\13-06-00\13-06-06 Biohazard Areas\130 Drawings\Cooley Laboratory\



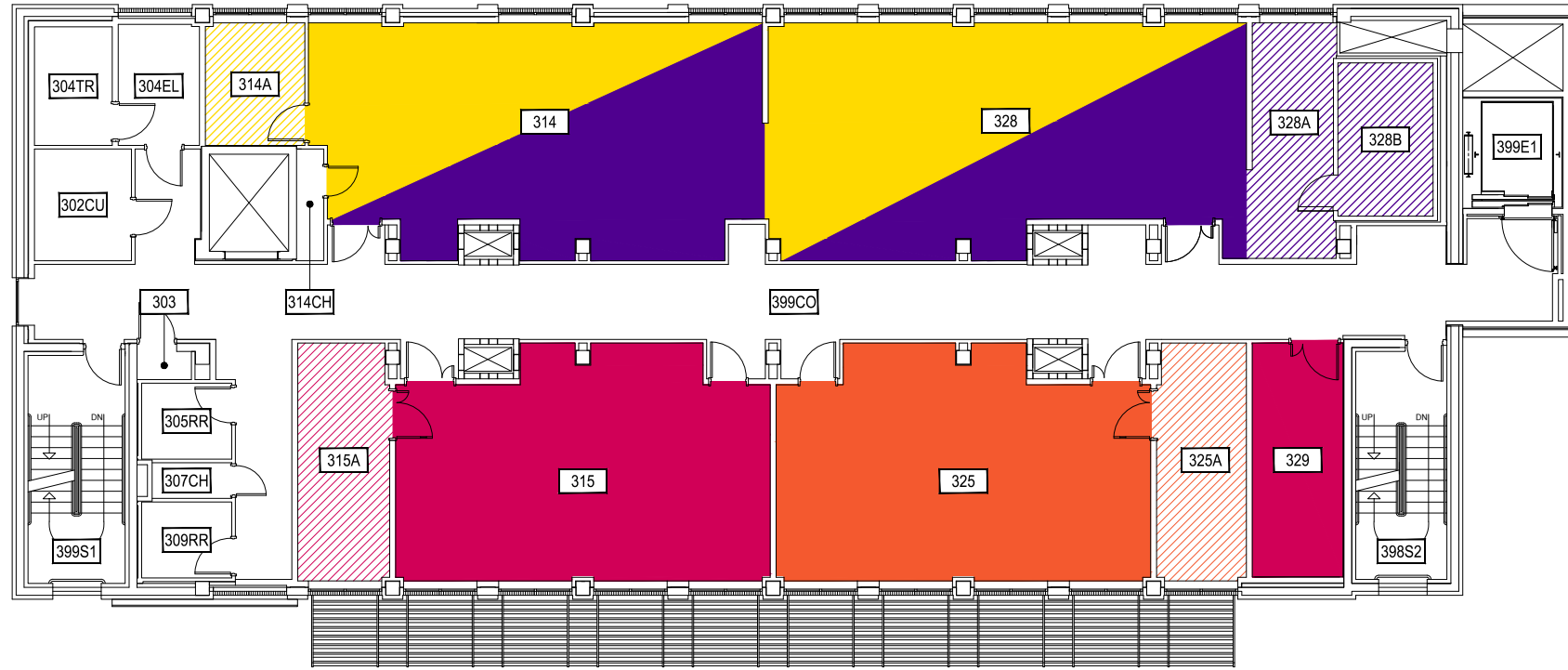
0 7'-6" 15' 30'



SCALE: 1" = 15'

CLICK ON HAZARD LOCATION FOR CONTACT INFORMATION.

ADDITIONAL INFORMATION IS AVAILABLE THROUGH THE MSU BIOSAFETY OFFICER AT (406) 994-6998



Chemical



CHEMICAL

Radiation



RADIATION

1



BIOHAZARD

2



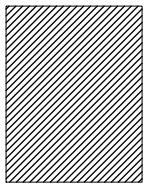
BIOHAZARD

3



BIOHAZARD

Indicates access only through hazard area.



COOLEY LABORATORY

LEVEL 3

CAMPUS PLANNING,
DESIGN & CONSTRUCTION
MONTANA STATE UNIVERSITY
BOZEMAN, MONTANA
PHONE: 406.994.5413 FAX: 406.994.5665

SHEET TITLE

SHEET
L3

DATE
01-06-15

Apr 15, 2015 - 10:33am - BH_L18_3Wall.dwg
E:\Log - Feasibility\13-06-00\13-06-06 Biohazard Areas\130 Drawings\Cooley Laboratory\



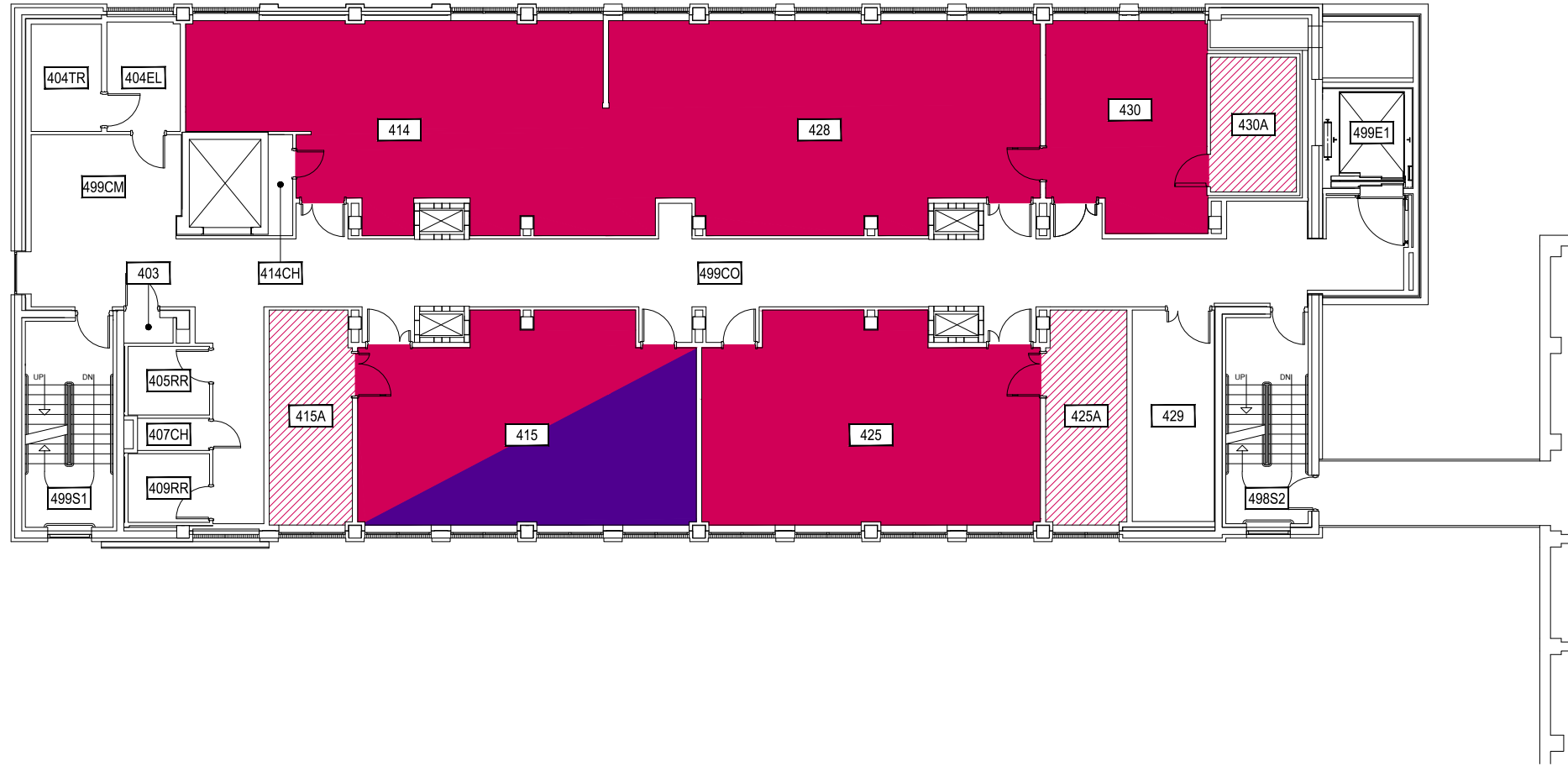
0 7'-6" 15' 30'



SCALE: 1" = 15'

CLICK ON HAZARD LOCATION FOR CONTACT INFORMATION.

ADDITIONAL INFORMATION IS AVAILABLE THROUGH THE MSU BIOSAFETY OFFICER AT (406) 994-6998



Chemical



CHEMICAL

Radiation



RADIATION

1



BIOHAZARD

2



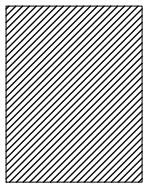
BIOHAZARD

3



BIOHAZARD

Indicates access only through hazard area.



COOLEY LABORATORY

LEVEL 4

CAMPUS PLANNING,
DESIGN & CONSTRUCTION
MONTANA STATE UNIVERSITY
BOZEMAN, MONTANA
PHONE: 406.994.5413 FAX: 406.994.5665

SHEET TITLE

SHEET
L4

DATE
01-06-15

Apr 15, 2015 - 10:33am - BH_118_4Wall.dwg
E:\Log - Feasibility\13-06-00\13-06-06 Biohazard Areas\130 Drawings\Cooley Laboratory\

