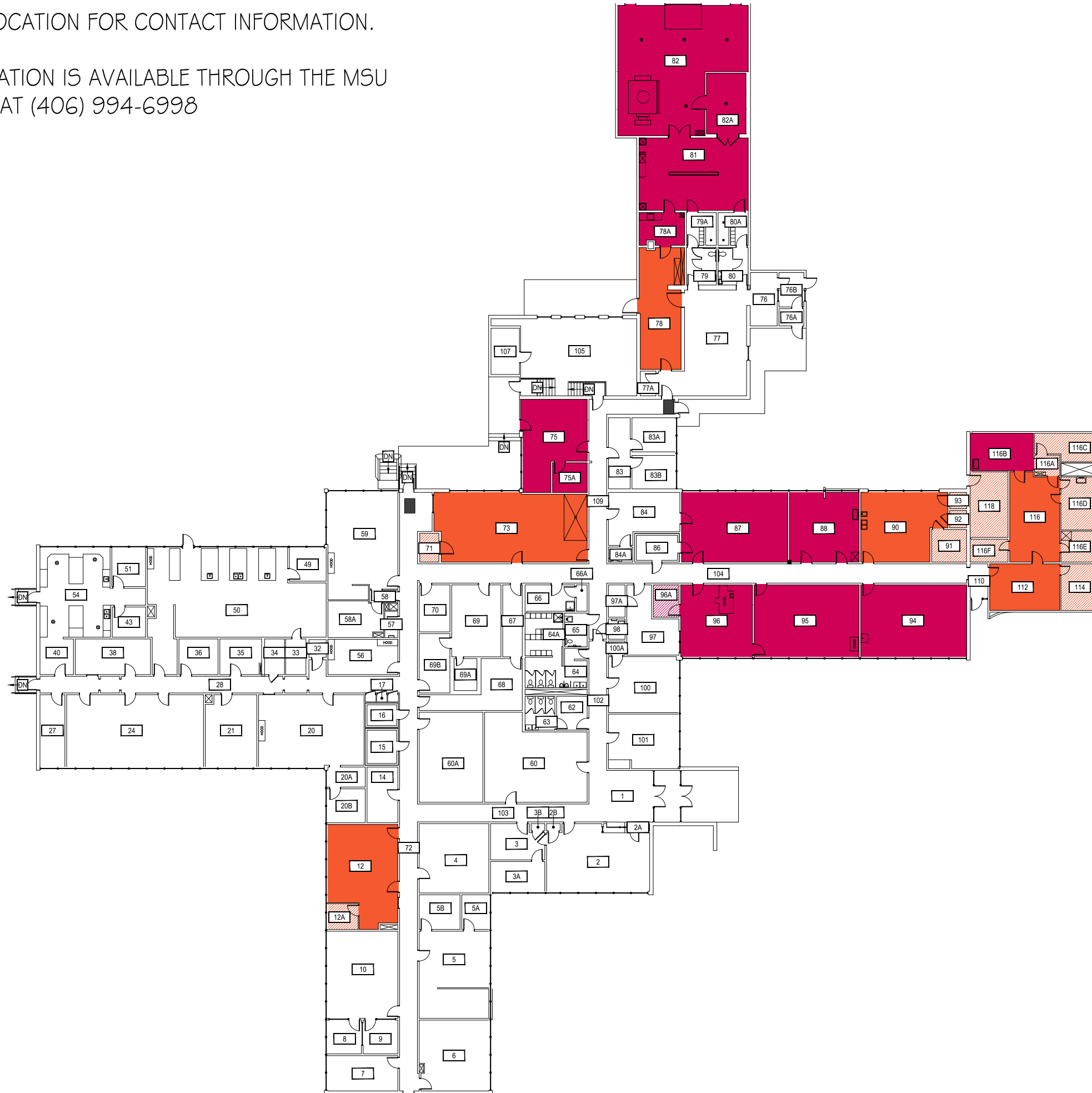


CLICK ON HAZARD LOCATION FOR CONTACT INFORMATION.

ADDITIONAL INFORMATION IS AVAILABLE THROUGH THE MSU BIOSAFETY OFFICER AT (406) 994-6998



Chemical



Radiation



1



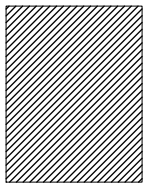
2



3



Indicates access only through hazard area.



0 15' 30' 60'



SCALE: 1" = 30'



MARSH LABORATORY

LEVEL 1

CAMPUS PLANNING,
DESIGN & CONSTRUCTION
MONTANA STATE UNIVERSITY
1500 W. UNIVERSITY AVENUE
BOZEMAN, MONTANA 59717
PHONE: 406.994.5413 FAX: 406.994.5665

SHEET TITLE

SHEET

L1

DATE

01-06-15

Apr 21, 2015 - 7:43am - BE_116_1Wall.dwg
E:\Log - Feasibility\13-00-00\13-06-06 Biohazard Areas\130 Drawings\Marsh Laboratory\