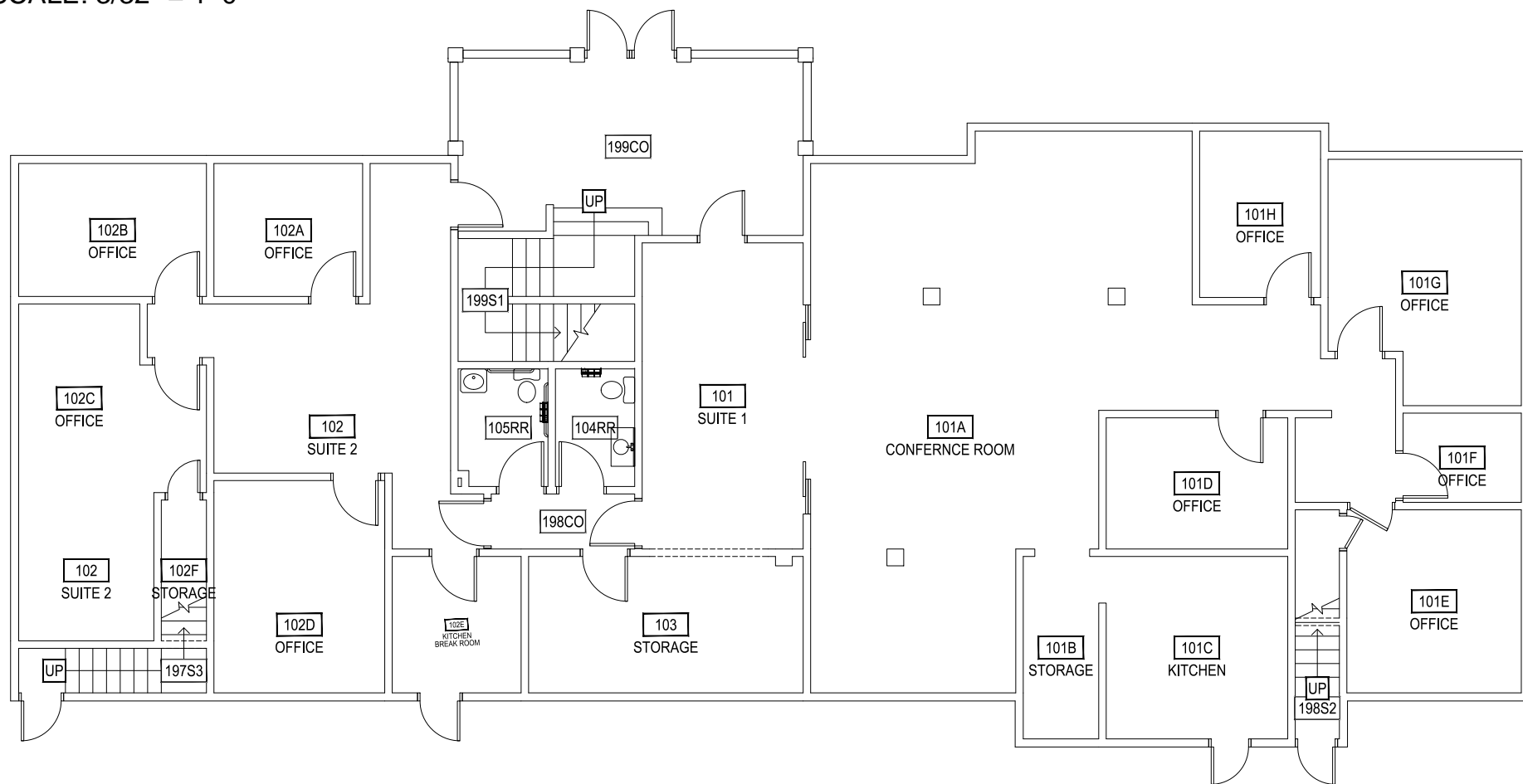


0 5'-4" 10'-8" 21'-4"



SCALE: 3/32" = 1'-0"



1

MSU ALUMNI FOUNDATION - 1822 WEST LINCOLN

FIRST LEVEL



Jan 27, 2015 - 3:36pm - 935_A1.dwg
H:\MSU Alumni Foundation - 1822 West Lincoln\Building Plan - Book Copy1

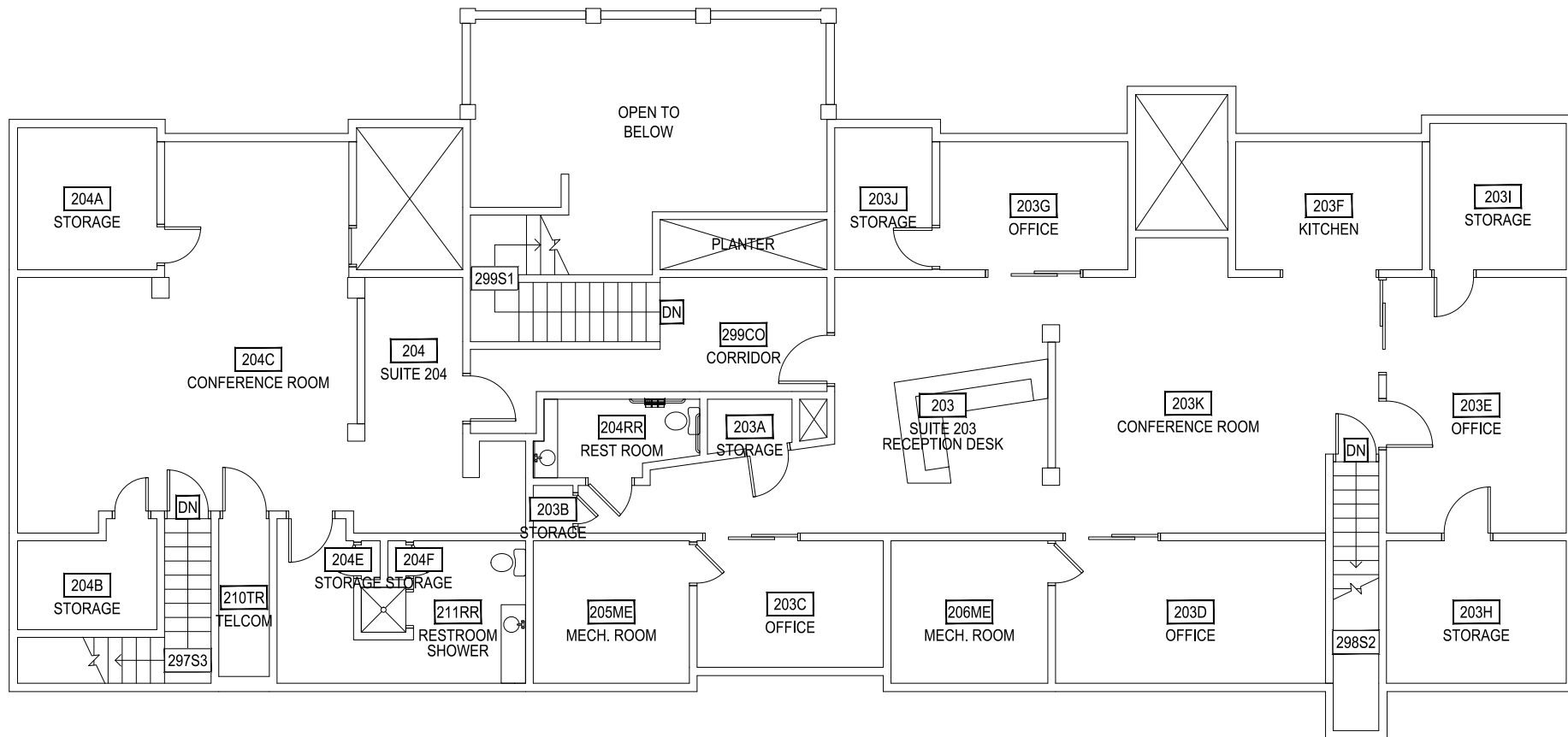
M MONTANA STATE UNIVERSITY
 CAMPUS PLANNING, DESIGN & CONSTRUCTION
 BOZEMAN, MONTANA
 PHONE: 406.994.5413 FAX: 406.994.5665

INDEX #	138
BUILDING #	935

0 5'-4" 10'-8" 21'-4"



SCALE: 3/32" = 1'-0"



1

MSU ALUMNI FOUNDATION - 1822 WEST LINCOLN

SECOND LEVEL



Jan 27, 2015 - 3:36pm - 935_A2.dwg
H:\MSU Alumni Foundation - 1822 West Lincoln\Building Plan - Book Copy1

M MONTANA STATE UNIVERSITY
 CAMPUS PLANNING,
 DESIGN & CONSTRUCTION
 BOZEMAN, MONTANA
 PHONE: 406.994.5413 FAX: 406.994.5665

INDEX #	138
BUILDING #	935