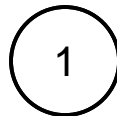
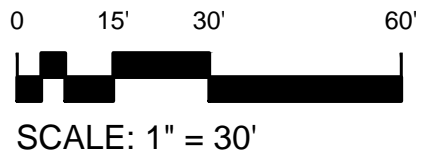
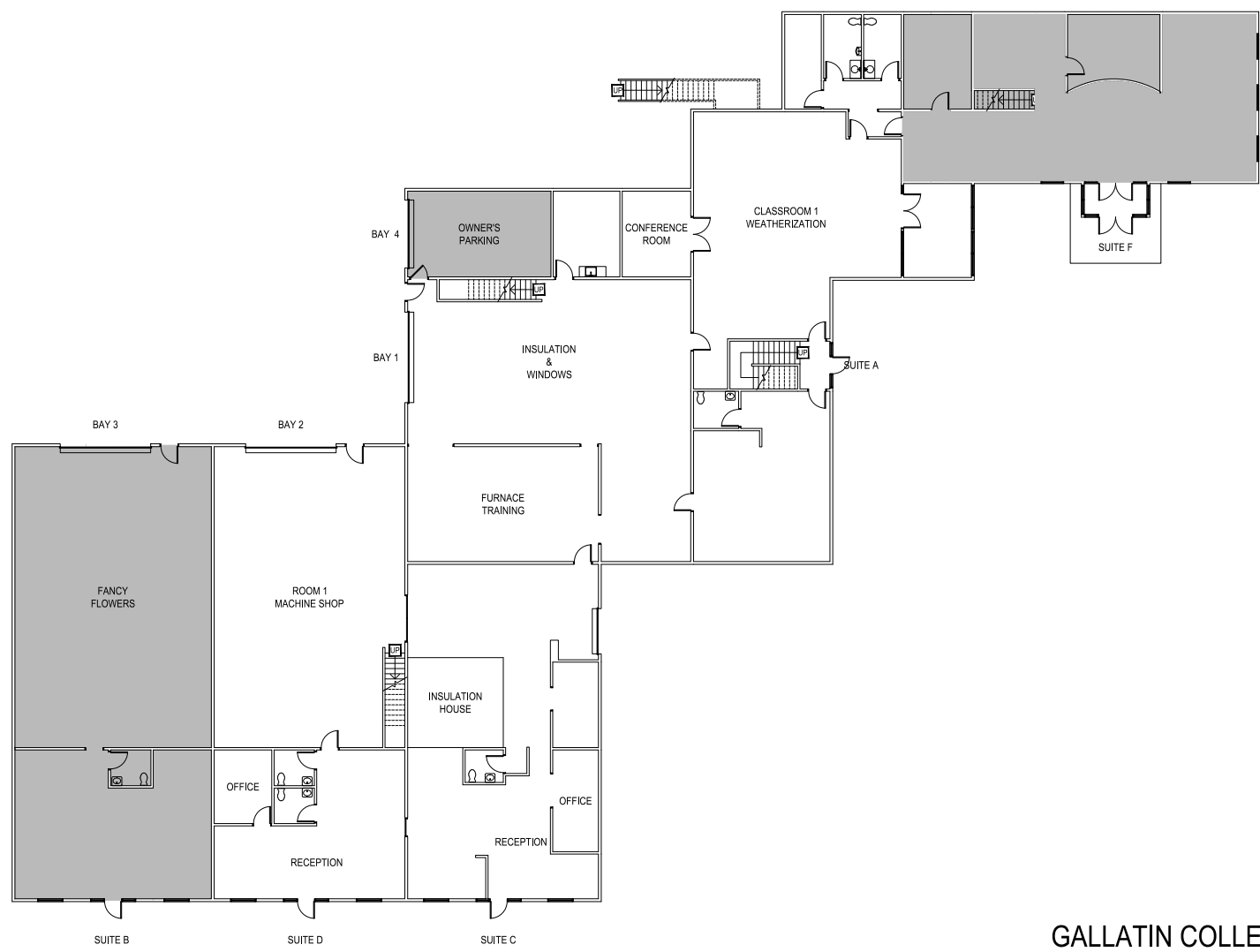
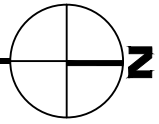


Jan 15, 2015 - 7:24am - 910_A1.dwg
C:\Users\gary.gramer\appdata\local\temp\AcPublish_2680\



FIRST LEVEL
FRONTAGE ROAD COMMERCIAL PROPERTIES

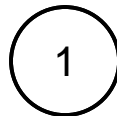
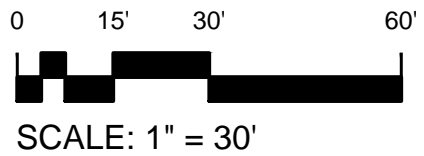
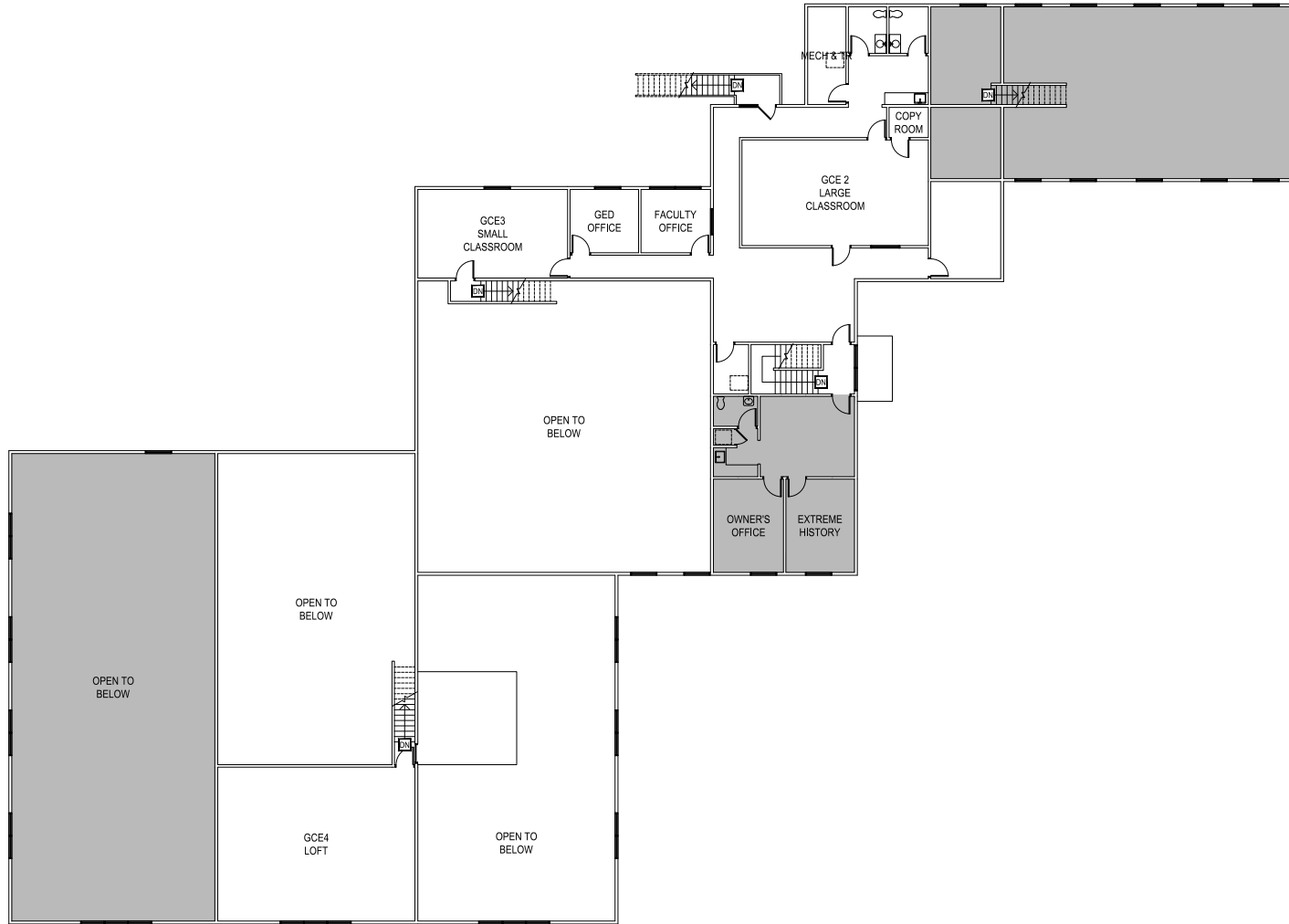


GALLATIN COLLEGE EAST CAMPUS
705 OSTERMAN DRIVE

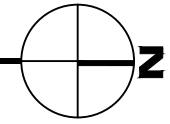
M MONTANA STATE UNIVERSITY
CAMPUS PLANNING,
DESIGN & CONSTRUCTION
BOZEMAN, MONTANA
PHONE: 406.994.5413 FAX: 406.994.5665

| | |
|------------|------------|
| INDEX # | 135 |
| BUILDING # | 910 |

Jan 15, 2015 - 7:24am - 910_A2.dwg
H:\Frontage Road Commercial Properties\Building Plan - Book Copy\



SECOND LEVEL
FRONTAGE ROAD COMMERCIAL PROPERTIES



GALLATIN COLLEGE EAST CAMPUS
705 OSTERMAN DRIVE

M MONTANA
STATE UNIVERSITY
CAMPUS PLANNING,
DESIGN & CONSTRUCTION
BOZEMAN, MONTANA
PHONE: 406.994.5413 FAX: 406.994.5665

| | |
|------------|------------|
| INDEX # | 135 |
| BUILDING # | 910 |