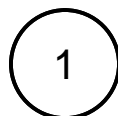
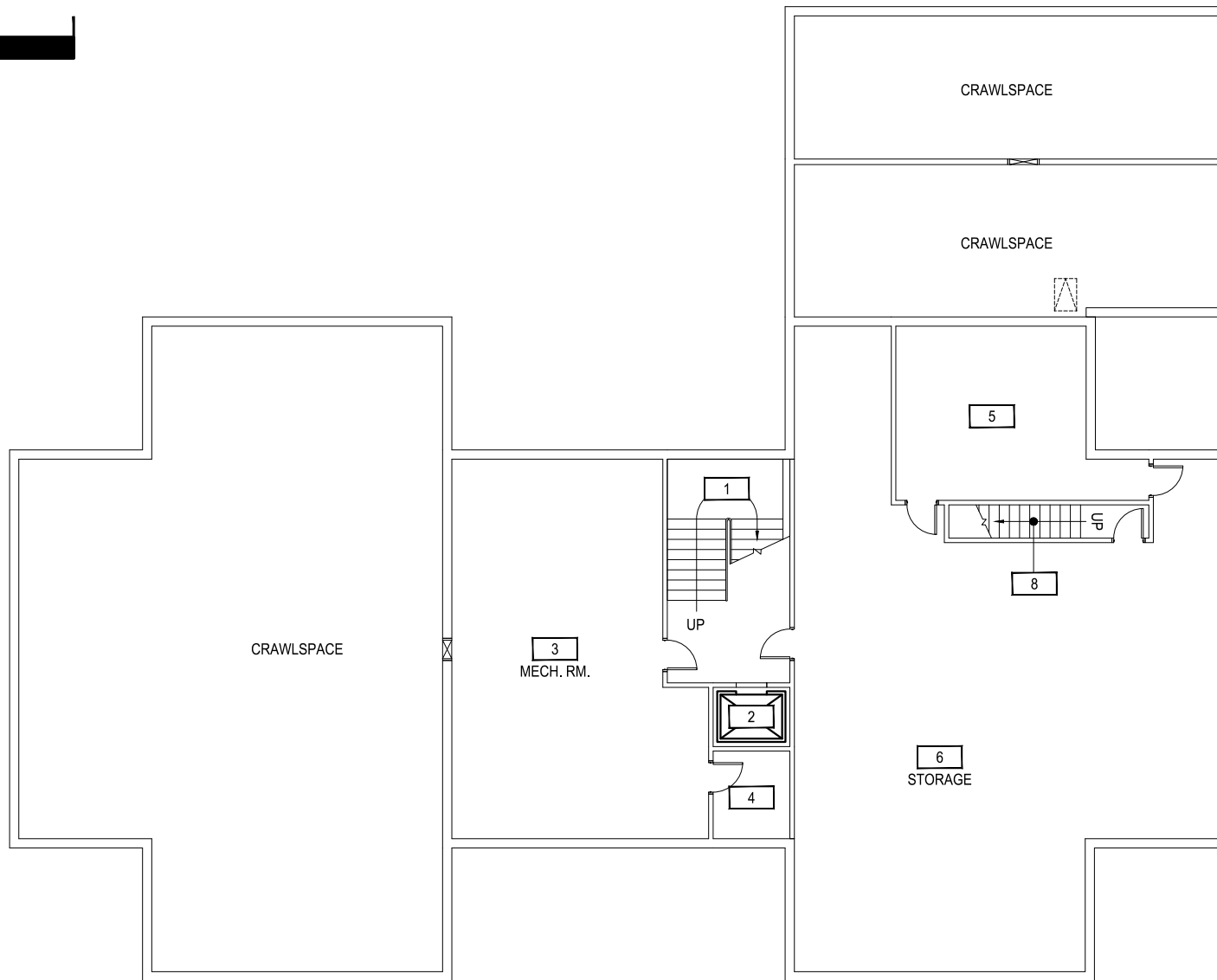


0 7'-6" 15' 30'

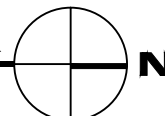


SCALE: 1" = 15'



MSU ALUMNI FOUNDATION CENTER

BASEMENT LEVEL



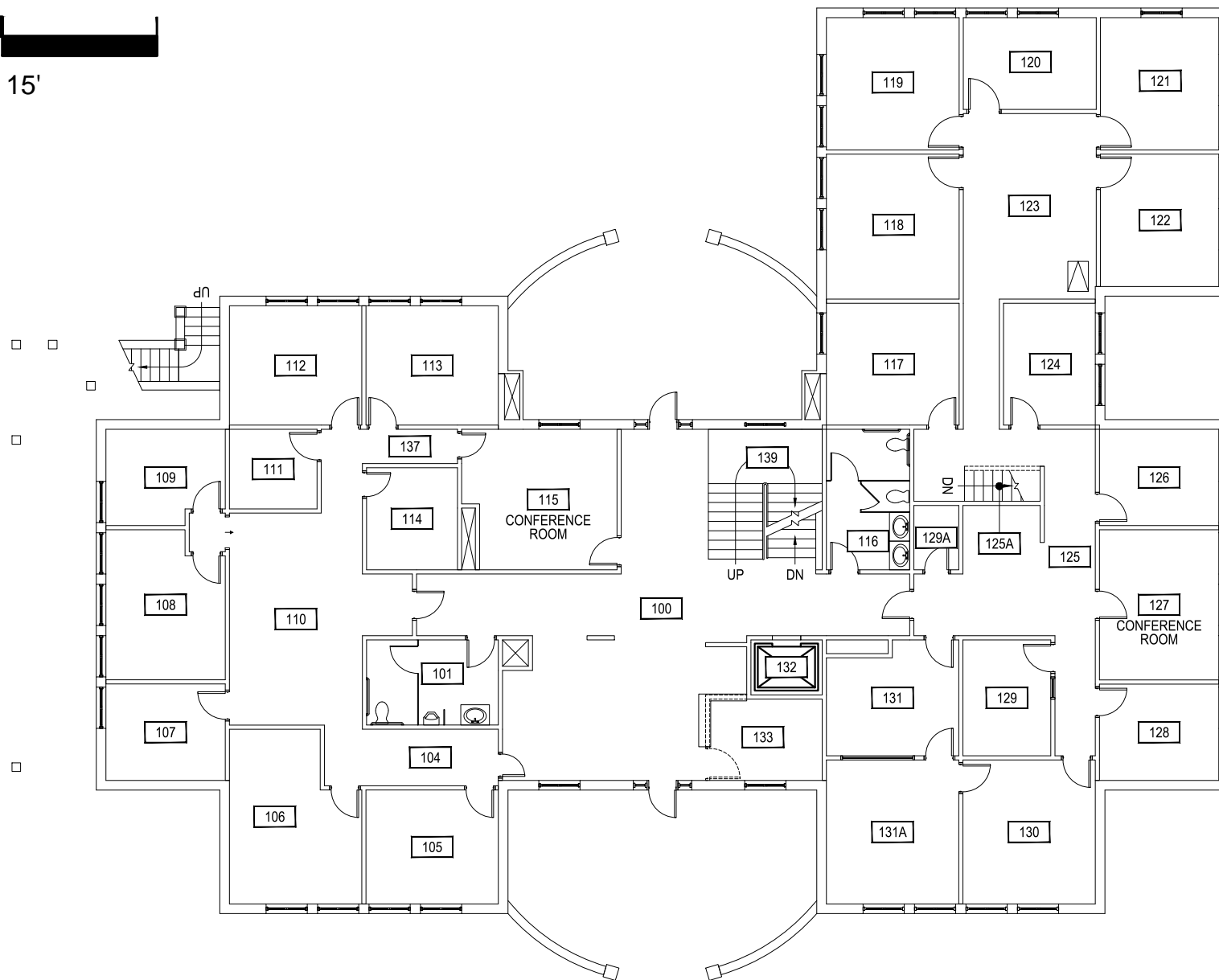
M MONTANA STATE UNIVERSITY
 CAMPUS PLANNING,
 DESIGN & CONSTRUCTION
 BOZEMAN, MONTANA
 PHONE: 406.994.5413 FAX: 406.994.5665

| | |
|------------|------------|
| INDEX # | 79 |
| BUILDING # | 900 |

0 7'-6" 15' 30'



SCALE: 1" = 15'

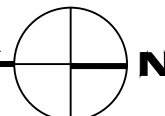


Jan 27, 2015 - 3:31pm - 900_A1.dwg
C:\Users\gary.grame\appdata\local\temp\AcPublish_6940\



MSU ALUMNI FOUNDATION CENTER

FIRST LEVEL



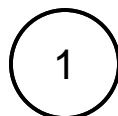
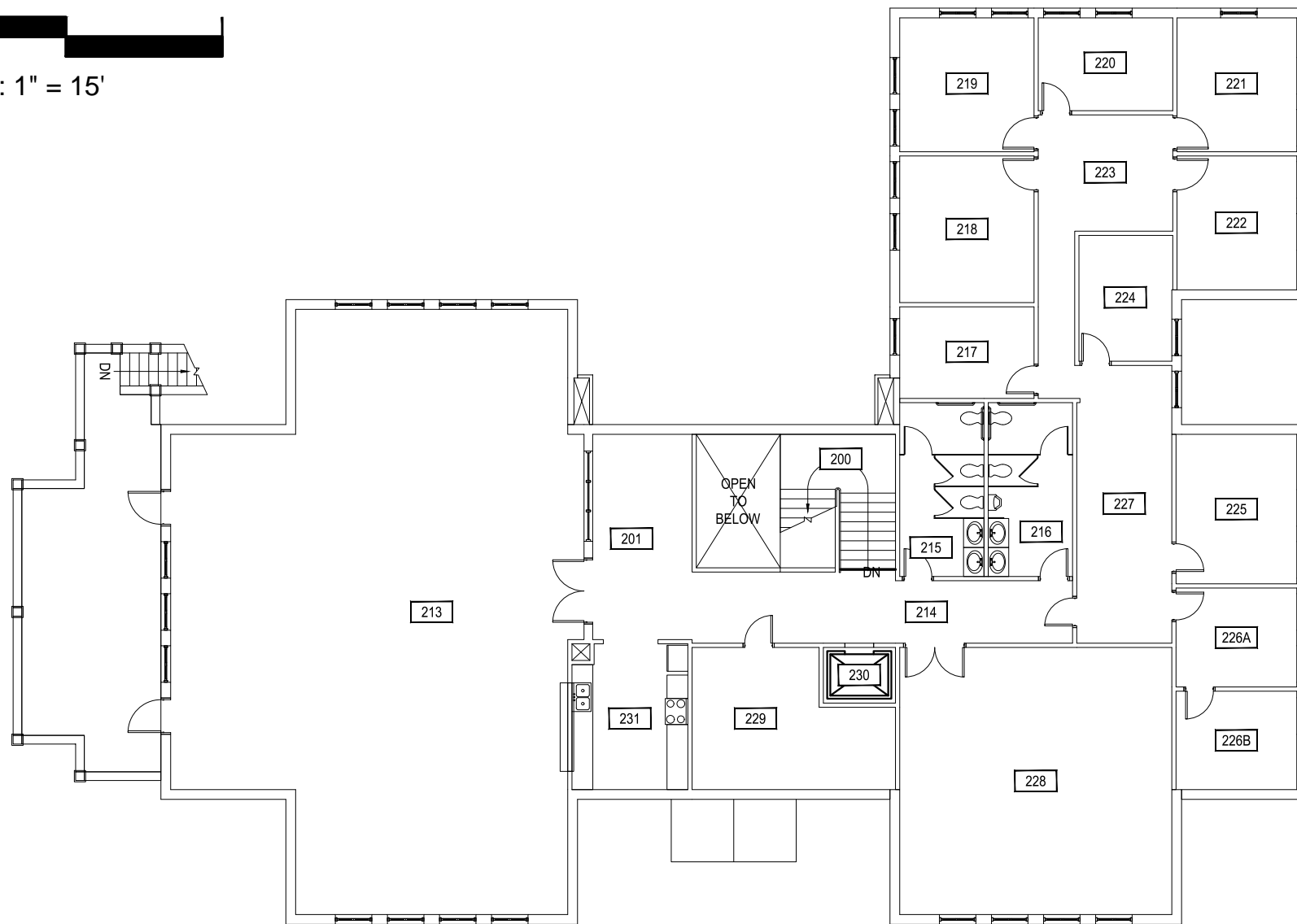
M MONTANA STATE UNIVERSITY
 CAMPUS PLANNING,
 DESIGN & CONSTRUCTION
 BOZEMAN, MONTANA
 PHONE: 406.994.5413 FAX: 406.994.5665

| | |
|------------|------------|
| INDEX # | 79 |
| BUILDING # | 900 |

0 7'-6" 15' 30'

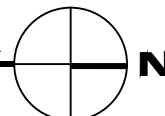


SCALE: 1" = 15'



MSU ALUMNI FOUNDATION CENTER

SECOND LEVEL



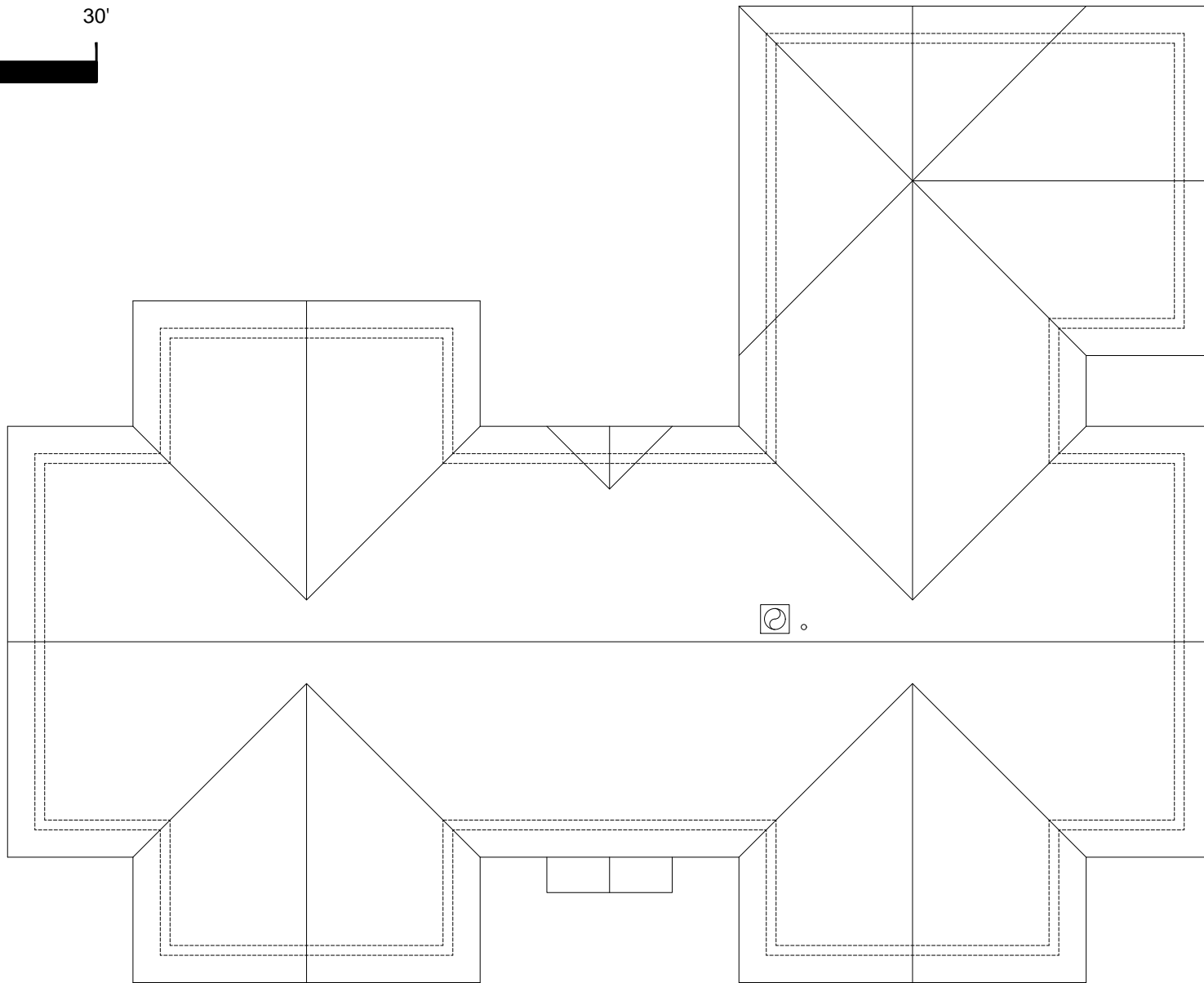
M MONTANA STATE UNIVERSITY
 CAMPUS PLANNING,
 DESIGN & CONSTRUCTION
 BOZEMAN, MONTANA
 PHONE: 406.994.5413 FAX: 406.994.5665

| | |
|------------|------------|
| INDEX # | 79 |
| BUILDING # | 900 |

0 7'-6" 15' 30'

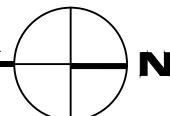


SCALE: 1" = 15'



MSU ALUMNI FOUNDATION CENTER

ROOF LEVEL



M MONTANA
STATE UNIVERSITY
CAMPUS PLANNING,
DESIGN & CONSTRUCTION
BOZEMAN, MONTANA
PHONE: 406.994.5413 FAX: 406.994.5665

| | |
|------------|------------|
| INDEX # | 79 |
| BUILDING # | 900 |