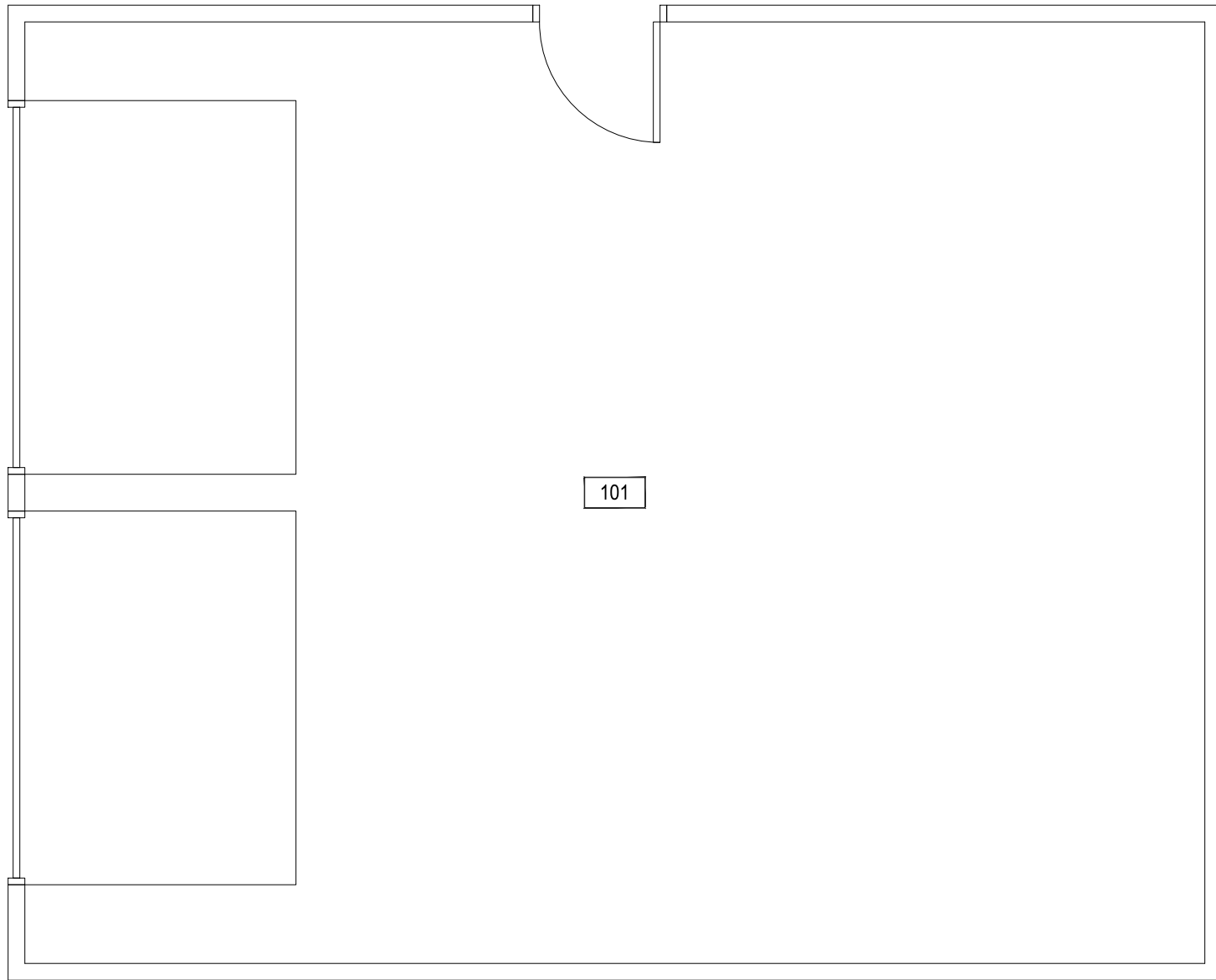


Aug 04, 2014 - 11:45am - 675-A1.dwg
H:\Oriven Farm\Bldg Plan Book\



SCALE: 1/4" = 1'



FIRST LEVEL

GIRVEN RESIDENCE 2 CAR GARAGE



M MONTANA
STATE UNIVERSITY
FACILITIES PLANNING,
DESIGN & CONSTRUCTION
BOZEMAN, MONTANA
PHONE: 406.994.4131 FAX: 406.994.6572

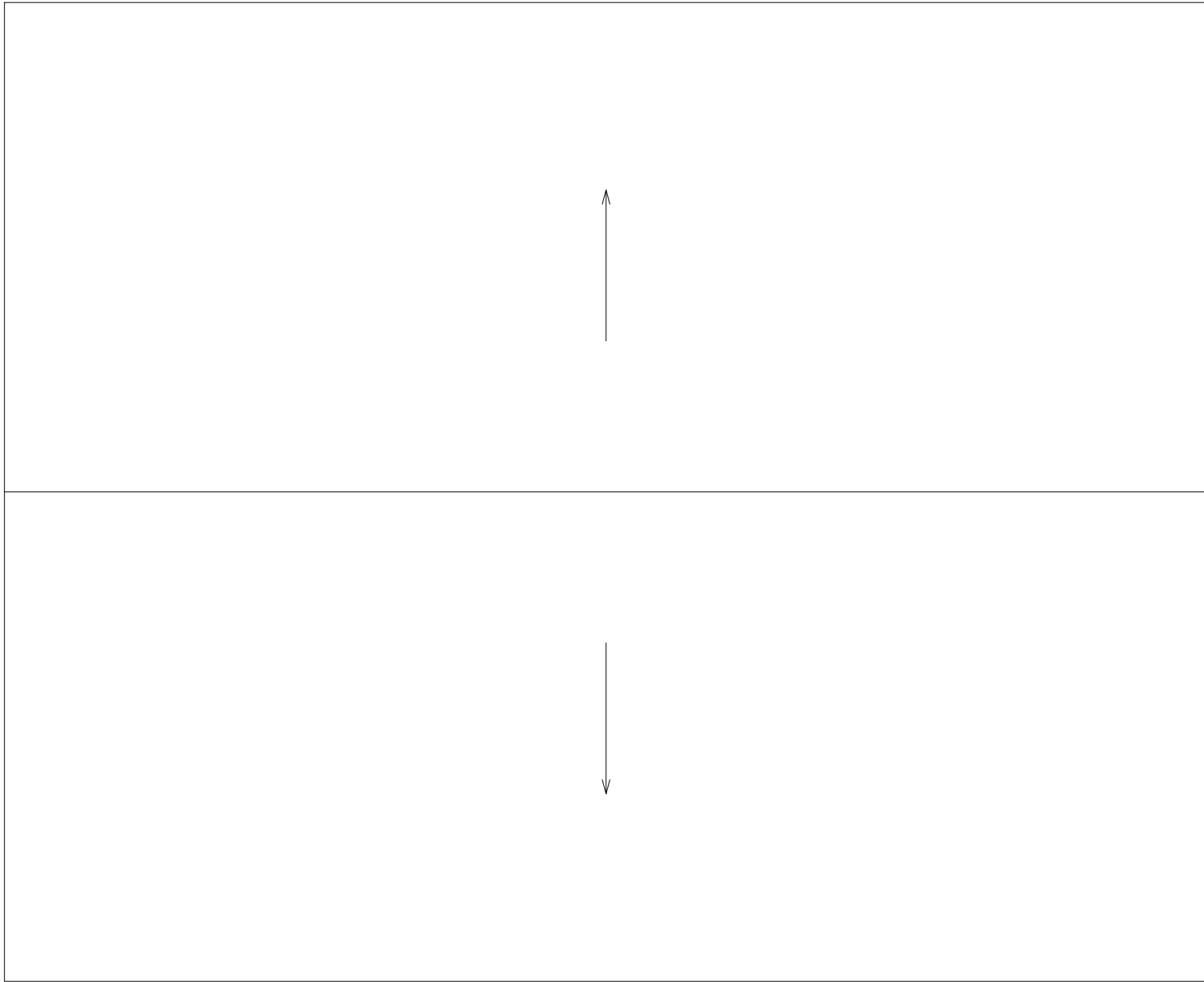
INDEX #

115

BUILDING #

675

Aug 04, 2014 - 11:45am - 675-AR.dwg
H:\Oriven Farm\Bldg Plan Book\



SCALE: 1/4" = 1'



ROOF LEVEL
GIRVEN RESIDENCE 2 CAR GARAGE



M MONTANA
STATE UNIVERSITY
FACILITIES PLANNING,
DESIGN & CONSTRUCTION
BOZEMAN, MONTANA
PHONE: 406.994.4131 FAX: 406.994.6572

INDEX #
115
BUILDING #
675