

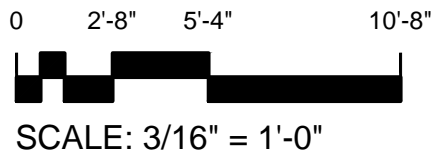
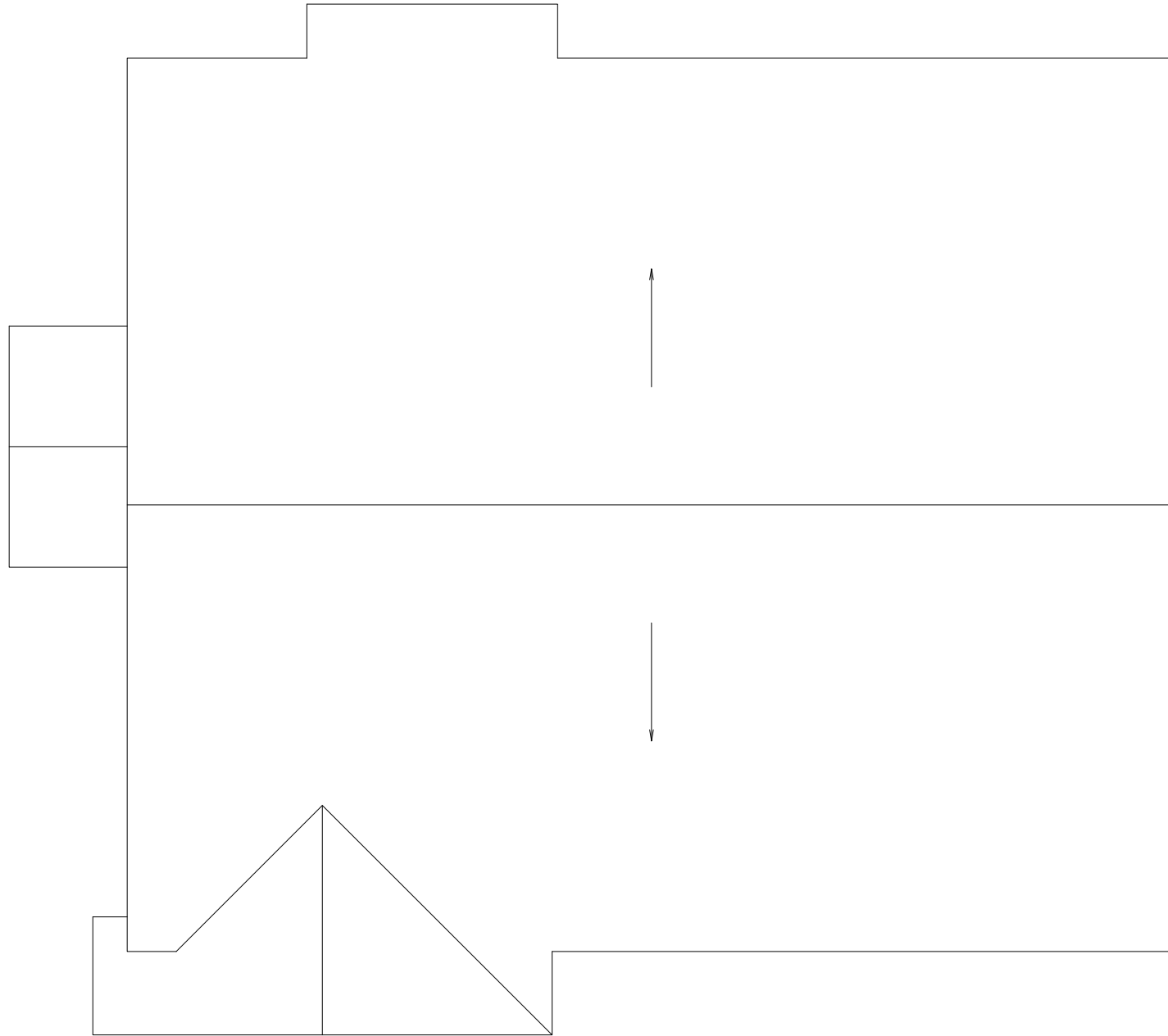
**1** **FIRST LEVEL**  
GLACIER COURT - 31



**M** MONTANA STATE UNIVERSITY  
FACILITIES PLANNING,  
DESIGN & CONSTRUCTION  
BOZEMAN, MONTANA  
PHONE: 406.994.4131 FAX: 406.994.6572

INDEX # **39**  
BUILDING # **5630031**

Nov 14, 2013 - 2:32pm - 5630031\_AR.dwg  
H:\Family Housing\Glacier Court\Building Plan - Book Copy\



1 ROOF LEVEL  
GLACIER COURT - 31



**M** MONTANA  
STATE UNIVERSITY  
FACILITIES PLANNING,  
DESIGN & CONSTRUCTION  
BOZEMAN, MONTANA  
PHONE: 406.994.4131 FAX: 406.994.6572

INDEX #  
**39**  
BUILDING #  
**5630031**