

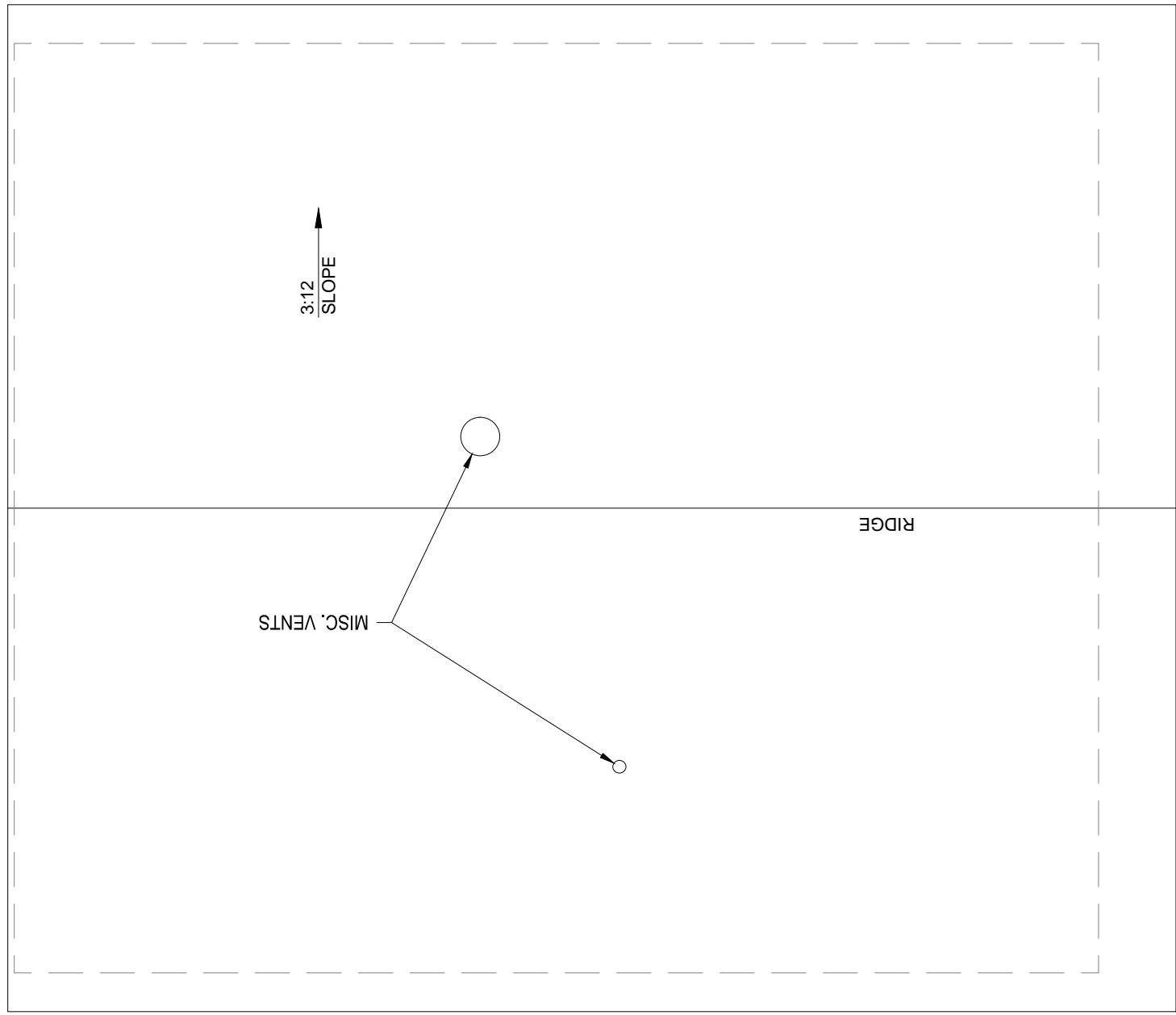
**1** **FIRST LEVEL**  
GLACIER COURT - 20



**M** MONTANA  
STATE UNIVERSITY  
FACILITIES PLANNING,  
DESIGN & CONSTRUCTION  
BOZEMAN, MONTANA  
PHONE: 406.994.4131 FAX: 406.994.6572

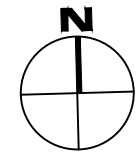
INDEX #  
**39**  
BUILDING #  
**5630020**

Nov 14, 2013 - 2:21pm - 5630020\_AR.dwg  
H:\Family Housing\Glacier Court\Building Plan - Book Copy\



SCALE: 1/4" = 1'-0"

1 ROOF LEVEL  
GLACIER COURT - 20



**M** MONTANA  
STATE UNIVERSITY  
FACILITIES PLANNING,  
DESIGN & CONSTRUCTION  
BOZEMAN, MONTANA  
PHONE: 406.994.4131 FAX: 406.994.6572

INDEX #  
**39**  
BUILDING #  
**5630020**