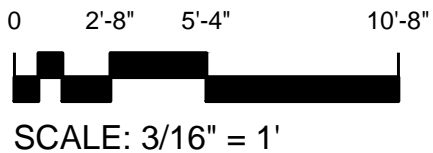
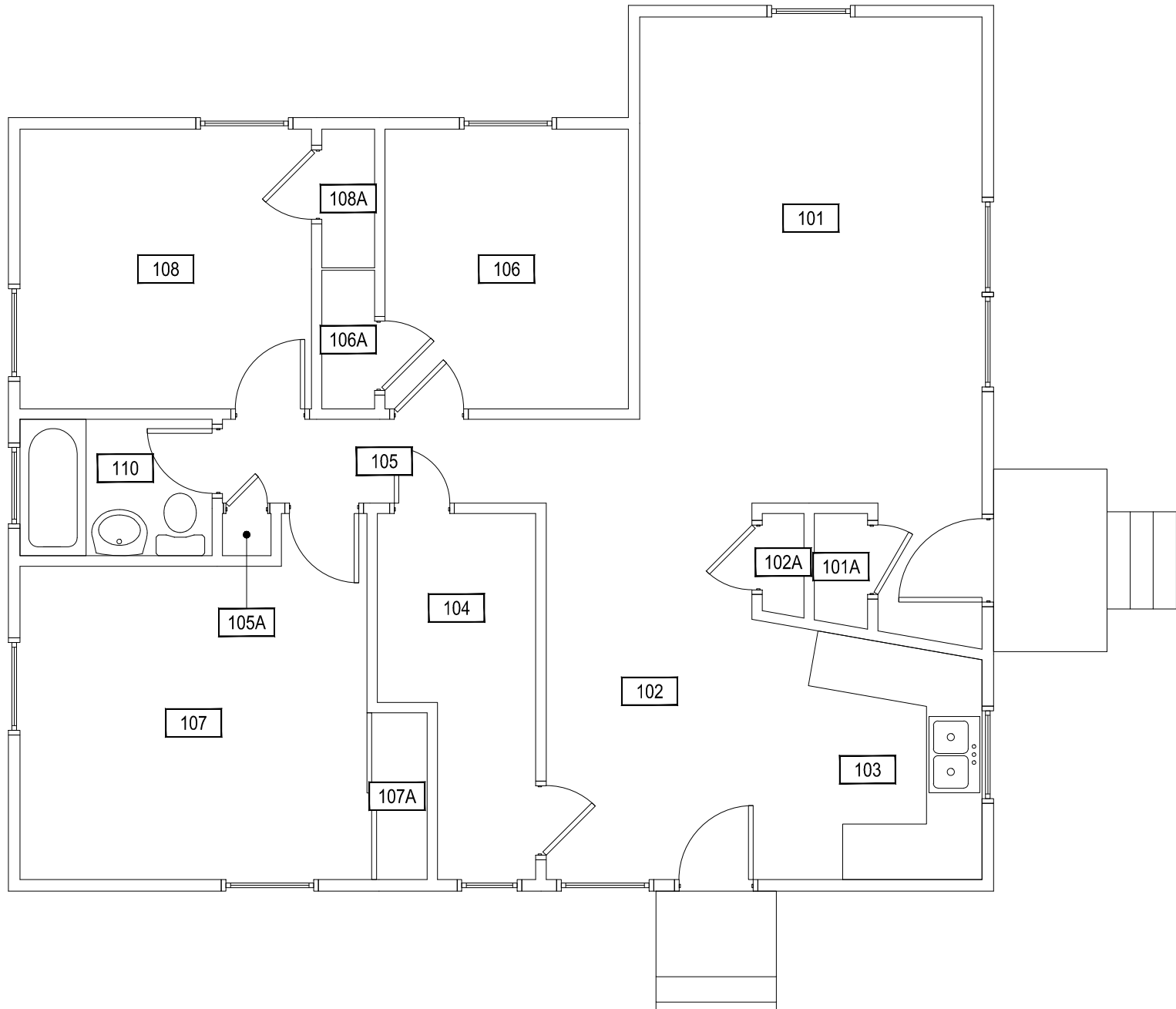
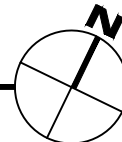


Oct 15, 2012 - 10:40am - 537_A1.dwg
H:\Faculty Housing\Faculty Court\25\Building Plan - Book Copy\



1 FIRST LEVEL
FACULTY COURT - 25



M MONTANA
STATE UNIVERSITY
FACILITIES PLANNING,
DESIGN & CONSTRUCTION
BOZEMAN, MONTANA
PHONE: 406.994.4131 FAX: 406.994.6572

INDEX #
56
BUILDING #
537