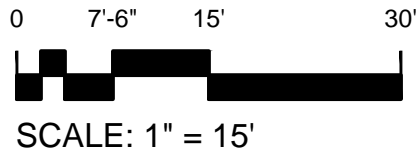
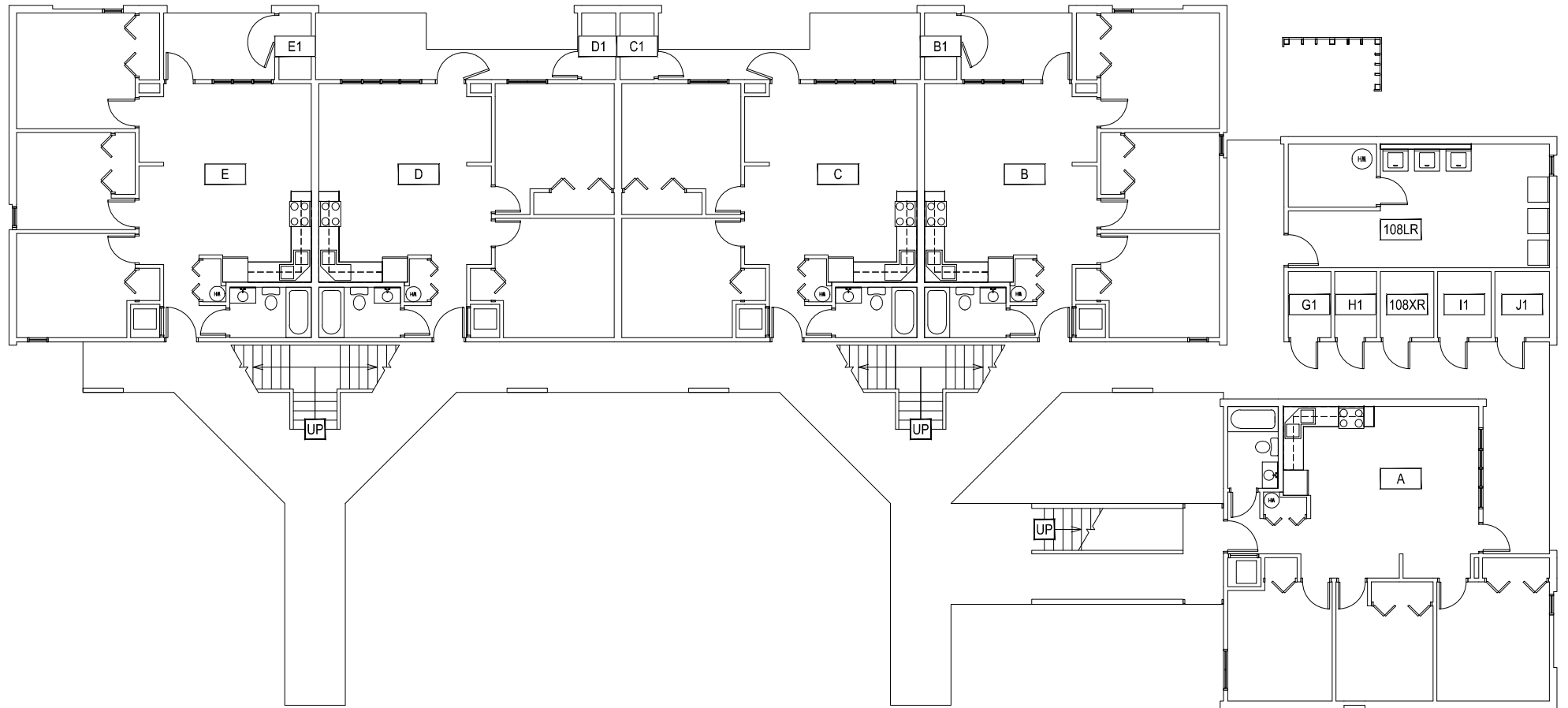


M MONTANA
STATE UNIVERSITY
FACILITIES PLANNING,
DESIGN & CONSTRUCTION
BOZEMAN, MONTANA
PHONE: 406.994.4131 FAX: 406.994.6572

INDEX #
39
BUILDING #
531108

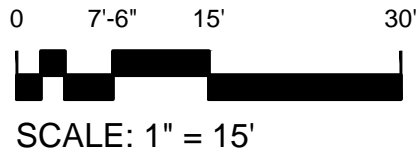
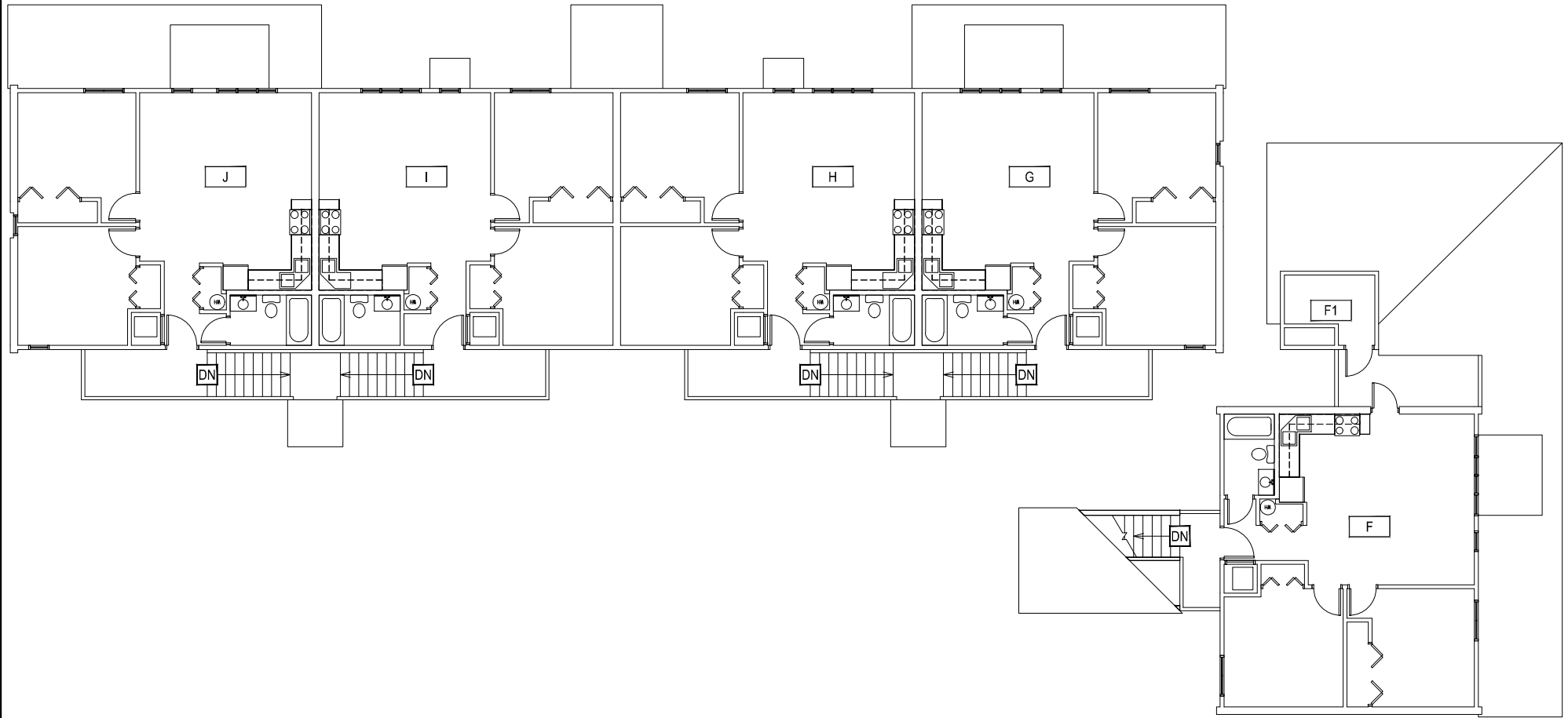
Sep 20, 2013 - 10:35am - 531108-A1.dwg
C:\Users\gary.grammervappdata\local\temp\AcPublish_840\



1 FIRST LEVEL
PAISLEY COURT FLATS

M MONTANA
STATE UNIVERSITY
FACILITIES PLANNING,
DESIGN & CONSTRUCTION
BOZEMAN, MONTANA
PHONE: 406.994.4131 FAX: 406.994.6572

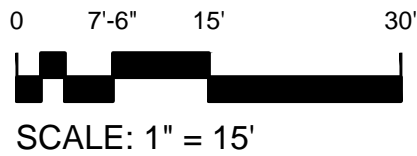
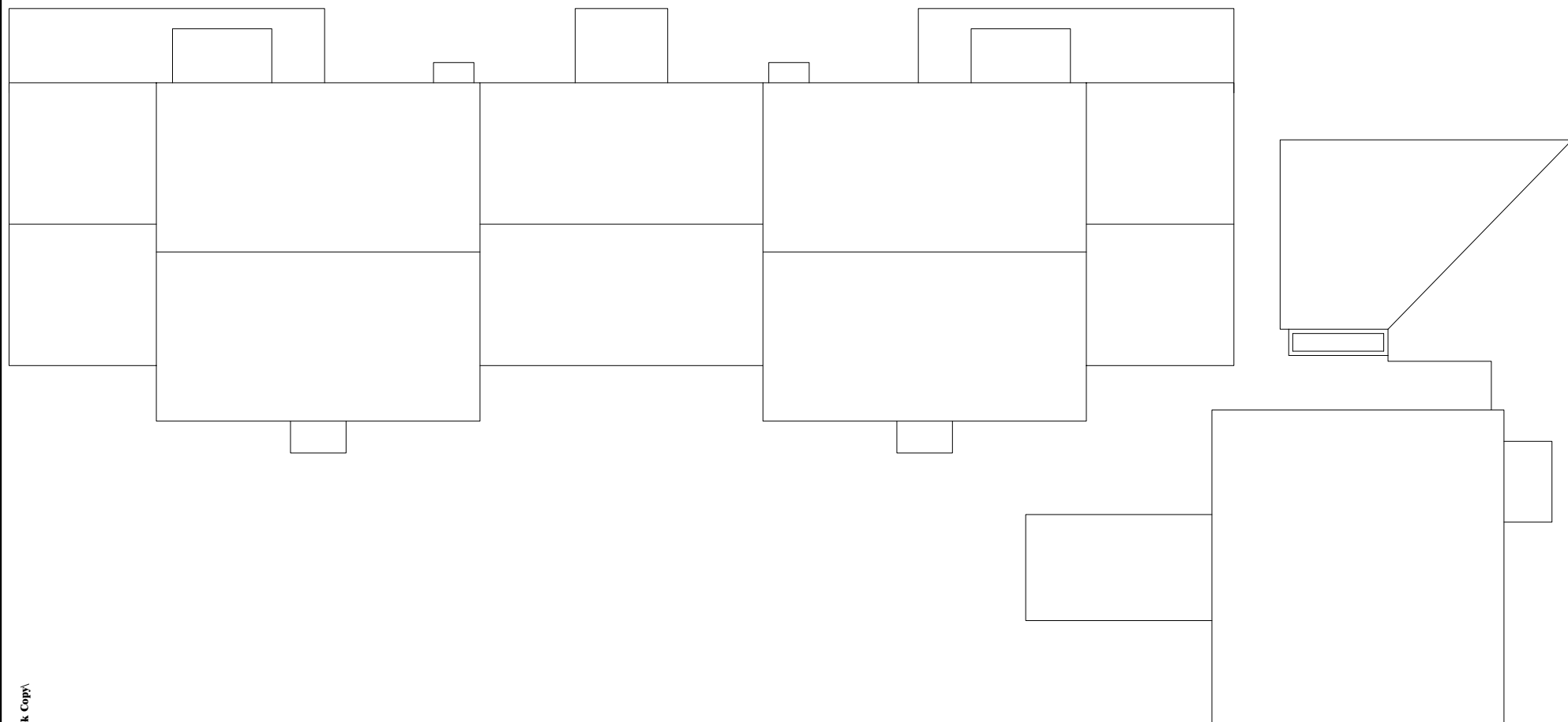
INDEX #
39
BUILDING #
531108




1 SECOND LEVEL
PAISLEY COURT FLATS

M MONTANA
STATE UNIVERSITY
FACILITIES PLANNING,
DESIGN & CONSTRUCTION
BOZEMAN, MONTANA
PHONE: 406.994.4131 FAX: 406.994.6572

INDEX #
39
BUILDING #
531108



1 ROOF LEVEL
PAISLEY COURT FLATS

| | |
|--|-----------------------------|
|  MONTANA STATE UNIVERSITY FACILITIES PLANNING, DESIGN & CONSTRUCTION BOZEMAN, MONTANA PHONE: 406.994.4131 FAX: 406.994.6572 | INDEX # 39 |
| | BUILDING # 531108 |