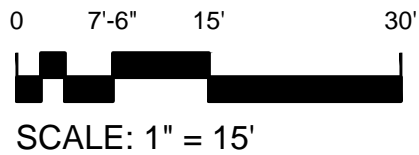
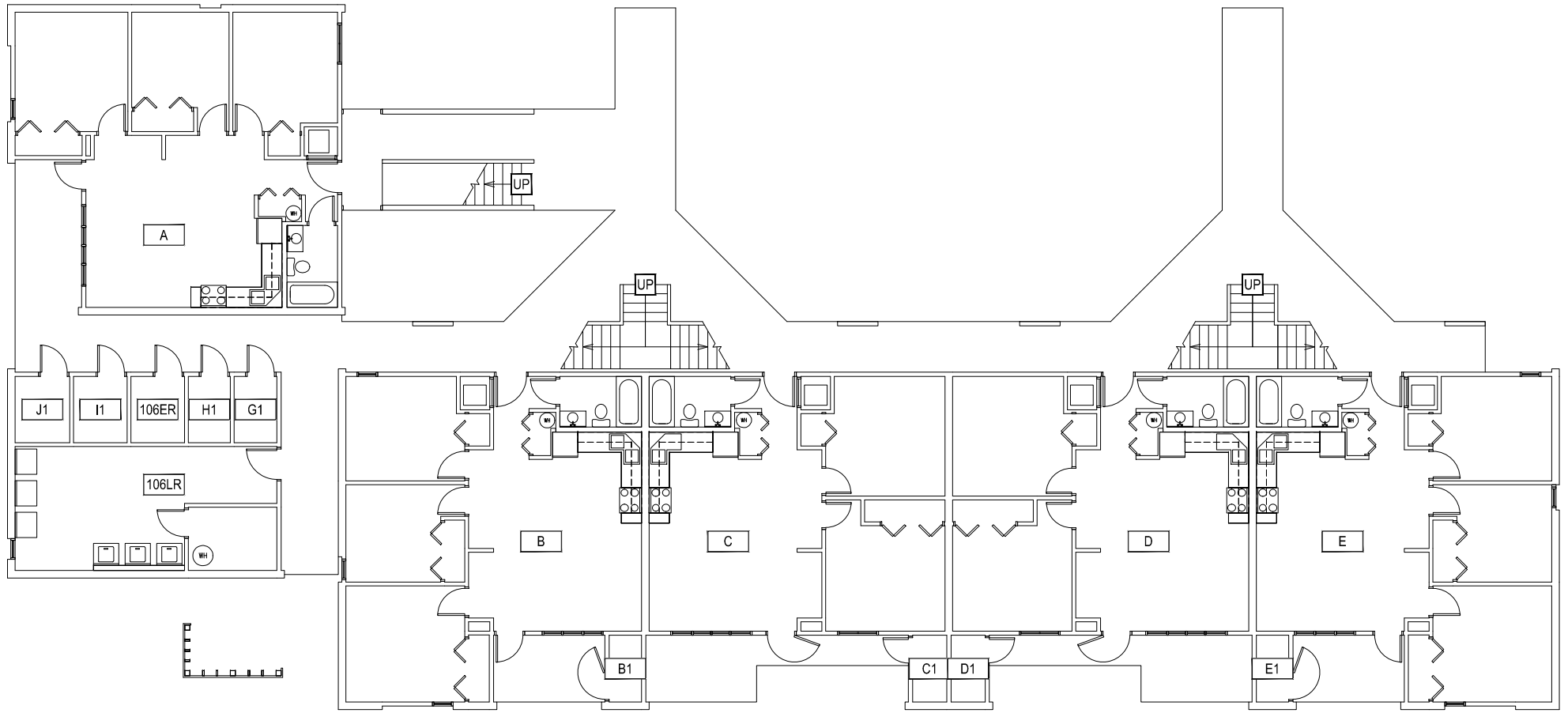


1 BASEMENT LEVEL
PAISLEY COURT FLATS

M MONTANA
STATE UNIVERSITY
FACILITIES PLANNING,
DESIGN & CONSTRUCTION
BOZEMAN, MONTANA
PHONE: 406.994.4131 FAX: 406.994.6572

INDEX #
39
BUILDING #
531106

Sep 20, 2013 - 10:26am - 531106-11.dwg
C:\Users\gary.granvapp\data\local\temp\AcPublish_840\



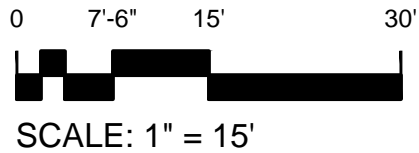
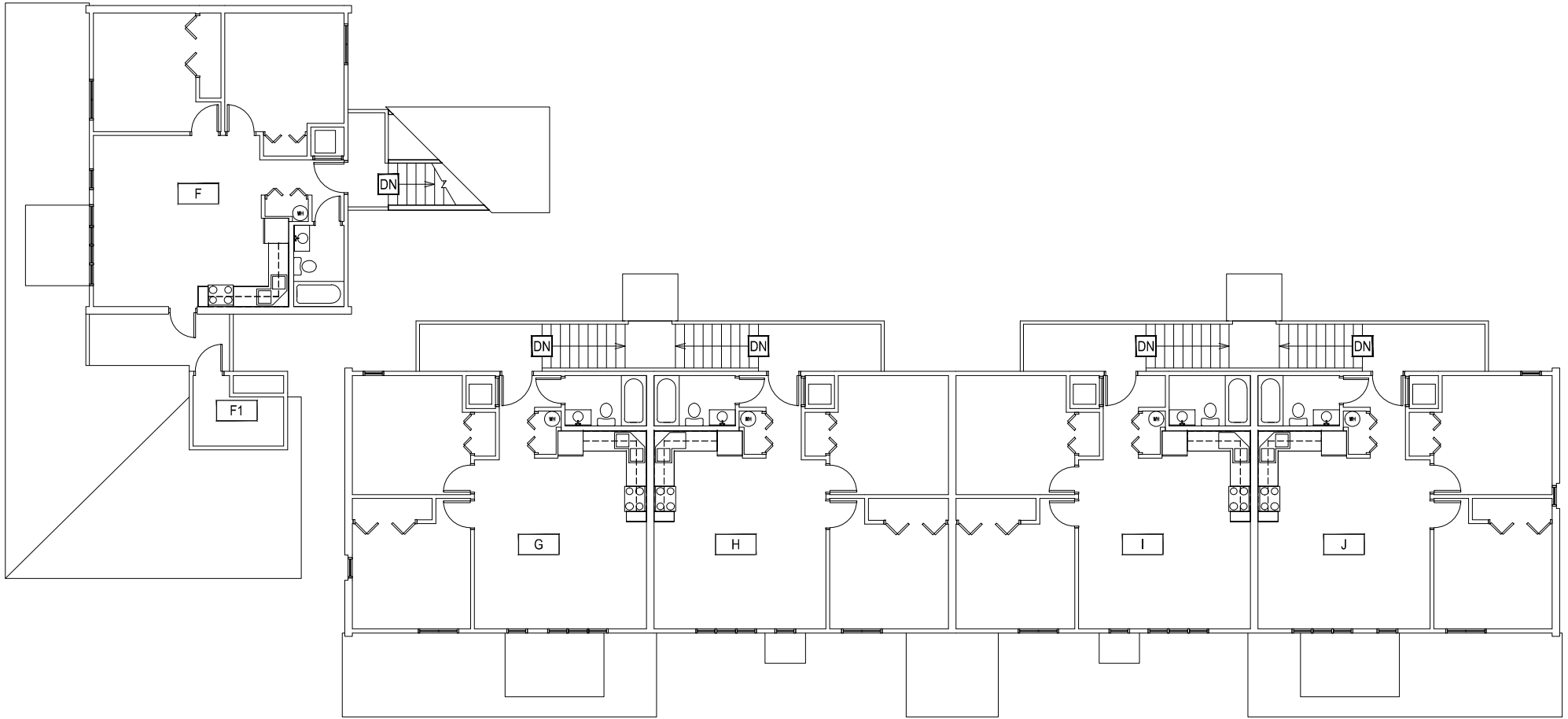
1 FIRST LEVEL
PAISLEY COURT FLATS

M MONTANA STATE UNIVERSITY
FACILITIES PLANNING,
DESIGN & CONSTRUCTION
BOZEMAN, MONTANA
PHONE: 406.994.4131 FAX: 406.994.6572

INDEX #
39

BUILDING #
531106

Sep 20, 2013 - 10:26am - 531106-12.dwg
C:\Users\gary.grammervappdata\local\temp\AcPublish_8400\

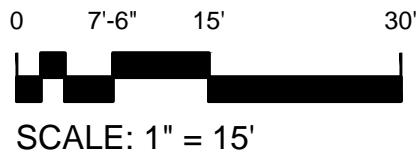
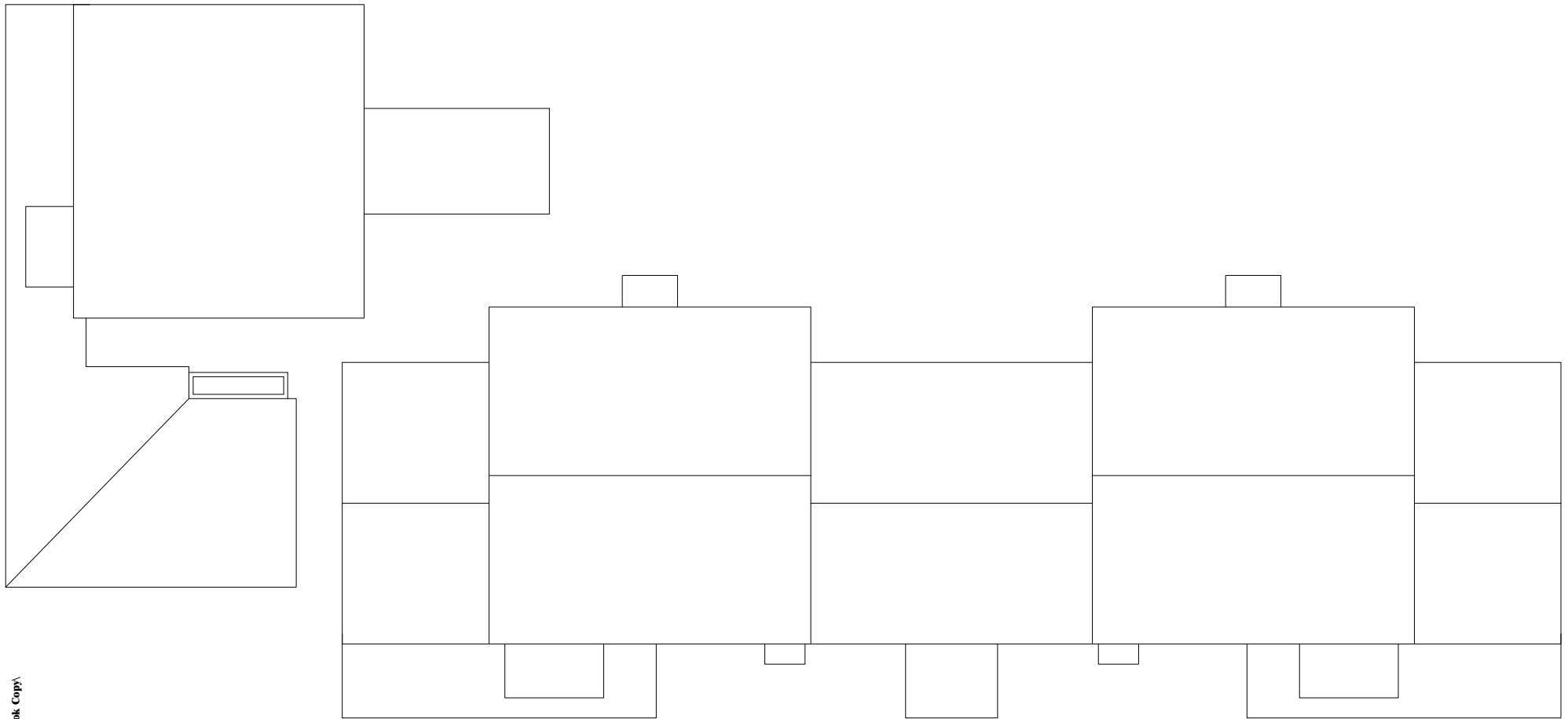


SECOND LEVEL
PAISLEY COURT FLATS

MONTANA STATE UNIVERSITY
FACILITIES PLANNING,
DESIGN & CONSTRUCTION
BOZEMAN, MONTANA
PHONE: 406.994.4131 FAX: 406.994.6572

INDEX #	39
BUILDING #	531106

Sep 20, 2013 - 10:26am - 531106-AR.dwg
H:\vanity Housing\Paisley Court Flats\Building Plan - Book Copy\



M MONTANA
STATE UNIVERSITY
FACILITIES PLANNING,
DESIGN & CONSTRUCTION
BOZEMAN, MONTANA
PHONE: 406.994.4131 FAX: 406.994.6572

INDEX #
39
BUILDING #
531106