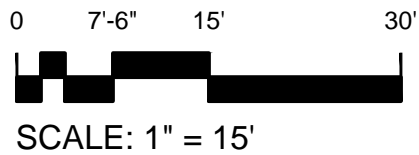
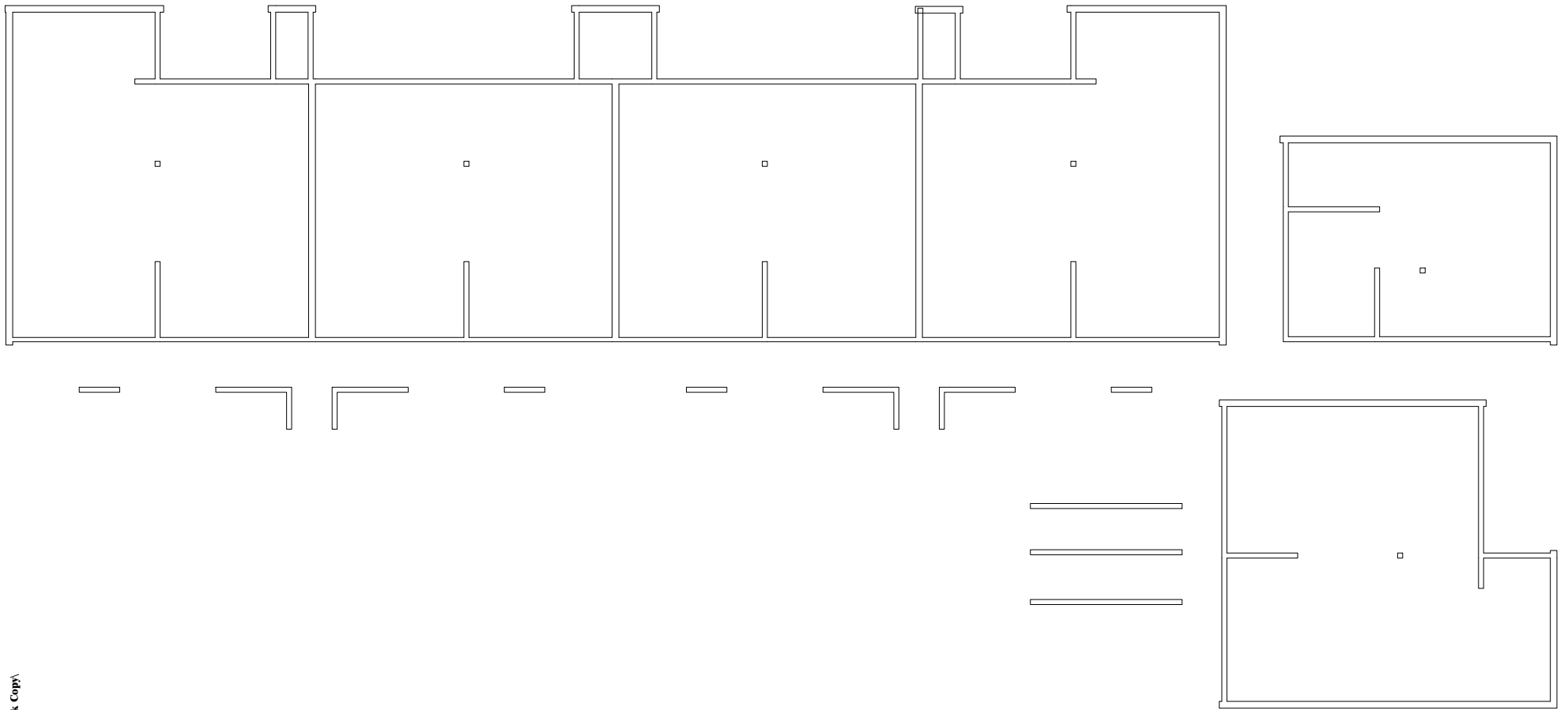


Sep 20, 2013 - 10:17am - 531103-AB.dwg
H:\Family Housing\Paisley Court Flats\Building Plan - Book Copy\A

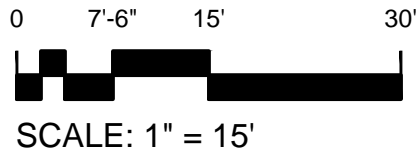
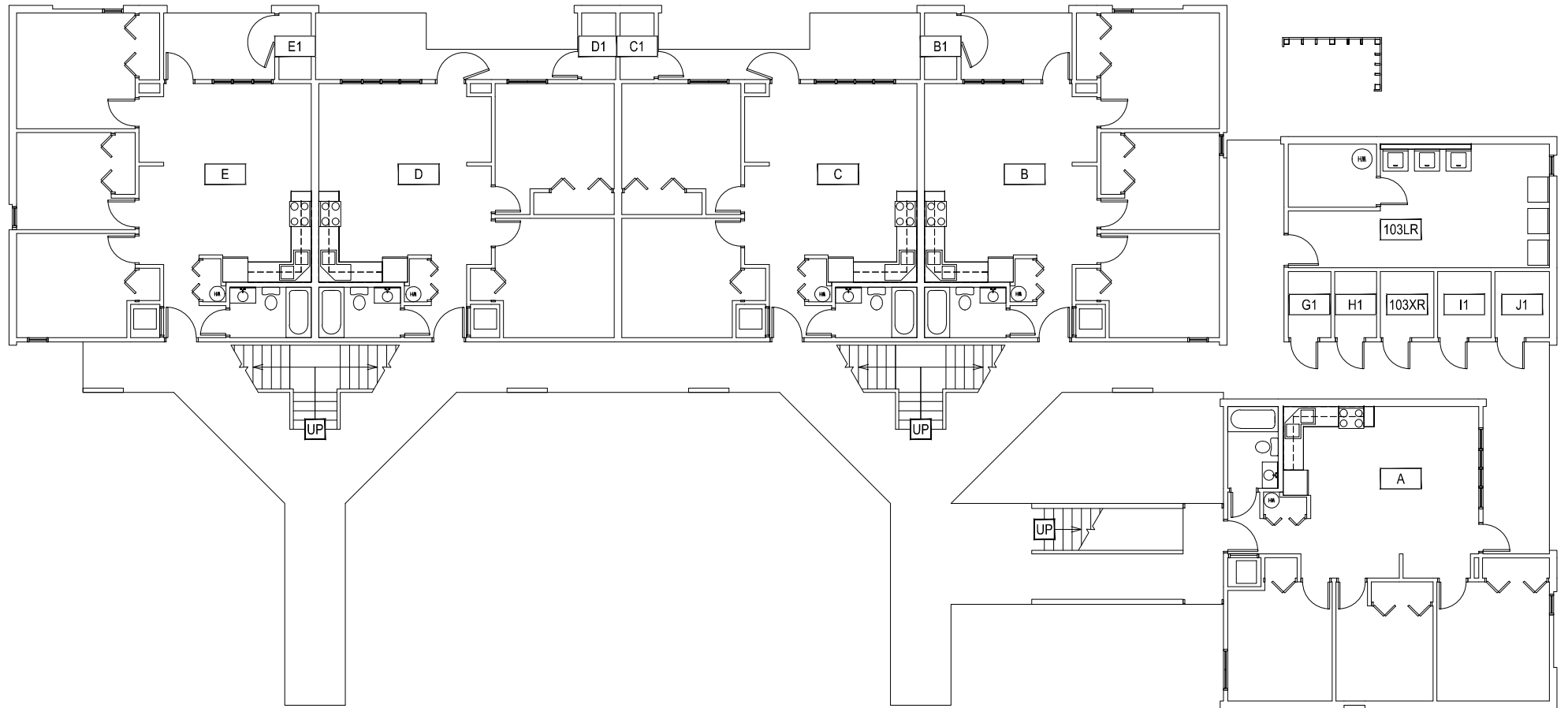


1 BASEMENT LEVEL
PAISLEY COURT FLATS

M MONTANA
STATE UNIVERSITY
FACILITIES PLANNING,
DESIGN & CONSTRUCTION
BOZEMAN, MONTANA
PHONE: 406.994.4131 FAX: 406.994.6572

INDEX #
39
BUILDING #
531103

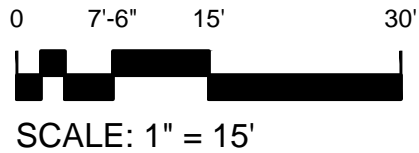
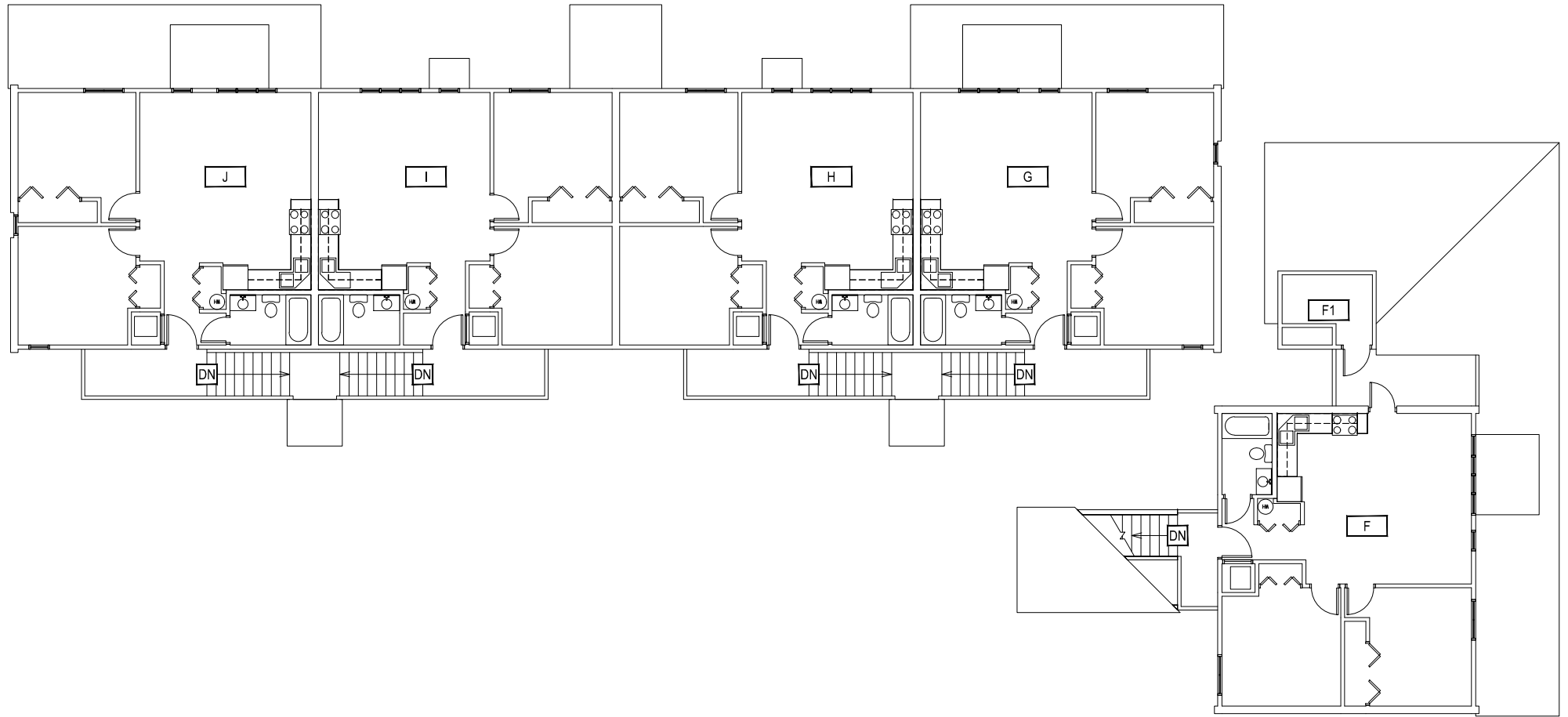
Sep 20, 2013 - 10:17am - 531103-A1.dwg
C:\Users\gary.grammery\pdata\local\temp\AcPublish_840\



1 FIRST LEVEL
PAISLEY COURT FLATS

M MONTANA
STATE UNIVERSITY
FACILITIES PLANNING,
DESIGN & CONSTRUCTION
BOZEMAN, MONTANA
PHONE: 406.994.4131 FAX: 406.994.6572

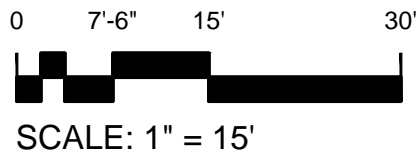
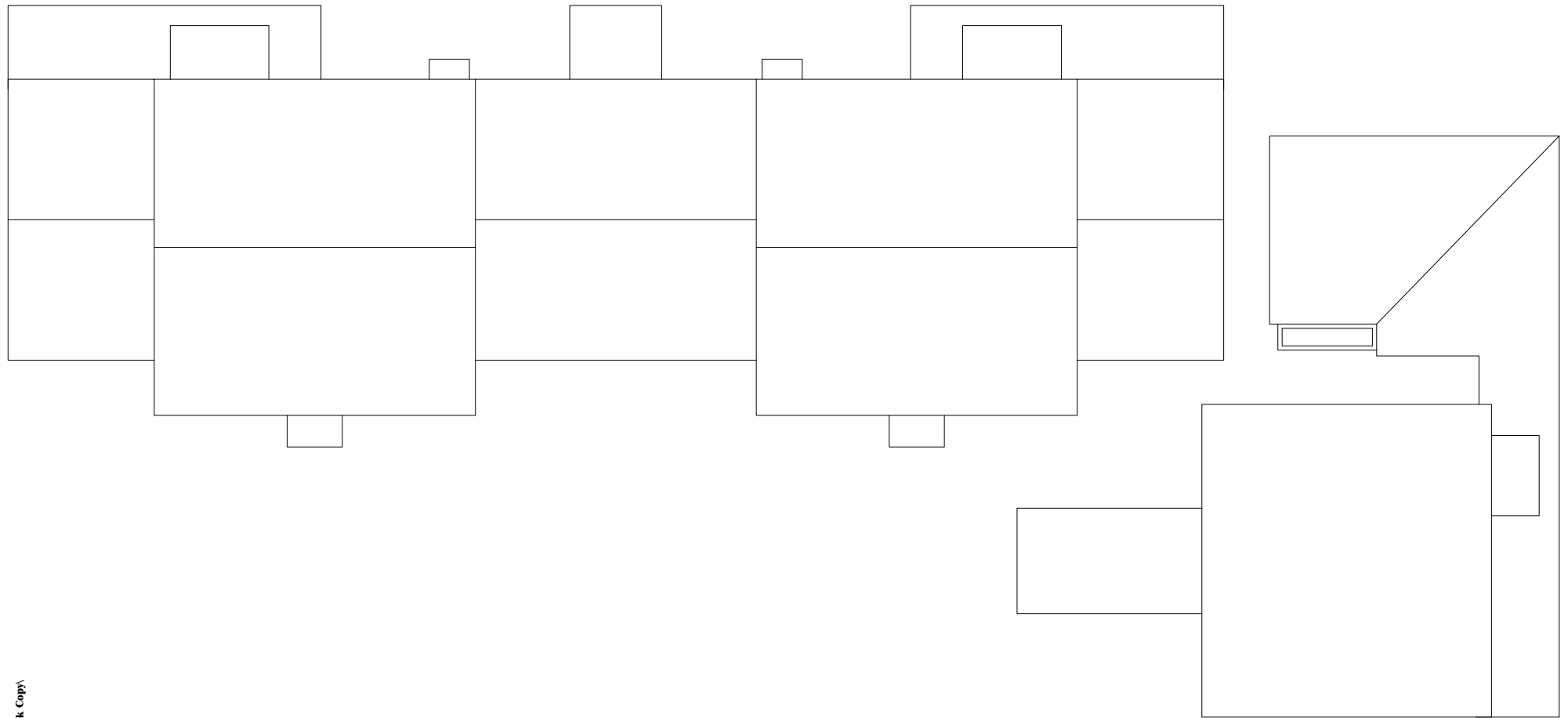
INDEX #
39
BUILDING #
531103



1 SECOND LEVEL
PAISLEY COURT FLATS

M MONTANA STATE UNIVERSITY
FACILITIES PLANNING,
DESIGN & CONSTRUCTION
BOZEMAN, MONTANA
PHONE: 406.994.4131 FAX: 406.994.6572

INDEX #
39
BUILDING #
531103



M MONTANA
STATE UNIVERSITY
FACILITIES PLANNING,
DESIGN & CONSTRUCTION
BOZEMAN, MONTANA
PHONE: 406.994.4131 FAX: 406.994.6572

| | |
|------------|---------------|
| INDEX # | 39 |
| BUILDING # | 531103 |