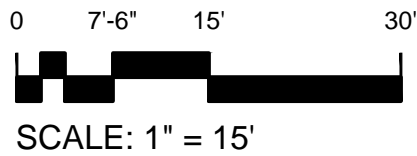
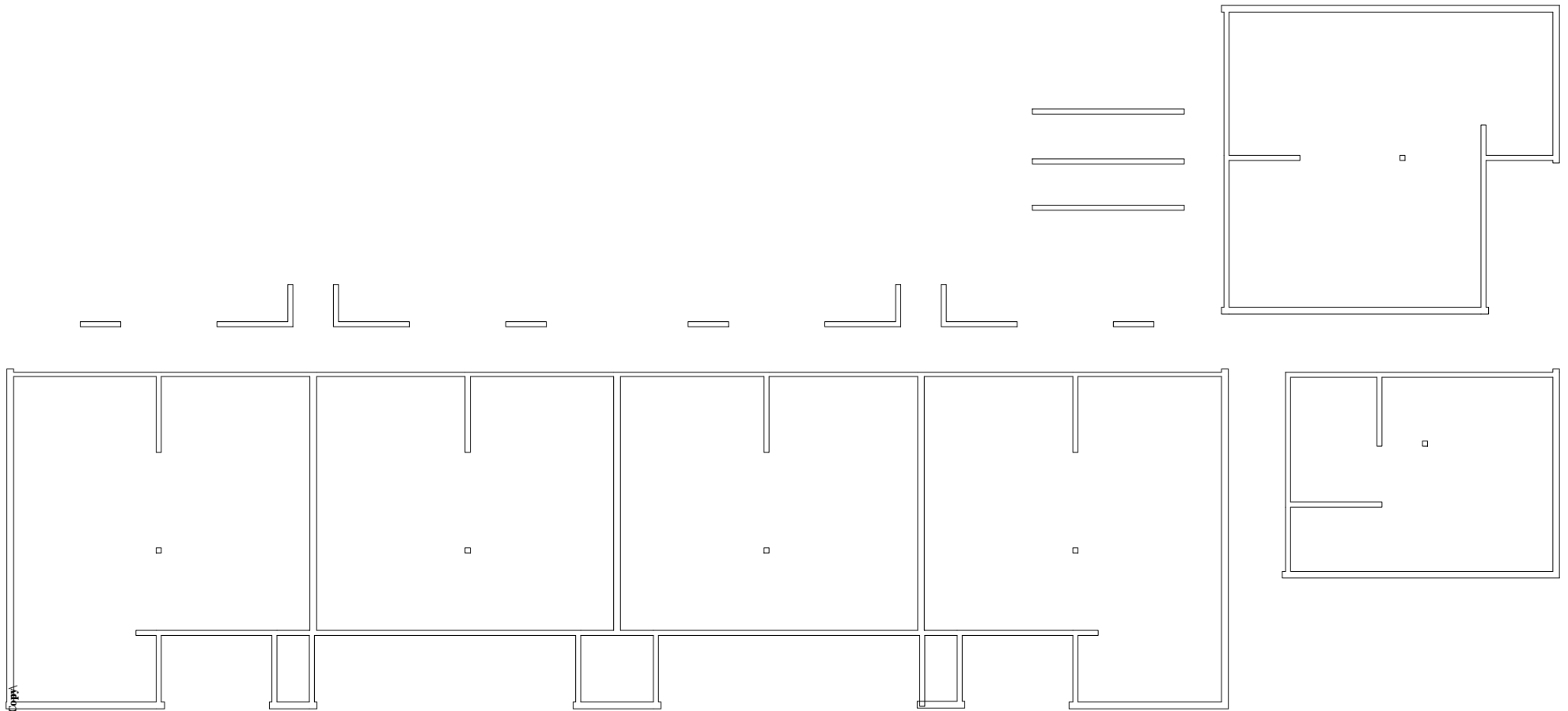


Sep 20, 2013 - 9:52am - 531102-AB.dwg
H:\Family Housing\Paisley Court Flats\Building Plan - Book Copy\A



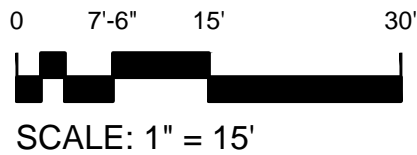
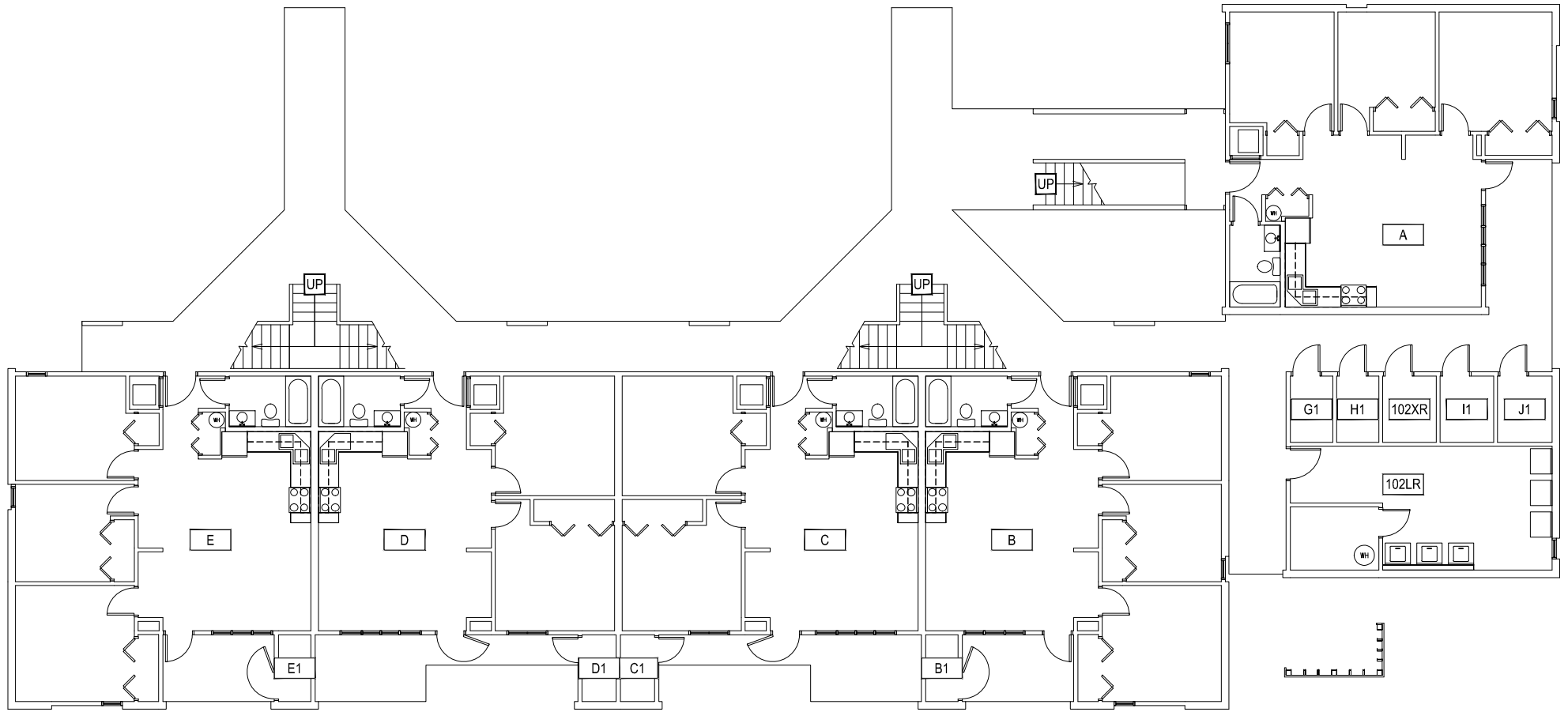
1 BASEMENT LEVEL
PAISLEY COURT FLATS

M MONTANA STATE UNIVERSITY
FACILITIES PLANNING,
DESIGN & CONSTRUCTION
BOZEMAN, MONTANA
PHONE: 406.994.4131 FAX: 406.994.6572

INDEX #
39

BUILDING #
531102

Sep 20, 2013 - 9:52am - 531102-A1.dwg
C:\Users\gary.granvapp\data\local\temp\AcPublish_8400\

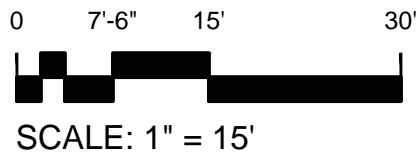
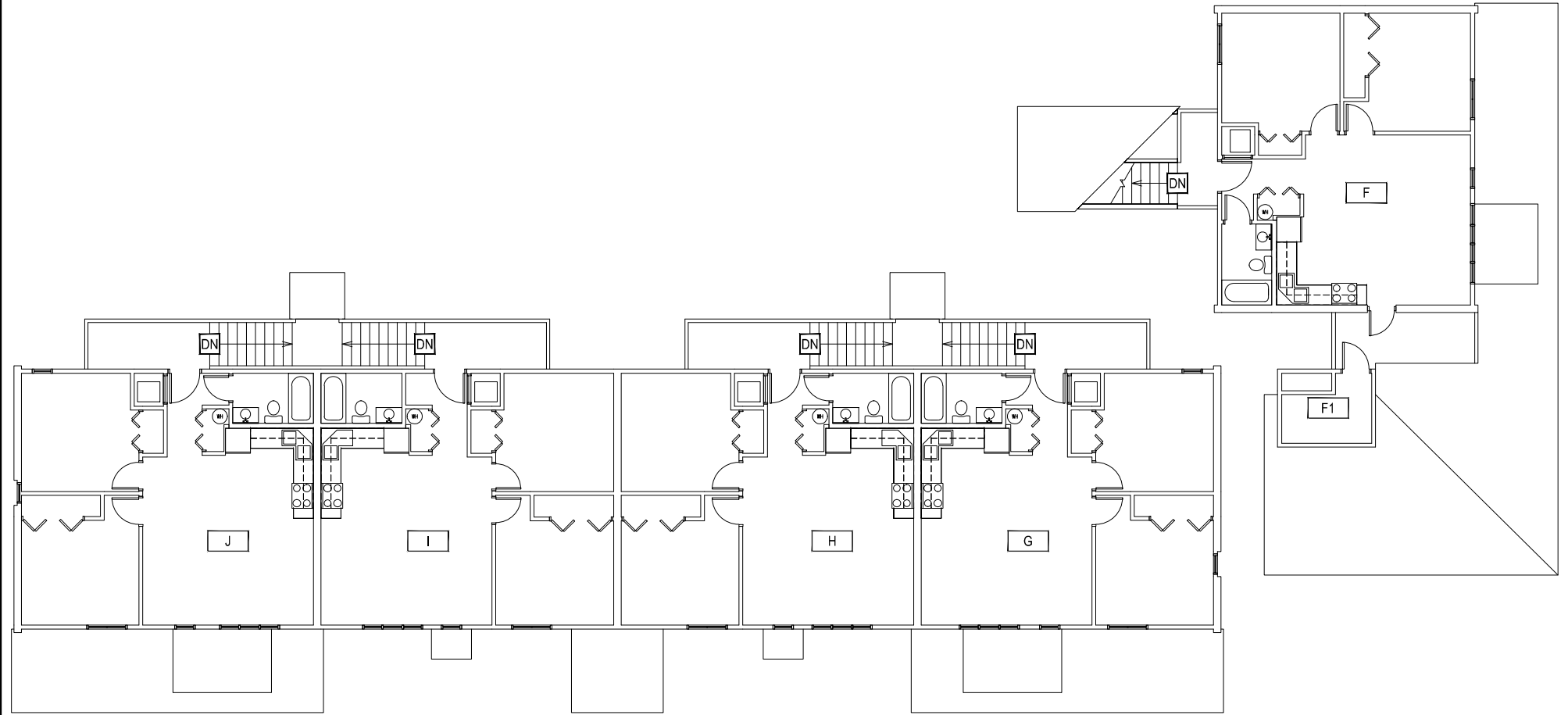


1 FIRST LEVEL
PAISLEY COURT FLATS

M MONTANA
STATE UNIVERSITY
FACILITIES PLANNING,
DESIGN & CONSTRUCTION
BOZEMAN, MONTANA
PHONE: 406.994.4131 FAX: 406.994.6572

INDEX #
39
BUILDING #
531102

Sep 20, 2013 - 9:52am - 531102-A2.dwg
C:\Users\gary.gramm\appdata\local\temp\AcPublish_840\

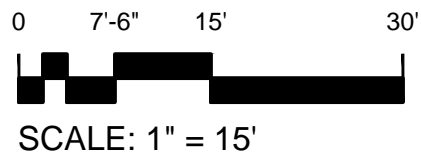
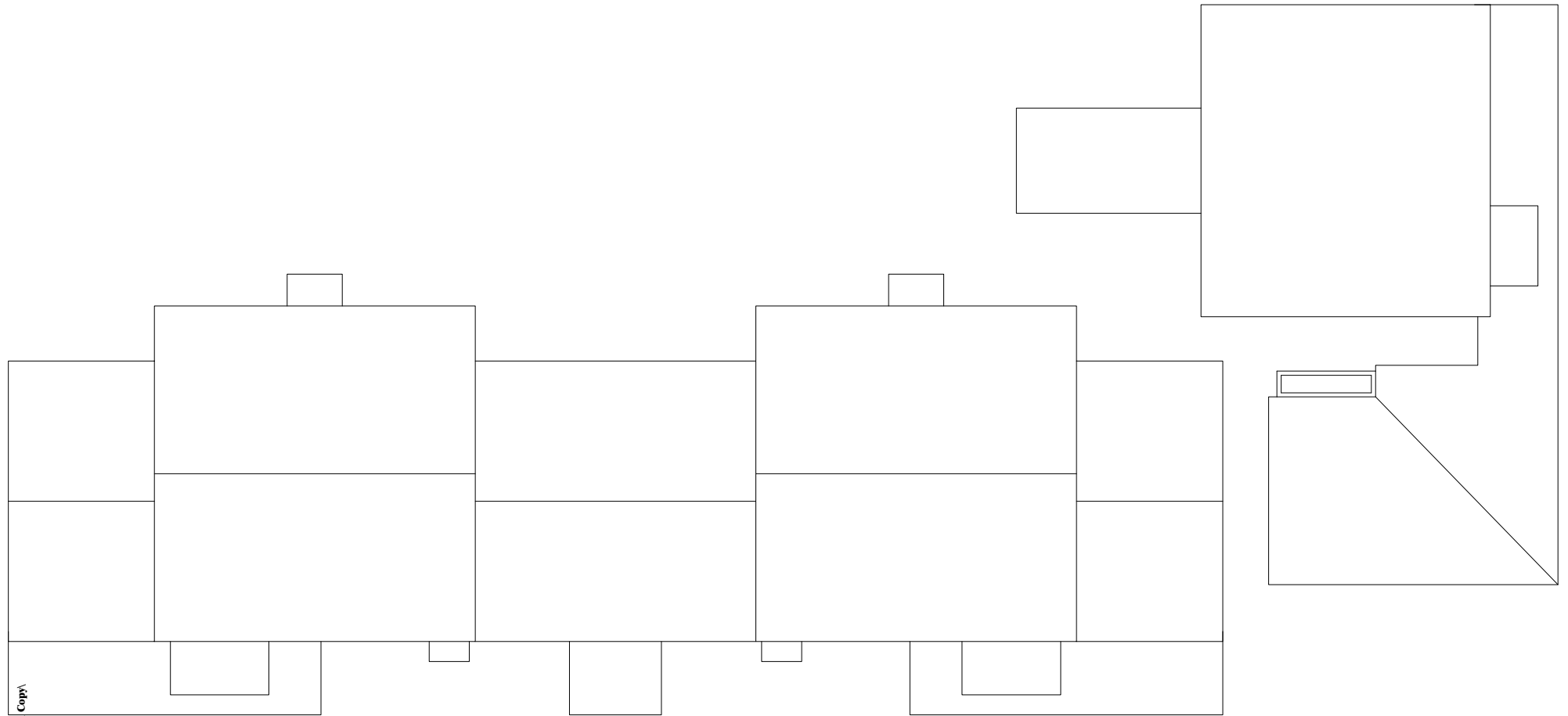


1 SECOND LEVEL
PAISLEY COURT FLATS

M MONTANA STATE UNIVERSITY
FACILITIES PLANNING,
DESIGN & CONSTRUCTION
BOZEMAN, MONTANA
PHONE: 406.994.4131 FAX: 406.994.6572

INDEX #	39
BUILDING #	531102

Sep 20, 2013 - 9:32am - 531102-AR.dwg
H:\Family Housing\Paisley Court Flats\Building Plan - Book Copy\



M MONTANA
STATE UNIVERSITY
FACILITIES PLANNING,
DESIGN & CONSTRUCTION
BOZEMAN, MONTANA
PHONE: 406.994.4131 FAX: 406.994.6572

INDEX #
39
BUILDING #
531102