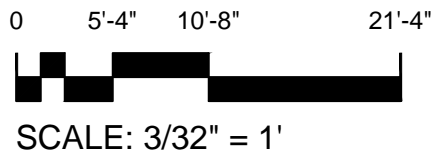
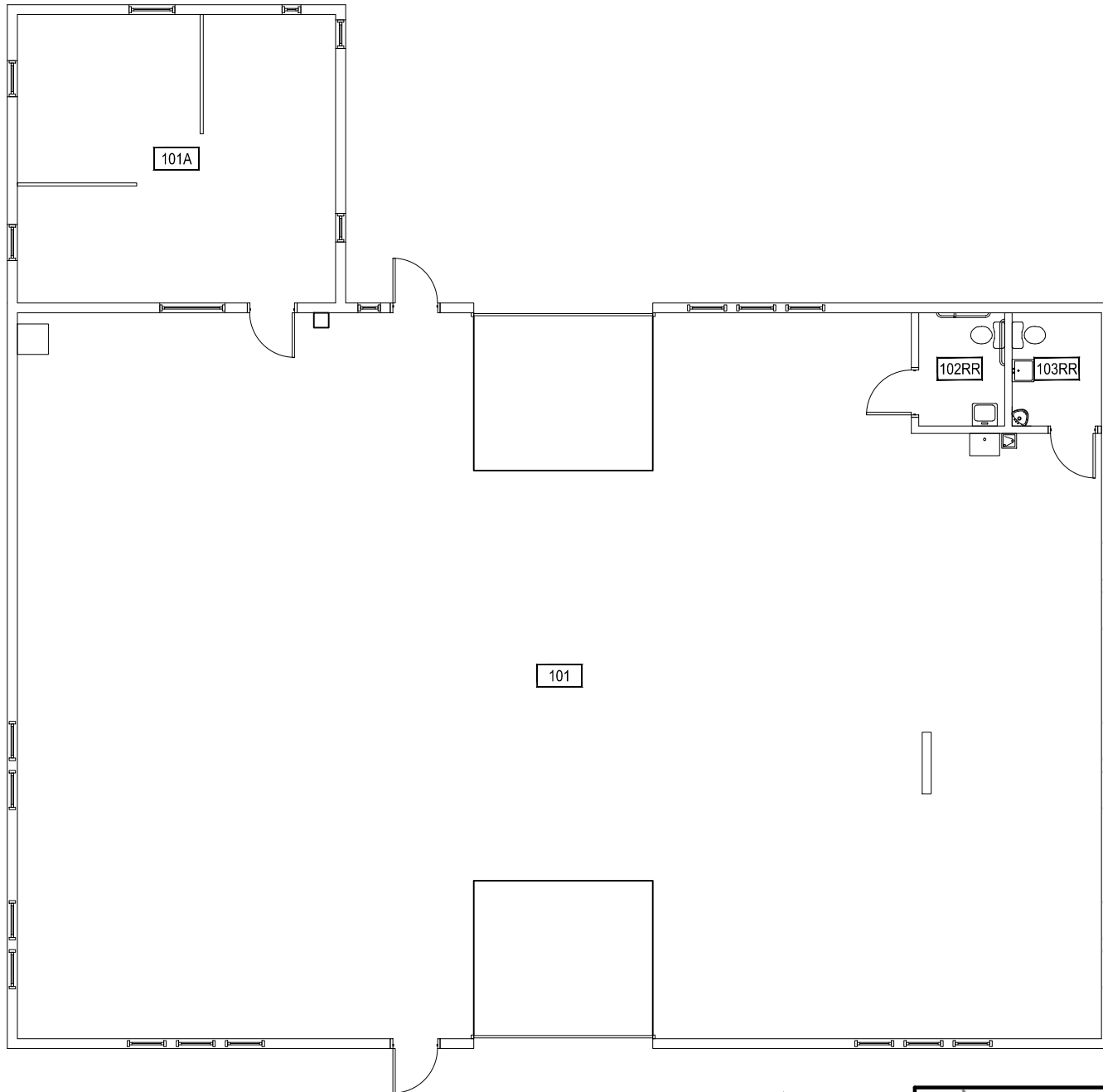
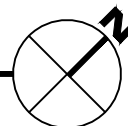


Oct05, 2012 - 10:05am - 530_A1.dwg
HEFS Campus Stores/Building Plan - Book Copy



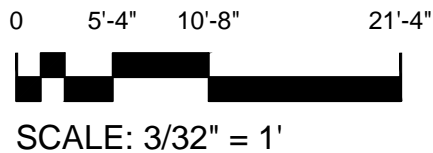
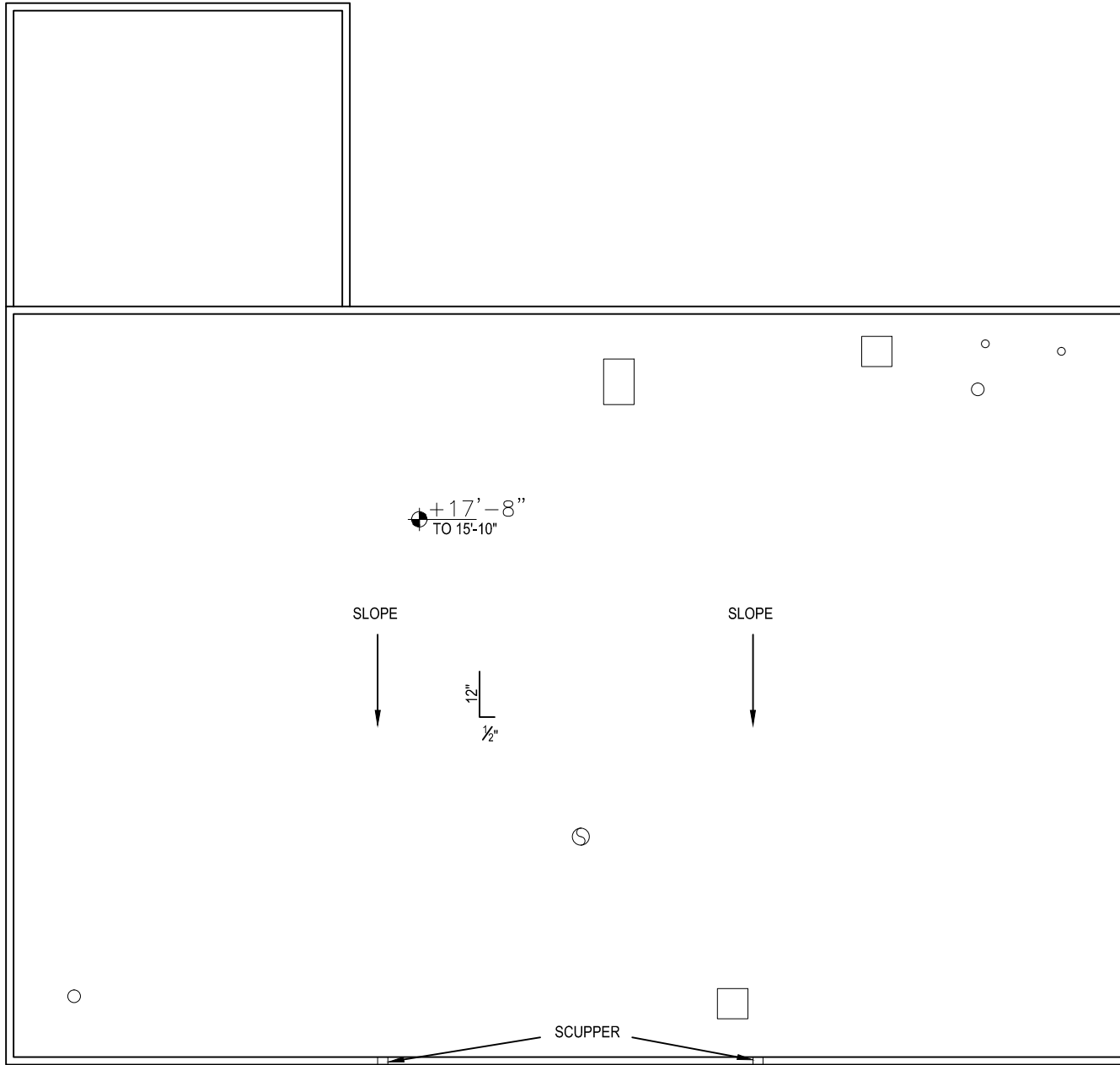
1 FIRST LEVEL
FS CAMPUS STORES



M MONTANA
STATE UNIVERSITY
FACILITIES PLANNING,
DESIGN & CONSTRUCTION
BOZEMAN, MONTANA
PHONE: 406.994.4131 FAX: 406.994.6572

INDEX #	16
BUILDING #	530

Oct05, 2012 - 10:05am - 530_AR.dwg
HEFS Campus Stores/Building Plan - Book Copy



M MONTANA
STATE UNIVERSITY
FACILITIES PLANNING,
DESIGN & CONSTRUCTION
BOZEMAN, MONTANA
PHONE: 406.994.4131 FAX: 406.994.6572

INDEX #	16
BUILDING #	530