
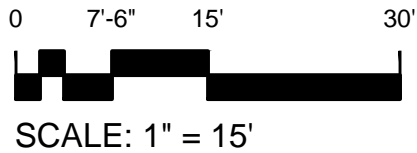
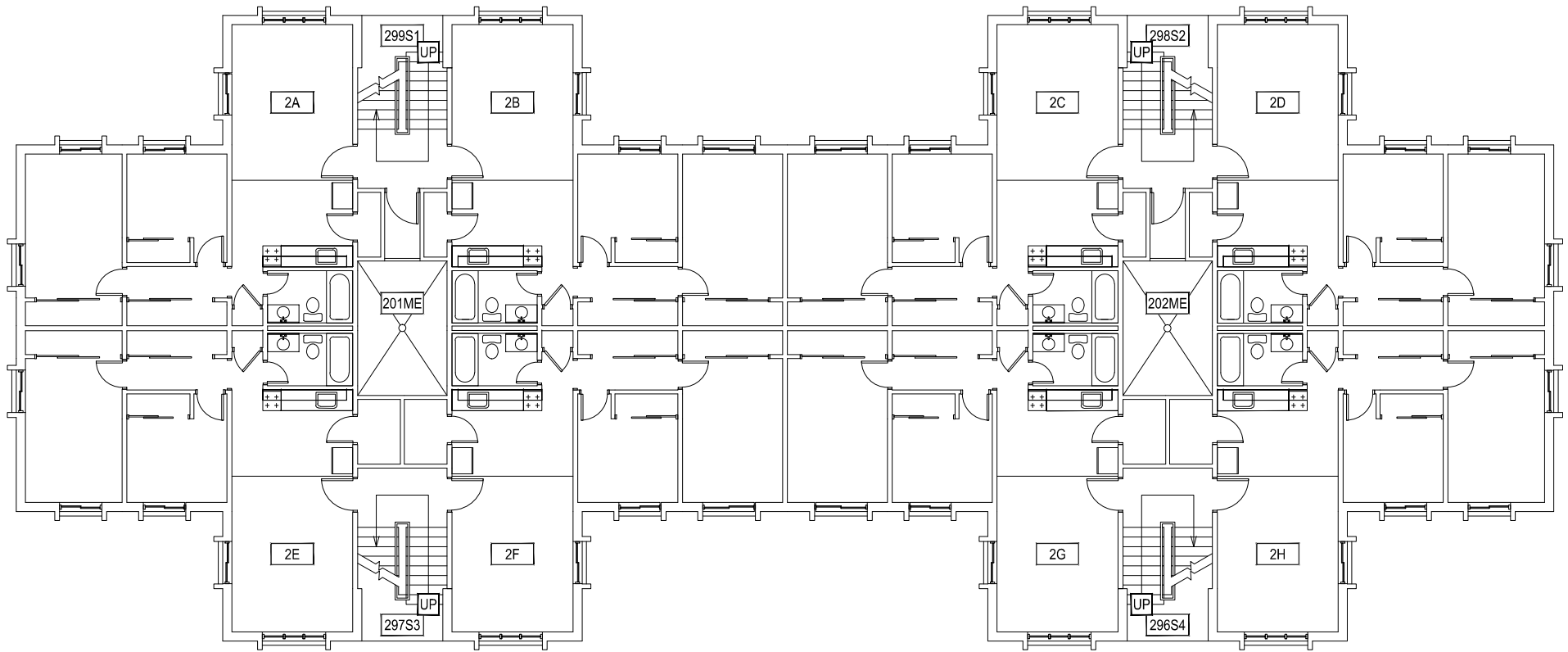



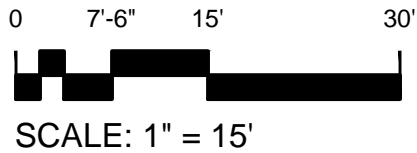
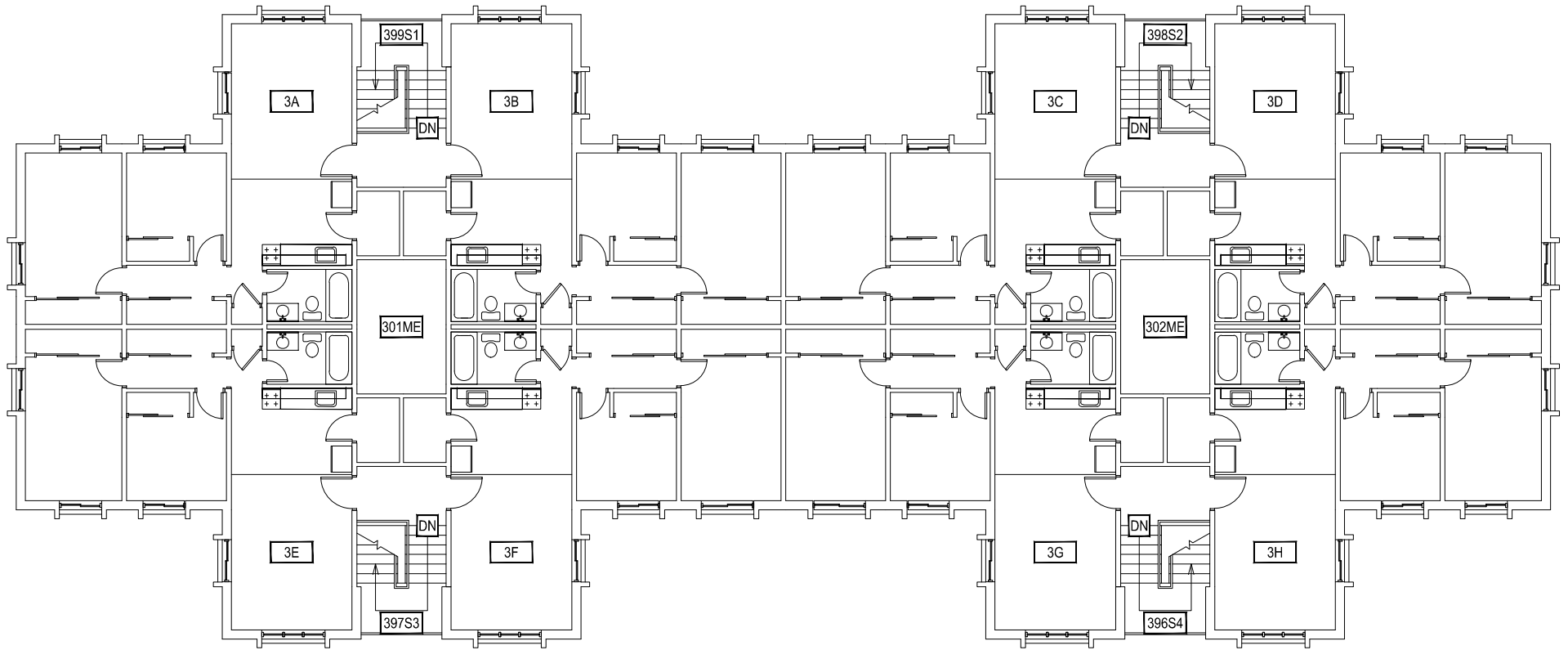
1 FIRST LEVEL
GRANT CHMBERLAIN APARTMENTS

 MONTANA STATE UNIVERSITY FACILITIES PLANNING, DESIGN & CONSTRUCTION BOZEMAN, MONTANA PHONE: 406.994.4131 FAX: 406.994.6572	INDEX # 39
	BUILDING # 528106




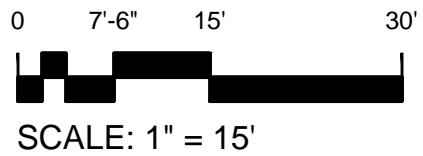
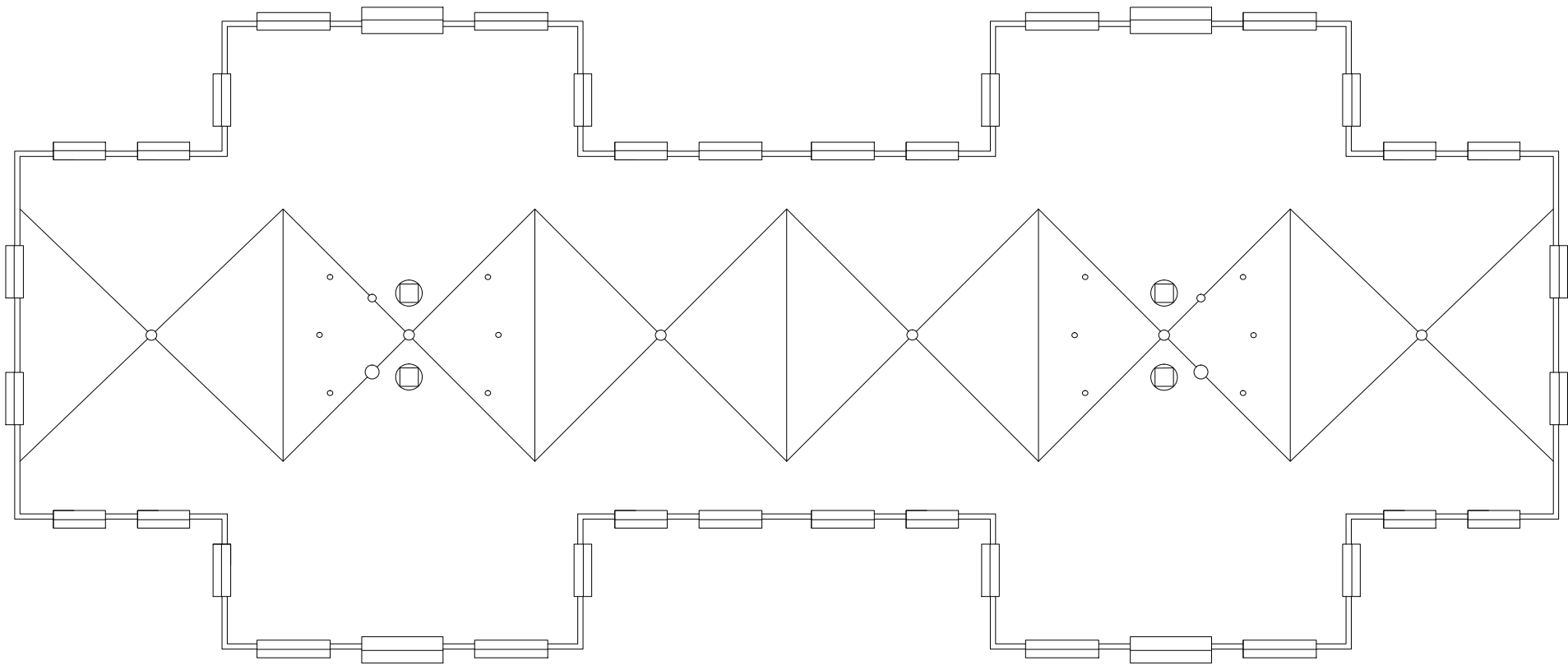
1 SECOND LEVEL
GRANT CHMBERLAIN APARTMENTS

 MONTANA STATE UNIVERSITY FACILITIES PLANNING, DESIGN & CONSTRUCTION BOZEMAN, MONTANA PHONE: 406.994.4131 FAX: 406.994.6572	INDEX # 39
	BUILDING # 528106




1 THIRD LEVEL
GRANT CHMBERLAIN APARTMENTS

 MONTANA STATE UNIVERSITY FACILITIES PLANNING, DESIGN & CONSTRUCTION BOZEMAN, MONTANA PHONE: 406.994.4131 FAX: 406.994.6572	INDEX # 39
	BUILDING # 528106



1 ROOF LEVEL
GRANT CHMBERLAIN APARTMENTS

 MONTANA STATE UNIVERSITY FACILITIES PLANNING, DESIGN & CONSTRUCTION BOZEMAN, MONTANA PHONE: 406.994.4131 FAX: 406.994.6572	INDEX # 39
	BUILDING # 528106