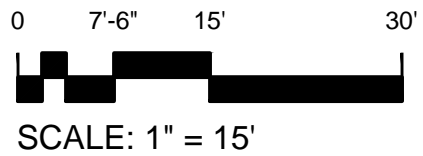
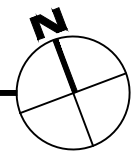


Sep 19, 2013 - 3:18pm - 528105_A1.dwg
 C:\Users\gary.grammerv\AppData\Local\Temp\AcPublish_8200\

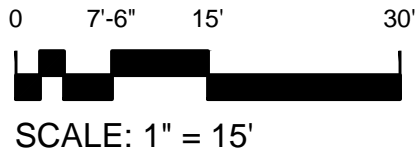
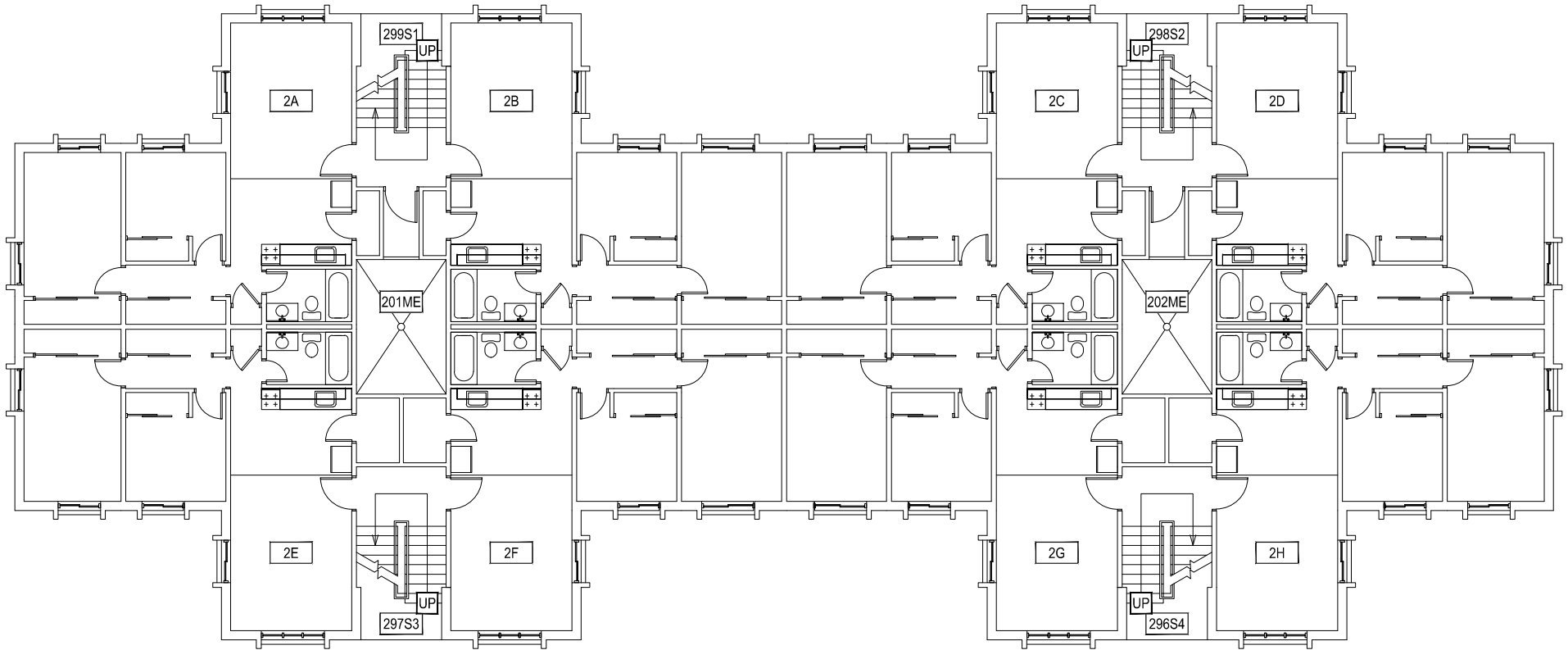


1
FIRST LEVEL
 GRANT CHMBERLAIN APARTMENTS



MONTANA STATE UNIVERSITY FACILITIES PLANNING, DESIGN & CONSTRUCTION BOZEMAN, MONTANA PHONE: 406.994.4131 FAX: 406.994.6572	INDEX # 39
	BUILDING # 528105

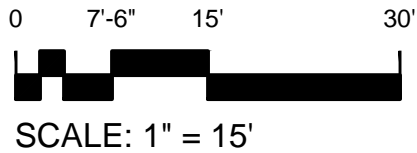
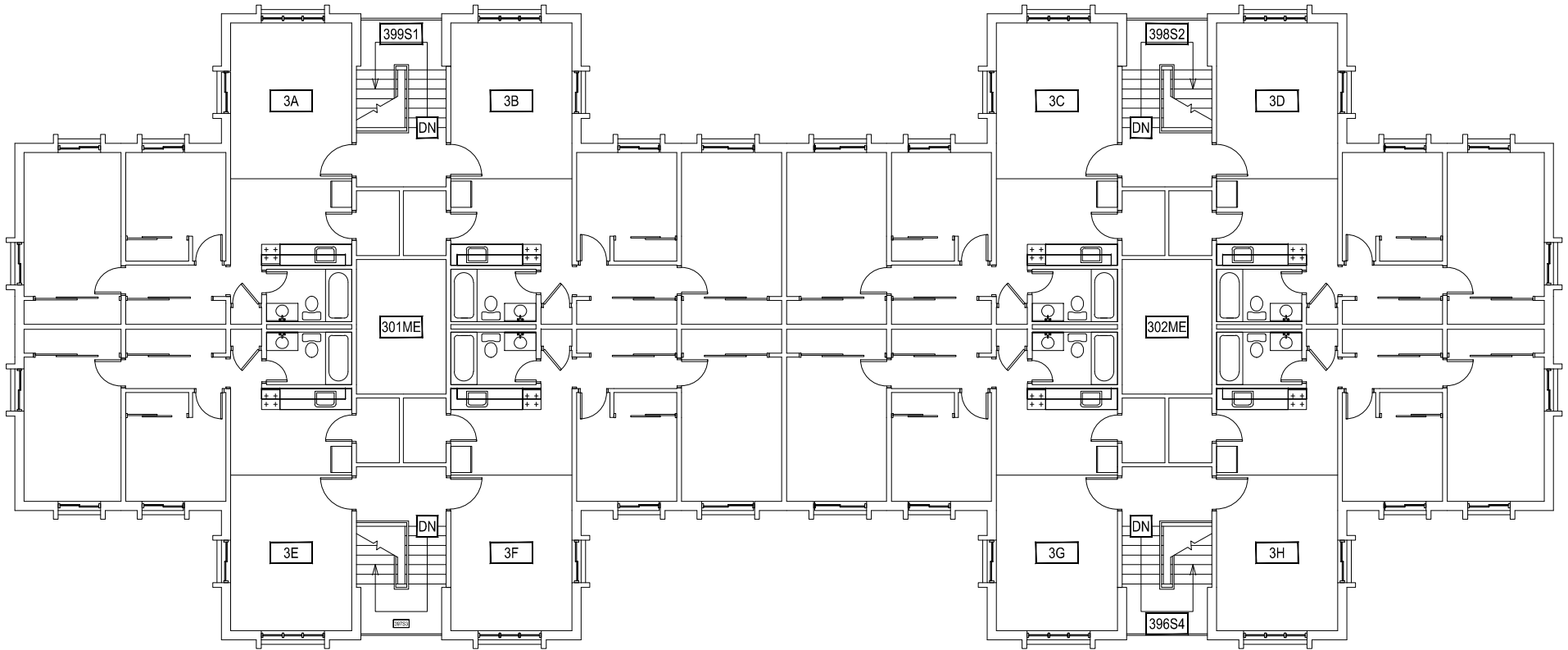
Sep 19, 2013 - 3:18pm - 528105_A2.dwg
C:\Users\gary.gramer\appdata\local\temp\AcPublish_8200\



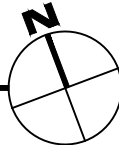
1 SECOND LEVEL
GRANT CHMBERLAIN APARTMENTS

M MONTANA
STATE UNIVERSITY
FACILITIES PLANNING,
DESIGN & CONSTRUCTION
BOZEMAN, MONTANA
PHONE: 406.994.4131 FAX: 406.994.6572

INDEX #
39
BUILDING #
528105

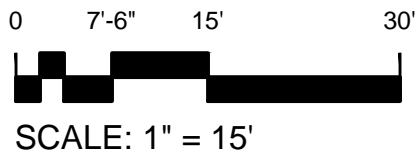
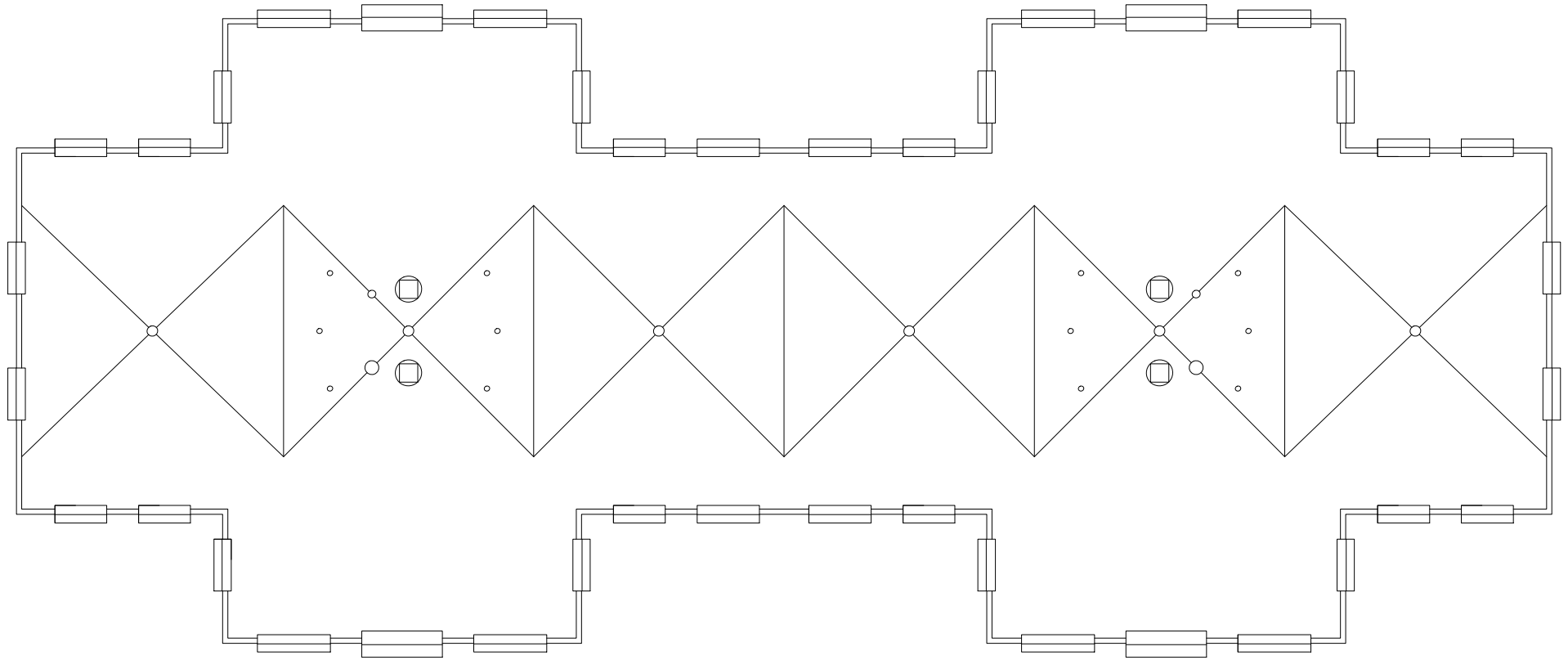



1 THIRD LEVEL
GRANT CHMBERLAIN APARTMENTS



M MONTANA
STATE UNIVERSITY
FACILITIES PLANNING,
DESIGN & CONSTRUCTION
BOZEMAN, MONTANA
PHONE: 406.994.4131 FAX: 406.994.6572

INDEX #
39
BUILDING #
528105



 MONTANA STATE UNIVERSITY FACILITIES PLANNING, DESIGN & CONSTRUCTION BOZEMAN, MONTANA PHONE: 406.994.4131 FAX: 406.994.6572	INDEX # 39
	BUILDING # 528105