
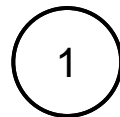
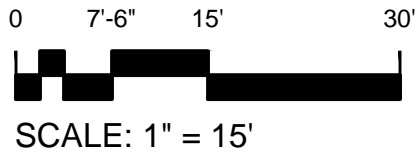
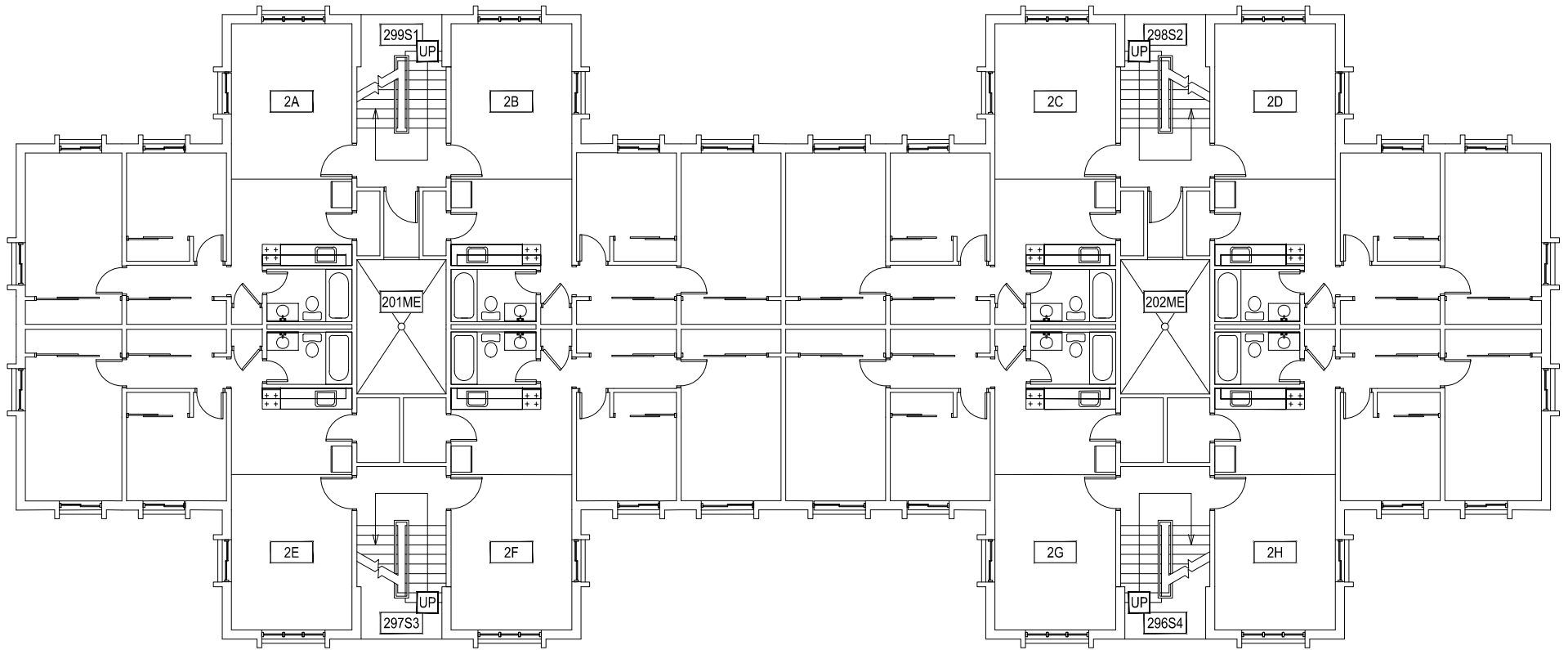
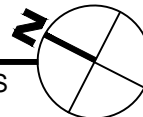



1 FIRST LEVEL
GRANT CHMBERLAIN APARTMENTS

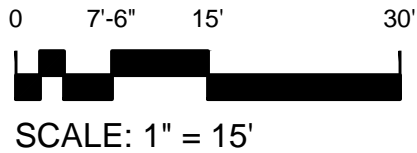
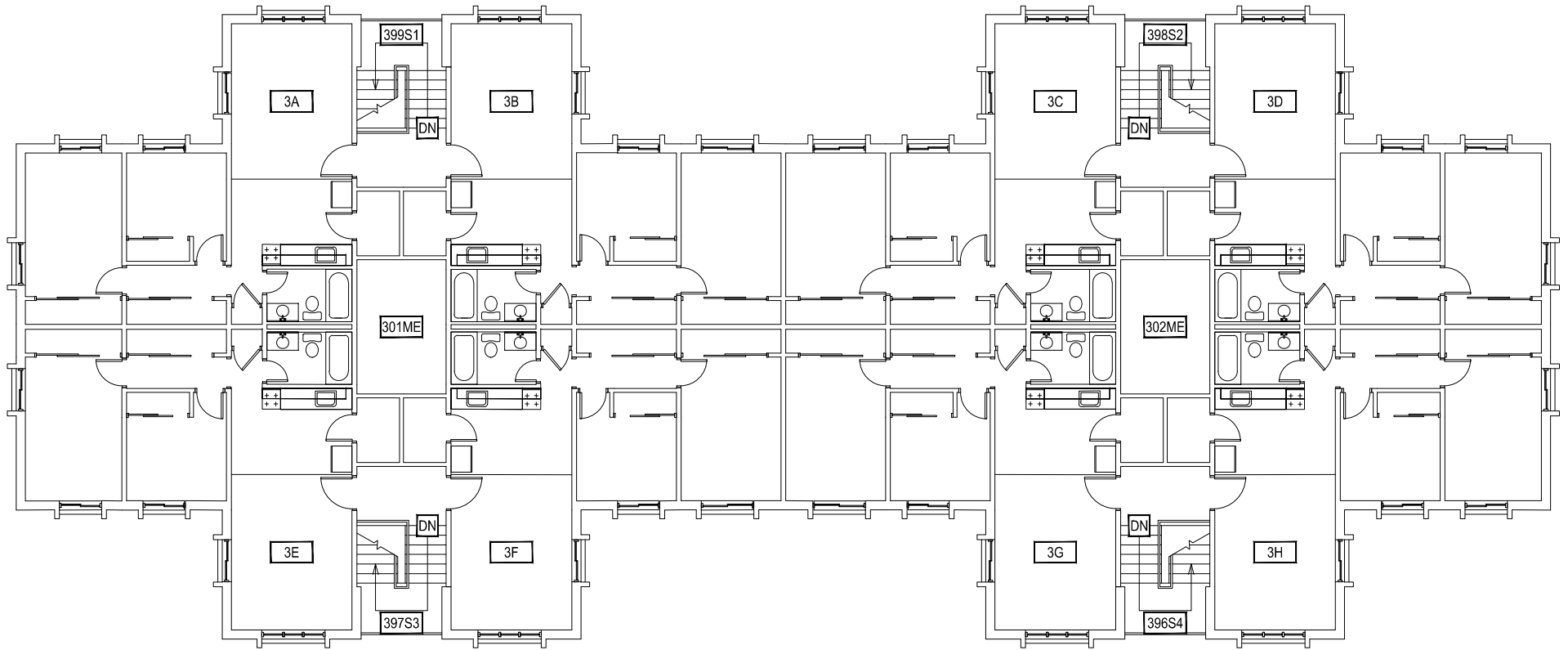
 MONTANA STATE UNIVERSITY FACILITIES PLANNING, DESIGN & CONSTRUCTION BOZEMAN, MONTANA PHONE: 406.994.4131 FAX: 406.994.6572	INDEX #
	39
	BUILDING #
	528104




SECOND LEVEL
GRANT CHMBERLAIN APARTMENTS

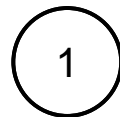
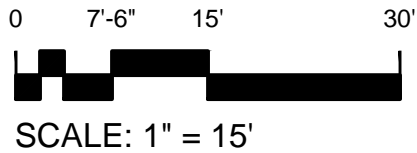
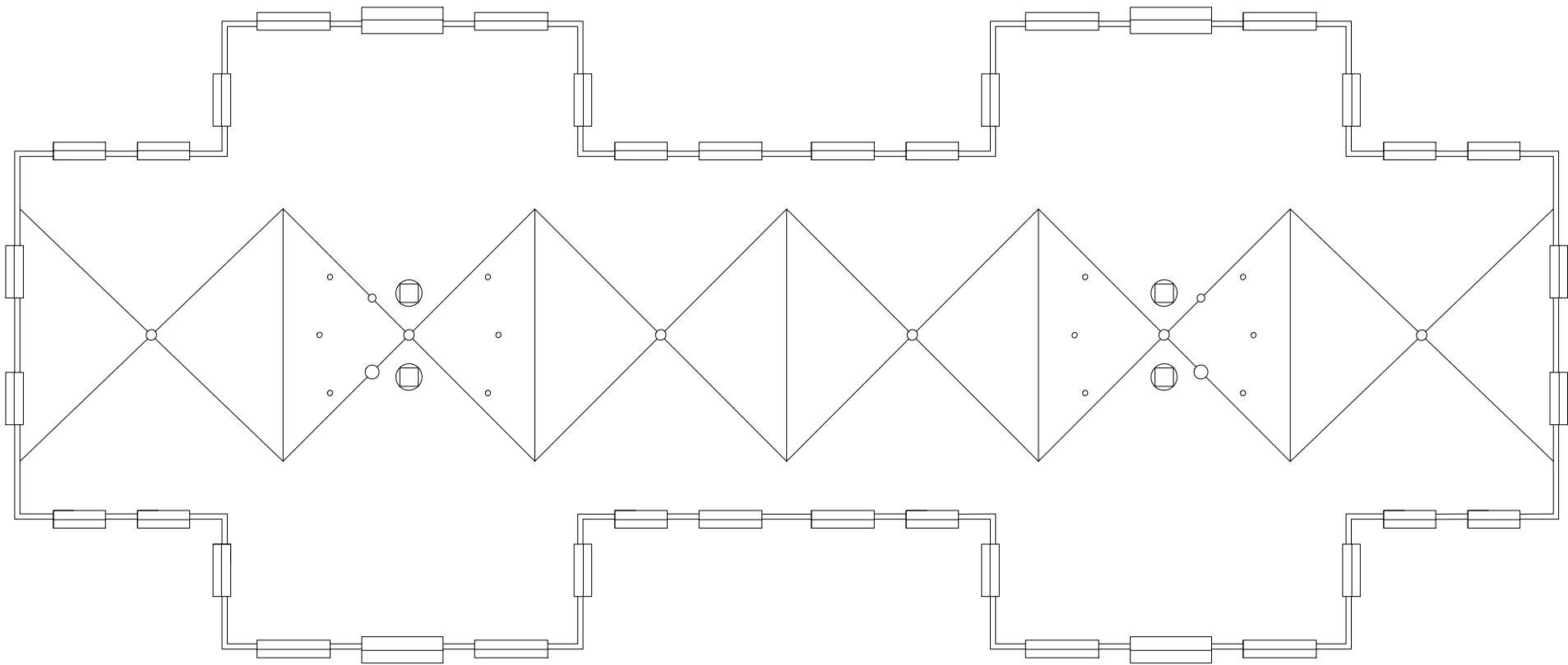


 MONTANA STATE UNIVERSITY FACILITIES PLANNING, DESIGN & CONSTRUCTION BOZEMAN, MONTANA PHONE: 406.994.4131 FAX: 406.994.6572	INDEX # 39
	BUILDING # 528104

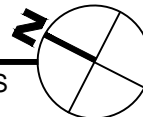


1 THIRD LEVEL
GRANT CHMBERLAIN APARTMENTS

 MONTANA STATE UNIVERSITY FACILITIES PLANNING, DESIGN & CONSTRUCTION BOZEMAN, MONTANA PHONE: 406.994.4131 FAX: 406.994.6572	INDEX # 39
	BUILDING # 528104



ROOF LEVEL
GRANT CHMBERLAIN APARTMENTS



M MONTANA
STATE UNIVERSITY
FACILITIES PLANNING,
DESIGN & CONSTRUCTION
BOZEMAN, MONTANA
PHONE: 406.994.4131 FAX: 406.994.6572

INDEX #	39
BUILDING #	528104