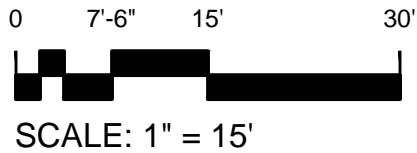
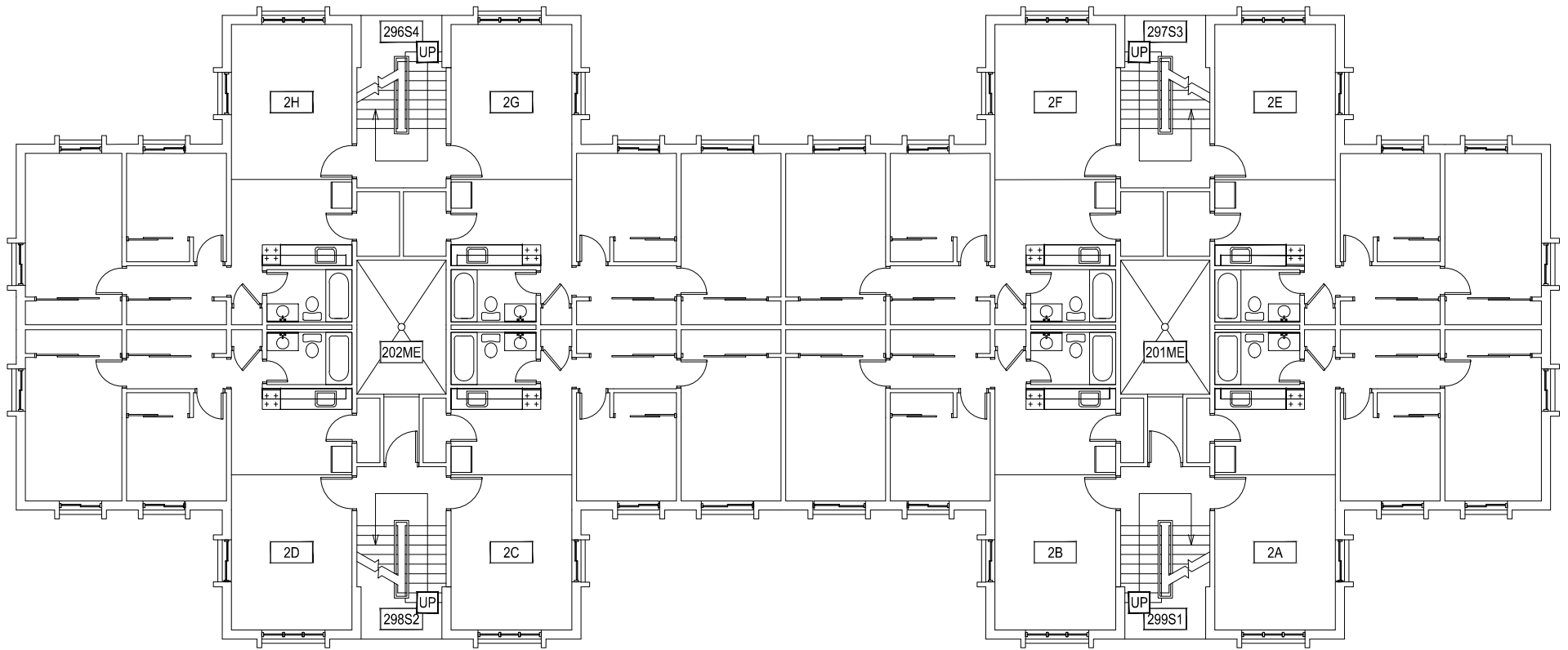


1 FIRST LEVEL
GRANT CHMBERLAIN APARTMENTS




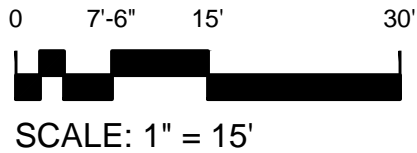
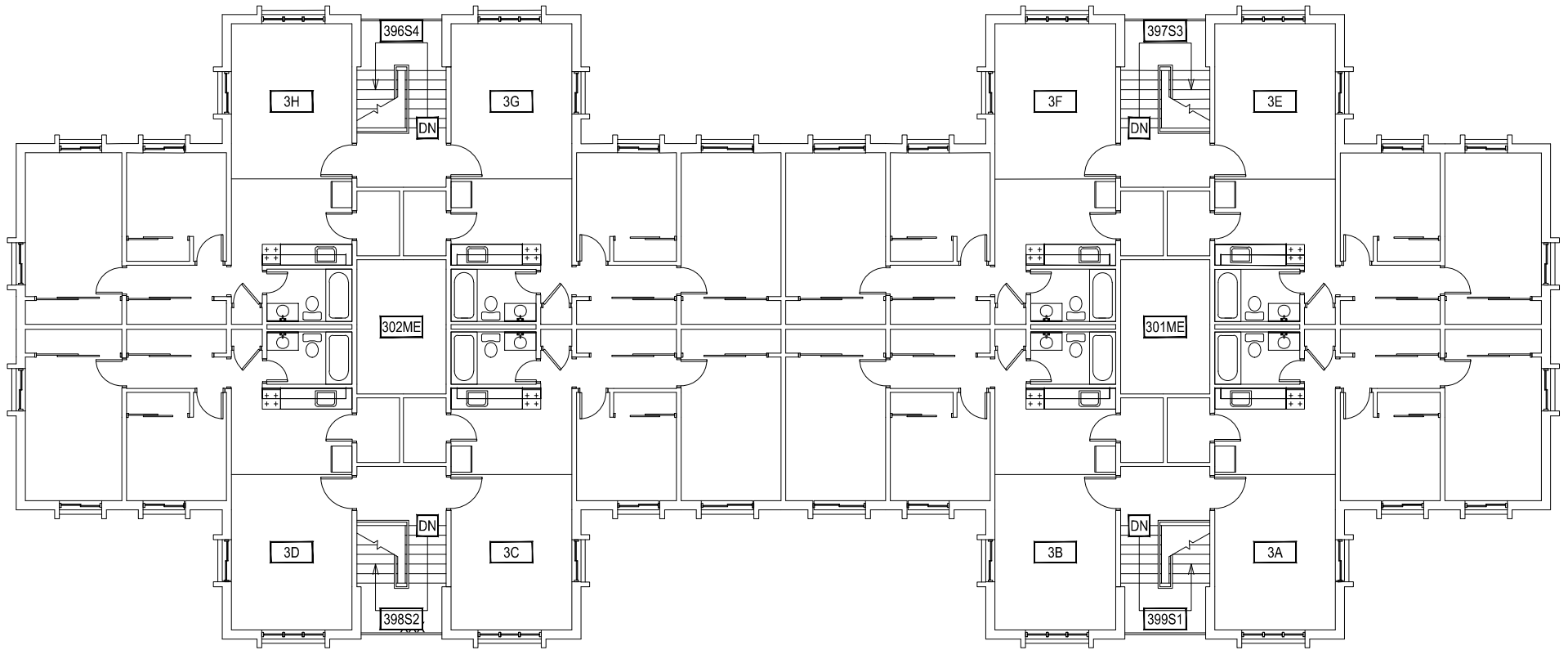
M MONTANA
STATE UNIVERSITY
FACILITIES PLANNING,
DESIGN & CONSTRUCTION
BOZEMAN, MONTANA
PHONE: 406.994.4131 FAX: 406.994.6572

INDEX #
39
BUILDING #
528103



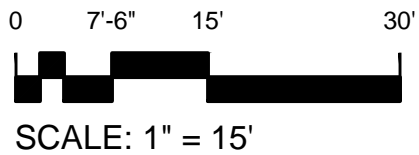
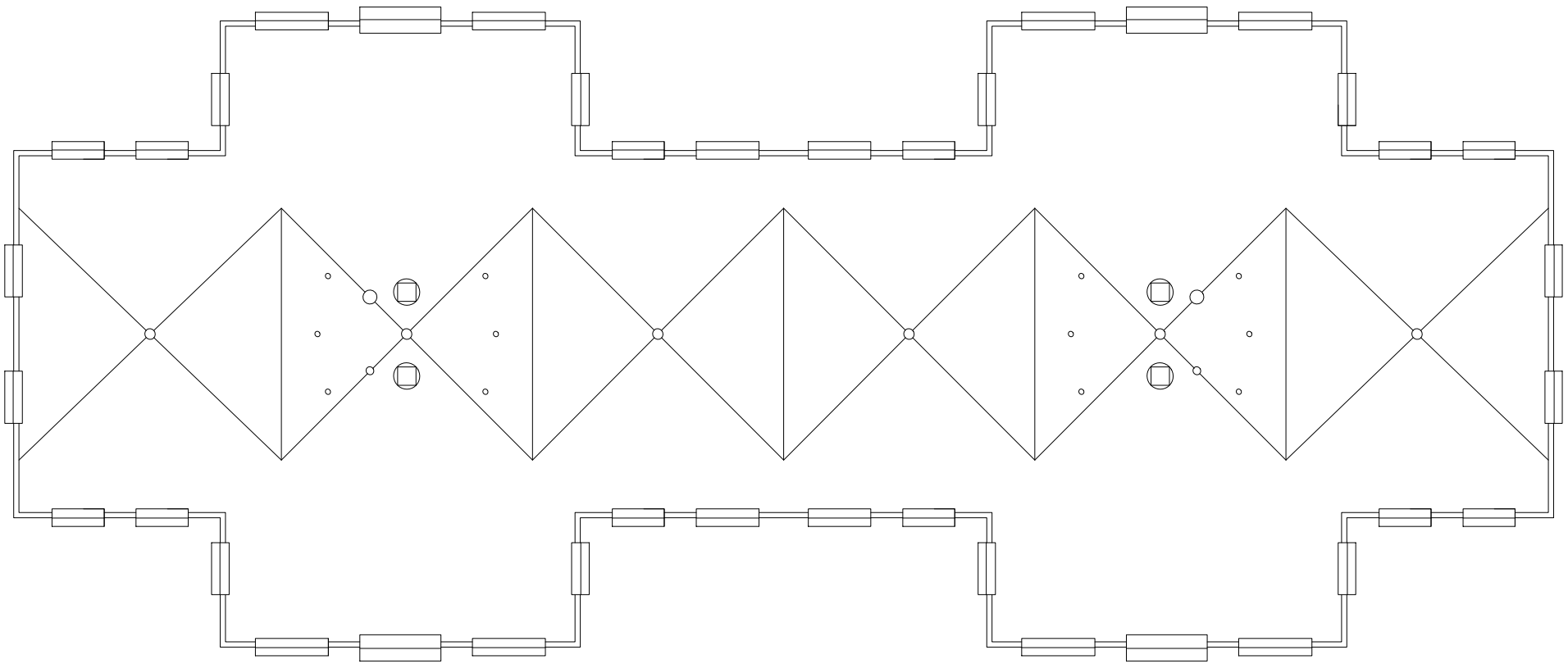
1 SECOND LEVEL
GRANT CHMBERLAIN APARTMENTS


 MONTANA STATE UNIVERSITY FACILITIES PLANNING, DESIGN & CONSTRUCTION BOZEMAN, MONTANA PHONE: 406.994.4131 FAX: 406.994.6572	INDEX # 39
	BUILDING # 528103



1 THIRD LEVEL
GRANT CHMBERLAIN APARTMENTS

 MONTANA STATE UNIVERSITY FACILITIES PLANNING, DESIGN & CONSTRUCTION BOZEMAN, MONTANA PHONE: 406.994.4131 FAX: 406.994.6572	INDEX # 39
	BUILDING # 528103



 MONTANA STATE UNIVERSITY FACILITIES PLANNING, DESIGN & CONSTRUCTION BOZEMAN, MONTANA PHONE: 406.994.4131 FAX: 406.994.6572	INDEX # 39
	BUILDING # 528103