
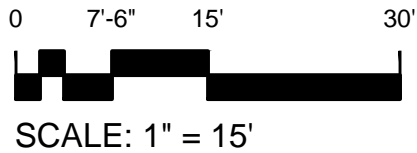
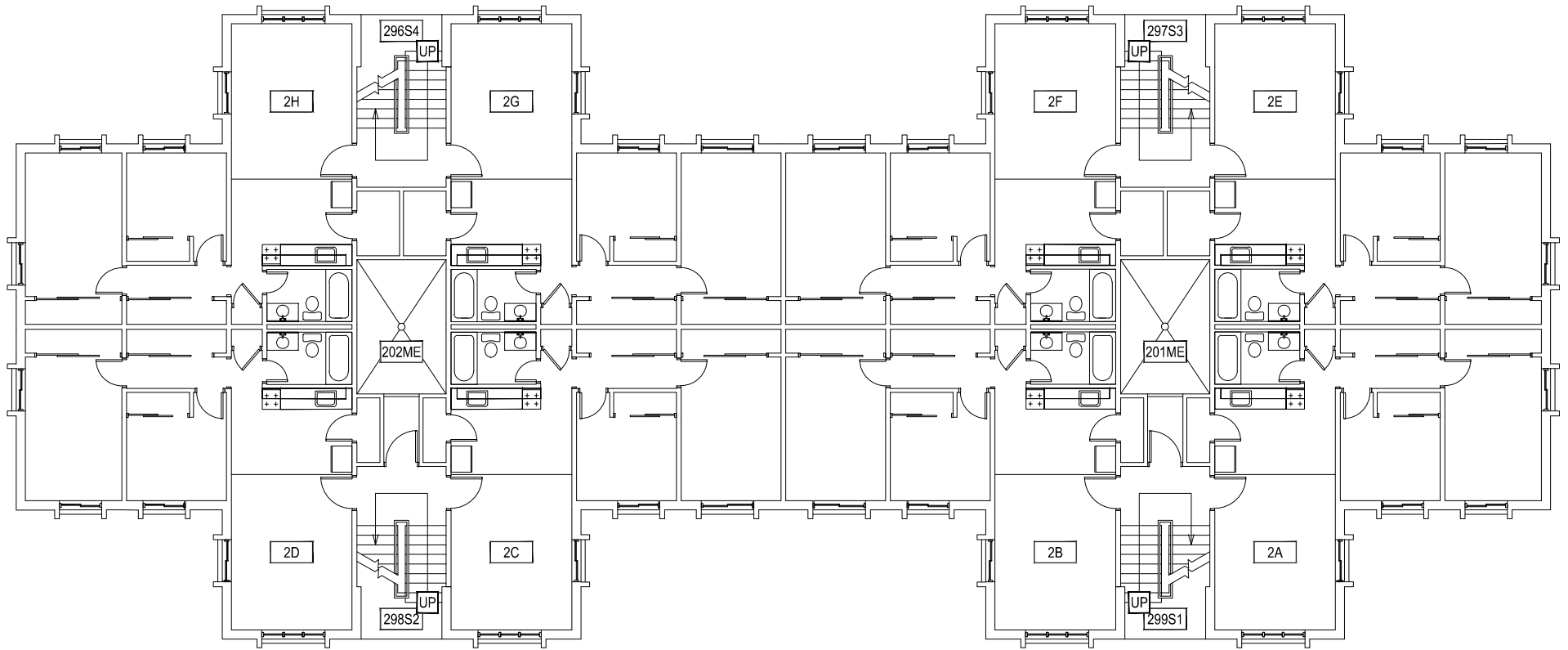



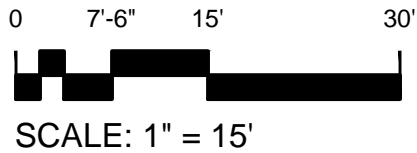
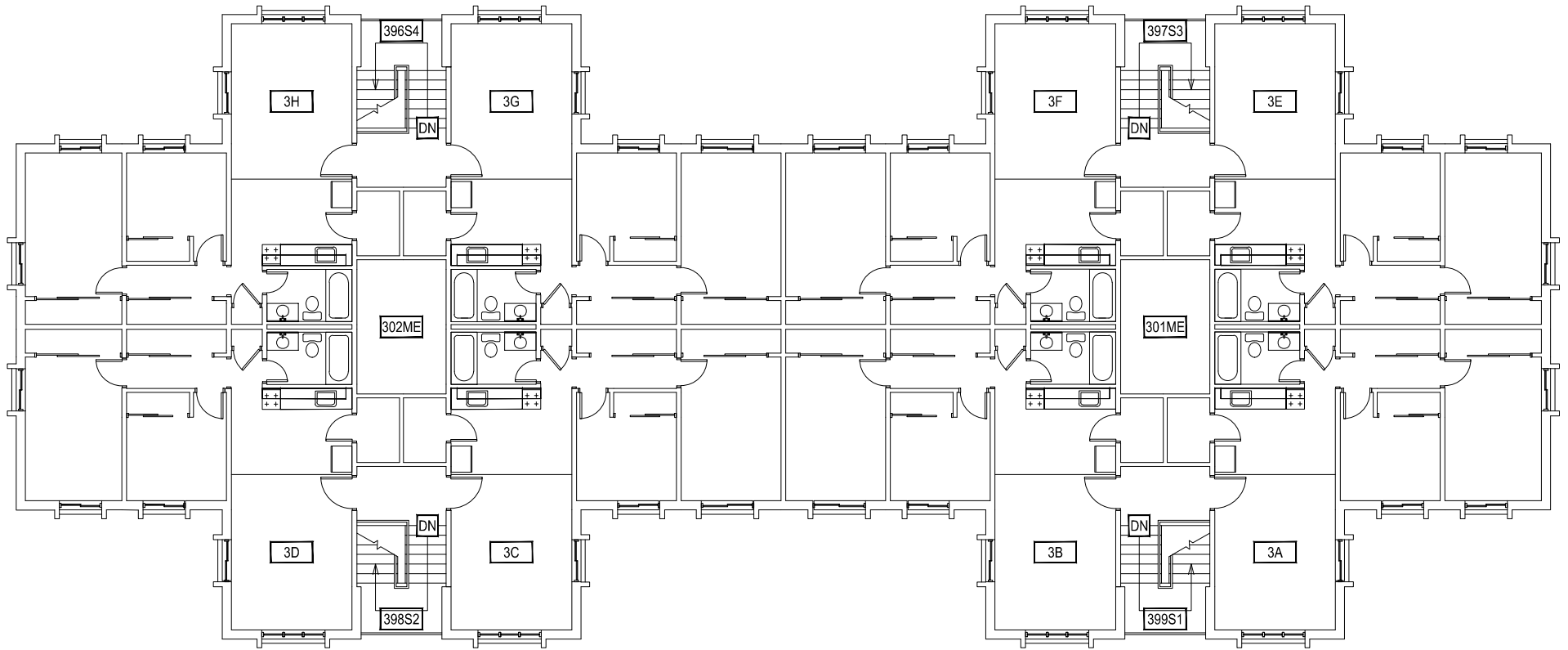
1 FIRST LEVEL  
GRANT CHMBERLAIN APARTMENTS

 <b>MONTANA STATE UNIVERSITY</b> FACILITIES PLANNING, DESIGN & CONSTRUCTION BOZEMAN, MONTANA PHONE: 406.994.4131 FAX: 406.994.6572	INDEX # <b>39</b>
	BUILDING # <b>528102</b>




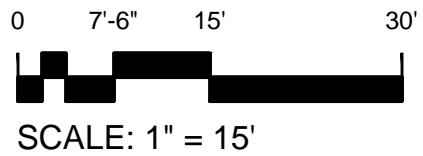
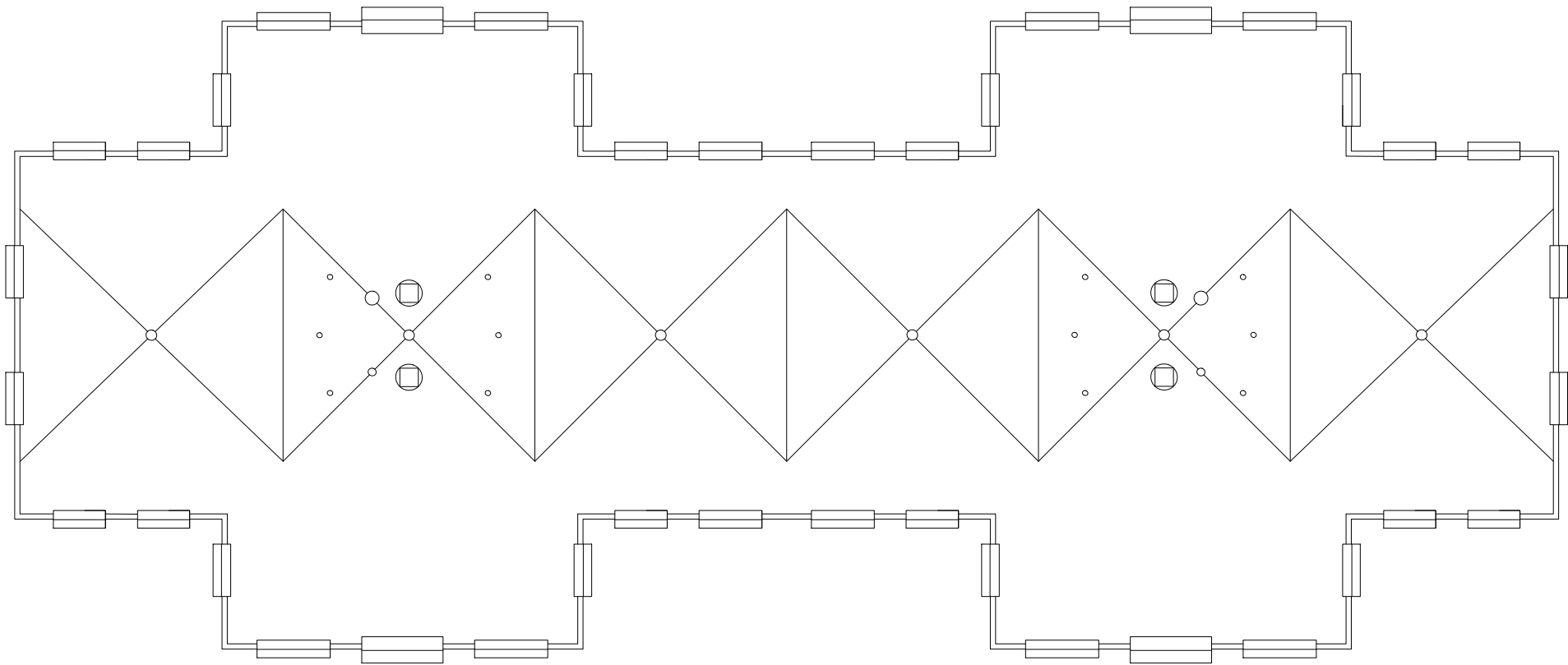
1 SECOND LEVEL  
GRANT CHMBERLAIN APARTMENTS


 <b>MONTANA STATE UNIVERSITY</b> FACILITIES PLANNING, DESIGN & CONSTRUCTION BOZEMAN, MONTANA PHONE: 406.994.4131 FAX: 406.994.6572	INDEX #
	<b>39</b>
	BUILDING #
	<b>528102</b>



1 THIRD LEVEL  
GRANT CHMBERLAIN APARTMENTS

 <b>MONTANA STATE UNIVERSITY</b> FACILITIES PLANNING, DESIGN & CONSTRUCTION BOZEMAN, MONTANA PHONE: 406.994.4131 FAX: 406.994.6572	INDEX # <b>39</b>
	BUILDING # <b>528102</b>



 <b>MONTANA STATE UNIVERSITY</b> FACILITIES PLANNING, DESIGN & CONSTRUCTION BOZEMAN, MONTANA PHONE: 406.994.4131 FAX: 406.994.6572	INDEX # <b>39</b>
	BUILDING # <b>528102</b>