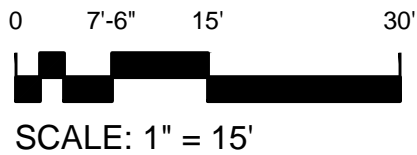
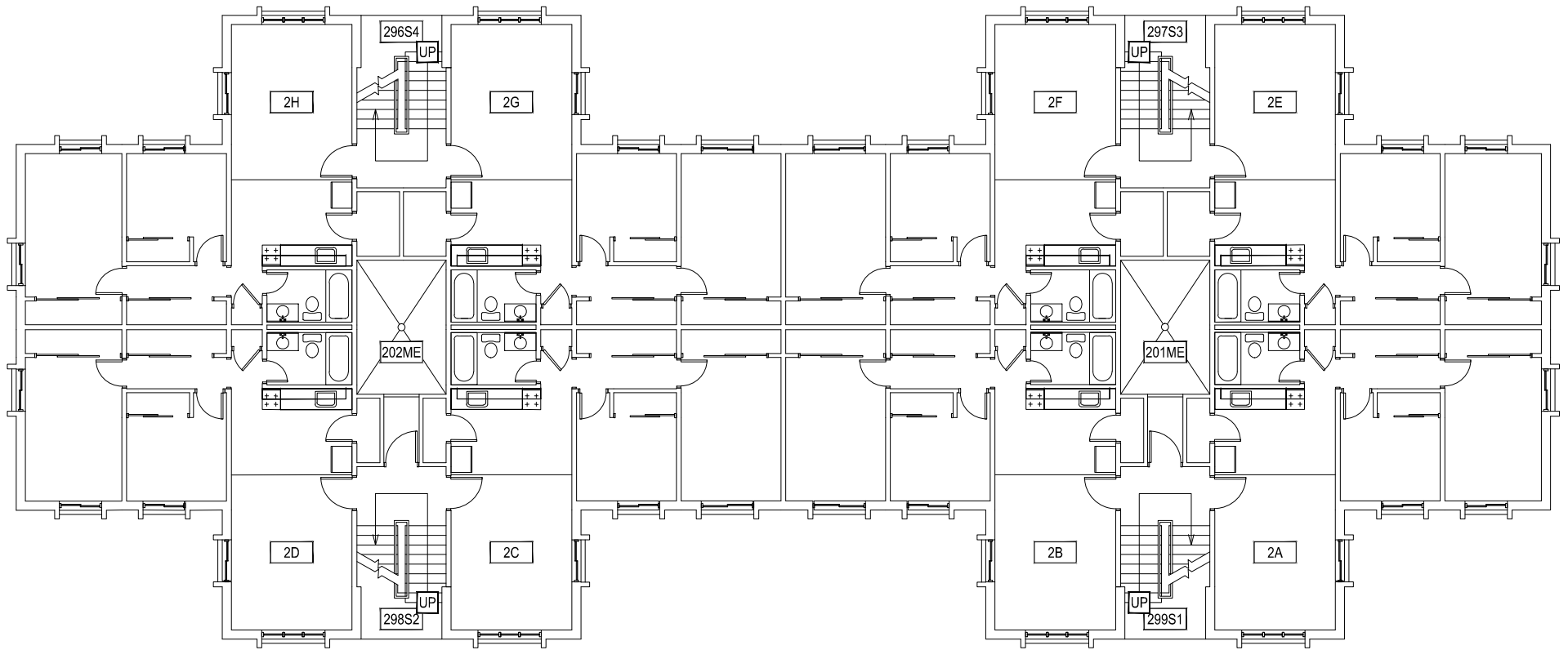


1 FIRST LEVEL  
GRANT CHMBERLAIN APARTMENTS

**M** MONTANA  
STATE UNIVERSITY  
FACILITIES PLANNING,  
DESIGN & CONSTRUCTION  
BOZEMAN, MONTANA  
PHONE: 406.994.4131 FAX: 406.994.6572

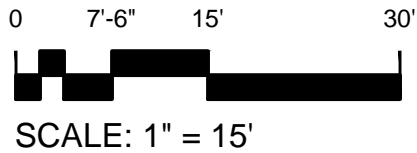
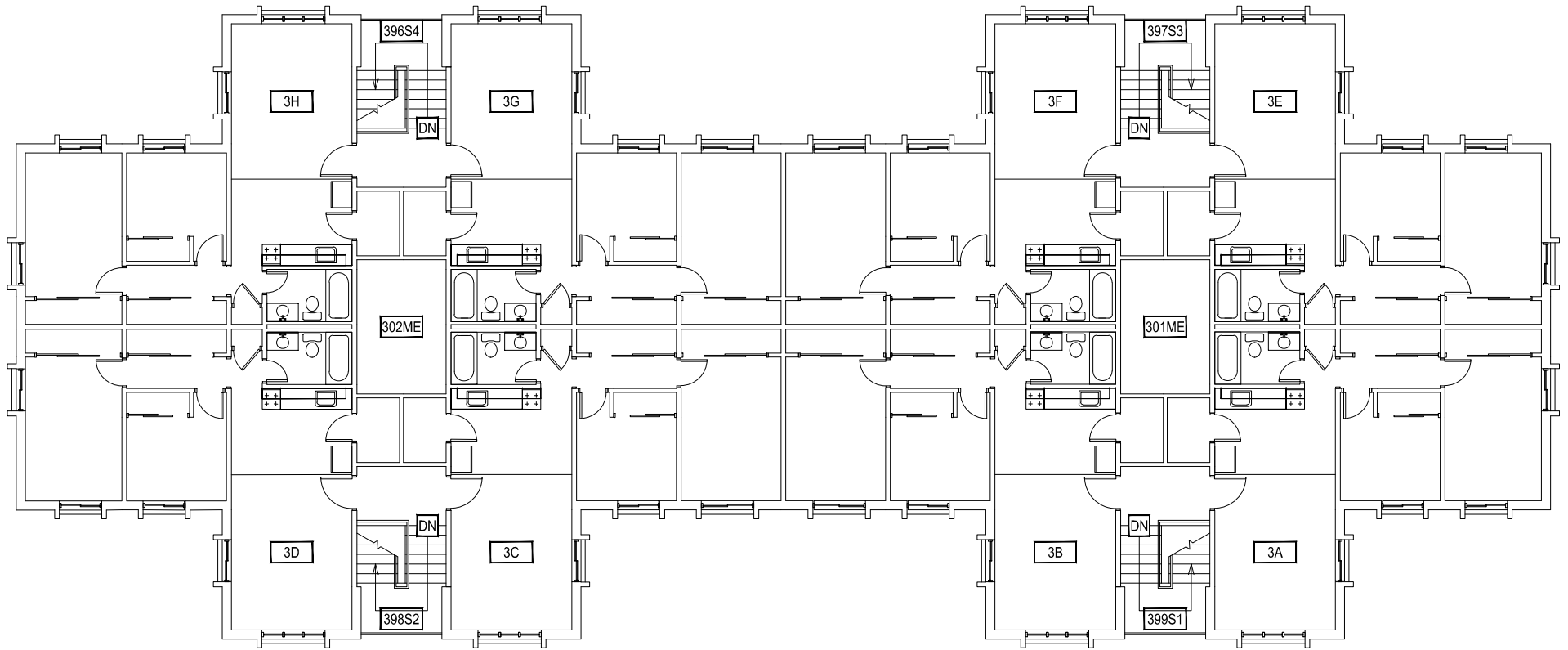
INDEX #  
**39**  
BUILDING #  
**528101**



1 SECOND LEVEL  
GRANT CHMBERLAIN APARTMENTS

**M** MONTANA  
STATE UNIVERSITY  
FACILITIES PLANNING,  
DESIGN & CONSTRUCTION  
BOZEMAN, MONTANA  
PHONE: 406.994.4131 FAX: 406.994.6572

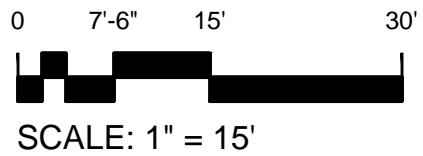
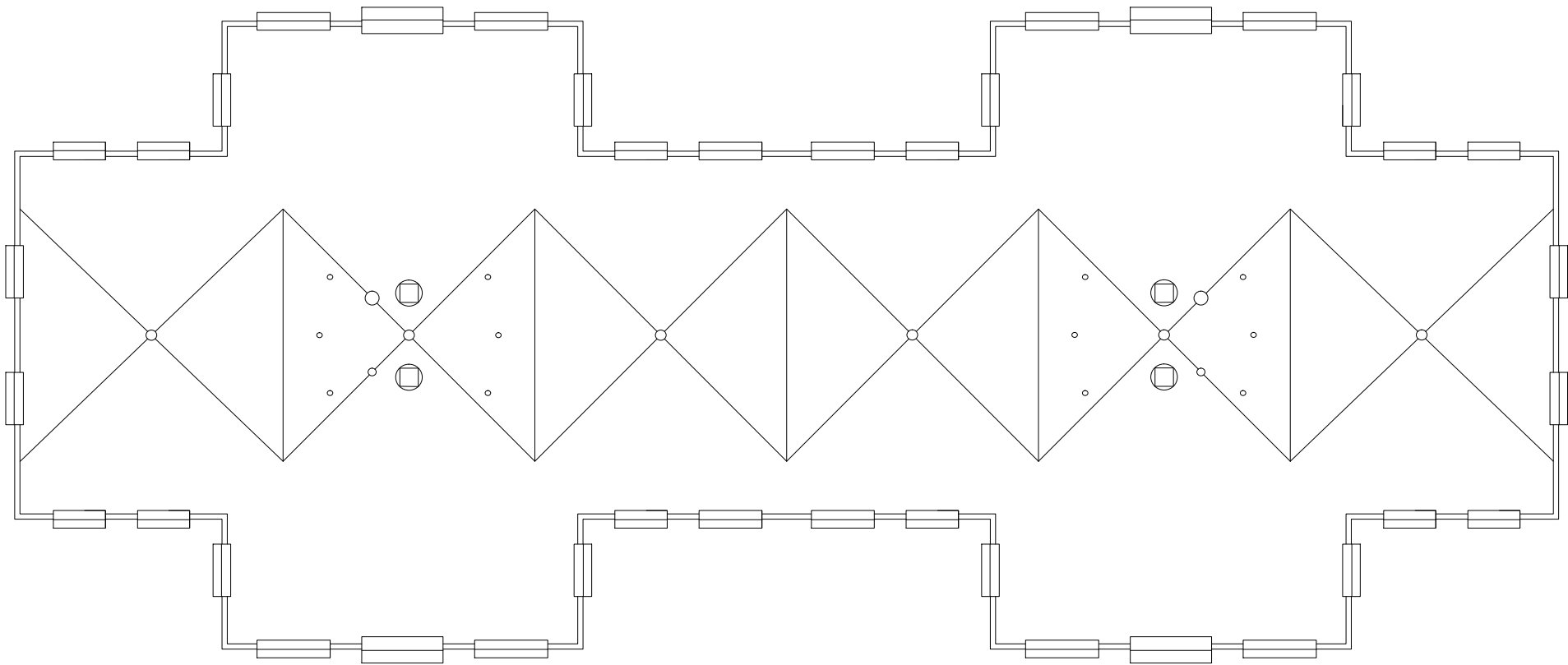
INDEX #  
**39**  
BUILDING #  
**528101**



1 THIRD LEVEL  
GRANT CHMBERLAIN APARTMENTS

**M** MONTANA  
STATE UNIVERSITY  
FACILITIES PLANNING,  
DESIGN & CONSTRUCTION  
BOZEMAN, MONTANA  
PHONE: 406.994.4131 FAX: 406.994.6572

INDEX #  
**39**  
BUILDING #  
**528101**



1 ROOF LEVEL  
GRANT CHMBERLAIN APARTMENTS

**M** MONTANA  
STATE UNIVERSITY  
FACILITIES PLANNING,  
DESIGN & CONSTRUCTION  
BOZEMAN, MONTANA  
PHONE: 406.994.4131 FAX: 406.994.6572

INDEX #  
**39**  
BUILDING #  
**528101**