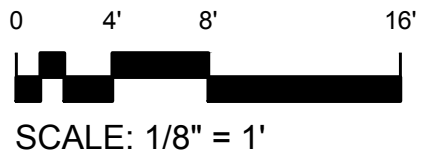


Dec 20, 2016 - 3:57pm - 527_AB.dwg
 H:\1106 S 6th Avenue\Building Plan - Book Copy\



1

BASEMENT LEVEL

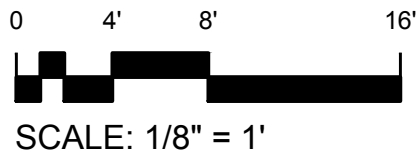
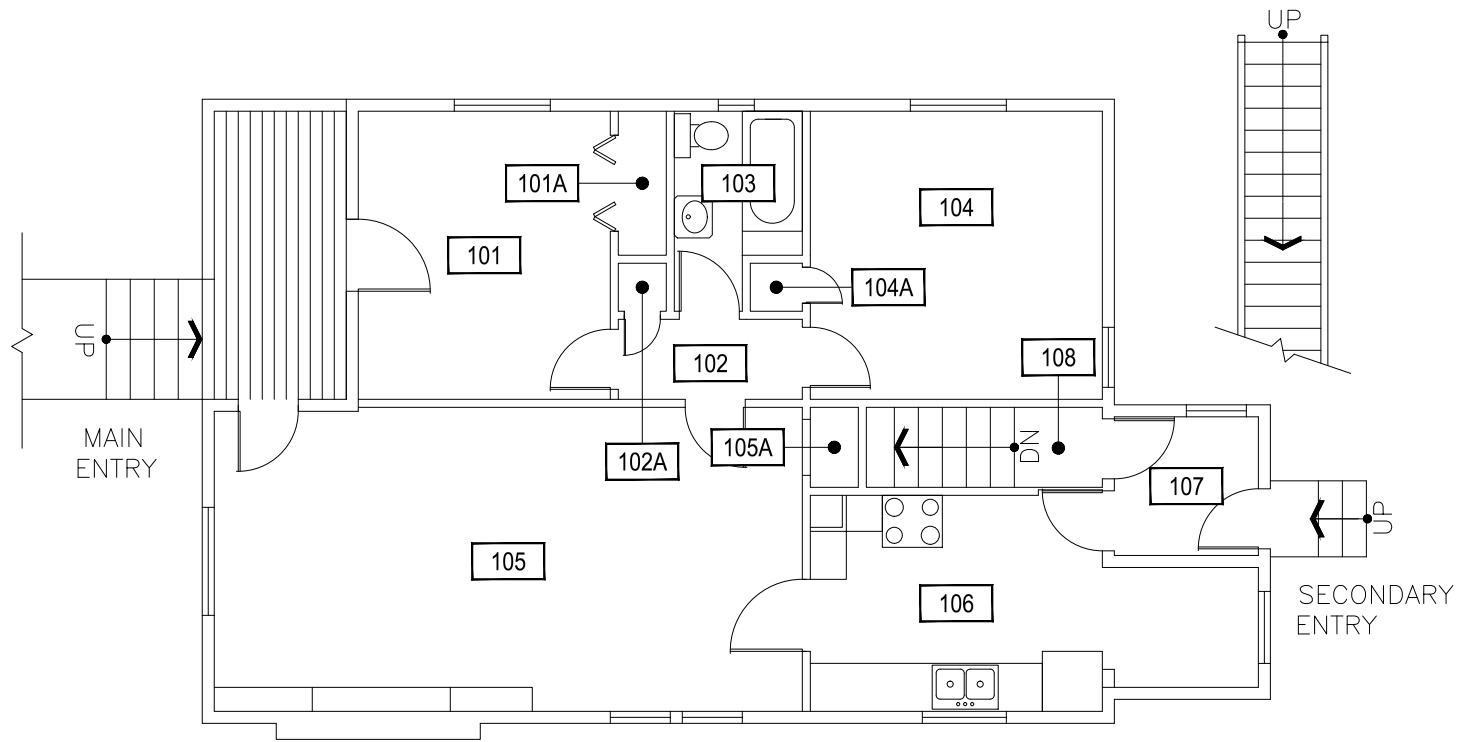
1106 S 6TH AVENUE

MONTANA STATE UNIVERSITY

CAMPUS PLANNING,
 DESIGN & CONSTRUCTION
 BOZEMAN, MONTANA
 PHONE: 406.994.5413 FAX: 406.994.5665

| | |
|------------|------------|
| INDEX # | 75 |
| BUILDING # | 527 |

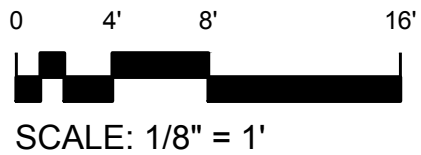
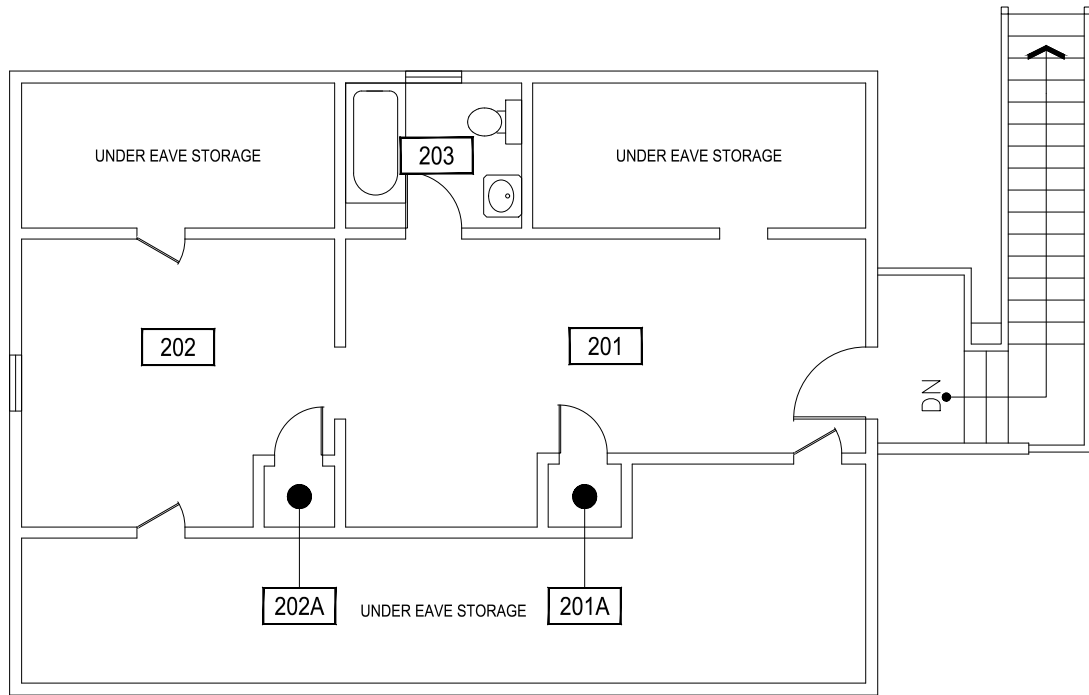
Dec 20, 2016 - 3:57pm - s27_A1.dwg
H:\1106 S 6th Avenue\Building Plan - Book Copy\



M MONTANA STATE UNIVERSITY
CAMPUS PLANNING,
DESIGN & CONSTRUCTION
BOZEMAN, MONTANA
PHONE: 406.994.5413 FAX: 406.994.5665

| | |
|------------|-----|
| INDEX # | 75 |
| BUILDING # | 527 |

Dec 20, 2016 - 3:57 pm - s27_A2.dwg
H:\1106 S 6th Avenue\Building Plan - Book Copy\



1 SECOND LEVEL
1106 S 6TH AVENUE

M MONTANA STATE UNIVERSITY
CAMPUS PLANNING,
DESIGN & CONSTRUCTION
BOZEMAN, MONTANA
PHONE: 406.994.5413 FAX: 406.994.5665

INDEX #
75
BUILDING #
527