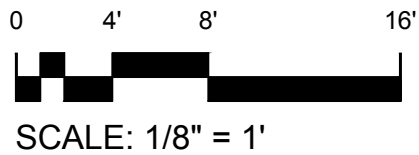


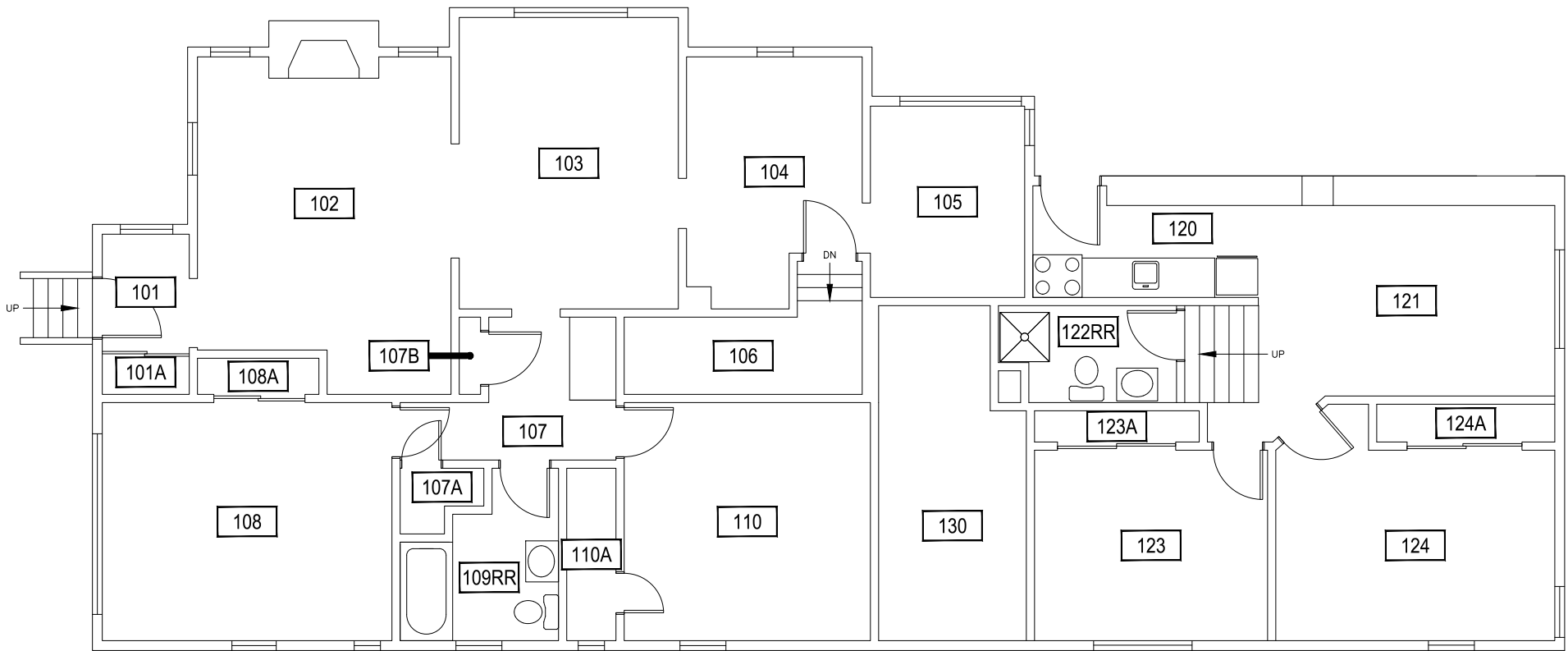
Dec 20, 2016 - 3:55pm - 526_AB.dwg
 H:\1102 S 6th Avenue\Building Plan - Book Copy\



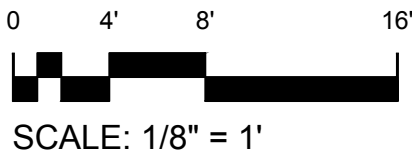
1
BASEMENT LEVEL

1102 S 6TH AVENUE

<p>MONTANA STATE UNIVERSITY CAMPUS PLANNING, DESIGN & CONSTRUCTION BOZEMAN, MONTANA PHONE: 406.994.5413 FAX: 406.994.5665</p>	INDEX #
	69
	BUILDING #
	526



Dec 20, 2016 - 3:55pm - 526_A1.dwg
HE\1102_S 6th Avenue\Building Plan - Book Copy\



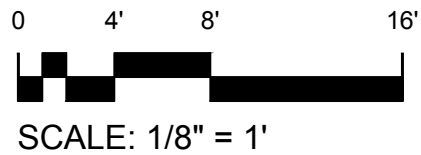
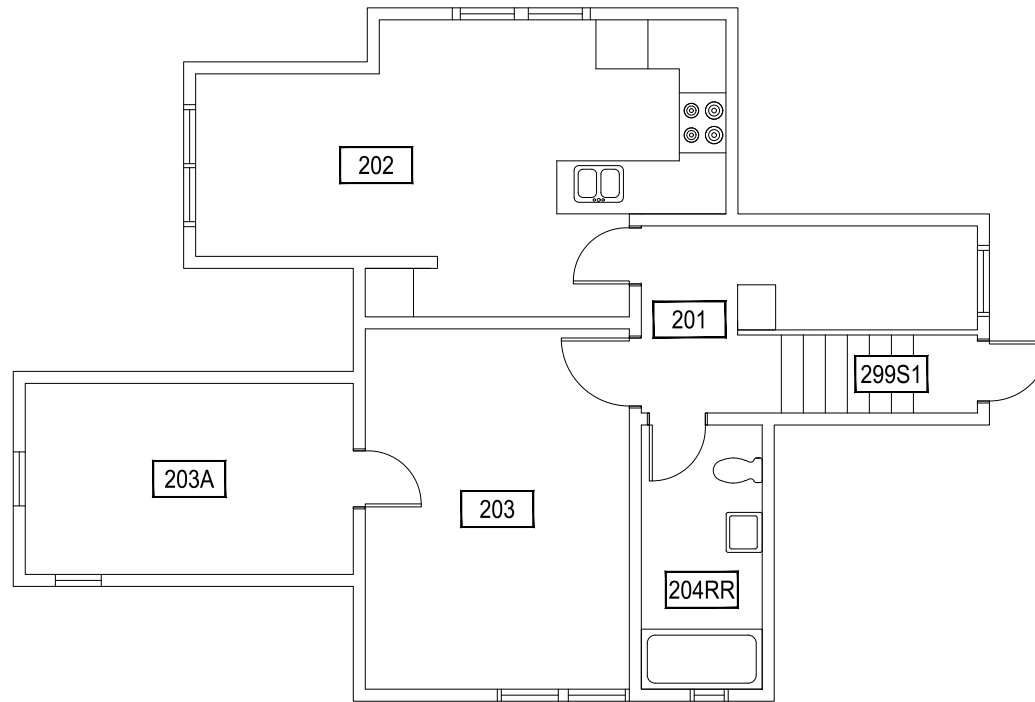
1

FIRST LEVEL

1102 S 6TH AVENUE

<p>MONTANA STATE UNIVERSITY CAMPUS PLANNING, DESIGN & CONSTRUCTION BOZEMAN, MONTANA PHONE: 406.994.5413 FAX: 406.994.5665</p>	INDEX #	69
	BUILDING #	526

Dec 20, 2016 - 3:55pm - 526_A2.dwg
C:\Users\gary.gramer\appdata\local\temp\AcPublish_14836



M MONTANA
STATE UNIVERSITY
CAMPUS PLANNING,
DESIGN & CONSTRUCTION
BOZEMAN, MONTANA
PHONE: 406.994.5413 FAX: 406.994.5665

INDEX #	69
BUILDING #	526