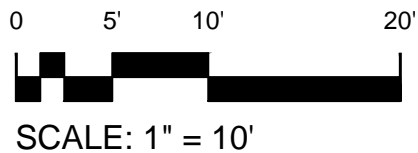
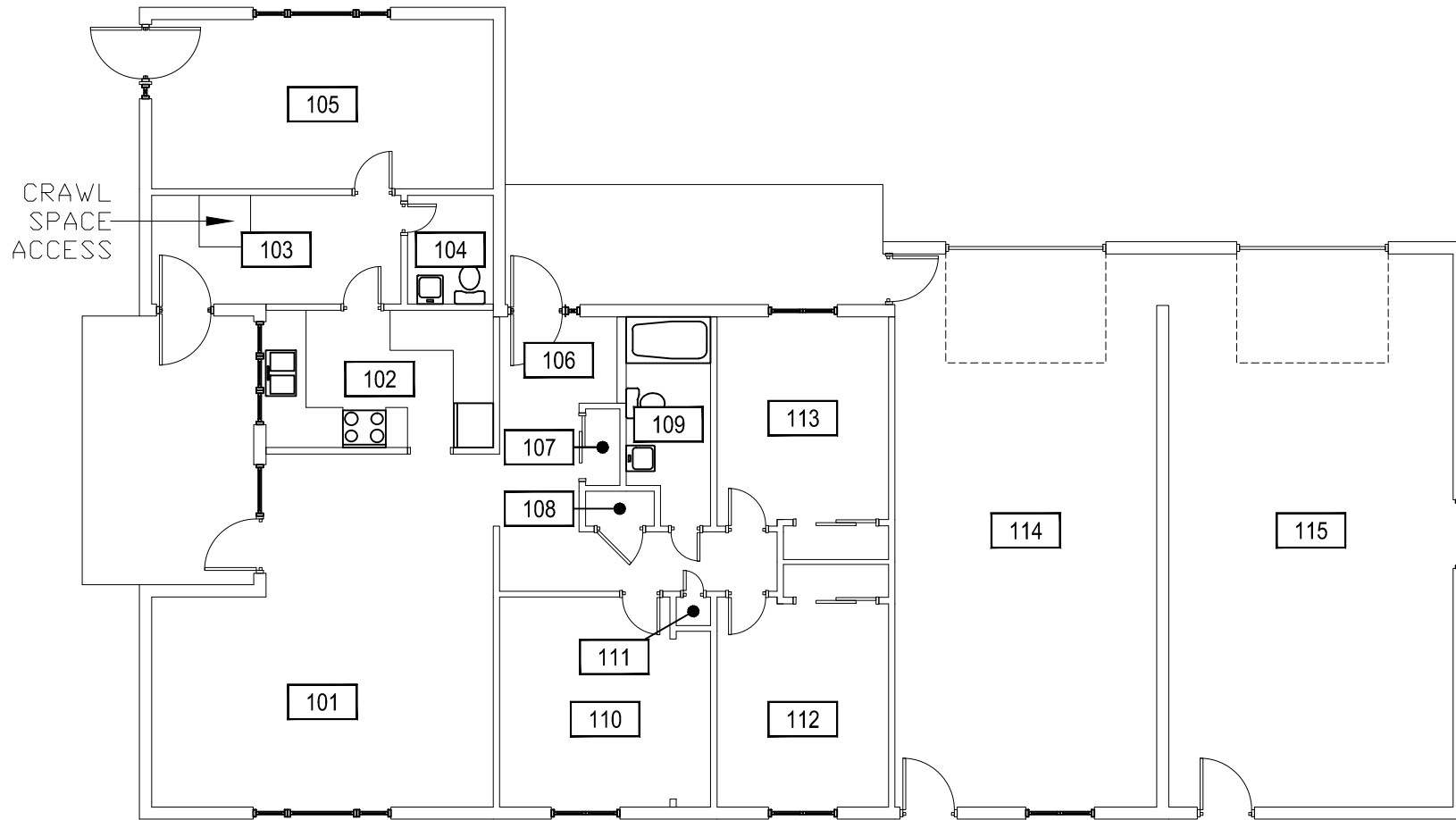


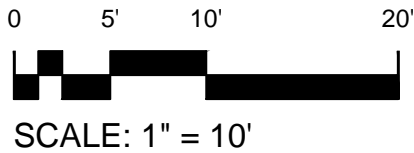
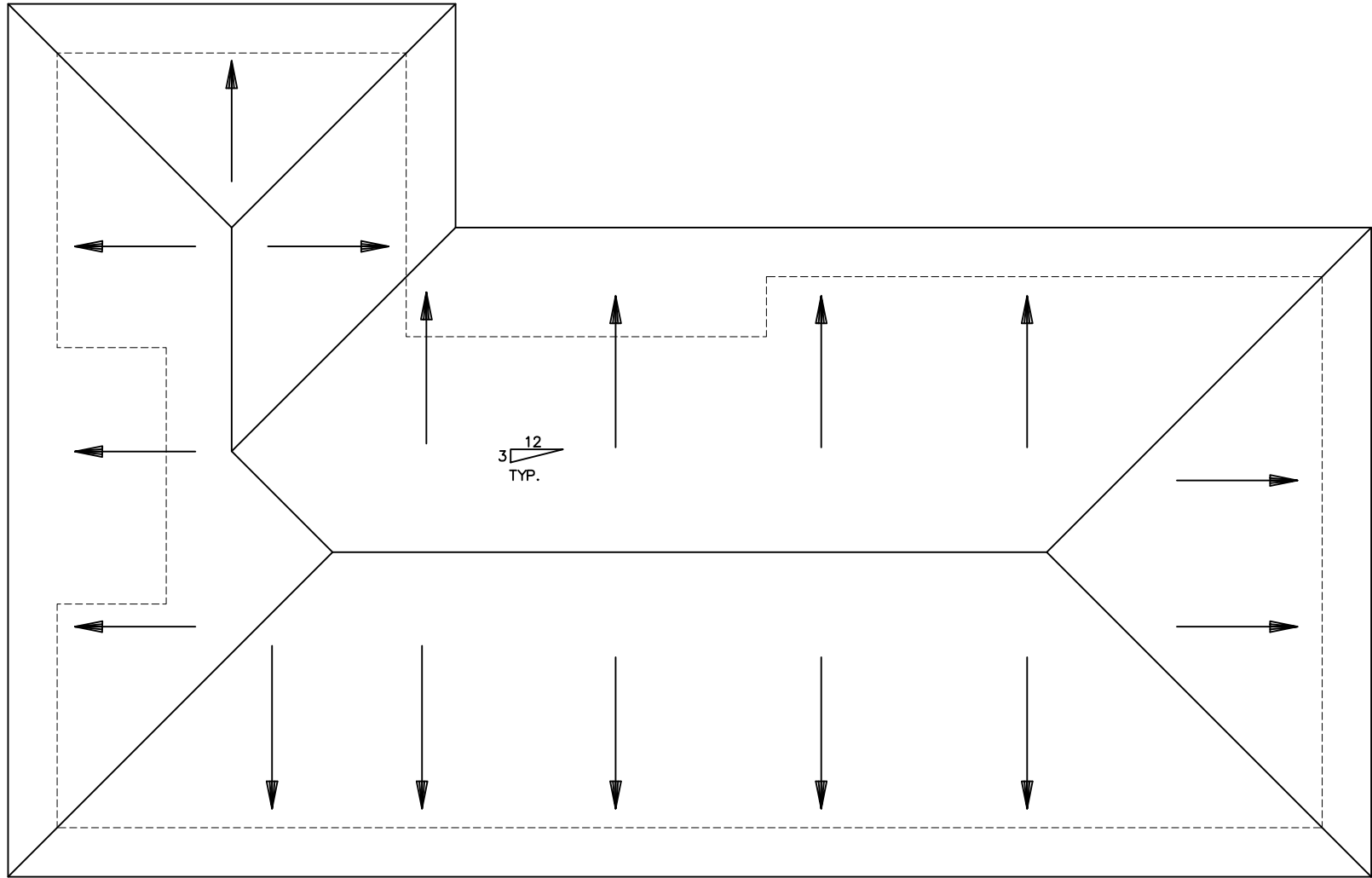
O:\04_2012 - 7:52am - 524_A1.dwg
H:\Family Housing\Family Housing Office Building\Building Plan - Book Copy\



1 **FIRST LEVEL**
FAMILY HOUSING OFFICE BUILDING

M MONTANA
STATE UNIVERSITY
FACILITIES PLANNING,
DESIGN & CONSTRUCTION
BOZEMAN, MONTANA
PHONE: 406.994.4131 FAX: 406.994.6572

INDEX #
24
BUILDING #
524



M MONTANA
STATE UNIVERSITY
FACILITIES PLANNING,
DESIGN & CONSTRUCTION
BOZEMAN, MONTANA
PHONE: 406.994.4131 FAX: 406.994.6572

INDEX #	24
BUILDING #	524