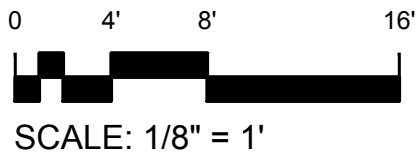
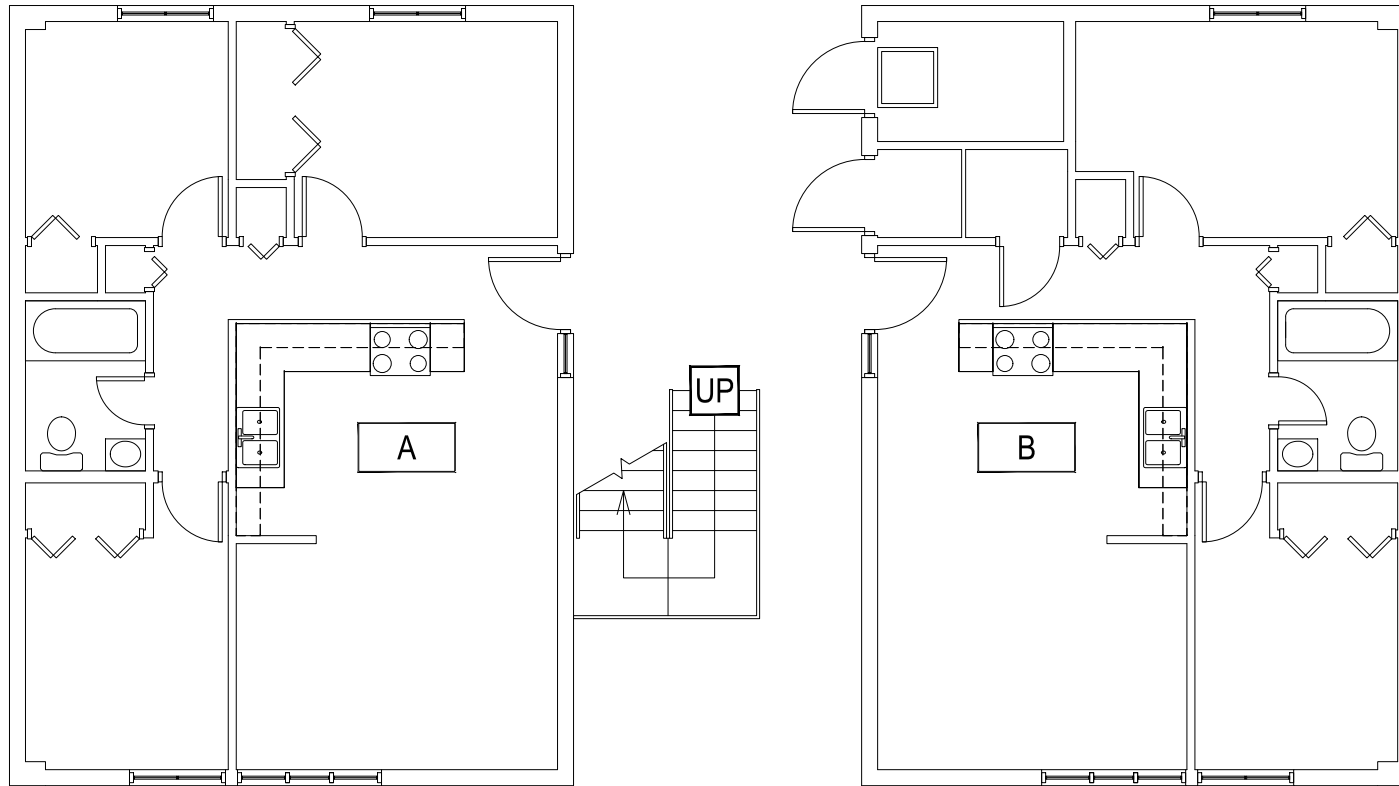


M MONTANA
STATE UNIVERSITY
CAMPUS PLANNING,
DESIGN & CONSTRUCTION
BOZEMAN, MONTANA
PHONE: 406.994.5413 FAX: 406.994.5665

| | |
|------------|---------------|
| INDEX # | 39 |
| BUILDING # | 523109 |

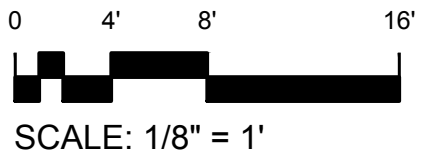
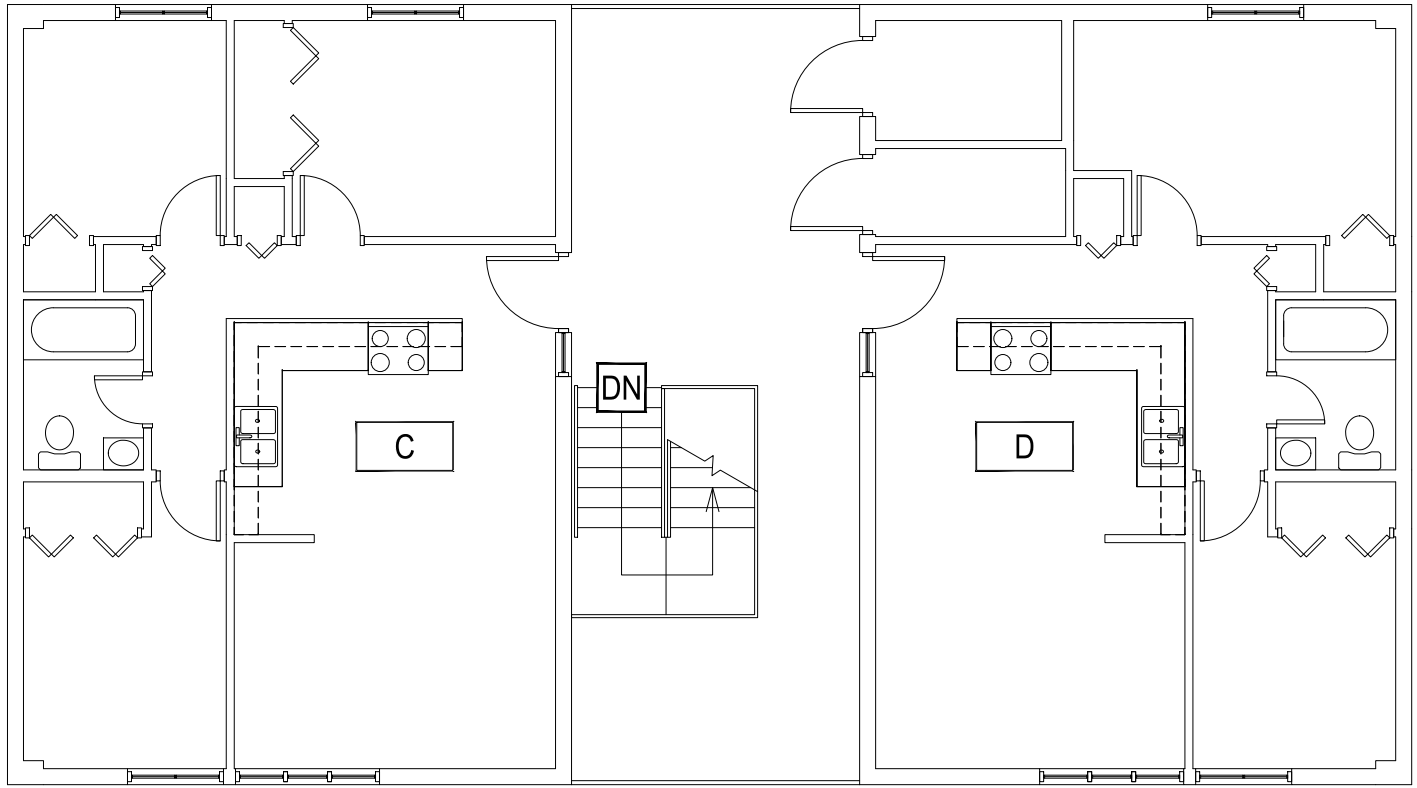


1 FIRST LEVEL
EAST JULIA MARTIN APARTMENTS

M MONTANA
STATE UNIVERSITY
CAMPUS PLANNING,
DESIGN & CONSTRUCTION
BOZEMAN, MONTANA
PHONE: 406.994.5413 FAX: 406.994.5665

INDEX #
39
BUILDING #
523109

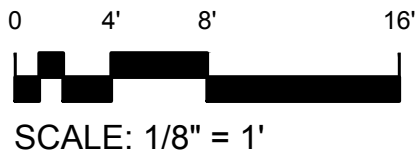
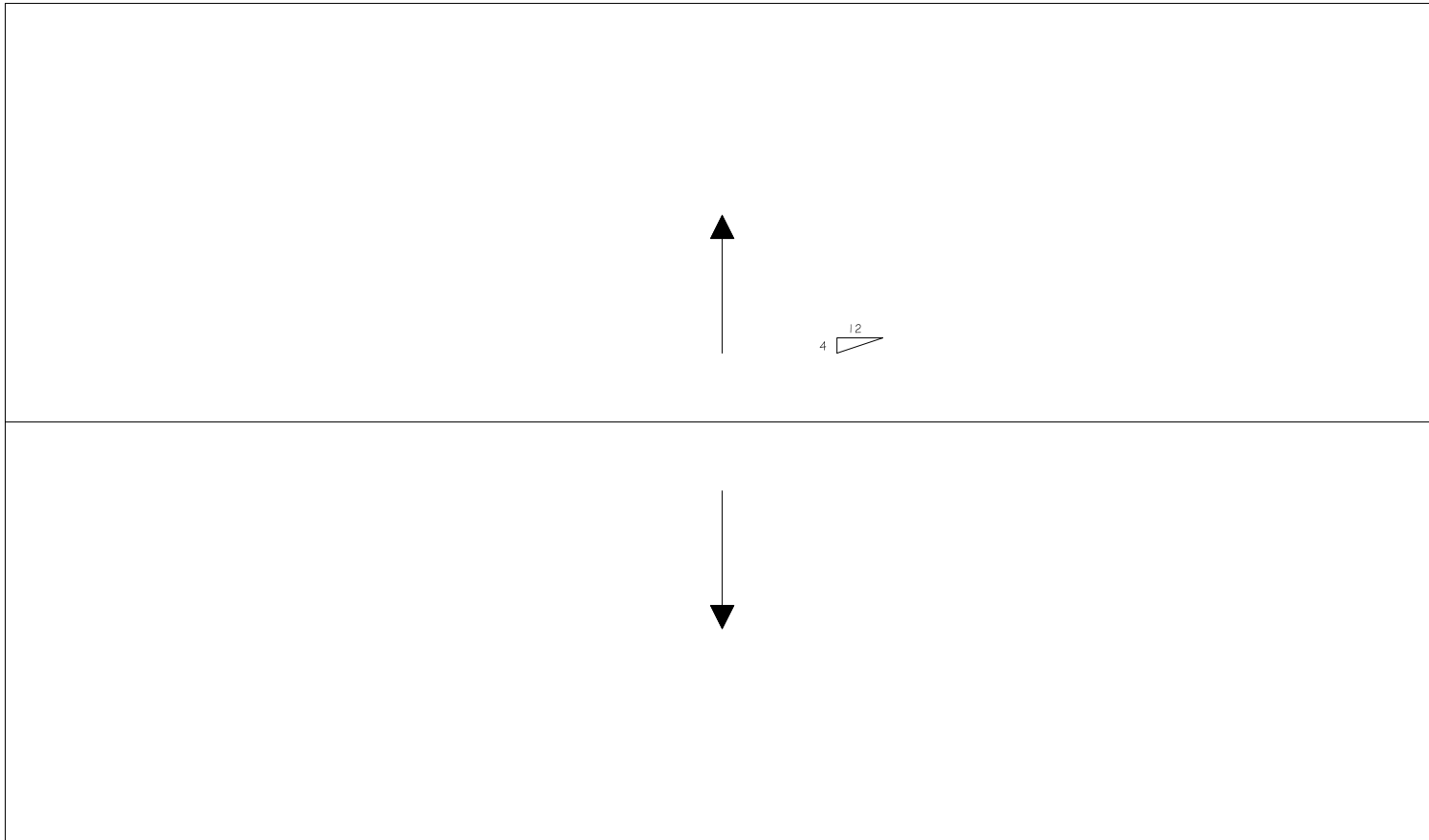
Dec 20, 2016 - 1:44pm - 523109_A2.dwg
H:\Family Housing\East Julia Martin Apartments\Building Plan - Book Copy\



1 SECOND LEVEL
EAST JULIA MARTIN APARTMENTS

M MONTANA STATE UNIVERSITY
CAMPUS PLANNING,
DESIGN & CONSTRUCTION
BOZEMAN, MONTANA
PHONE: 406.994.5413 FAX: 406.994.5665

INDEX #
39
BUILDING #
523109



M MONTANA
STATE UNIVERSITY
CAMPUS PLANNING,
DESIGN & CONSTRUCTION
BOZEMAN, MONTANA
PHONE: 406.994.5413 FAX: 406.994.5665

INDEX #
39
BUILDING #
523109