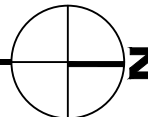
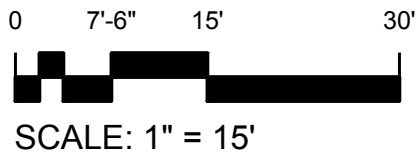
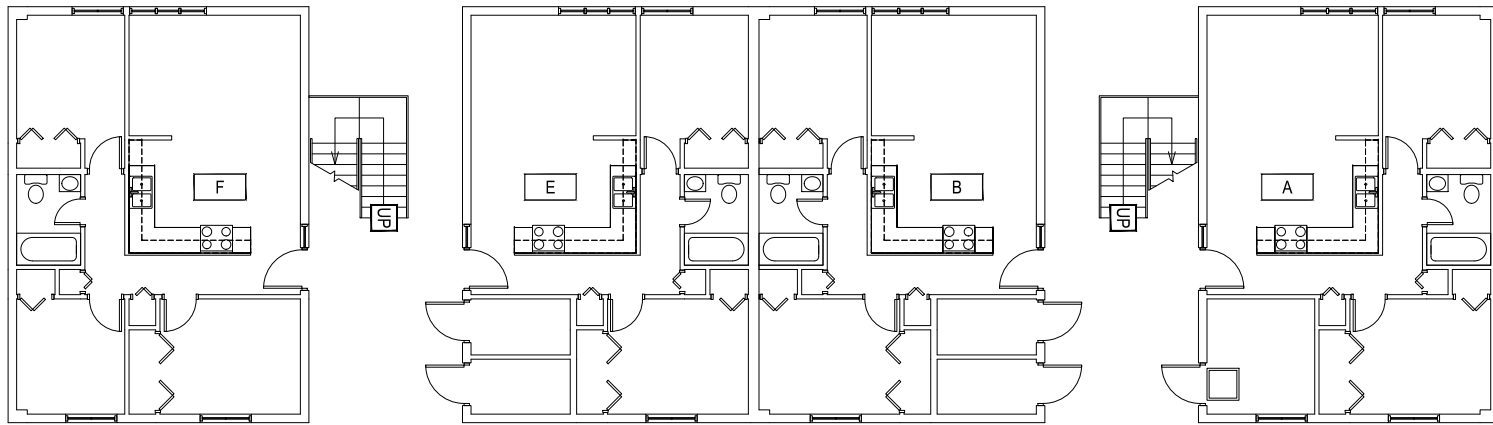


BASEMENT LEVEL
EAST JULIA MARTIN APARTMENTS



M MONTANA
STATE UNIVERSITY
CAMPUS PLANNING,
DESIGN & CONSTRUCTION
BOZEMAN, MONTANA
PHONE: 406.994.5413 FAX: 406.994.5665

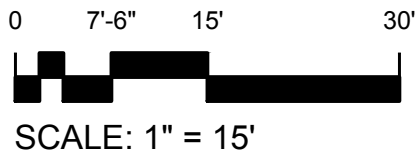
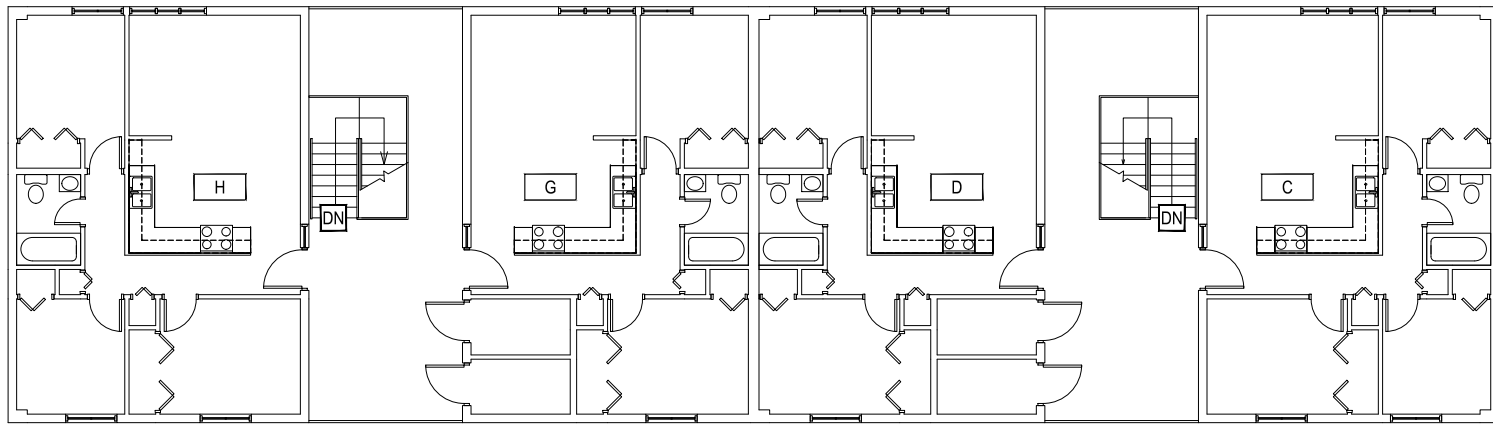
INDEX #	39
BUILDING #	523108



1 FIRST LEVEL
EAST JULIA MARTIN APARTMENTS

M MONTANA
STATE UNIVERSITY
CAMPUS PLANNING,
DESIGN & CONSTRUCTION
BOZEMAN, MONTANA
PHONE: 406.994.5413 FAX: 406.994.5665

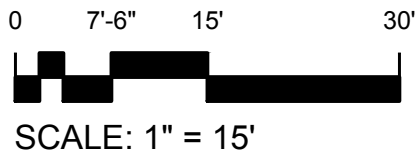
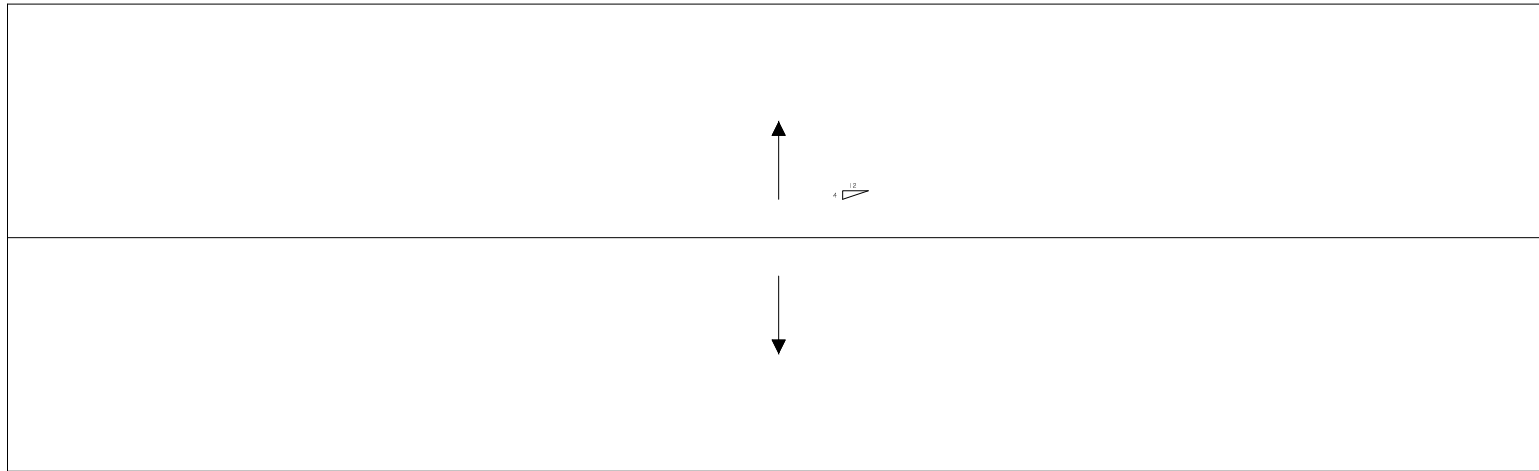
INDEX #
39
BUILDING #
523108



1 SECOND LEVEL
EAST JULIA MARTIN APARTMENTS

M MONTANA
STATE UNIVERSITY
CAMPUS PLANNING,
DESIGN & CONSTRUCTION
BOZEMAN, MONTANA
PHONE: 406.994.5413 FAX: 406.994.5665

INDEX #	39
BUILDING #	523108



M MONTANA
STATE UNIVERSITY
CAMPUS PLANNING,
DESIGN & CONSTRUCTION
BOZEMAN, MONTANA
PHONE: 406.994.5413 FAX: 406.994.5665

INDEX #	39
BUILDING #	523108