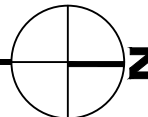
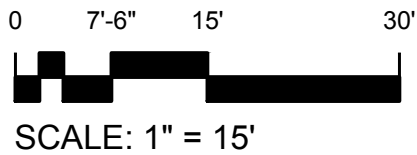
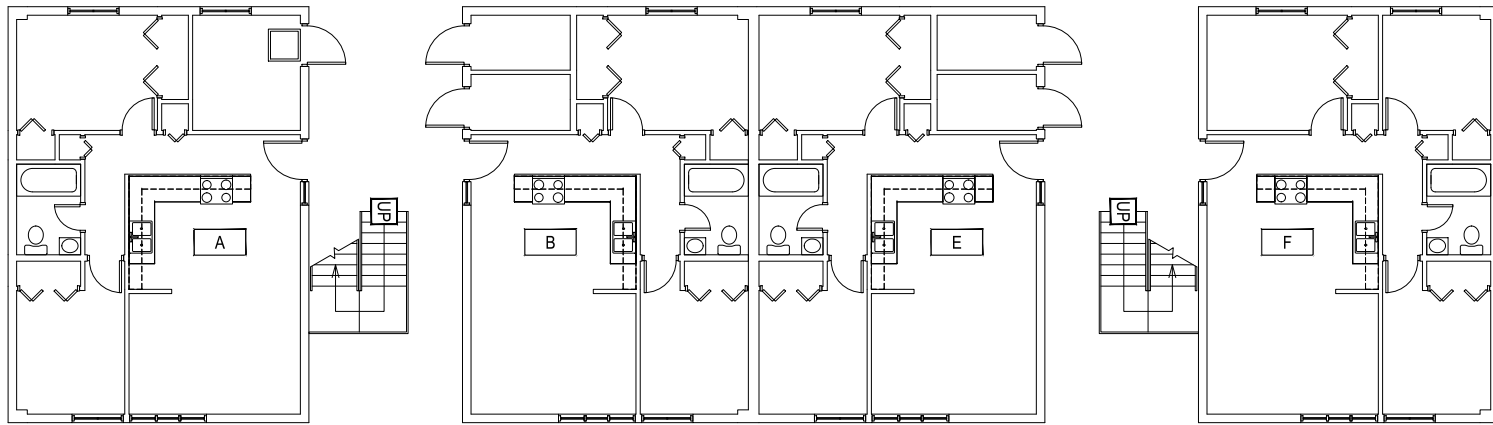


BASEMENT LEVEL
EAST JULIA MARTIN APARTMENTS




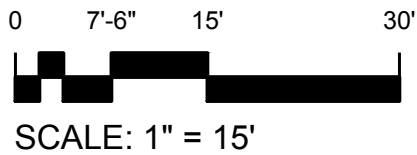
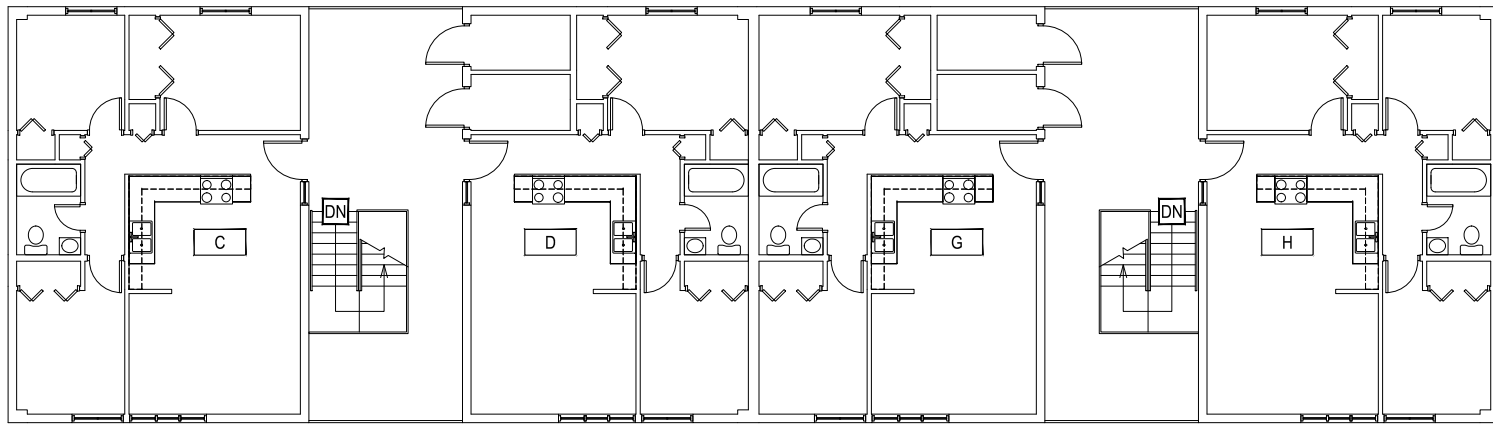
M MONTANA
STATE UNIVERSITY
CAMPUS PLANNING,
DESIGN & CONSTRUCTION
BOZEMAN, MONTANA
PHONE: 406.994.5413 FAX: 406.994.5665

INDEX #	39
BUILDING #	523103



1 FIRST LEVEL
EAST JULIA MARTIN APARTMENTS

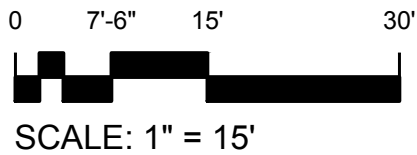
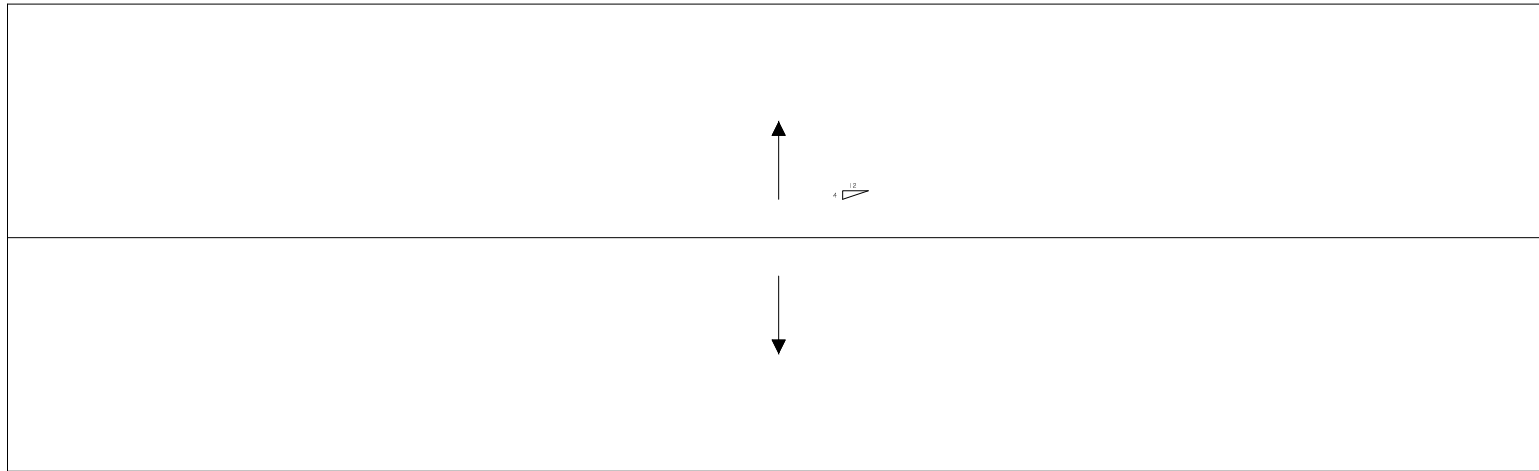
 MONTANA STATE UNIVERSITY CAMPUS PLANNING, DESIGN & CONSTRUCTION BOZEMAN, MONTANA PHONE: 406.994.5413 FAX: 406.994.5665	INDEX # 39
	BUILDING # 523103



1 SECOND LEVEL
EAST JULIA MARTIN APARTMENTS

M MONTANA
STATE UNIVERSITY
CAMPUS PLANNING,
DESIGN & CONSTRUCTION
BOZEMAN, MONTANA
PHONE: 406.994.5413 FAX: 406.994.5665

INDEX #
39
BUILDING #
523103



M MONTANA
STATE UNIVERSITY
CAMPUS PLANNING,
DESIGN & CONSTRUCTION
BOZEMAN, MONTANA
PHONE: 406.994.5413 FAX: 406.994.5665

INDEX #	39
BUILDING #	523103