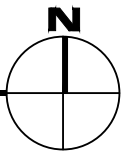
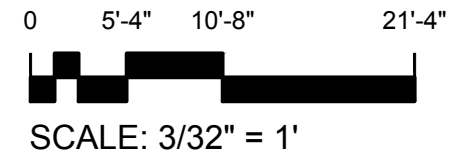
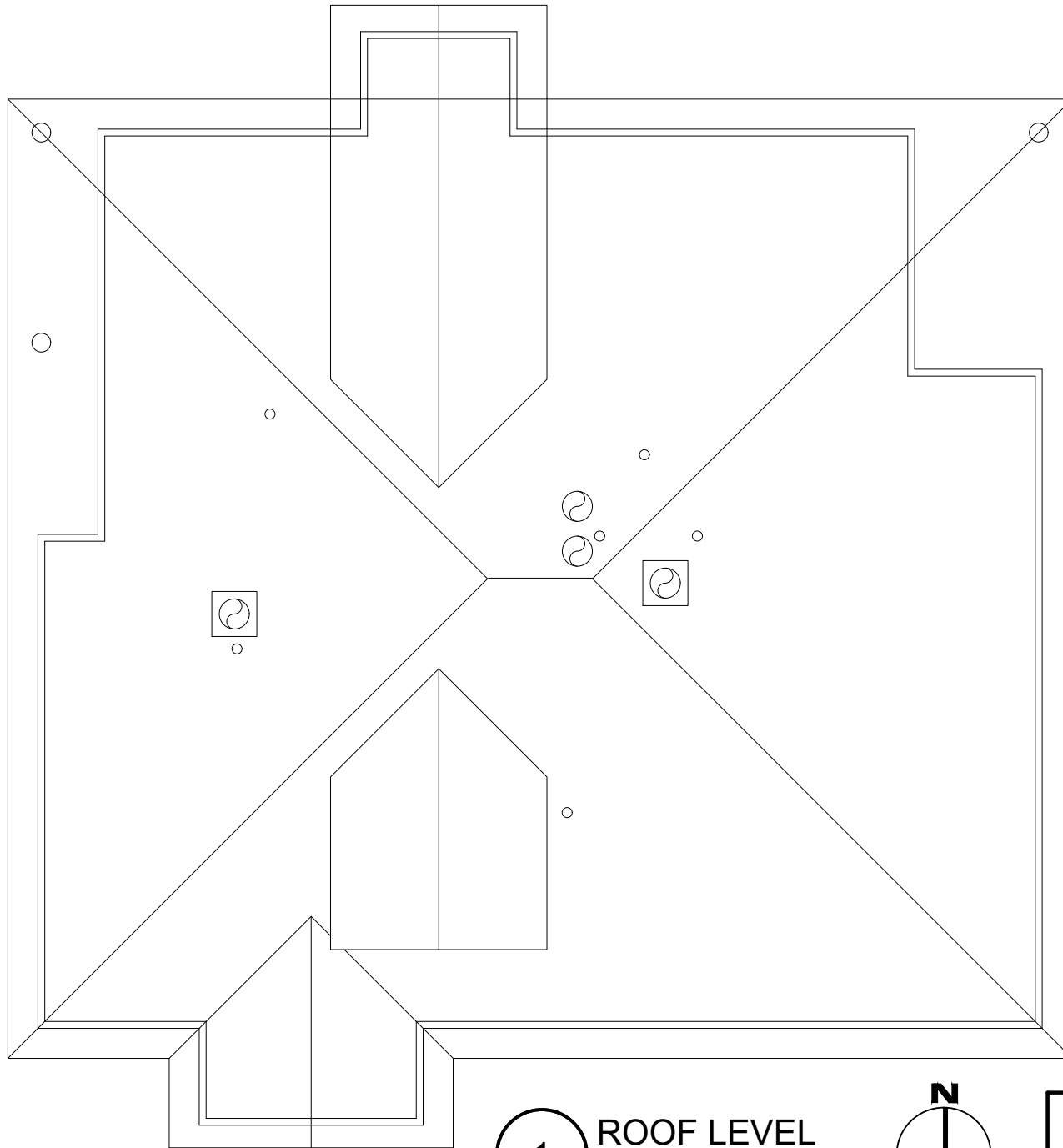


1 FIRST LEVEL  
LOUISE SHUNK DAYCARE & COMMUNITY CENTER

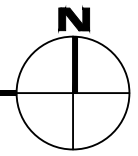


**M** MONTANA STATE UNIVERSITY  
CAMPUS PLANNING,  
DESIGN & CONSTRUCTION  
BOZEMAN, MONTANA  
PHONE: 406.994.5413 FAX: 406.994.5665

INDEX #	<b>46</b>
BUILDING #	<b>512</b>



1 ROOF LEVEL  
LOUISE SHUNK DAYCARE & COMMUNITY CENTER



**M** MONTANA STATE UNIVERSITY  
CAMPUS PLANNING,  
DESIGN & CONSTRUCTION  
BOZEMAN, MONTANA  
PHONE: 406.994.5413 FAX: 406.994.5665

INDEX #	<b>46</b>
BUILDING #	<b>512</b>