

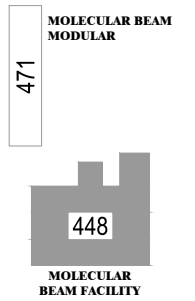
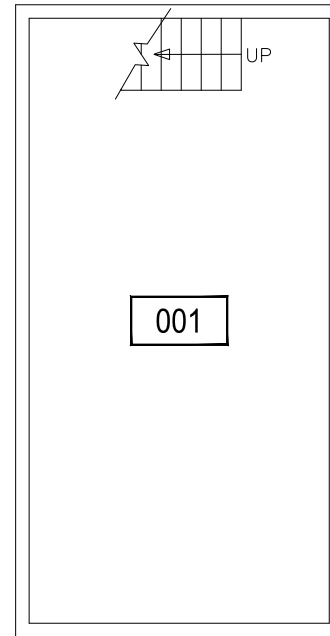


SCALE: 1/8" = 1'



BASEMENT LEVEL

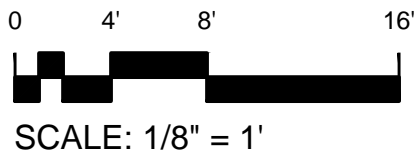
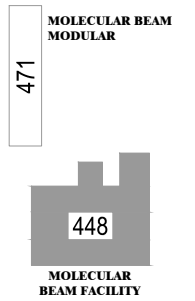
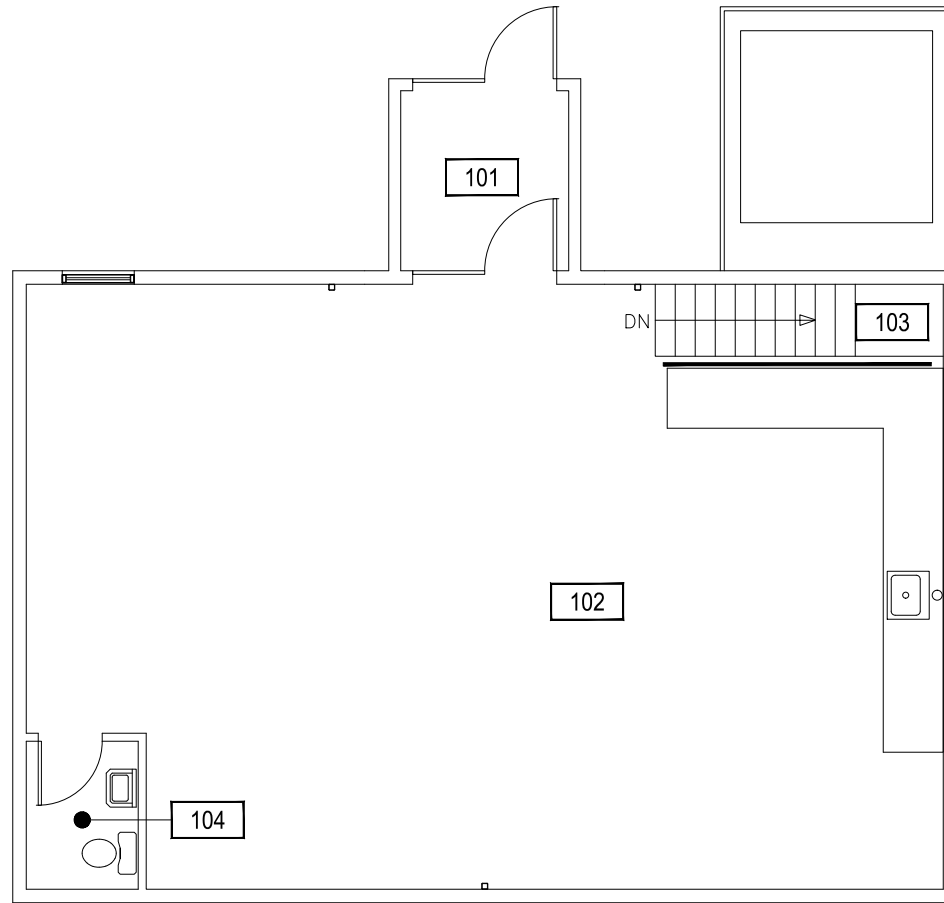
RC MOLECULAR BEAM FACILITY



M MONTANA STATE UNIVERSITY
 FACILITIES PLANNING,
 DESIGN & CONSTRUCTION
 BOZEMAN, MONTANA
 PHONE: 406.994.4131 FAX: 406.994.6572

INDEX #	81
BUILDING #	448

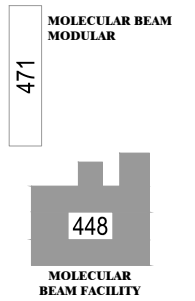
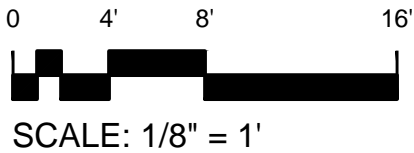
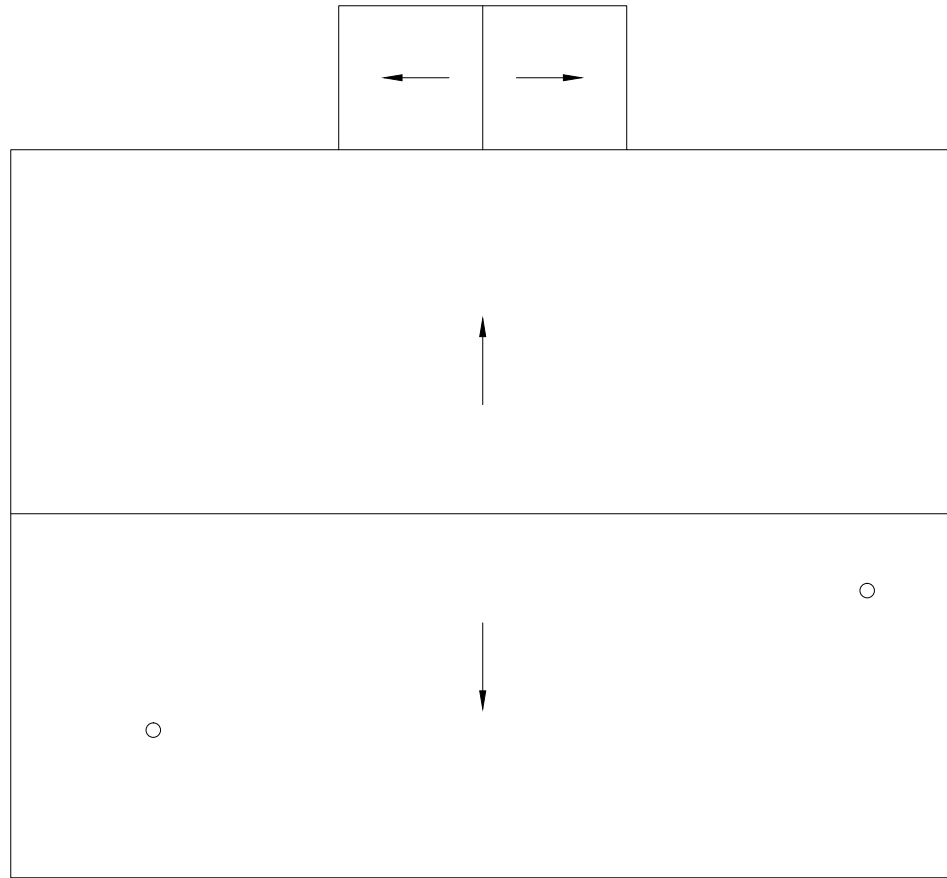
Jan 27, 2012 - 3:12pm - 448_A1.dwg
C:\Users\gary.gramer\AppData\Local\Temp\AcPublish_7916\



M MONTANA
STATE UNIVERSITY
FACILITIES PLANNING,
DESIGN & CONSTRUCTION
BOZEMAN, MONTANA
PHONE: 406.994.4131 FAX: 406.994.6572

INDEX #	81
BUILDING #	448

Jan 27, 2012 - 3:12pm - 448_AR.dwg
C:\Users\gary.gramer\AppData\Local\Temp\AcPublish_7916\



M MONTANA STATE UNIVERSITY
FACILITIES PLANNING,
DESIGN & CONSTRUCTION
BOZEMAN, MONTANA
PHONE: 406.994.4131 FAX: 406.994.6572

INDEX #
81

BUILDING #
448