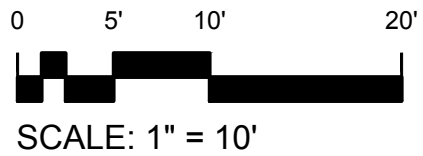
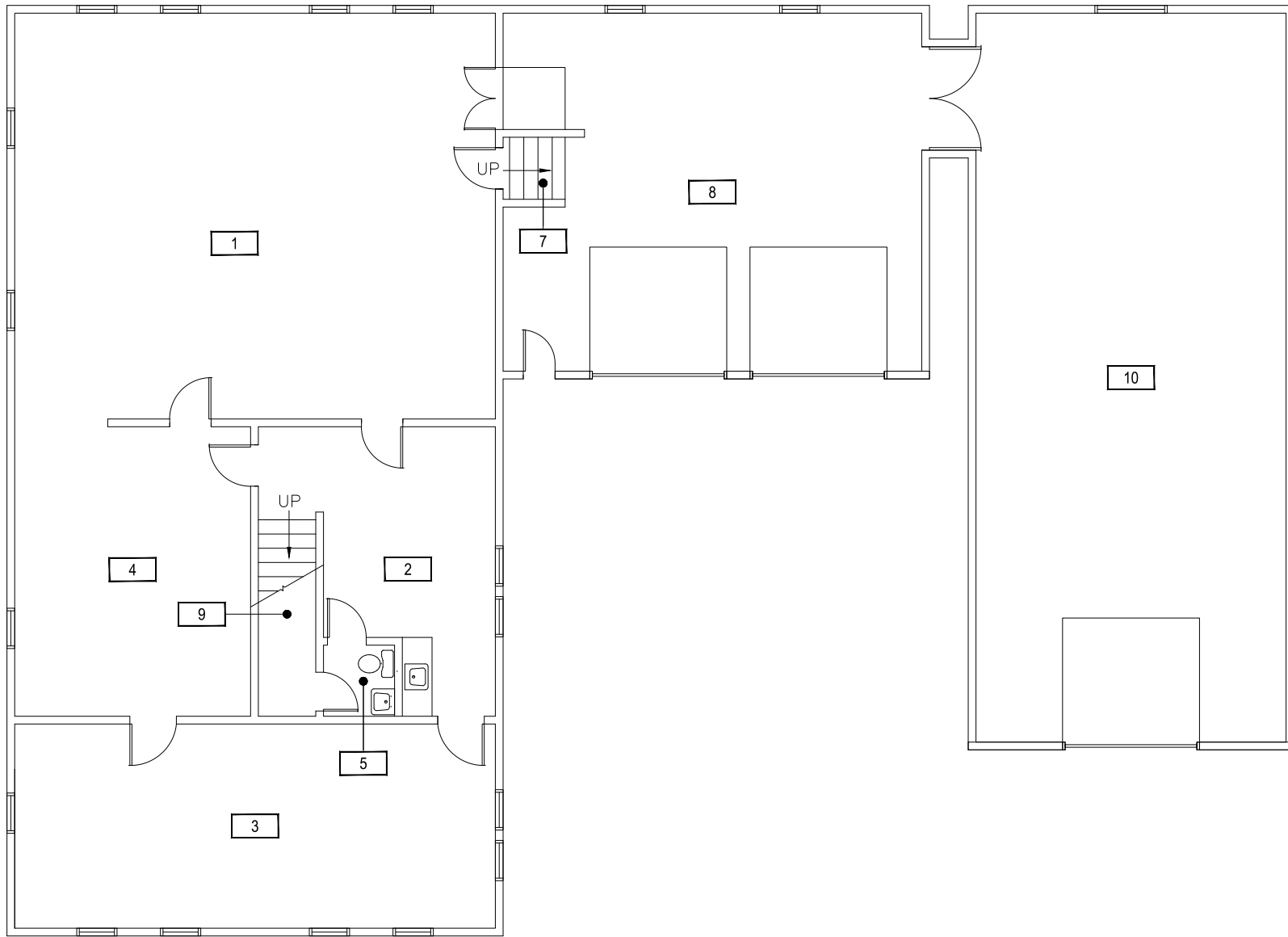
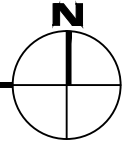


Dec 20, 2016 - 3:59pm - 405\_AB.dwg  
H:\Wool Laboratory\Building Plan - Book Copy\



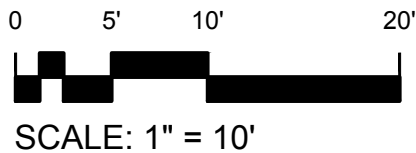
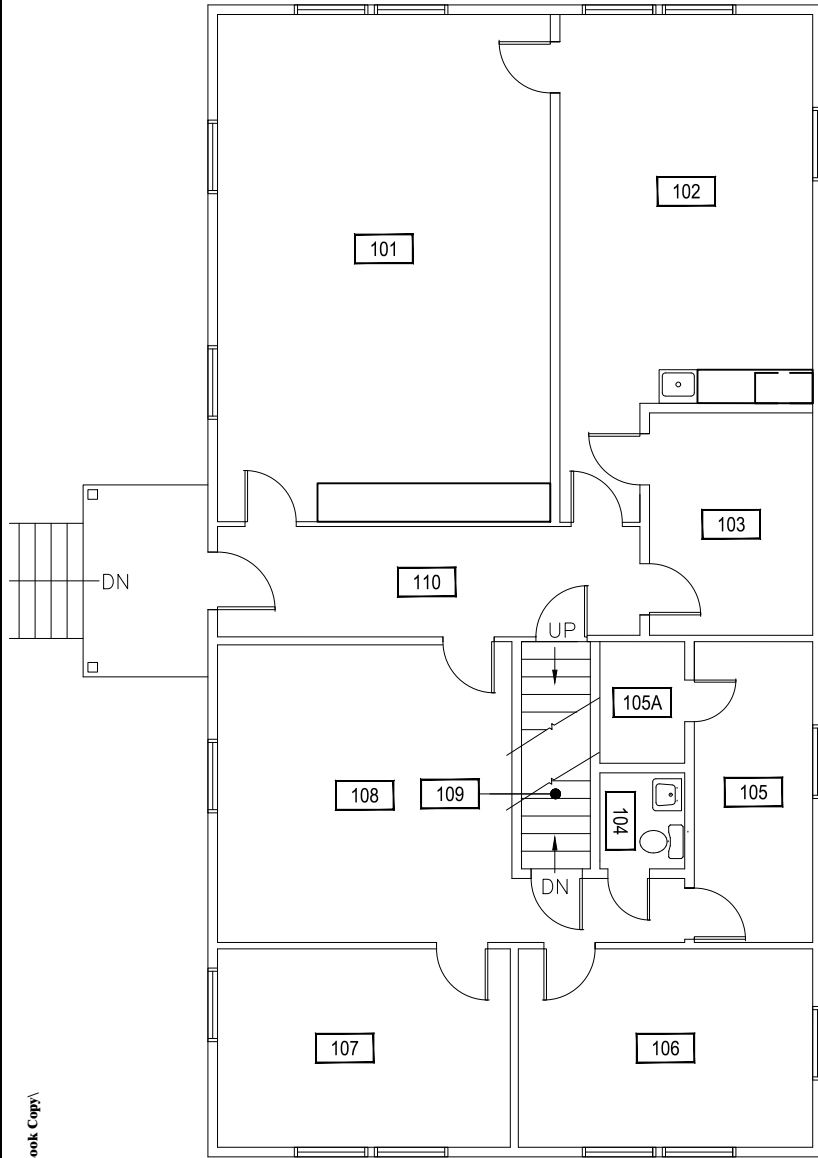
**1** BASEMENT LEVEL  
WOOL LABORATORY



**M** MONTANA STATE UNIVERSITY  
CAMPUS PLANNING,  
DESIGN & CONSTRUCTION  
BOZEMAN, MONTANA  
PHONE: 406.994.5413 FAX: 406.994.5665

INDEX #	<b>41</b>
BUILDING #	<b>405</b>

Dec 20, 2016 - 3:59pm - 405\_A1.dwg  
H:\Wool Laboratory\Building Plan - Book Copy\

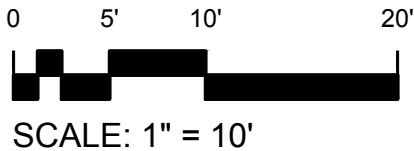
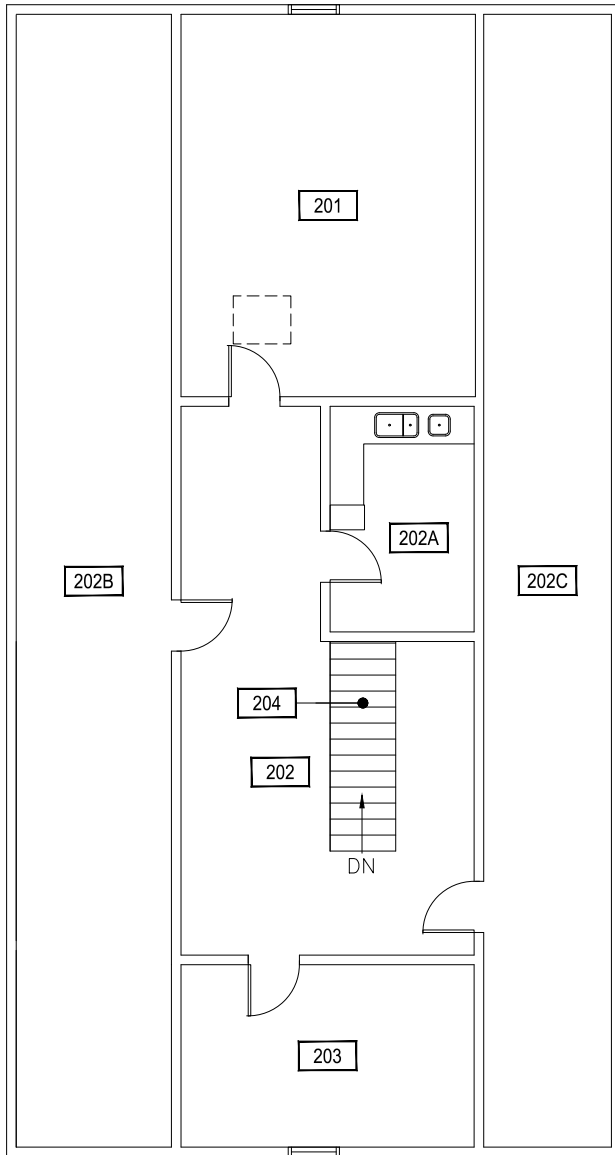


1 FIRST LEVEL  
WOOL LABORATORY

**M** MONTANA  
STATE UNIVERSITY  
CAMPUS PLANNING,  
DESIGN & CONSTRUCTION  
BOZEMAN, MONTANA  
PHONE: 406.994.5413 FAX: 406.994.5665

INDEX #	<b>41</b>
BUILDING #	<b>405</b>

Dec 20, 2016 - 3:59pm - 405\_A2.dwg  
H:\Wool Laboratory\Building Plan - Book Copy\



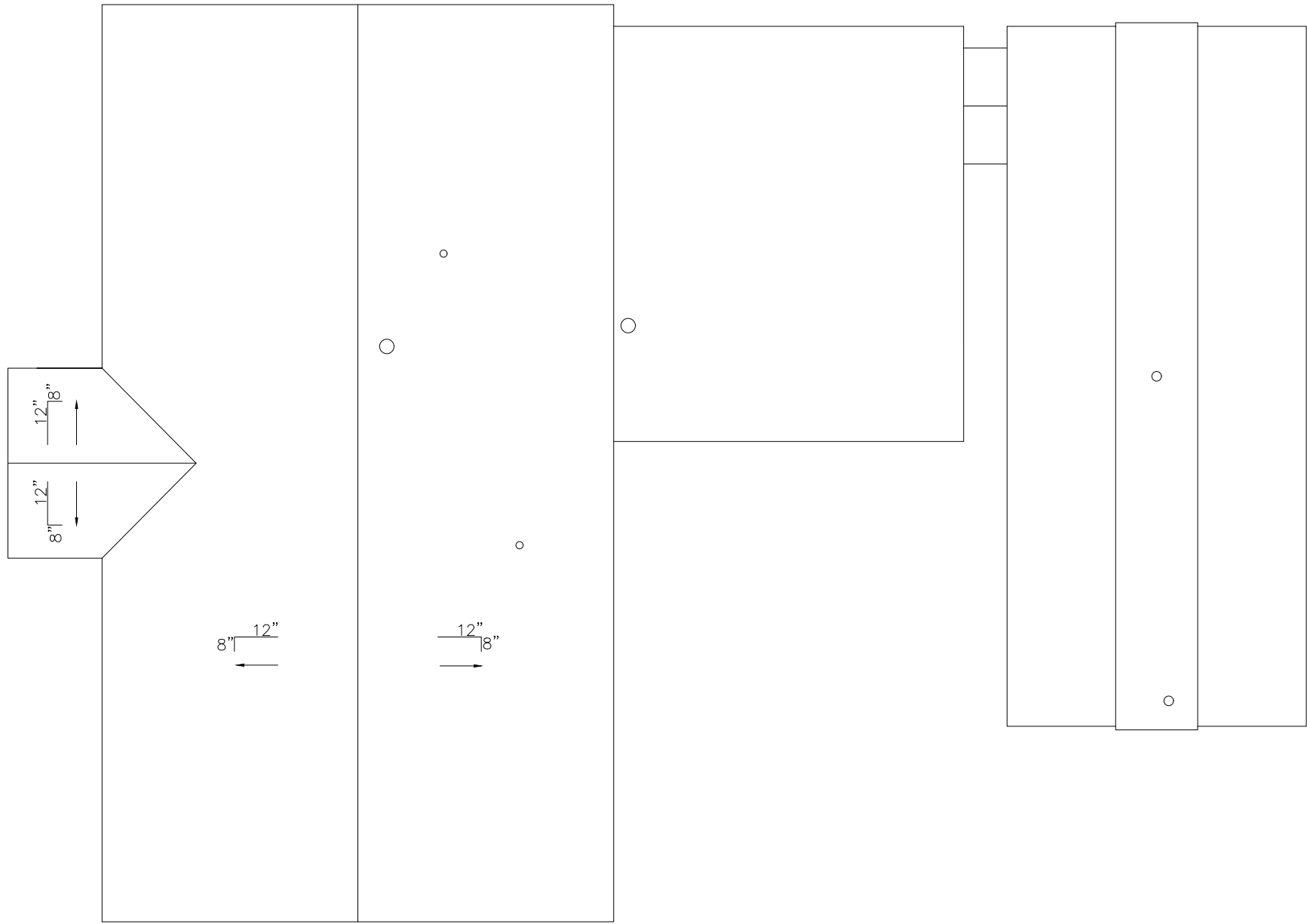
1 SECOND LEVEL  
WOOL LABORATORY



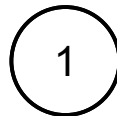
**M** MONTANA  
STATE UNIVERSITY  
CAMPUS PLANNING,  
DESIGN & CONSTRUCTION  
BOZEMAN, MONTANA  
PHONE: 406.994.5413 FAX: 406.994.5665

INDEX #  
**41**  
BUILDING #  
**405**

Dec 20, 2016 - 3:59pm - 405\_AR.dwg  
H:\Wool Laboratory\Building Plan - Book Copy\



SCALE: 1" = 10'



ROOF LEVEL  
WOOL LABORATORY



**M** MONTANA STATE UNIVERSITY  
CAMPUS PLANNING,  
DESIGN & CONSTRUCTION  
BOZEMAN, MONTANA  
PHONE: 406.994.5413 FAX: 406.994.5665

INDEX #	<b>41</b>
BUILDING #	<b>405</b>