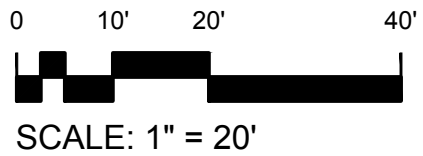
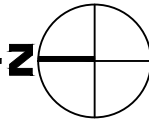


Dec 20, 2016 - 11:34am - 343_AB.dwg
Hedges Dorms\North Hedges\Building Plan - Book Copy



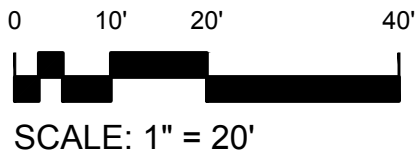
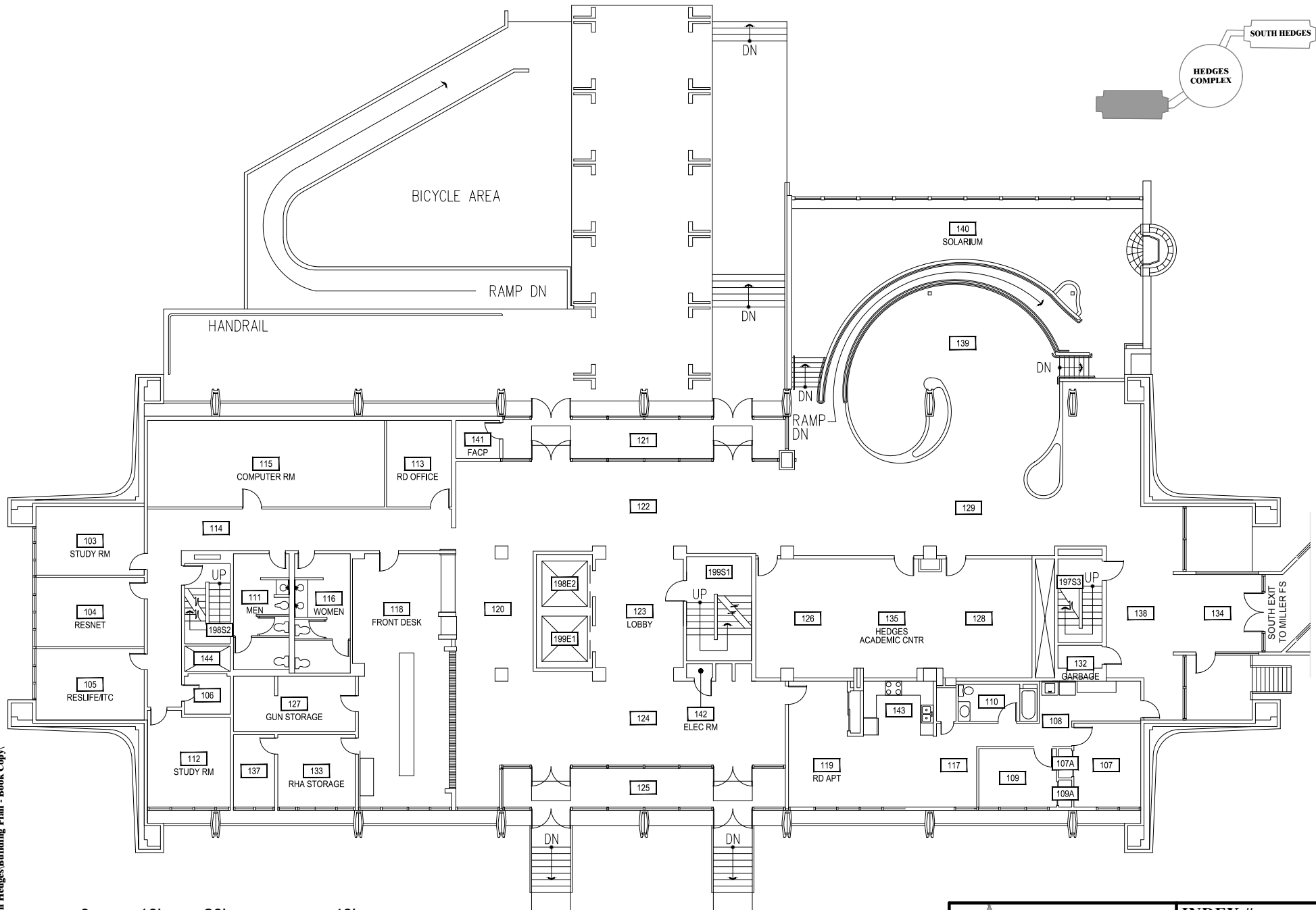
1
BASEMENT LEVEL
 NORTH HEDGES HALL



MONTANA STATE UNIVERSITY
 CAMPUS PLANNING,
 DESIGN & CONSTRUCTION
 BOZEMAN, MONTANA
 PHONE: 406.994.5413 FAX: 406.994.5665

INDEX #	36
BUILDING #	343

Dec 20, 2016 - 11:34am - 343_A1.dwg
Hedges Dorms\North Hedges\Building Plan - Book Copy

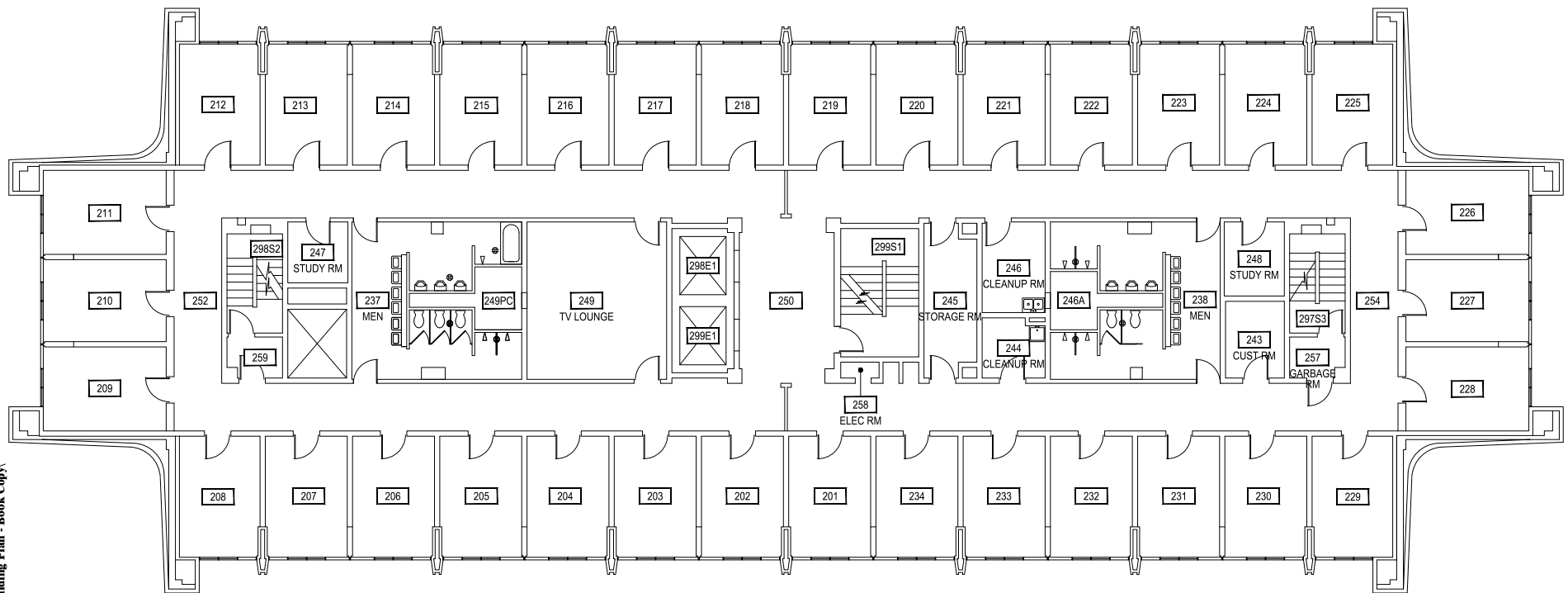
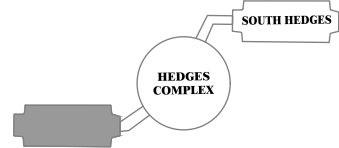


1 **FIRST LEVEL**
NORTH HEDGES HALL

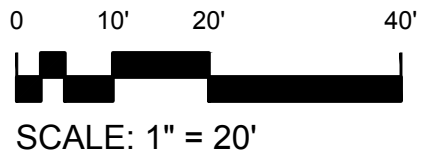


M **MONTANA STATE UNIVERSITY**
CAMPUS PLANNING,
DESIGN & CONSTRUCTION
BOZEMAN, MONTANA
PHONE: 406.994.5413 FAX: 406.994.5665

INDEX #	36
BUILDING #	343

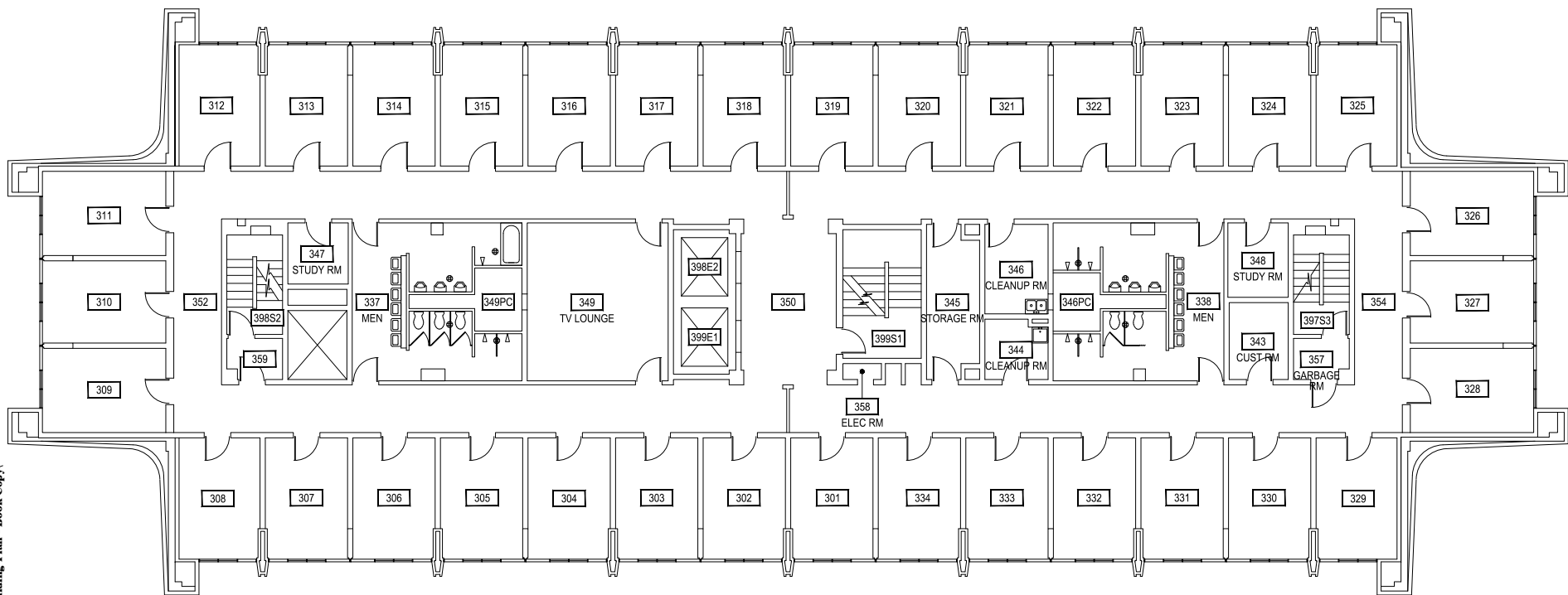
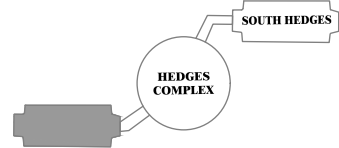


Dec 20, 2016 - 11:34am - 343_A2.dwg
Hedges Dorms\North Hedges\Building Plan - Book Copy

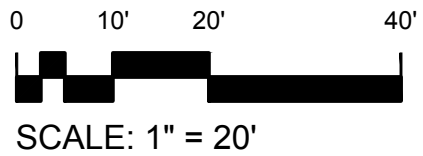


M MONTANA STATE UNIVERSITY
 CAMPUS PLANNING,
 DESIGN & CONSTRUCTION
 BOZEMAN, MONTANA
 PHONE: 406.994.5413 FAX: 406.994.5665

INDEX #	36
BUILDING #	343

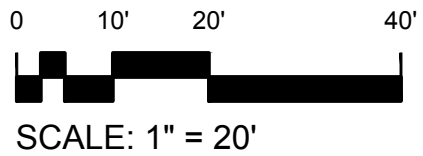
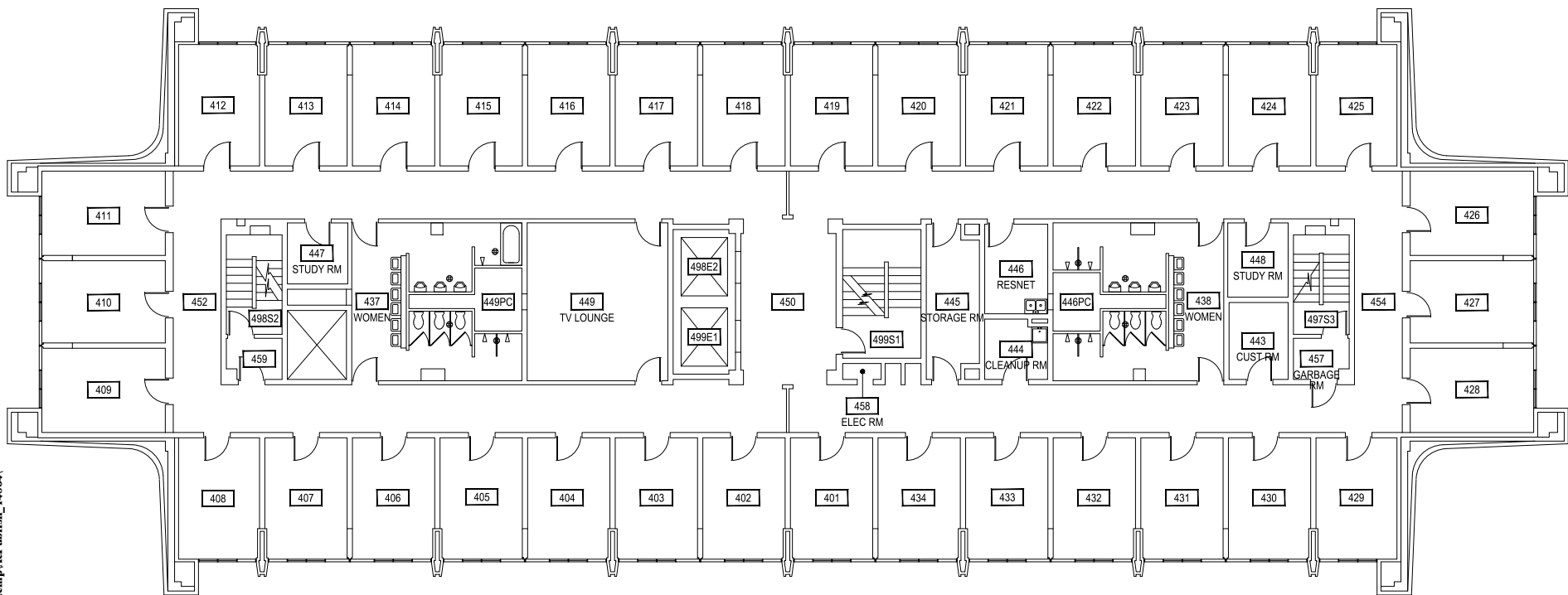
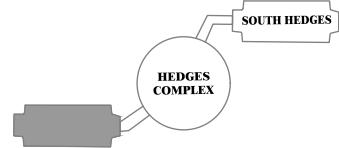


Dec 20, 2016 - 11:34am - 343_A3.dwg
Hedges Dorms\North Hedges\Building Plan - Book Copy



M MONTANA STATE UNIVERSITY
 CAMPUS PLANNING,
 DESIGN & CONSTRUCTION
 BOZEMAN, MONTANA
 PHONE: 406.994.5413 FAX: 406.994.5665

INDEX #	36
BUILDING #	343

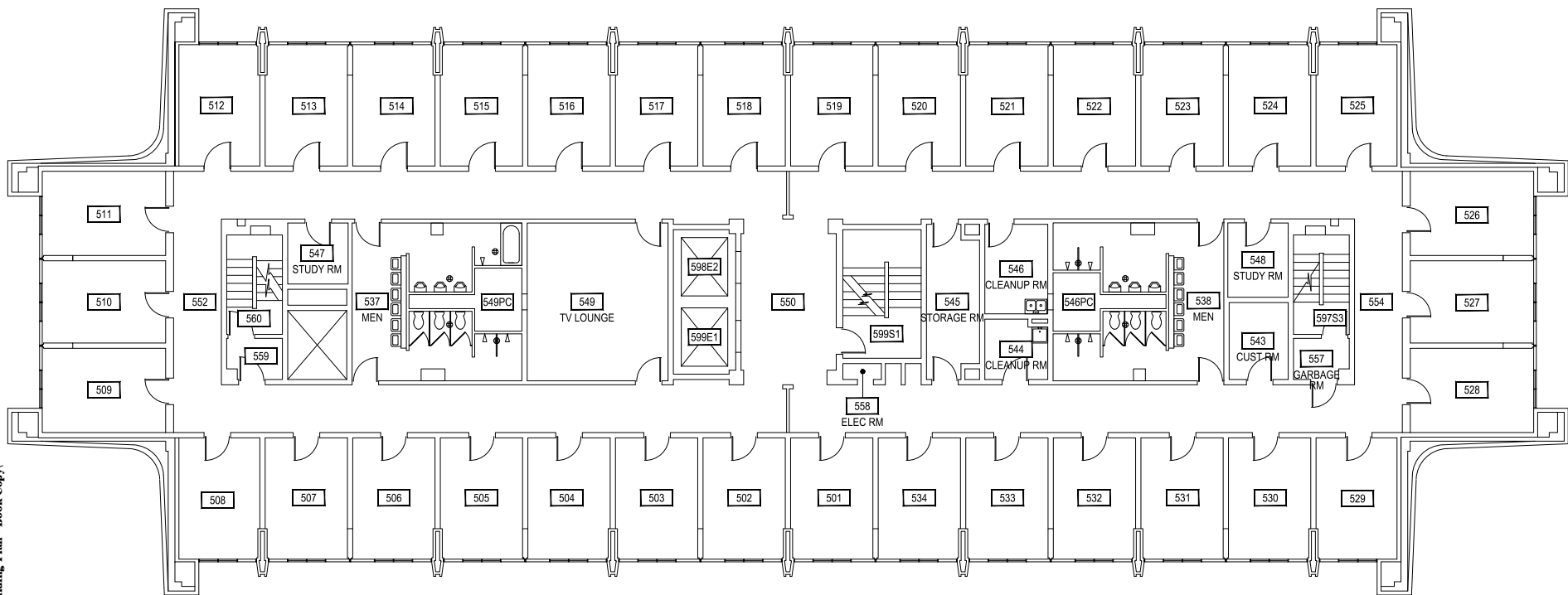
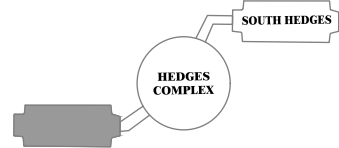


1 FOURTH LEVEL
NORTH HEDGES HALL

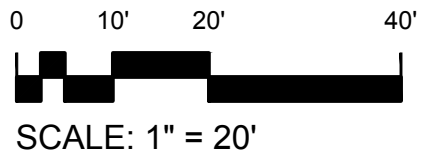
M MONTANA STATE UNIVERSITY
CAMPUS PLANNING,
DESIGN & CONSTRUCTION
BOZEMAN, MONTANA
PHONE: 406.994.5413 FAX: 406.994.5665

INDEX #	36
BUILDING #	343

Dec 20, 2016 - 11:34am - 343_A4.dwg
C:\Users\gary.grunert\AppData\Local\Temp\AcP\publish_14864\

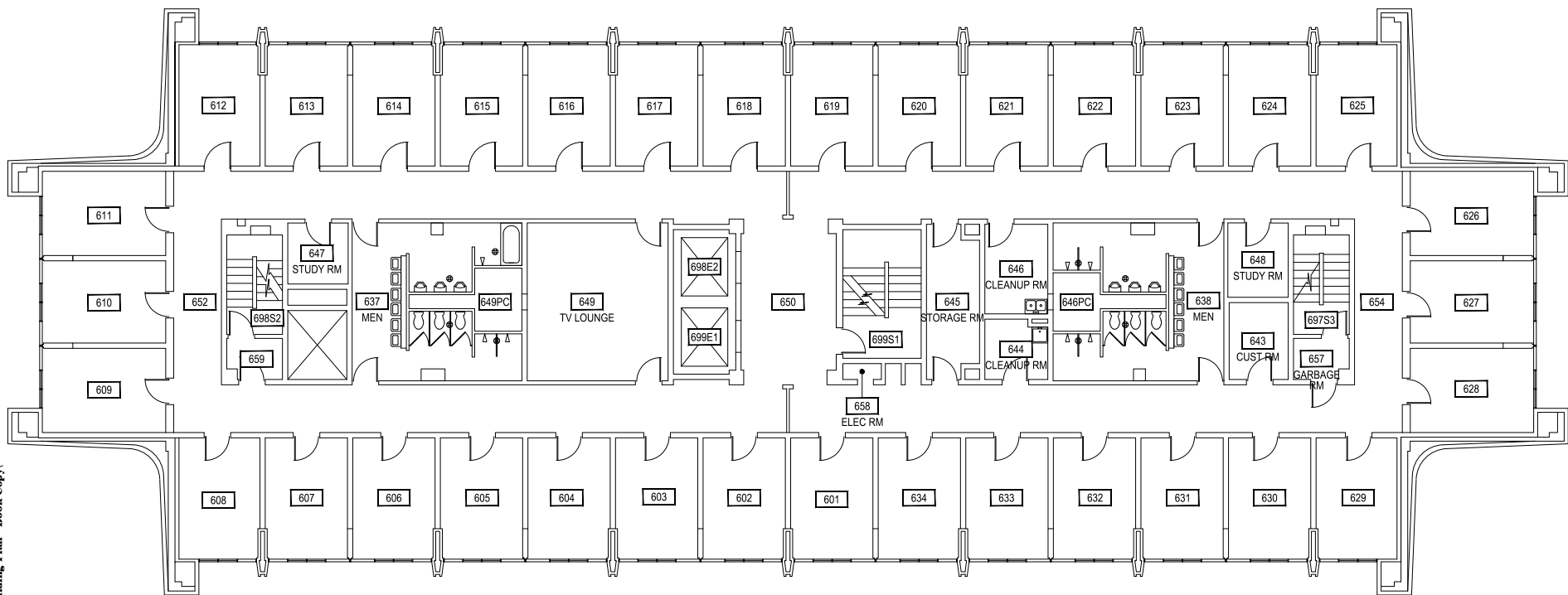
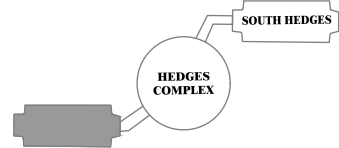


Dec 20, 2016 - 11:34am - 343_A5.dwg
Hedges Dorms\North Hedges\Building Plan - Book Copy

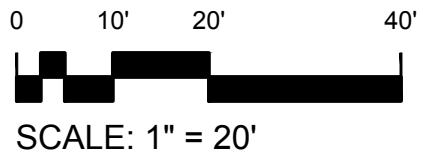


M MONTANA STATE UNIVERSITY
 CAMPUS PLANNING,
 DESIGN & CONSTRUCTION
 BOZEMAN, MONTANA
 PHONE: 406.994.5413 FAX: 406.994.5665

INDEX #	36
BUILDING #	343



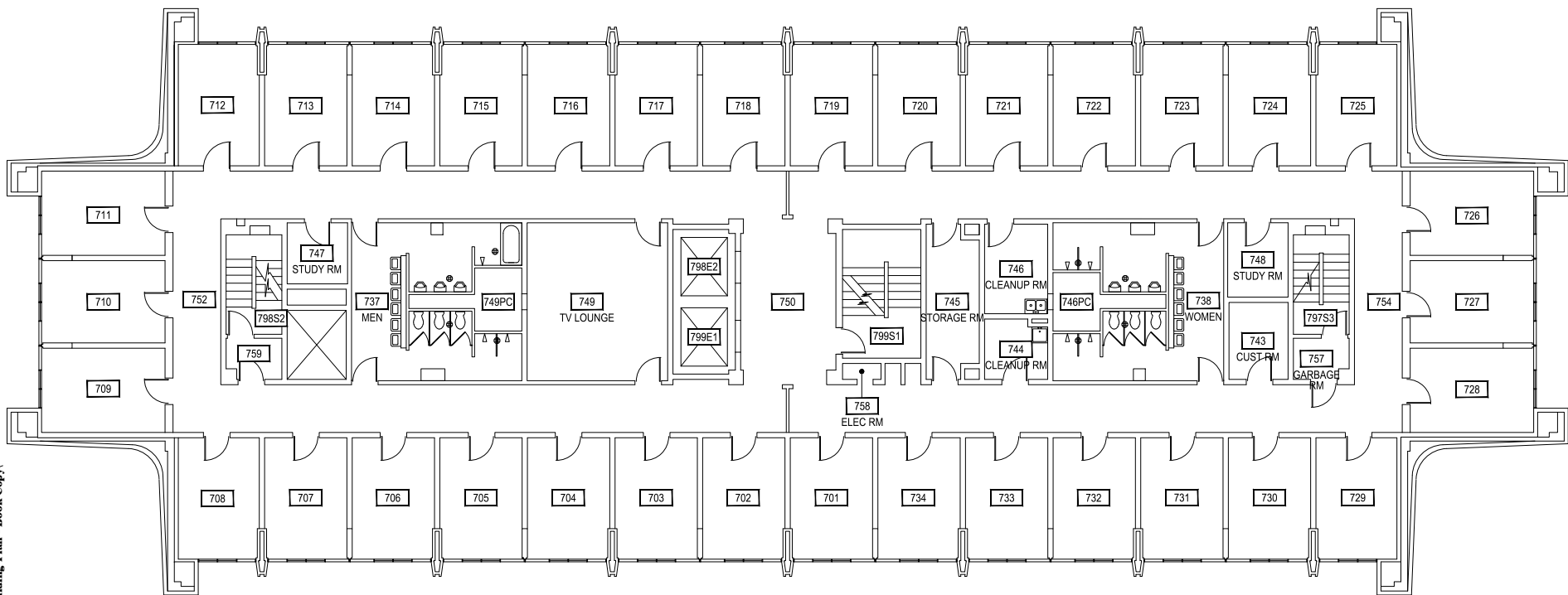
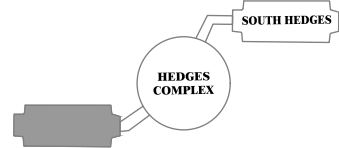
Dec 20, 2016 - 11:34am - 343_A6.dwg
Hedges Dorms\North Hedges\Building Plan - Book Copy



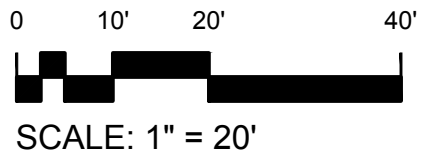
1 **SIXTH LEVEL**
NORTH HEDGES HALL

M MONTANA STATE UNIVERSITY
CAMPUS PLANNING,
DESIGN & CONSTRUCTION
BOZEMAN, MONTANA
PHONE: 406.994.5413 FAX: 406.994.5665

INDEX #	36
BUILDING #	343



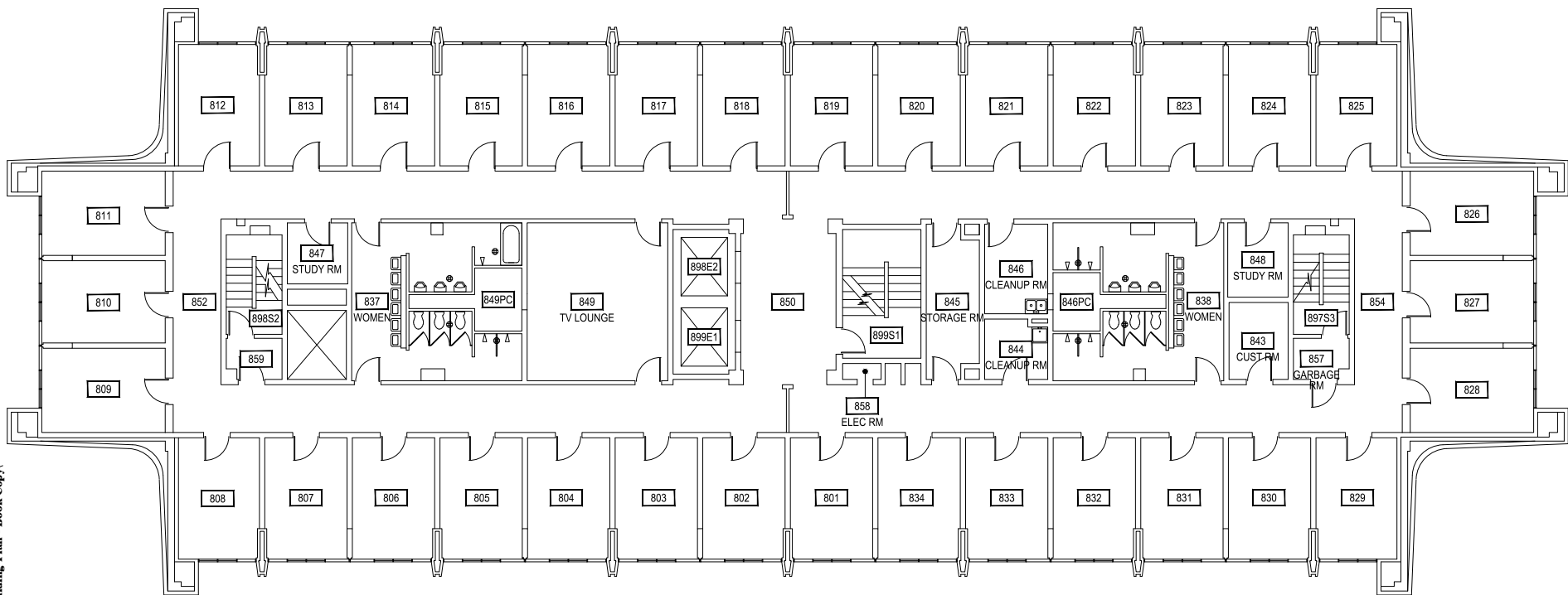
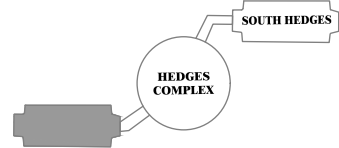
Dec 20, 2016 - 11:34am - 343_A7.dwg
Hedges Dorms\North Hedges\Building Plan - Book Copy



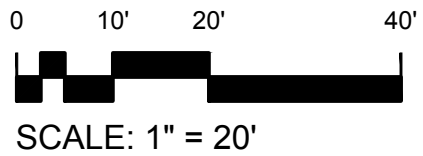
1 SEVENTH LEVEL
NORTH HEDGES HALL

M MONTANA STATE UNIVERSITY
CAMPUS PLANNING,
DESIGN & CONSTRUCTION
BOZEMAN, MONTANA
PHONE: 406.994.5413 FAX: 406.994.5665

INDEX #	36
BUILDING #	343



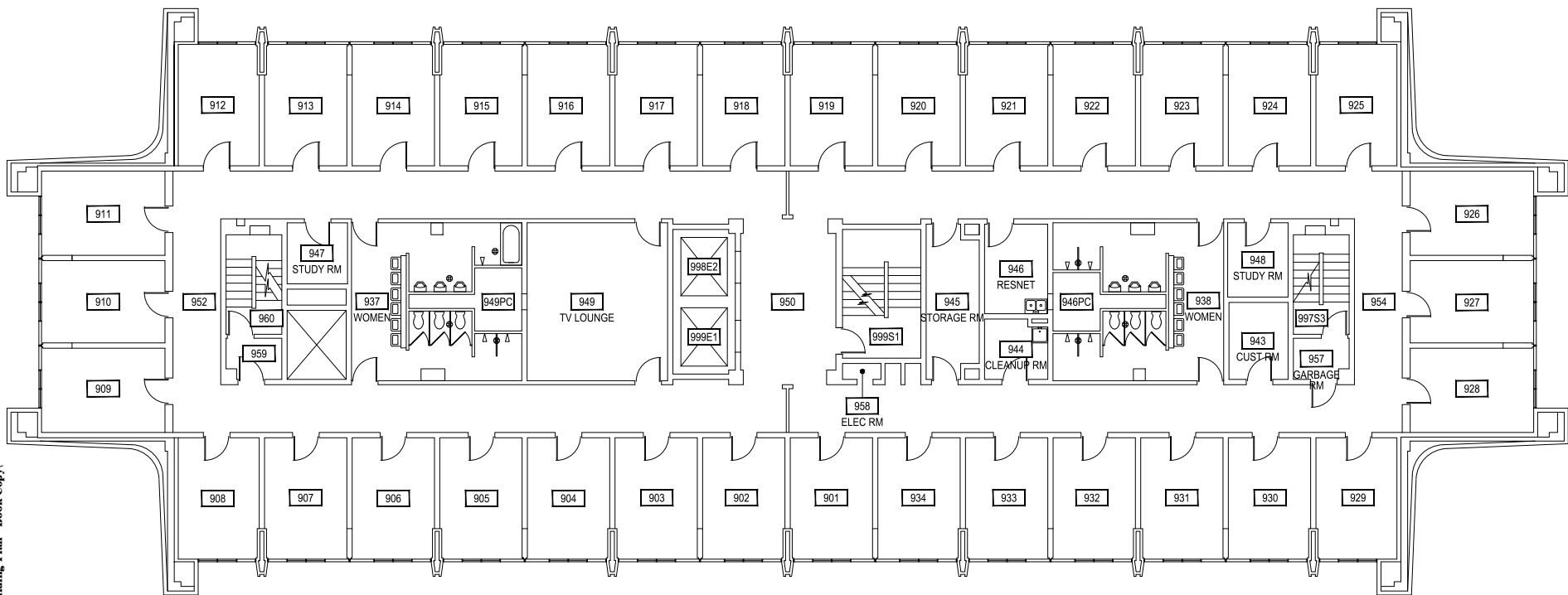
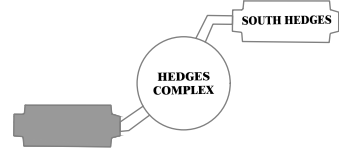
Dec 20, 2016 - 11:34am - 343_A8.dwg
Hedges Dorms\North Hedges\Building Plan - Book Copy



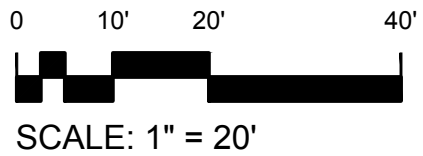
1 EIGHTH LEVEL
NORTH HEDGES HALL

M MONTANA STATE UNIVERSITY
CAMPUS PLANNING,
DESIGN & CONSTRUCTION
BOZEMAN, MONTANA
PHONE: 406.994.5413 FAX: 406.994.5665

INDEX #	36
BUILDING #	343

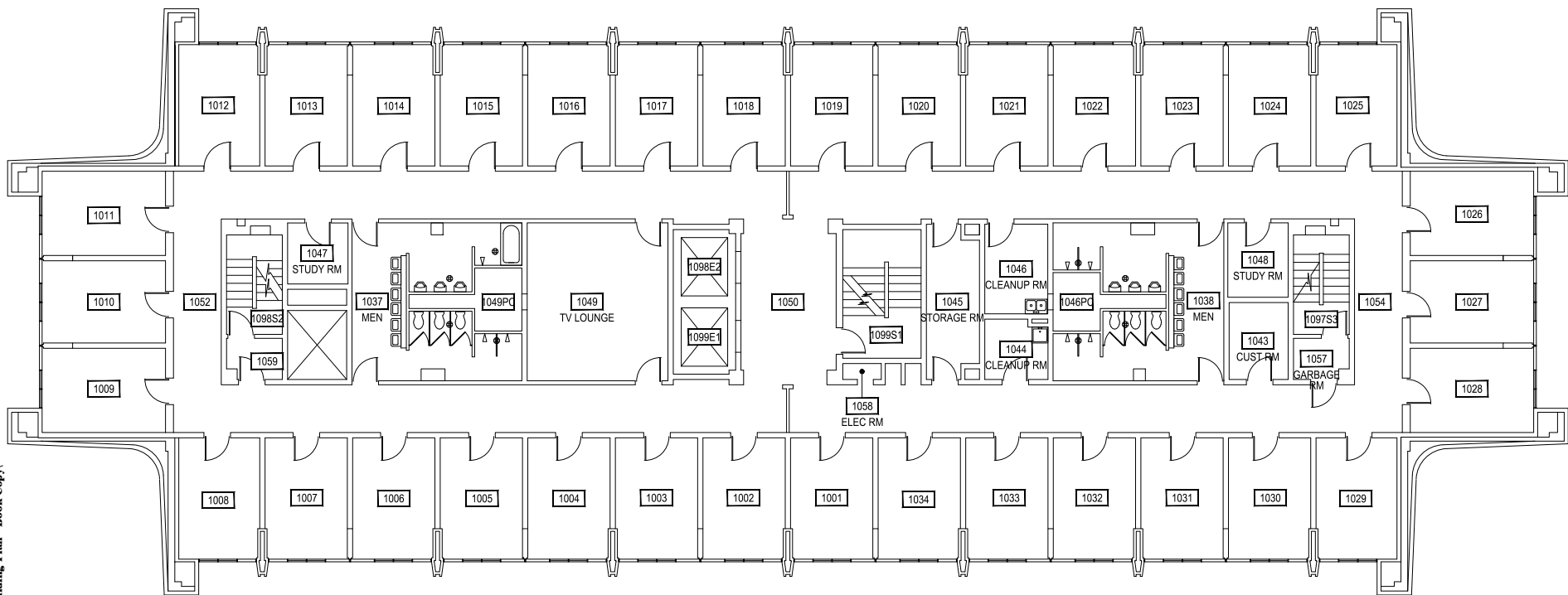
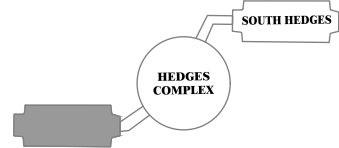


Dec 20, 2016 - 11:34am - 343_A0.dwg
Hedges Dorms\North Hedges\Building Plan - Book Copy

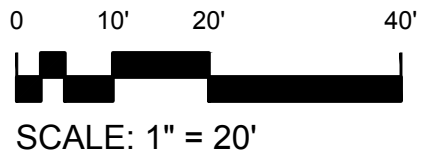


M MONTANA STATE UNIVERSITY
 CAMPUS PLANNING,
 DESIGN & CONSTRUCTION
 BOZEMAN, MONTANA
 PHONE: 406.994.5413 FAX: 406.994.5665

INDEX #	36
BUILDING #	343



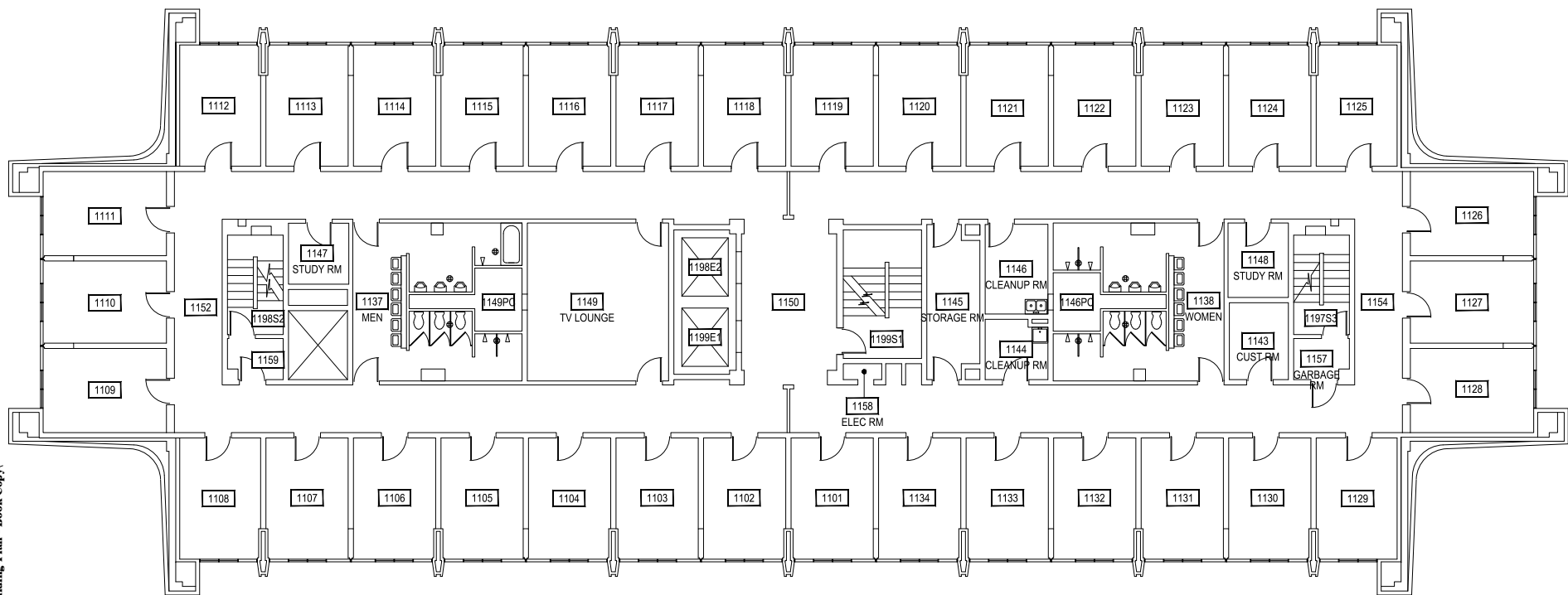
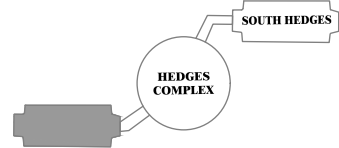
Dec 20, 2016 - 11:34am - 343_A10.dwg
Hedges Dorms\North Hedges\Building Plan - Book Copy



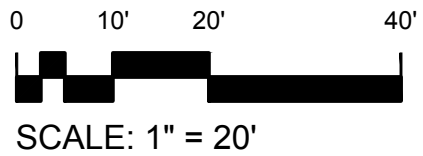
1
TENTH LEVEL
NORTH HEDGES HALL
Z

MONTANA STATE UNIVERSITY
 CAMPUS PLANNING,
 DESIGN & CONSTRUCTION
 BOZEMAN, MONTANA
 PHONE: 406.994.5413 FAX: 406.994.5665

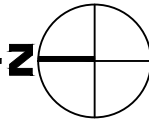
INDEX #	36
BUILDING #	343



Dec 20, 2016 - 11:34am - 343_A11.dwg
Hedges Dorms/North Hedges/Building Plan - Book Copy



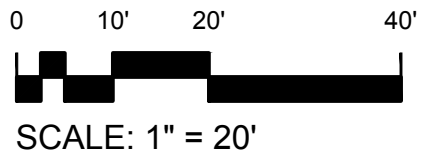
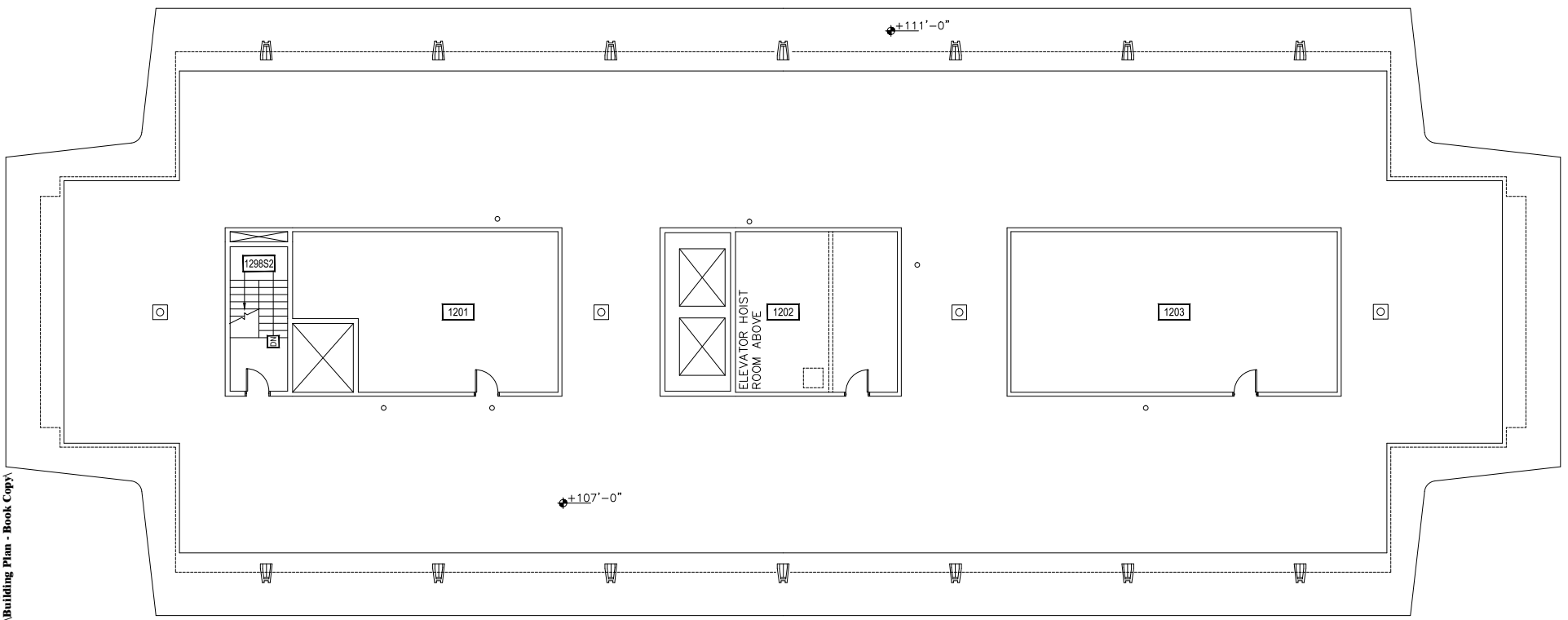
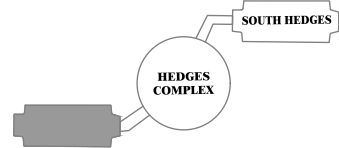
1
ELEVENTH LEVEL
 NORTH HEDGES HALL



MONTANA STATE UNIVERSITY
 CAMPUS PLANNING,
 DESIGN & CONSTRUCTION
 BOZEMAN, MONTANA
 PHONE: 406.994.5413 FAX: 406.994.5665

INDEX #	36
BUILDING #	343

Dec 20, 2016 - 11:34am - 343_AP.dwg
Hedges Dorms\North Hedges\Building Plan - Book Copy



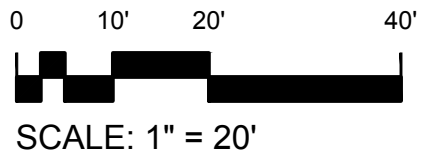
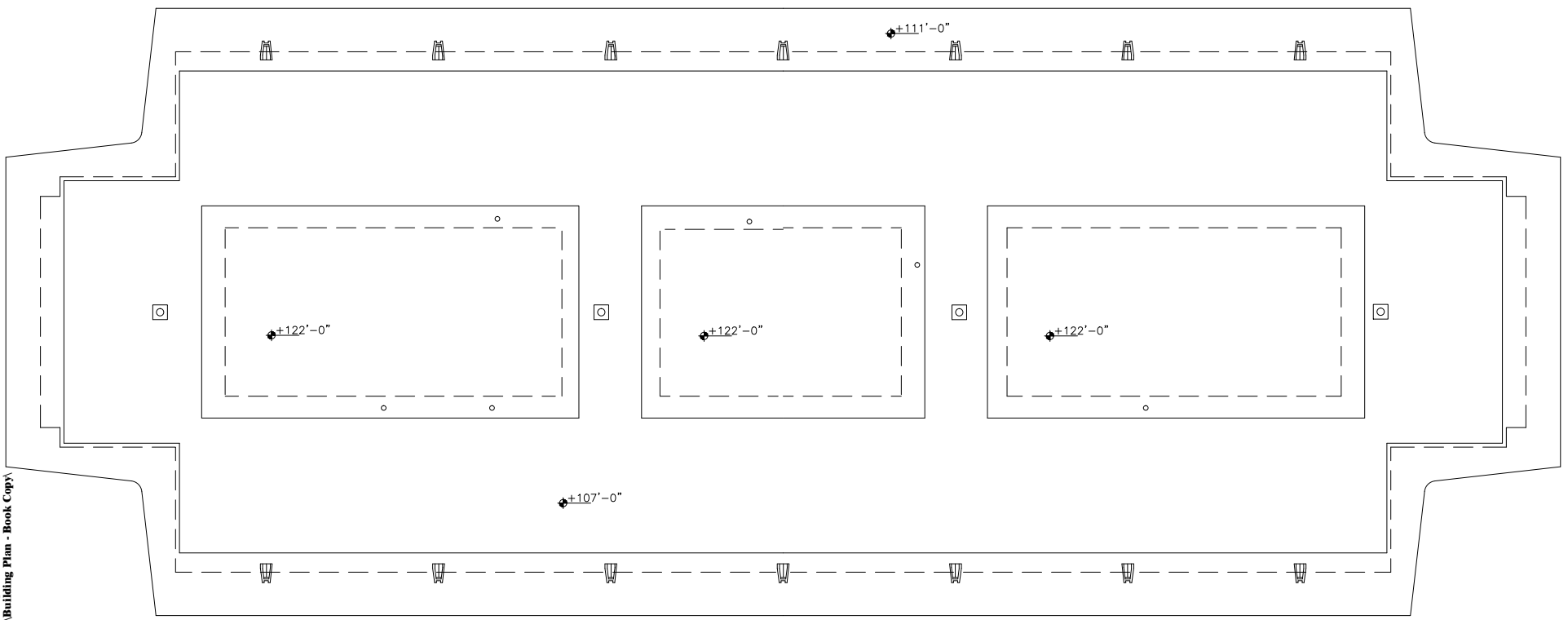
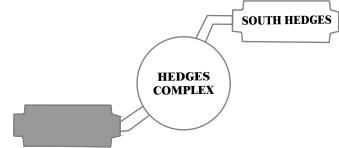
1 PENTHOUSE LEVEL
NORTH HEDGES HALL



MONTANA STATE UNIVERSITY
CAMPUS PLANNING,
DESIGN & CONSTRUCTION
BOZEMAN, MONTANA
PHONE: 406.994.5413 FAX: 406.994.5665

INDEX #	36
BUILDING #	343

Dec 20, 2016 - 11:34am - 343_AR.dwg
Hedges Dorms\North Hedges\Building Plan - Book Copy



The logo for Montana State University, featuring a stylized "M" with a mountain peak, is on the left. To its right, the text reads "MONTANA STATE UNIVERSITY", "CAMPUS PLANNING, DESIGN & CONSTRUCTION", "BOZEMAN, MONTANA", "PHONE: 406.994.5413 FAX: 406.994.5665".

INDEX #	36
BUILDING #	343