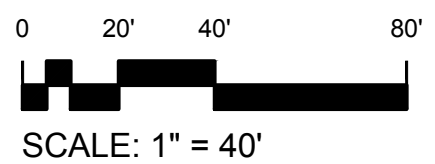


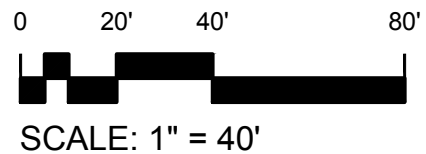
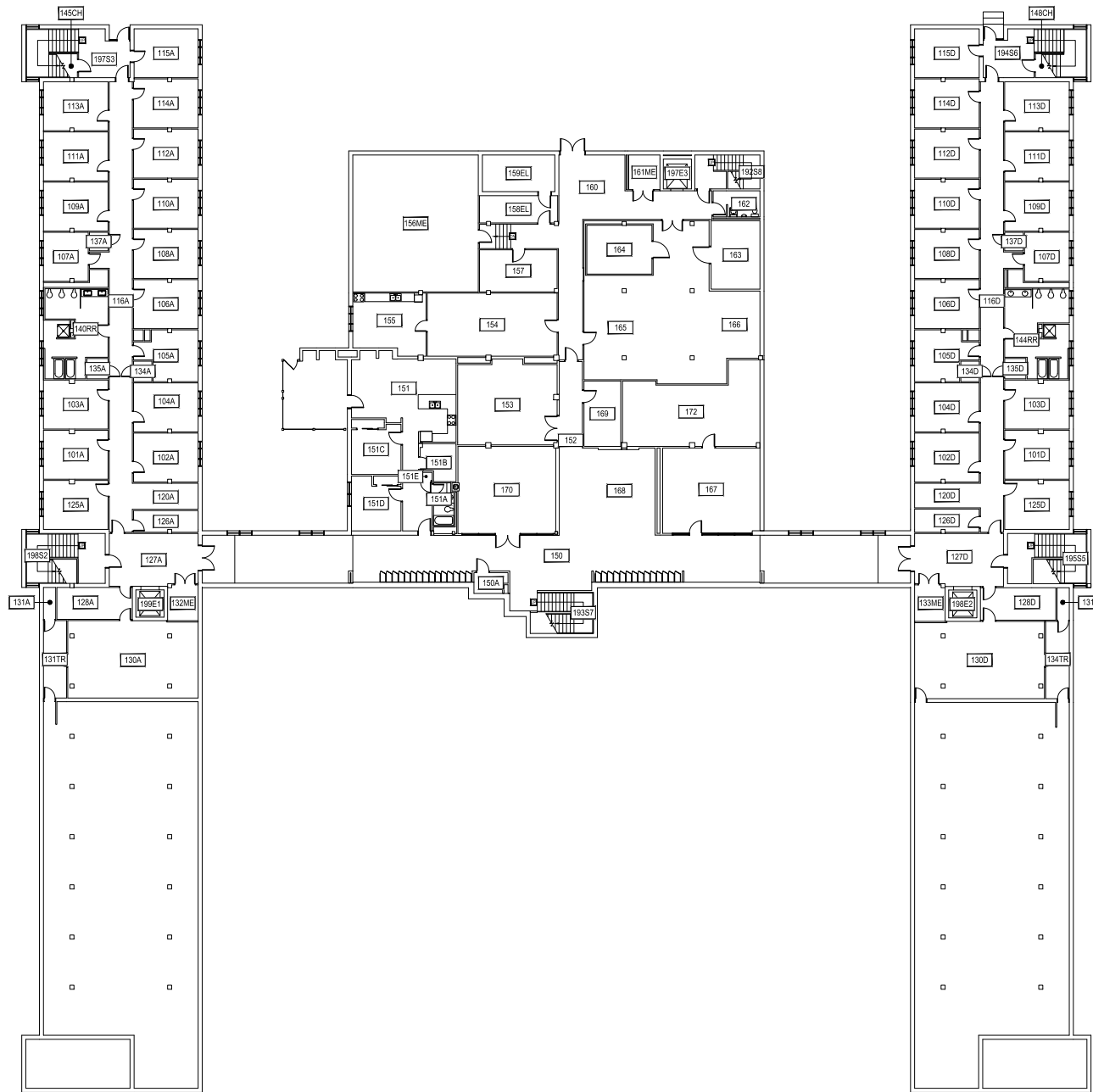
Jan 28, 2016 - 7:43am - 336_AB.dwg
 H:\Hapner Hall\Building Plan - Book Copy\



1 BASEMENT LEVEL
 HAPNER HALL

<p>MONTANA STATE UNIVERSITY CAMPUS PLANNING, DESIGN & CONSTRUCTION BOZEMAN, MONTANA PHONE: 406.994.5413 FAX: 406.994.5665</p>	INDEX #	33
	BUILDING #	336

Jan 28, 2016 - 7:43am - 336_A1.dwg
H:\Hapner Hall\Building Plan - Book Copy\

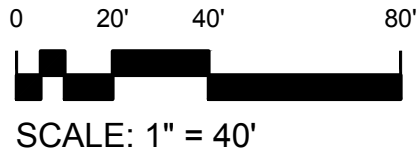
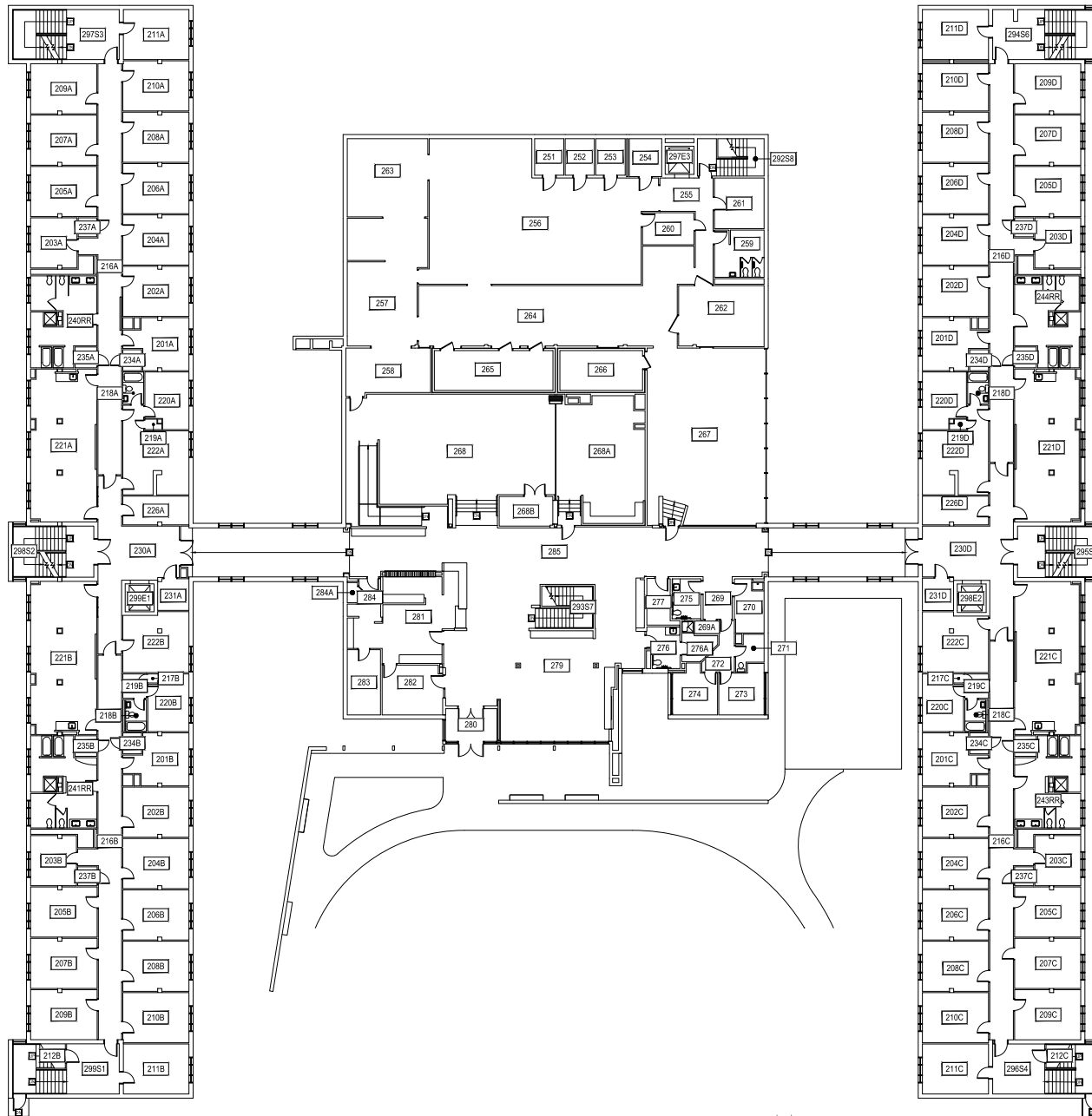


1 FIRST LEVEL
HAPNER HALL



M MONTANA STATE UNIVERSITY
CAMPUS PLANNING,
DESIGN & CONSTRUCTION
BOZEMAN, MONTANA
PHONE: 406.994.5413 FAX: 406.994.5665

INDEX #
33
BUILDING #
336

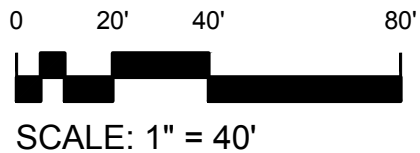
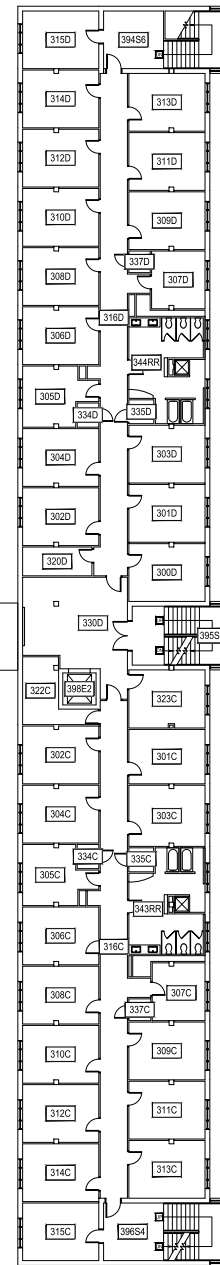
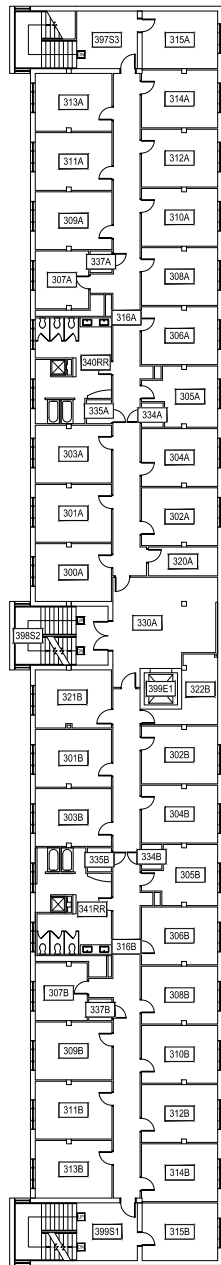


1 SECOND LEVEL
HAPNER HALL



M MONTANA
STATE UNIVERSITY
CAMPUS PLANNING,
DESIGN & CONSTRUCTION
BOZEMAN, MONTANA
PHONE: 406.994.5413 FAX: 406.994.5665

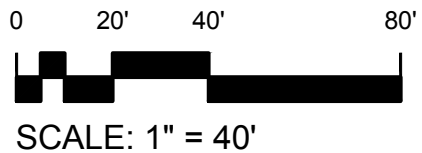
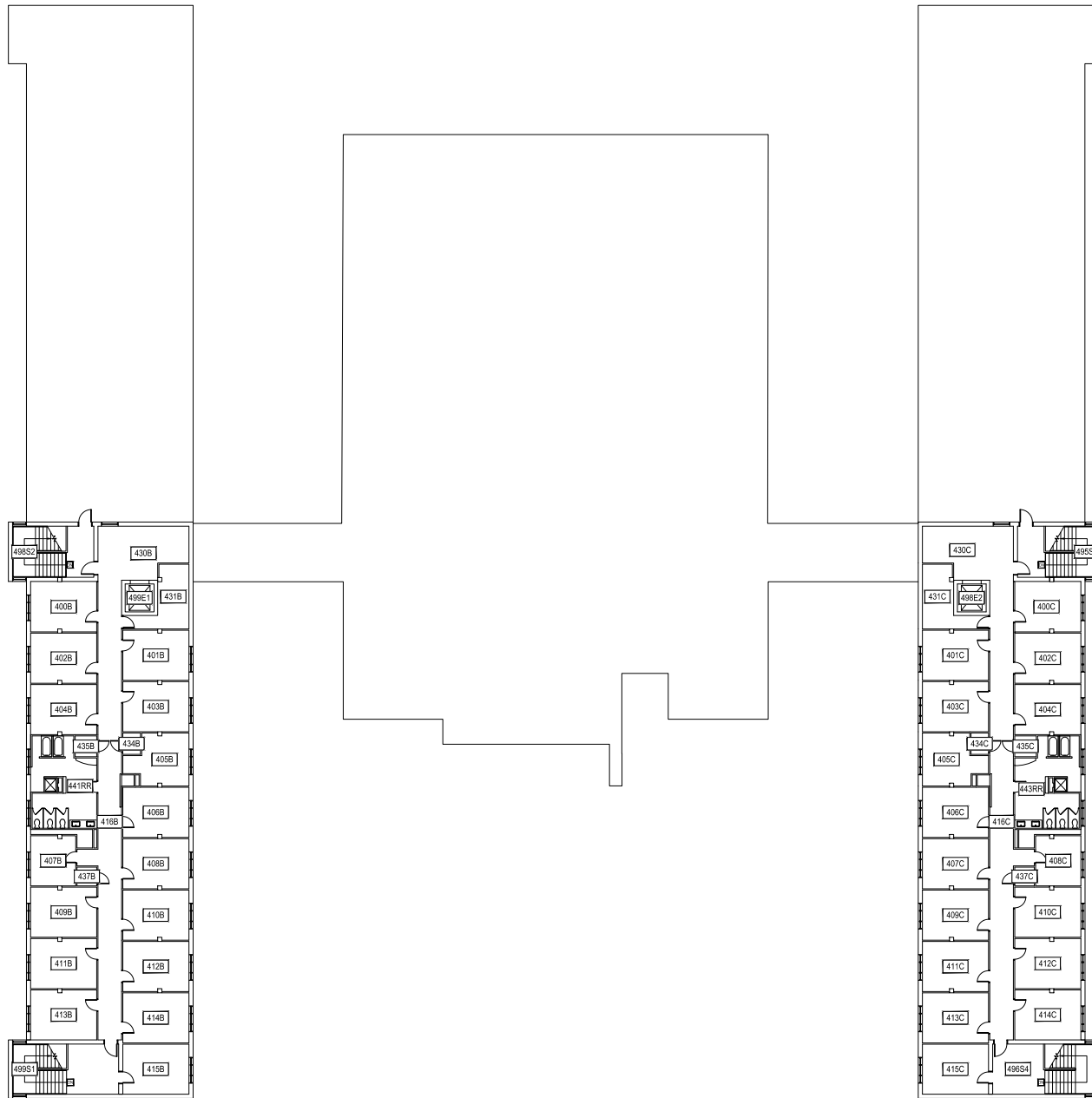
INDEX #
33
BUILDING #
336



1 THIRD LEVEL
HAPNER HALL

M MONTANA STATE UNIVERSITY
CAMPUS PLANNING,
DESIGN & CONSTRUCTION
BOZEMAN, MONTANA
PHONE: 406.994.5413 FAX: 406.994.5665

INDEX #	33
BUILDING #	336

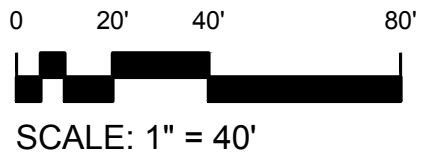
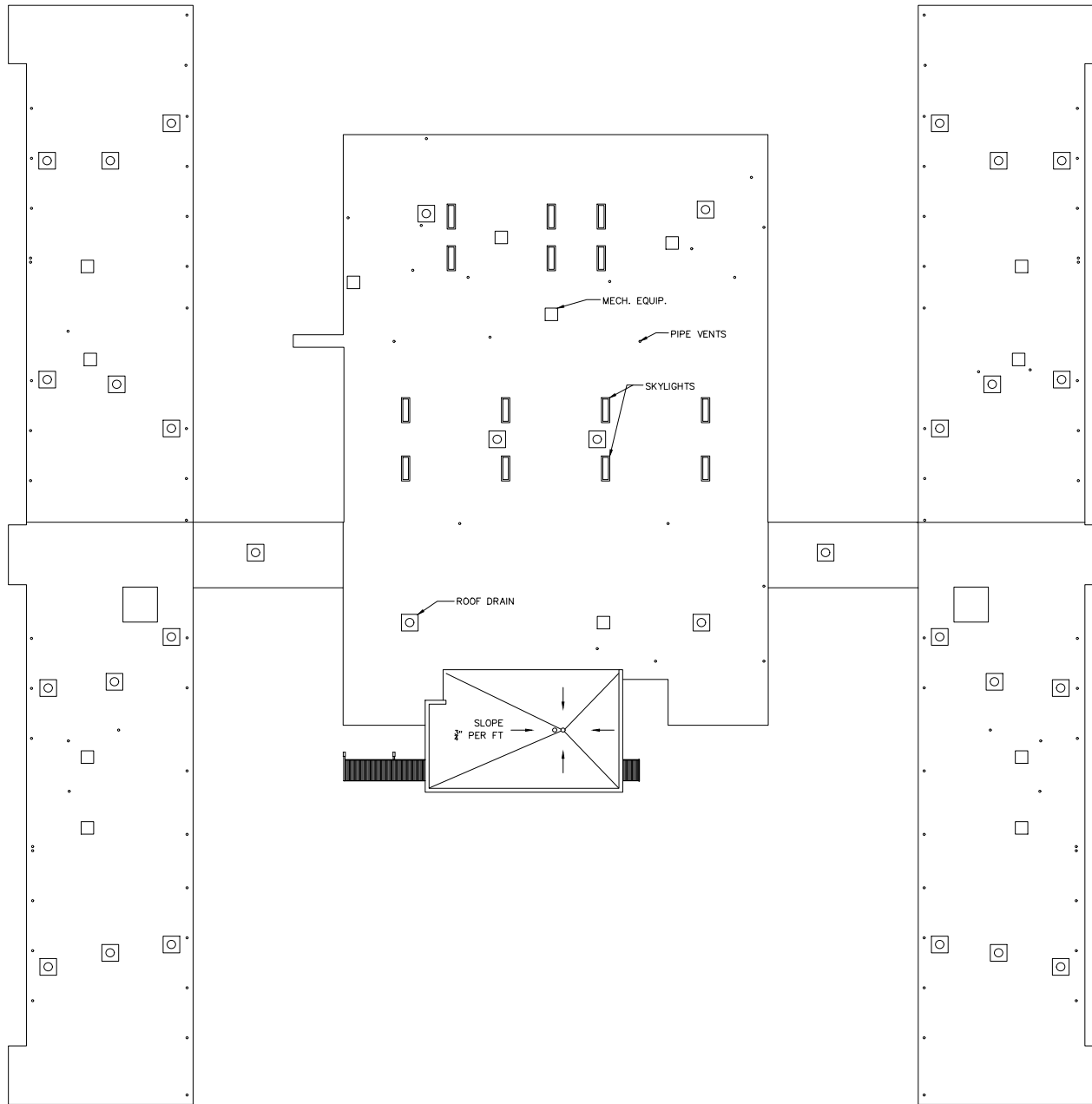


1 FOURTH LEVEL
HAPNER HALL

M MONTANA
STATE UNIVERSITY
CAMPUS PLANNING,
DESIGN & CONSTRUCTION
BOZEMAN, MONTANA
PHONE: 406.994.5413 FAX: 406.994.5665

INDEX #	33
BUILDING #	336

Jan 28, 2016 - 7:43am - 336_AR.dwg
H:\Hapner Hall\Building Plan - Book Copy\



1

ROOF LEVEL
HAPNER HALL



M MONTANA
STATE UNIVERSITY
CAMPUS PLANNING,
DESIGN & CONSTRUCTION
BOZEMAN, MONTANA
PHONE: 406.994.5413 FAX: 406.994.5665

INDEX #	33
BUILDING #	336