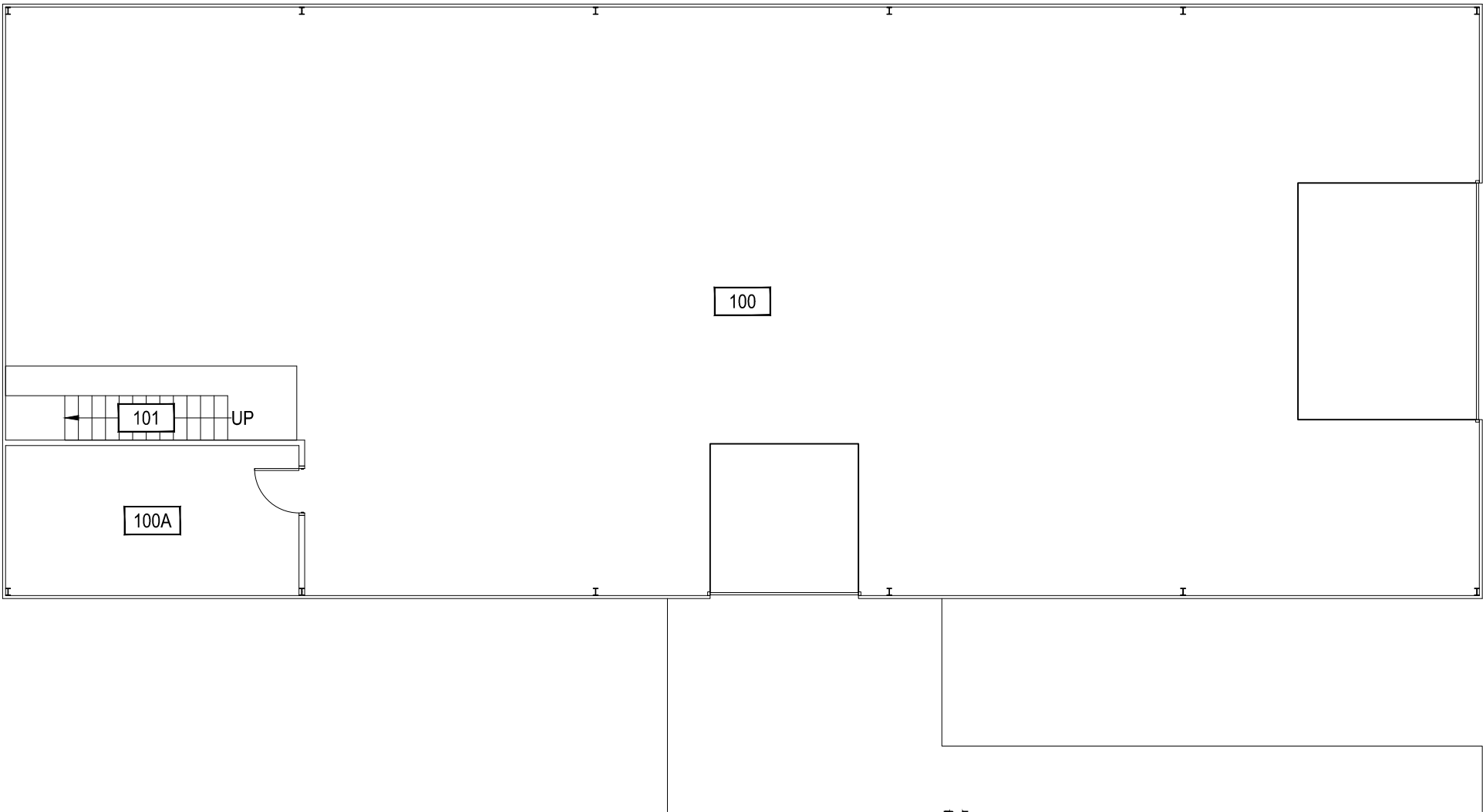
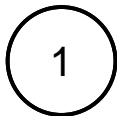


Oct04, 2012 - 4:23pm - 319_A1.dwg
HP\New Yard\Building Plan Book\



SCALE: 1" = 10'

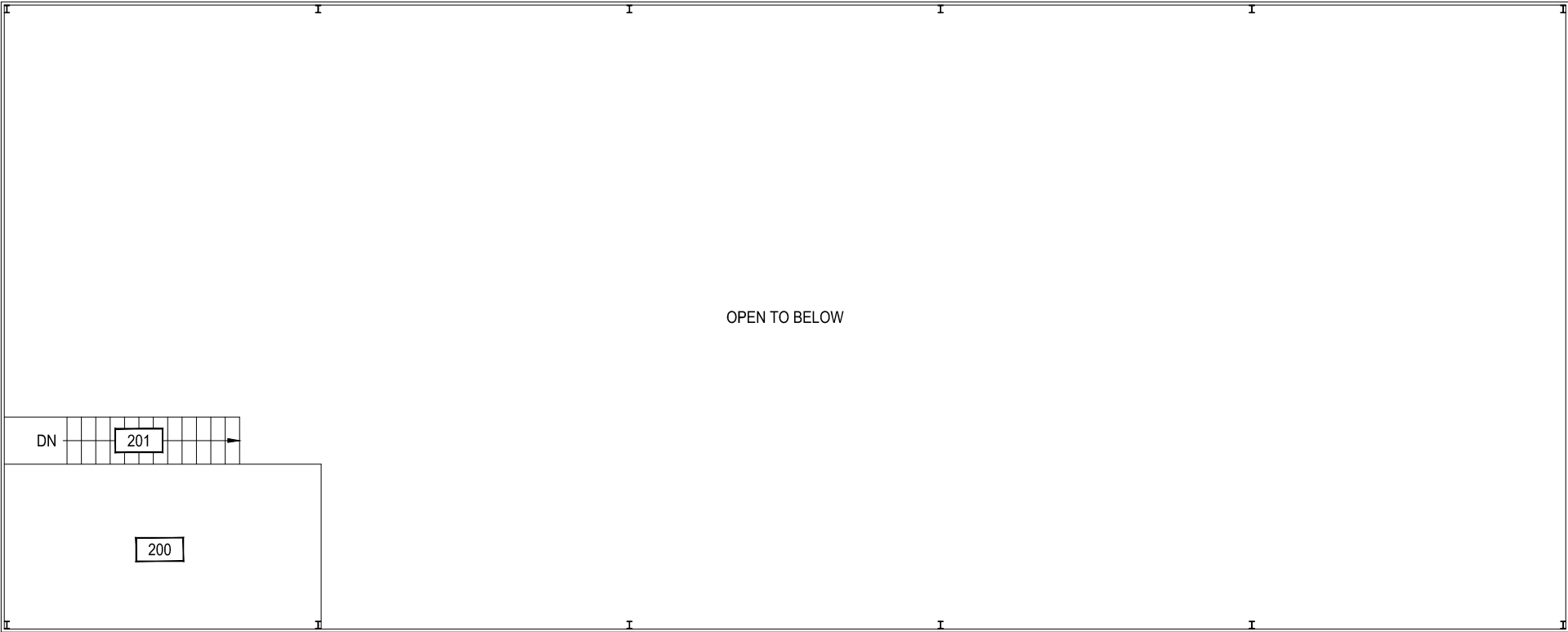


FIRST LEVEL
FS BUTLER BUILDING



M MONTANA
STATE UNIVERSITY
FACILITIES PLANNING,
DESIGN & CONSTRUCTION
BOZEMAN, MONTANA
PHONE: 406.994.4131 FAX: 406.994.6572

INDEX #	100
BUILDING #	319



OPEN TO BELOW

DN

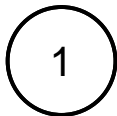
201

200

Oct04, 2012 - 4:23pm - 319_A2.dwg
H:\Plew Yard\Building Plan Book\



SCALE: 1" = 10'



SECOND LEVEL

FS BUTLER BUILDING



M MONTANA
STATE UNIVERSITY
FACILITIES PLANNING,
DESIGN & CONSTRUCTION
BOZEMAN, MONTANA
PHONE: 406.994.4131 FAX: 406.994.6572

INDEX #	100
BUILDING #	319