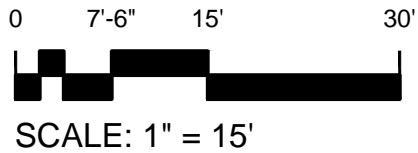
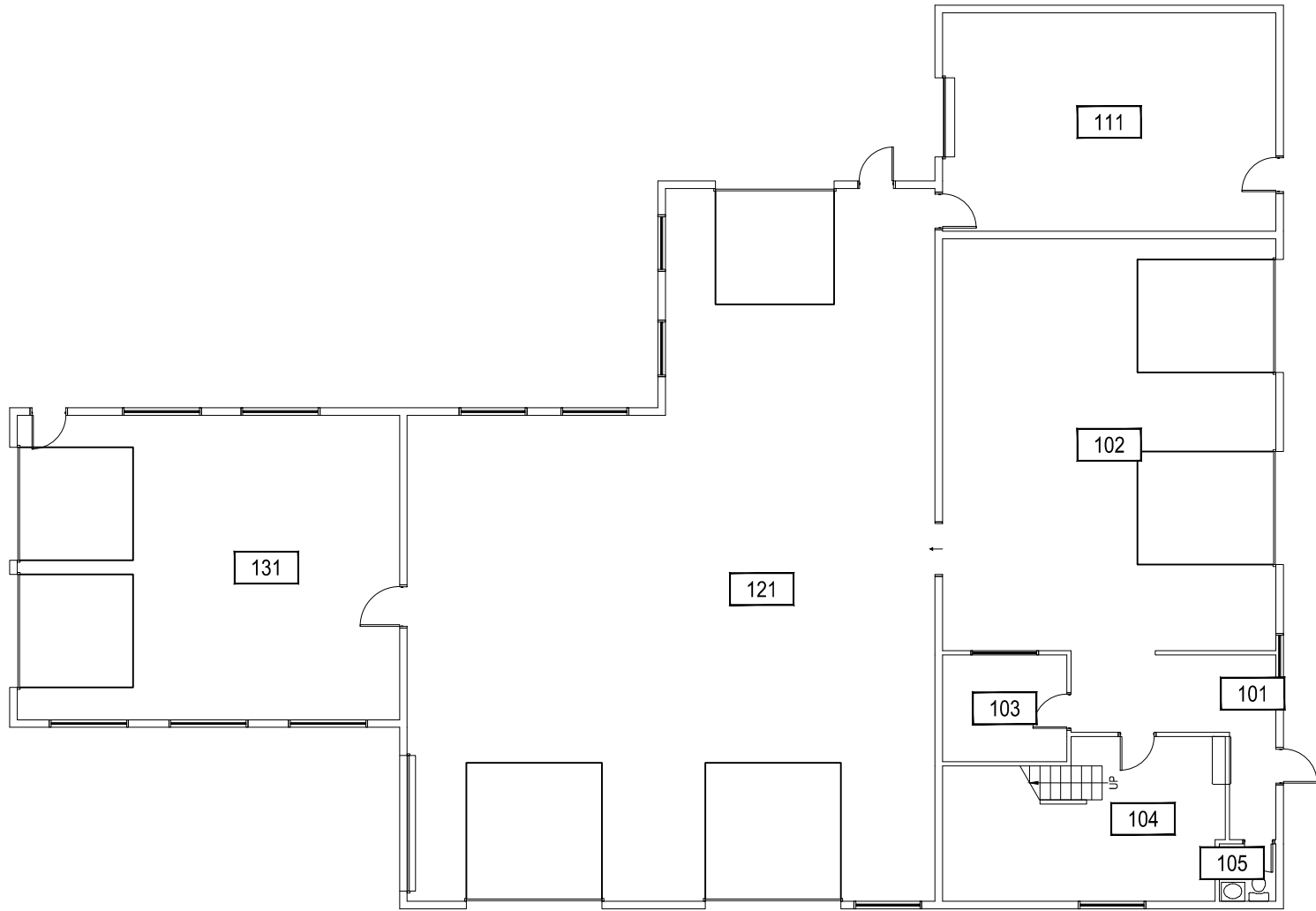


Oct05, 2012 - 12:52pm - 314\_A1.dwg  
H:\Plew Yard\Building Plan Book\



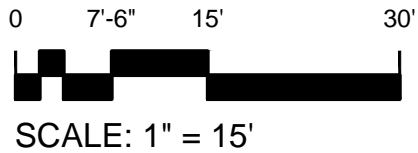
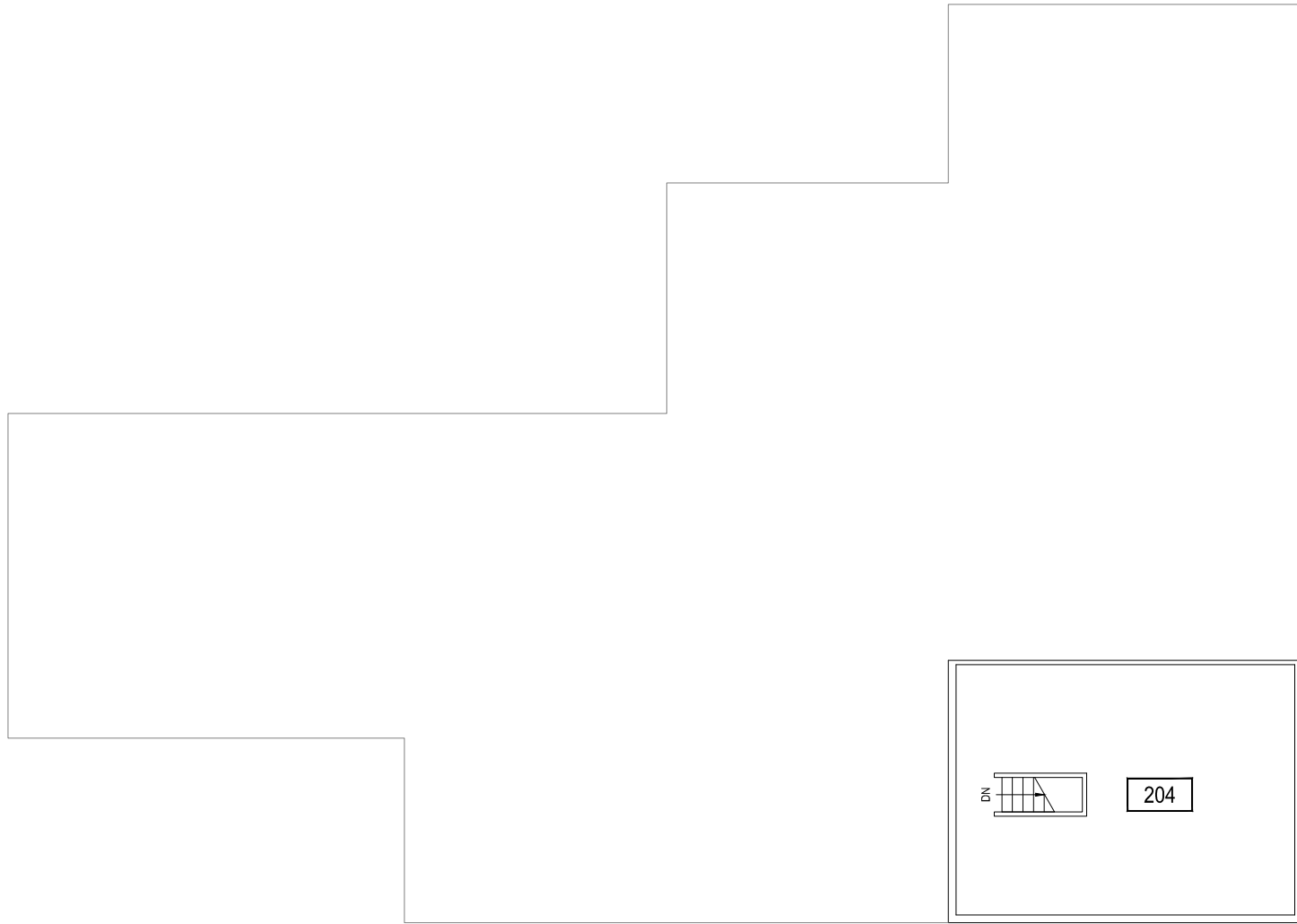
1 FIRST LEVEL  
FS MOTOR POOL GARAGE



**M** MONTANA STATE UNIVERSITY  
FACILITIES PLANNING,  
DESIGN & CONSTRUCTION  
BOZEMAN, MONTANA  
PHONE: 406.994.4131 FAX: 406.994.6572

INDEX #	<b>100</b>
BUILDING #	<b>314</b>

Oct05, 2012 - 12:52pm - 314\_A2.dwg  
H:\Plew Yard\Building Plan Book\



1 SECOND LEVEL  
FS MOTOR POOL GARAGE



**M** MONTANA  
STATE UNIVERSITY  
FACILITIES PLANNING,  
DESIGN & CONSTRUCTION  
BOZEMAN, MONTANA  
PHONE: 406.994.4131 FAX: 406.994.6572

INDEX #	<b>100</b>
BUILDING #	<b>314</b>