

SWINGLE  
HEALTH  
CENTER

063

063

063E4

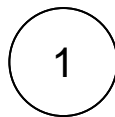
063

063S

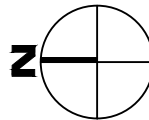
0 22'-6" 45' 90'



SCALE: 1" = 45'

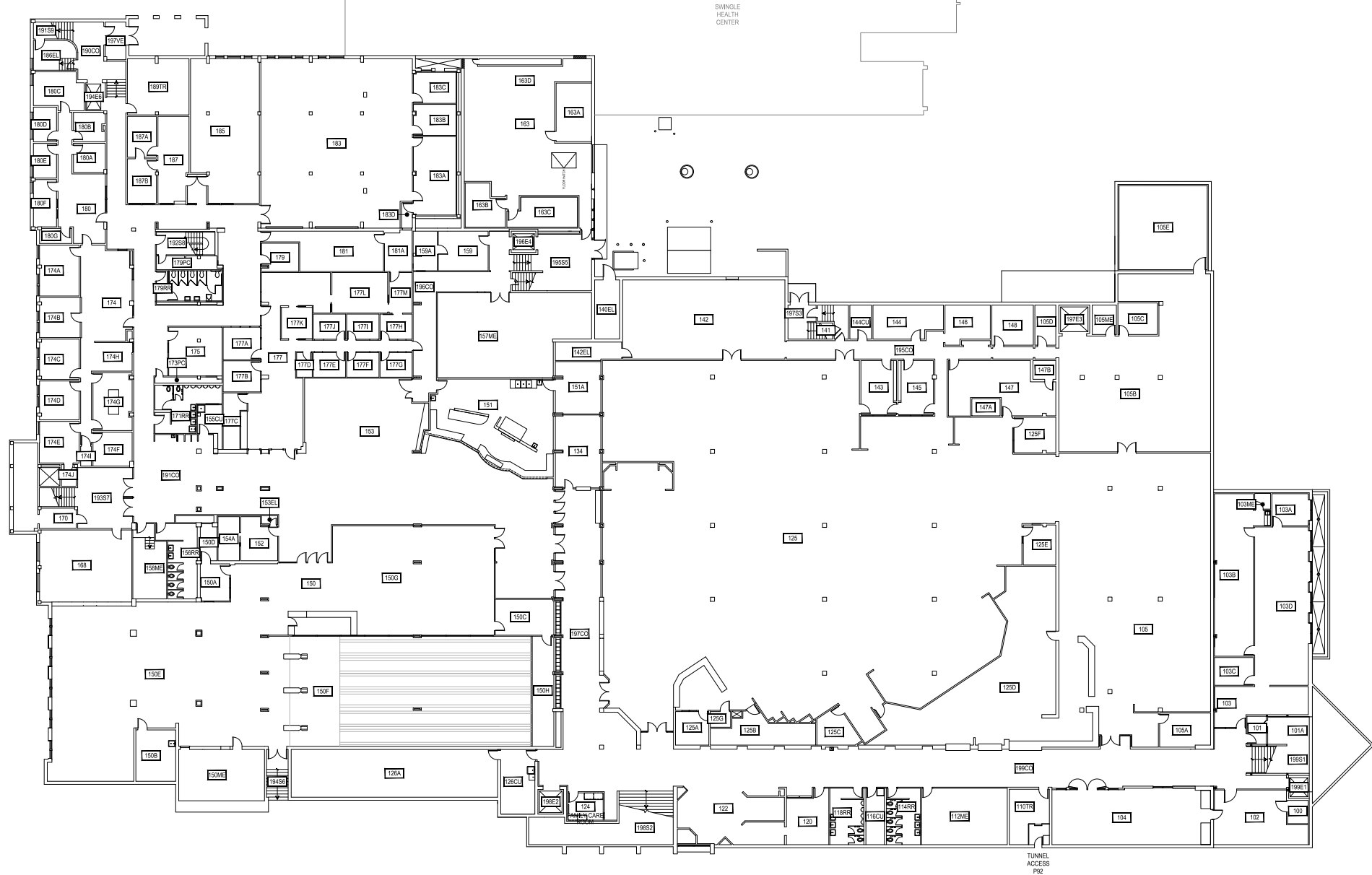


**BASEMENT LEVEL**  
STRAND UNION BUILDING

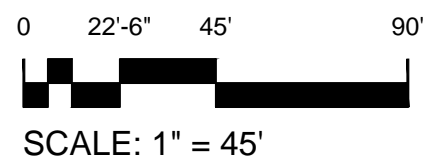


**M** MONTANA  
STATE UNIVERSITY  
CAMPUS PLANNING,  
DESIGN & CONSTRUCTION  
BOZEMAN, MONTANA  
PHONE: 406.994.5413 FAX: 406.994.5665

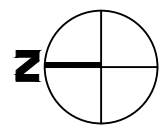
INDEX #	<b>12</b>
BUILDING #	<b>304</b>



Jun 02, 2015 - 7:15am - 304\_A1.dwg  
 C:\Users\gary.gramer\appdata\local\temp\AcPublish\_79441



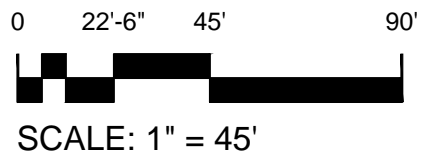
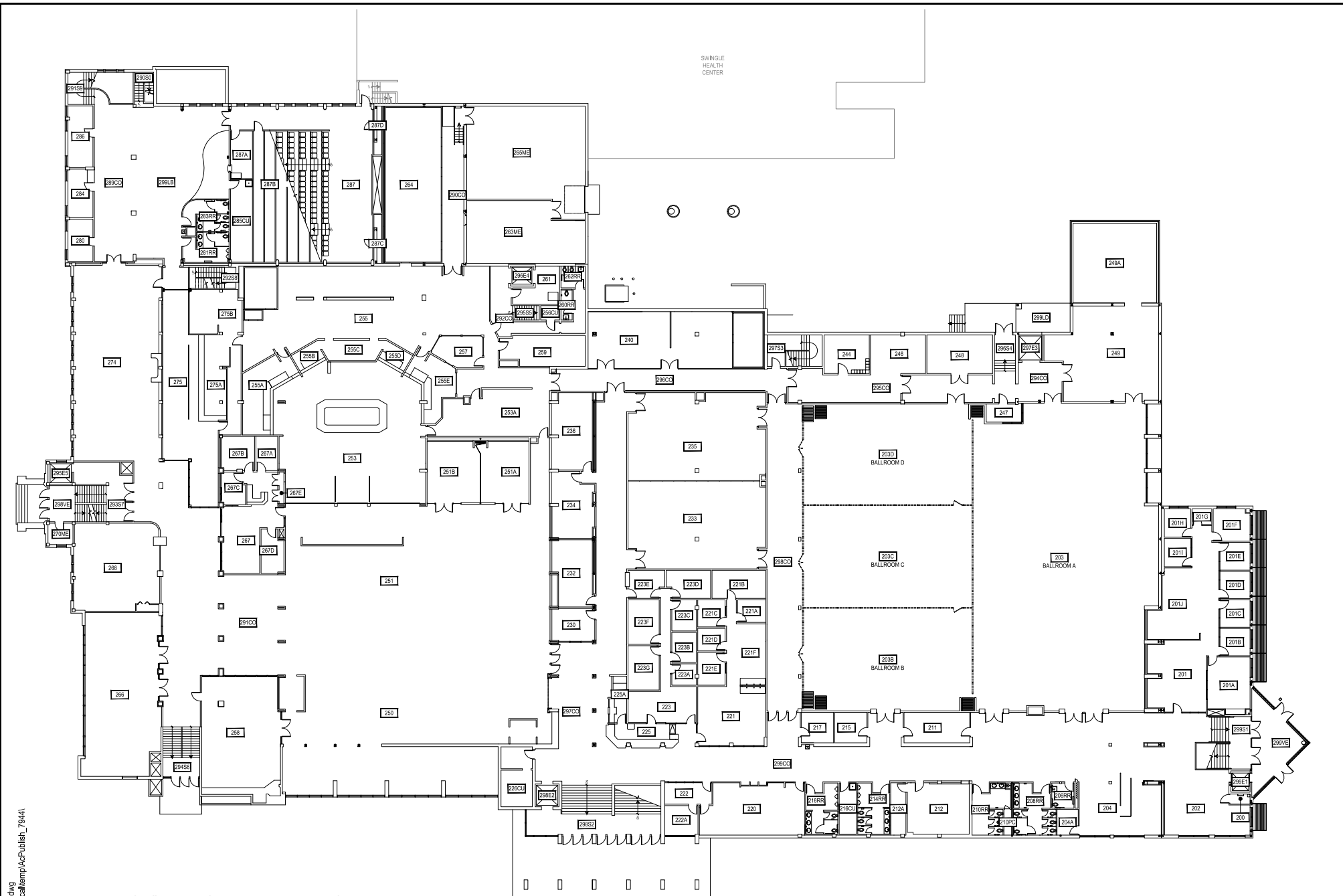
1
**FIRST LEVEL**  
 STRAND UNION BUILDING



**MONTANA STATE UNIVERSITY**  
 CAMPUS PLANNING,  
 DESIGN & CONSTRUCTION  
 BOZEMAN, MONTANA  
 PHONE: 406.994.5413 FAX: 406.994.5665

INDEX #	<b>12</b>
BUILDING #	<b>304</b>

Jun 02, 2015 - 7:15am - 304\_A2.dwg  
C:\Users\gary.gramer\appdata\local\temp\AcPublish\_79441



1 SECOND LEVEL  
STRAND UNION BUILDING

**M** MONTANA STATE UNIVERSITY  
CAMPUS PLANNING,  
DESIGN & CONSTRUCTION  
BOZEMAN, MONTANA  
PHONE: 406.994.5413 FAX: 406.994.5665

INDEX #  
**12**  
BUILDING #  
**304**



SWINGLE  
HEALTH  
CENTER

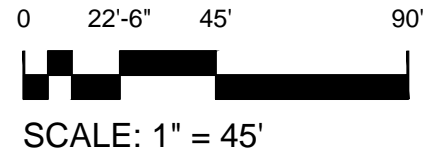
OPEN TO  
BELOW

OPEN TO  
BELOW

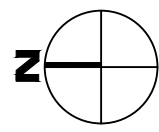
ATLIC  
HATCH

FLOOR  
HATCH

SEE 3RD LVL  
LANDING INSERT

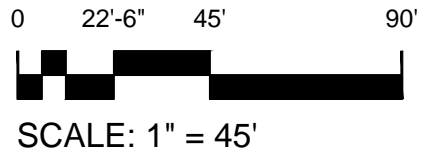
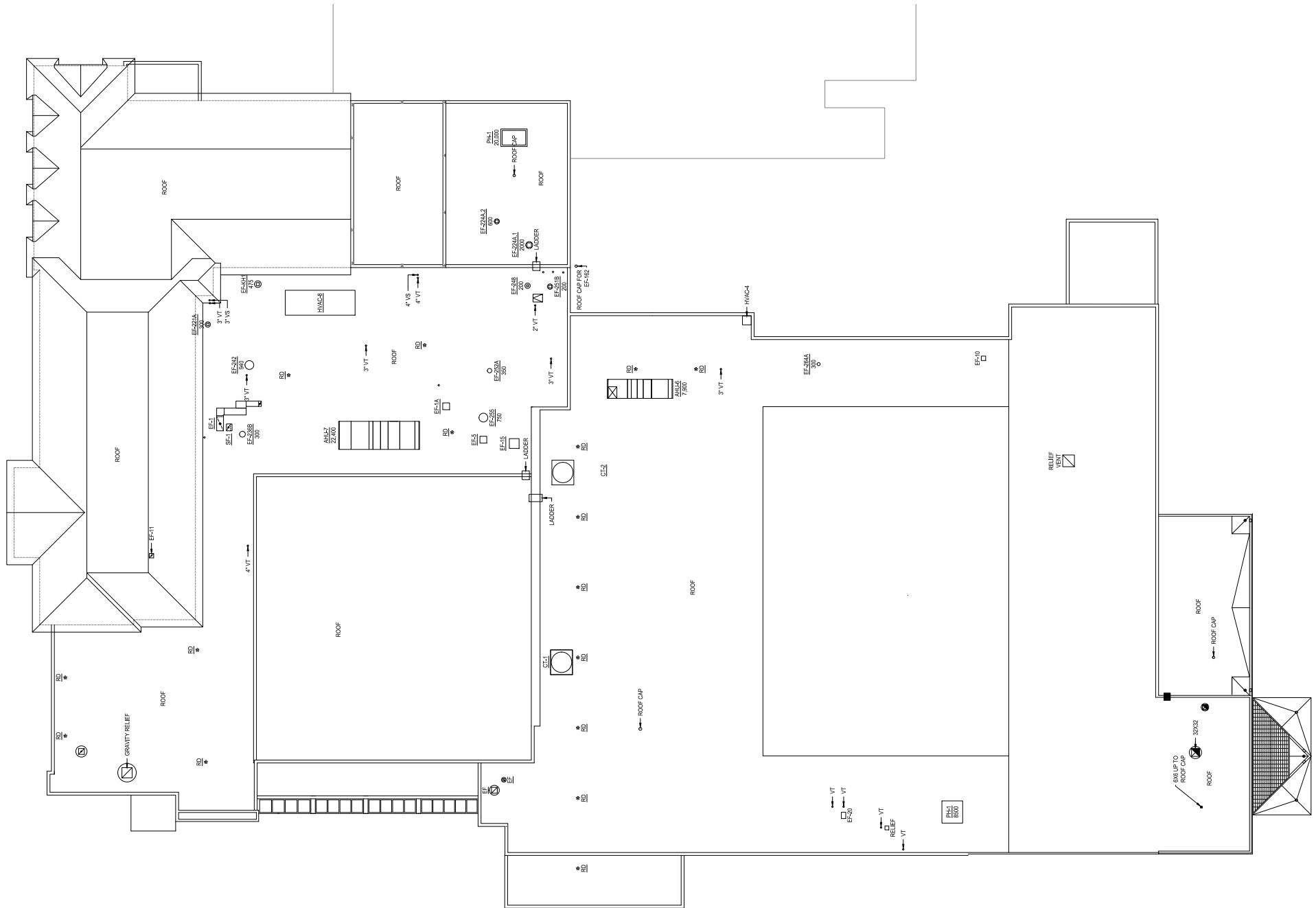


1 **THIRD LEVEL**  
STRAND UNION BUILDING



**M** MONTANA  
STATE UNIVERSITY  
CAMPUS PLANNING,  
DESIGN & CONSTRUCTION  
BOZEMAN, MONTANA  
PHONE: 406.994.5413 FAX: 406.994.5665

INDEX #  
**12**  
BUILDING #  
**304**



1 ROOF LEVEL  
 STRAND UNION BUILDING

**M MONTANA STATE UNIVERSITY**  
 CAMPUS PLANNING,  
 DESIGN & CONSTRUCTION  
 BOZEMAN, MONTANA  
 PHONE: 406.994.5413 FAX: 406.994.5665

INDEX #	12
BUILDING #	304