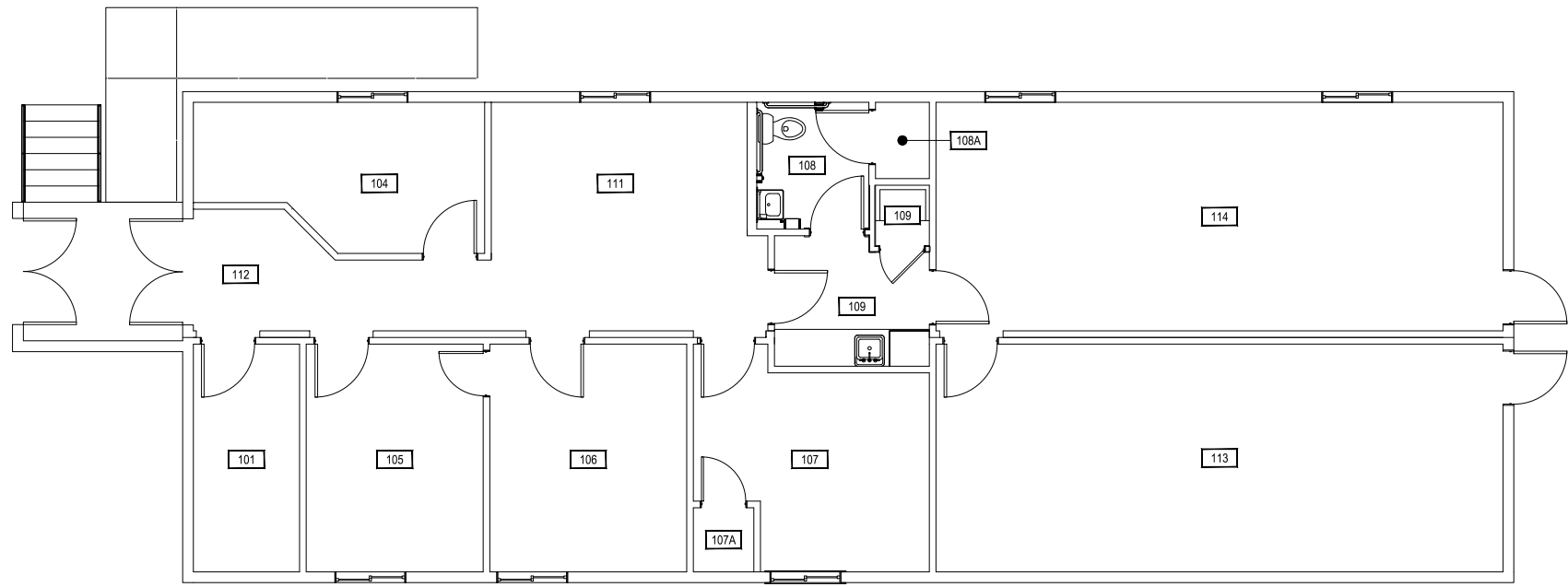


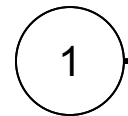
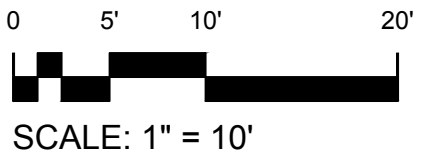
MARSH LAB



#2



Dec 20, 2016 - 9:46am - 150\_A1.dwg  
C:\Users\gary.granervappdata\local\temp\ac\publish\14864\



**FIRST LEVEL**  
MARSH LABORATORY MODULAR #1



**M** MONTANA STATE UNIVERSITY  
 CAMPUS PLANNING,  
 DESIGN & CONSTRUCTION  
 BOZEMAN, MONTANA  
 PHONE: 406.994.5413 FAX: 406.994.5665

INDEX #	<b>72</b>
BUILDING #	<b>150</b>