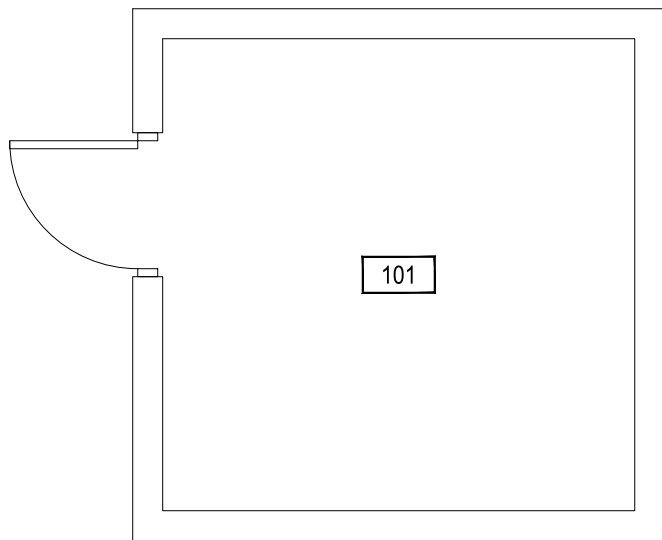
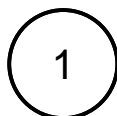


May 30, 2012 - 7:37am - 138107_A1_Storage Shed.dwg
H:\MOR-Tinsley Farm Complex\Building Plan - Book Copy\



SCALE: 1/4" = 1'



STORAGE SHED

MOR-TINSLEY FARM



M MONTANA
STATE UNIVERSITY
FACILITIES PLANNING,
DESIGN & CONSTRUCTION
BOZEMAN, MONTANA
PHONE: 406.994.4131 FAX: 406.994.6572

INDEX #	105
BUILDING #	138107