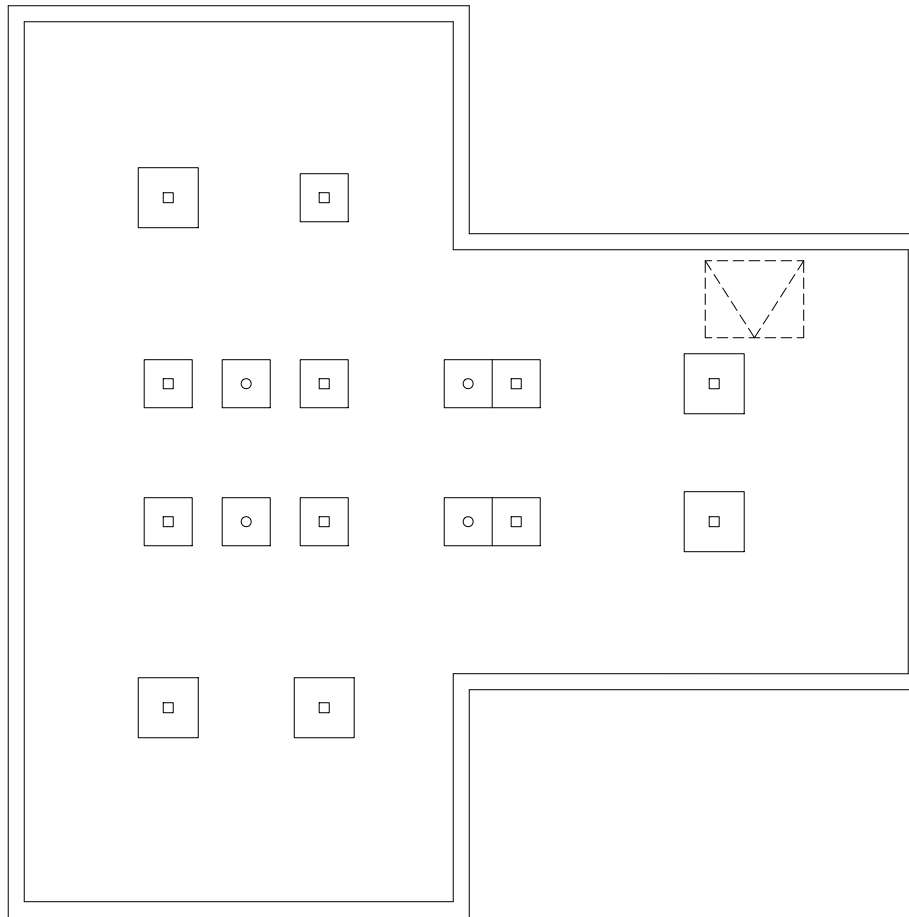
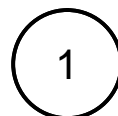


May 30, 2012 - 7:37am - 13810\_LAI\_Tinsley Homestead\_AF.dwg  
H:\MOR-Tinsley Farm Complex\Building Plan - Book Copy\



SCALE: 1/8" = 1'-0"



FOUNDATION LEVEL

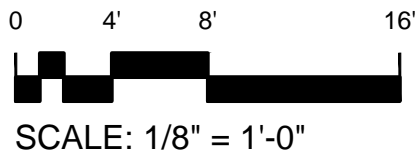
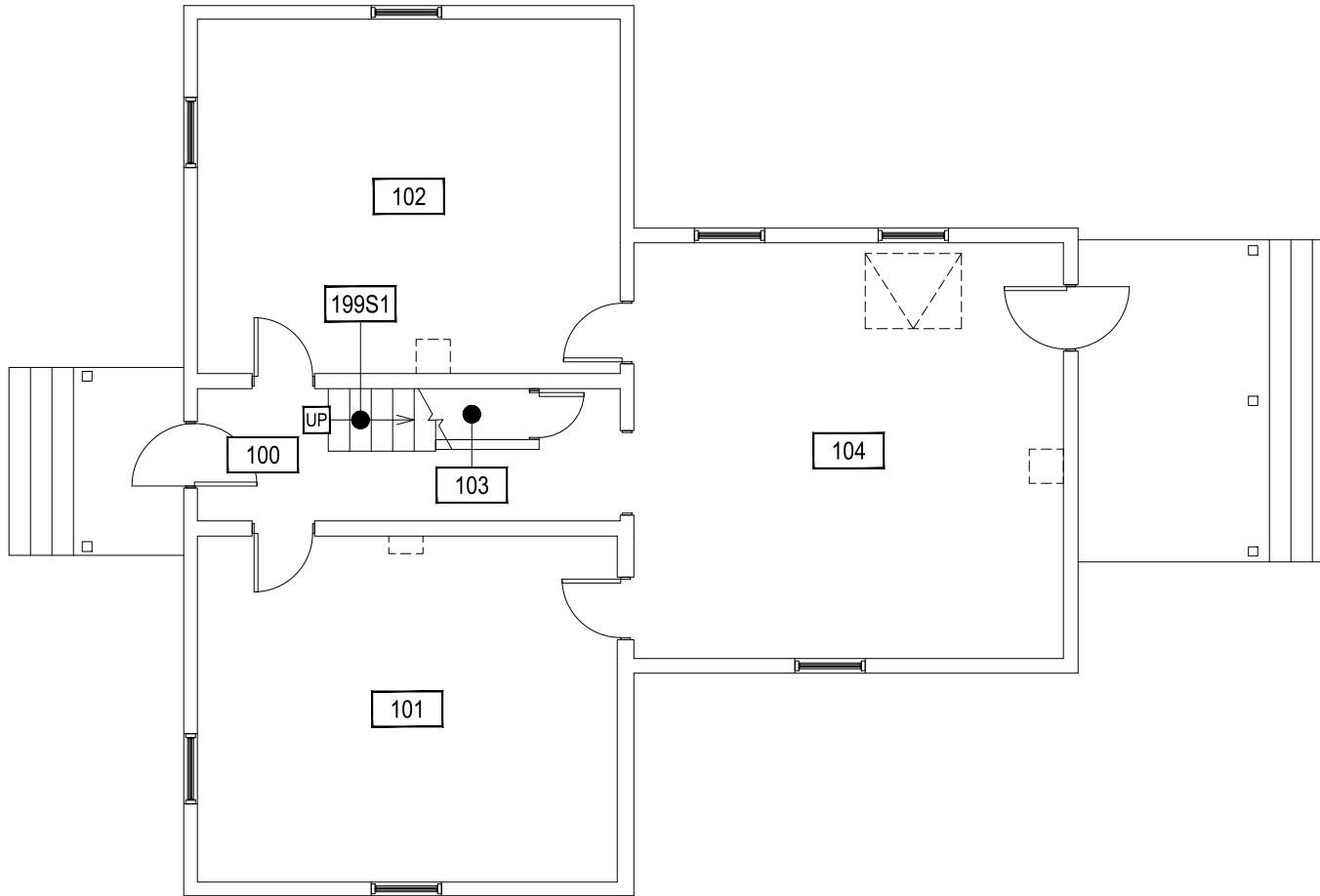
MOR-TINSLEY FARM - HOMESTEAD




**M** MONTANA  
STATE UNIVERSITY  
FACILITIES PLANNING,  
DESIGN & CONSTRUCTION  
BOZEMAN, MONTANA  
PHONE: 406.994.4131 FAX: 406.994.6572

INDEX #  
**105**  
BUILDING #  
**138101**

May 30, 2012 - 7:37am - 13810\_LAI\_Tinsley Homestead\_A1.dwg  
HE\MOR-Tinsley Farm Complex\Building Plan - Book Copy



1 **FIRST LEVEL**  
MOR-TINSLEY FARM - HOMESTEAD

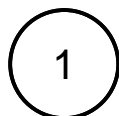
 <b>MONTANA STATE UNIVERSITY</b> FACILITIES PLANNING, DESIGN & CONSTRUCTION BOZEMAN, MONTANA PHONE: 406.994.4131 FAX: 406.994.6572	INDEX # <b>105</b>
	BUILDING # <b>138101</b>



May 30, 2012 - 7:37am - 13810\_LAI\_Tinsley Homestead\_A2.dwg  
 HE\MOR-Tinsley Farm Complex\Building Plan - Book Copy



SCALE: 1/8" = 1'-0"



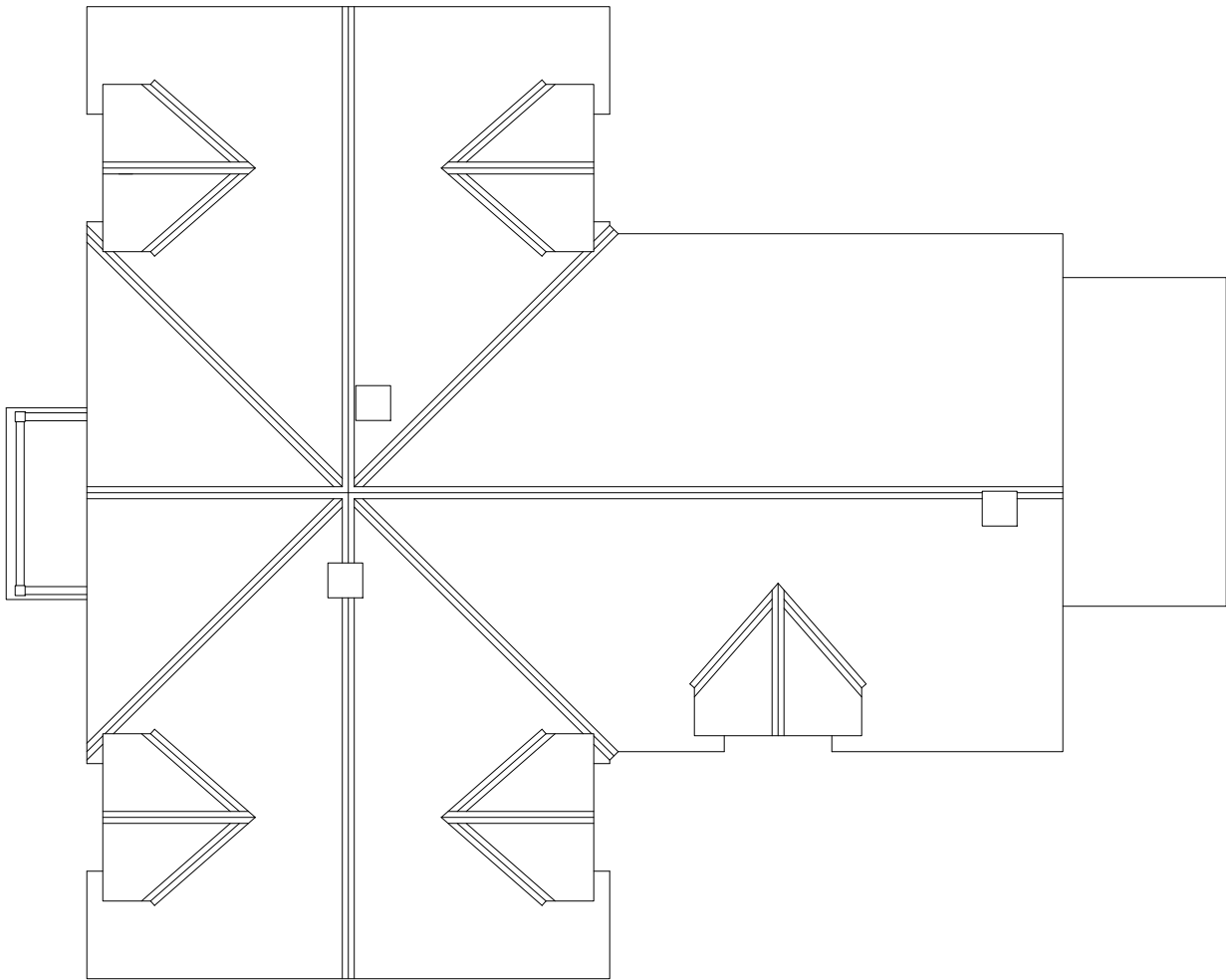
**SECOND LEVEL**

MOR-TINSLEY FARM - HOMESTEAD

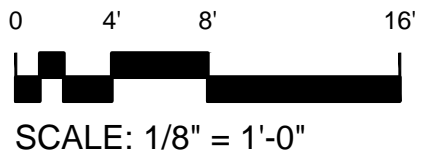


 <b>MONTANA</b> STATE UNIVERSITY	FACILITIES PLANNING, DESIGN & CONSTRUCTION BOZEMAN, MONTANA PHONE: 406.994.4131 FAX: 406.994.6572

INDEX #	<b>105</b>
BUILDING #	<b>138101</b>



May 30, 2012 - 7:37am - 13810\_LAI\_Tinsley Homestead\_AR.dwg  
 HE\MOR-Tinsley Farm Complex\Building Plan - Book Copy




**MONTANA**  
 STATE UNIVERSITY  
 FACILITIES PLANNING,  
 DESIGN & CONSTRUCTION  
 BOZEMAN, MONTANA  
 PHONE: 406.994.4131 FAX: 406.994.6572

INDEX #	<b>105</b>
BUILDING #	<b>138101</b>