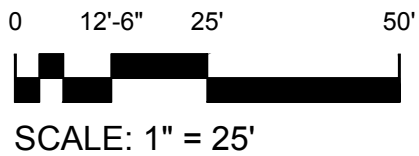
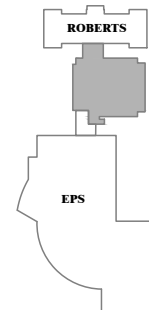
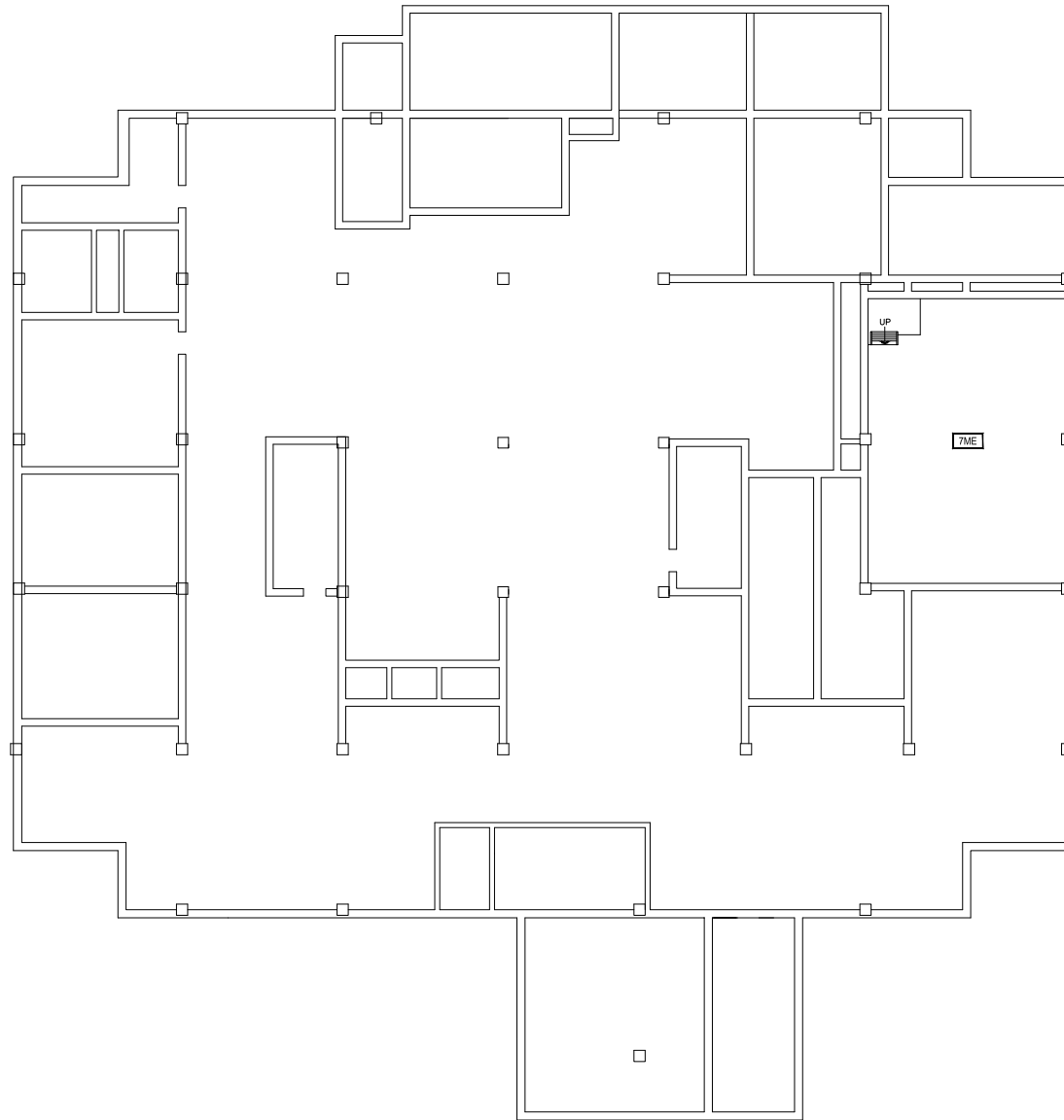


Oct 12, 2016 - 7:52am - 119_AB.dwg
H:\Cobleigh Hall\Building Plan - Book Copy\

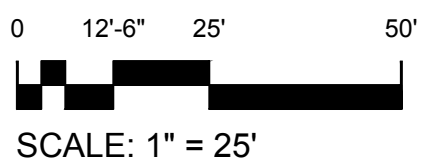
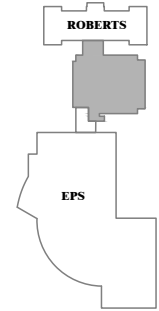
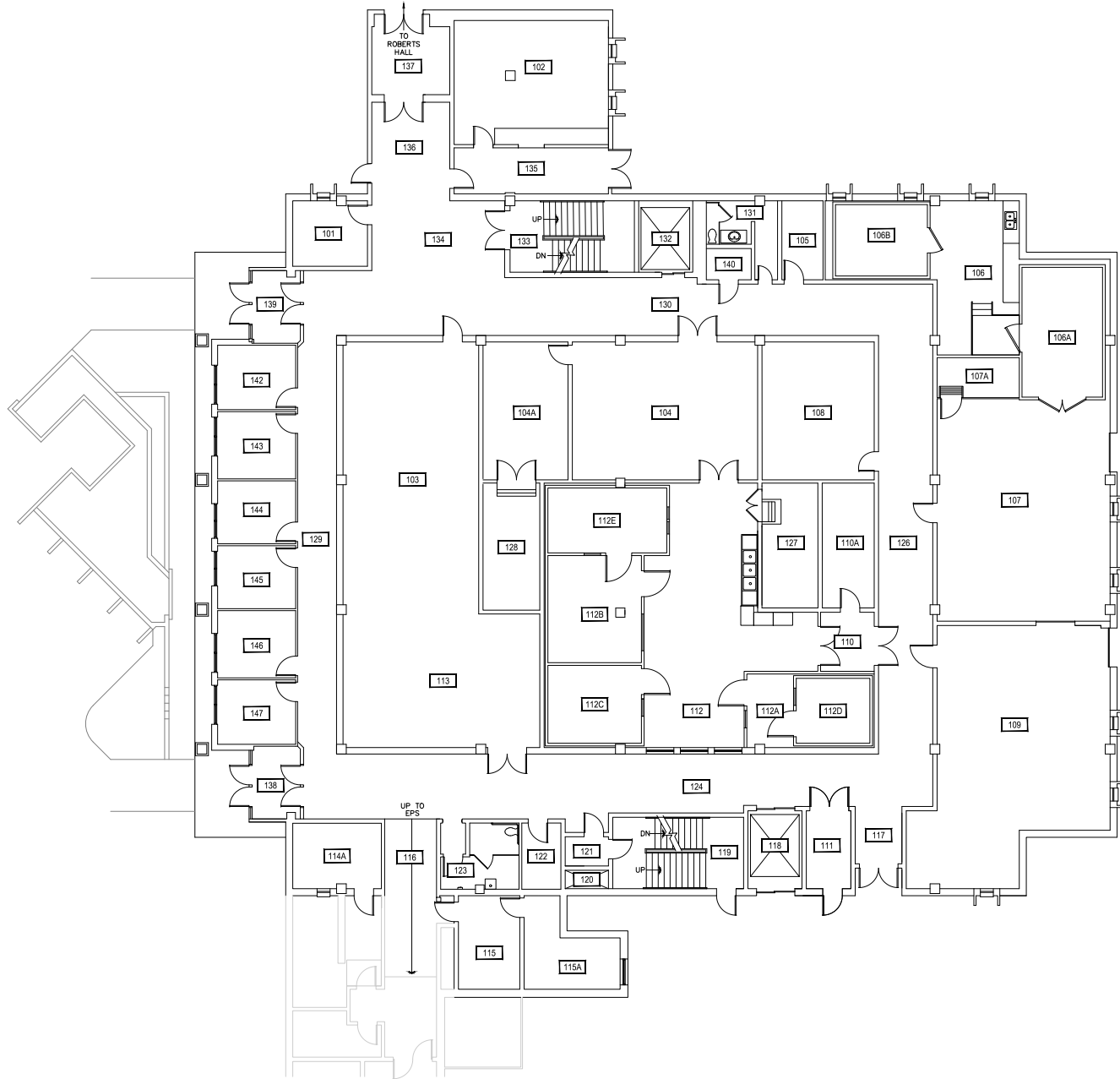


1 **BASEMENT LEVEL**
COBLEIGH HALL

M MONTANA STATE UNIVERSITY
CAMPUS PLANNING,
DESIGN & CONSTRUCTION
BOZEMAN, MONTANA
PHONE: 406.994.5413 FAX: 406.994.5665

INDEX #	50
BUILDING #	119

Oct 12, 2016 - 7:52am - 119_A1.dwg
H:\Cobleigh Hall\Building Plan - Book Copy\



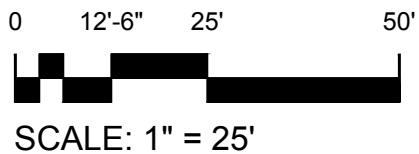
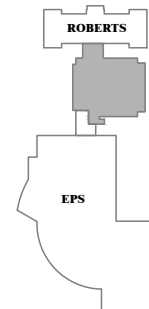
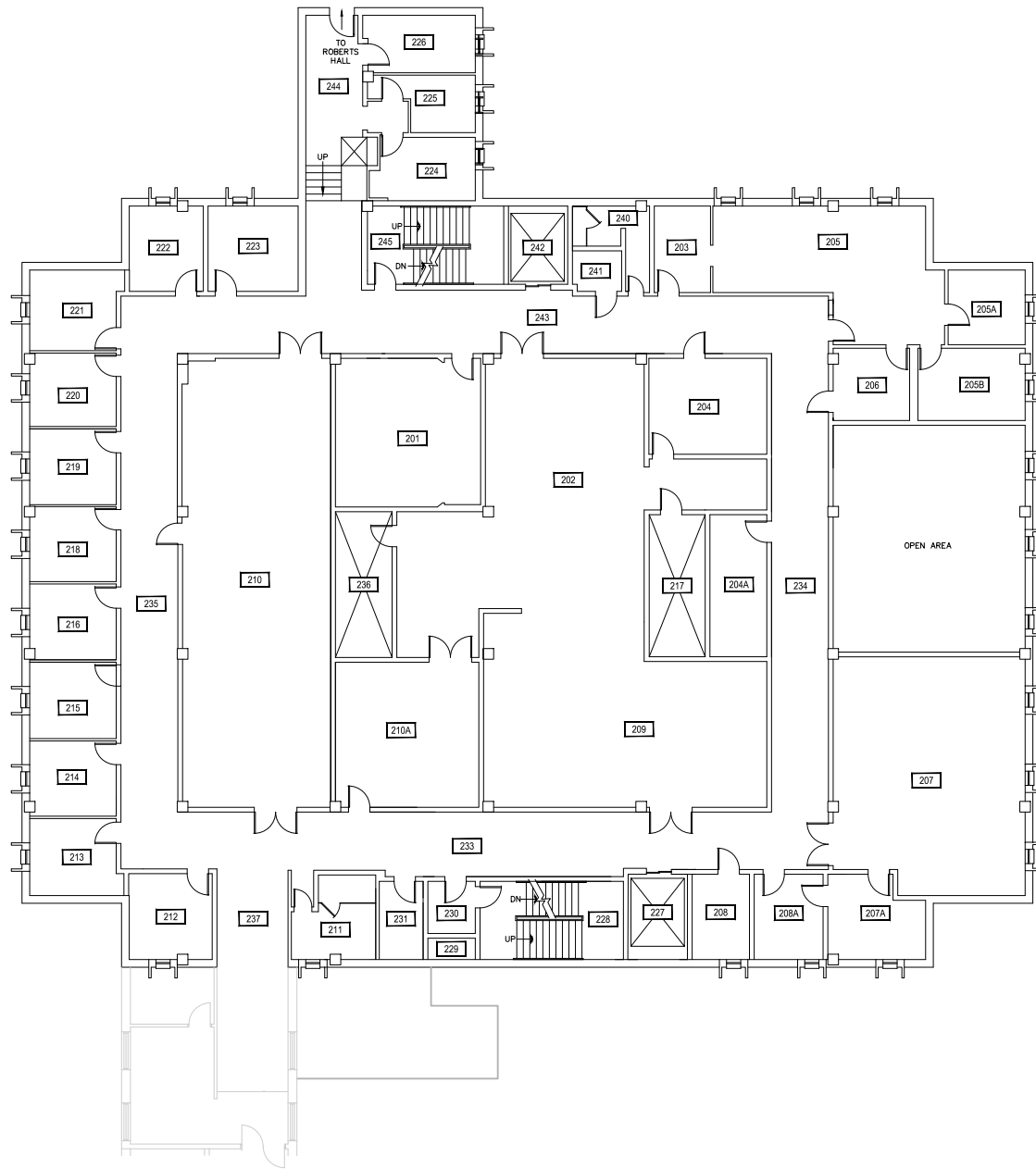
1 FIRST LEVEL
COBLEIGH HALL



M MONTANA STATE UNIVERSITY
CAMPUS PLANNING,
DESIGN & CONSTRUCTION
BOZEMAN, MONTANA
PHONE: 406.994.5413 FAX: 406.994.5665

INDEX #
50
BUILDING #
119

Oct 12, 2016 - 7:52am - 119_A2.dwg
H:\Cobleigh Hall\Building Plan - Book Copy\

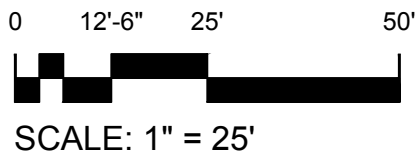
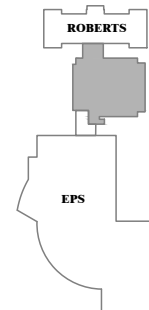
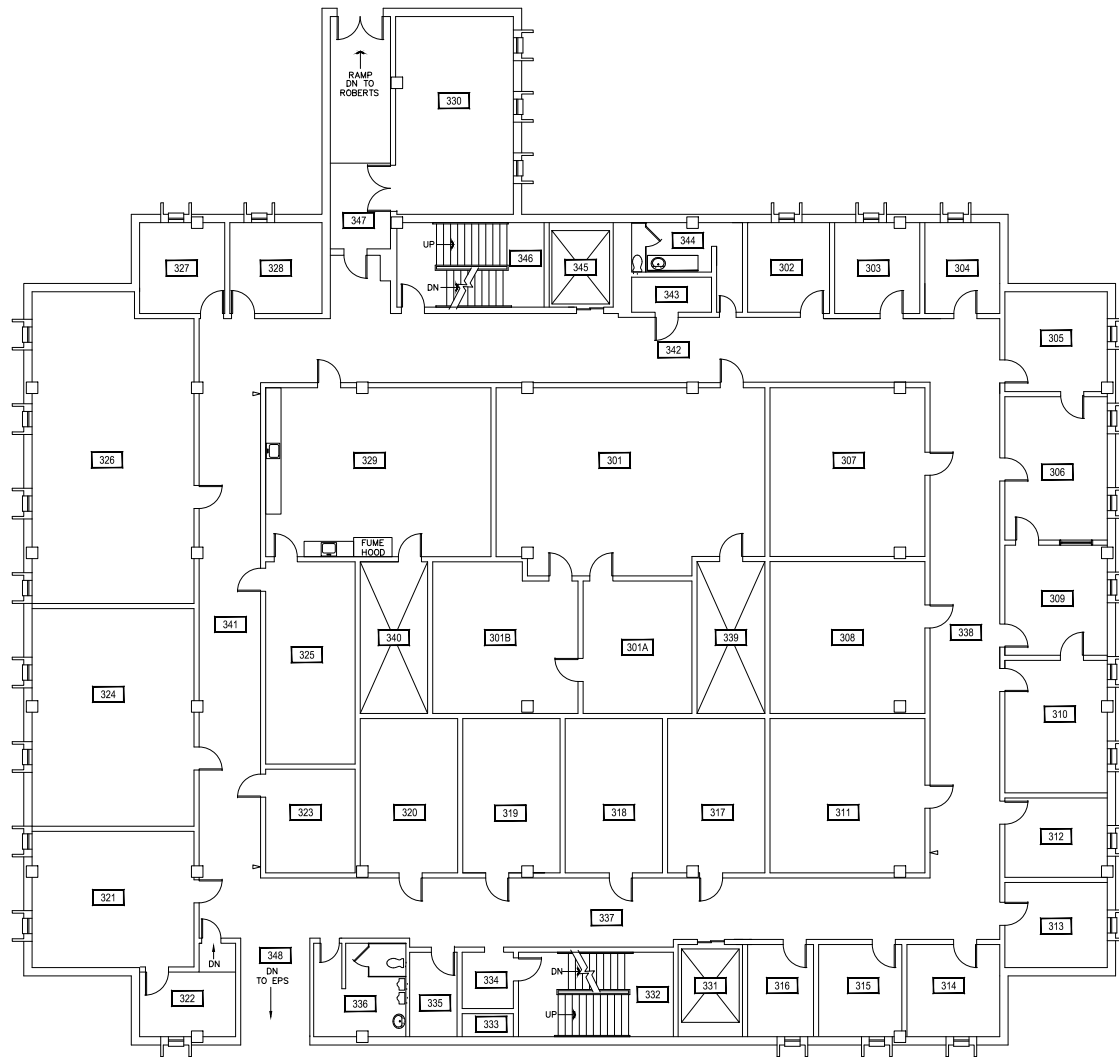


1 SECOND LEVEL
COBLEIGH HALL

M MONTANA STATE UNIVERSITY
CAMPUS PLANNING,
DESIGN & CONSTRUCTION
BOZEMAN, MONTANA
PHONE: 406.994.5413 FAX: 406.994.5665

INDEX #	50
BUILDING #	119

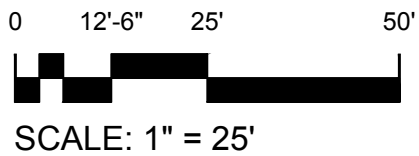
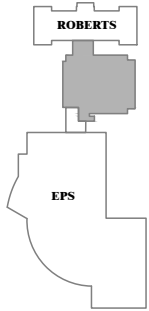
Oct 12, 2016 - 7:52am - 119_A3.dwg
H:\Cobleigh Hall\Building Plan - Book Copy\



1 **THIRD LEVEL**
COBLEIGH HALL

M MONTANA STATE UNIVERSITY
CAMPUS PLANNING,
DESIGN & CONSTRUCTION
BOZEMAN, MONTANA
PHONE: 406.994.5413 FAX: 406.994.5665

INDEX #
50
BUILDING #
119



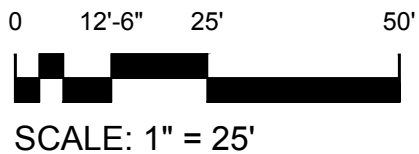
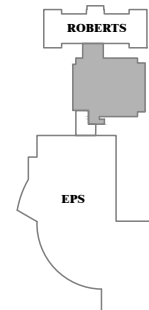
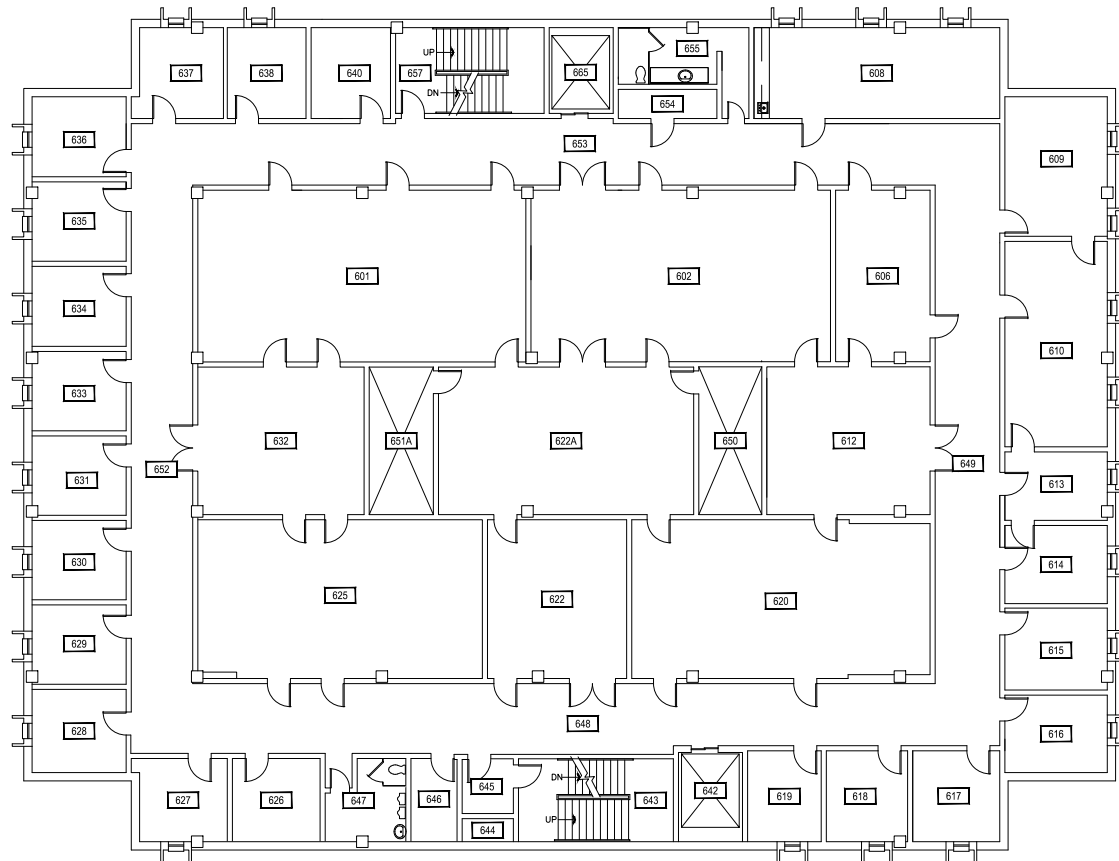
1
FOURTH LEVEL
 COBLEIGH HALL



Oct 12, 2016 - 7:52am - 119_A4.dwg
 H:\Cobleigh Hall\Building Plan - Book Copy\

MONTANA STATE UNIVERSITY
 CAMPUS PLANNING,
 DESIGN & CONSTRUCTION
 BOZEMAN, MONTANA
 PHONE: 406.994.5413 FAX: 406.994.5665

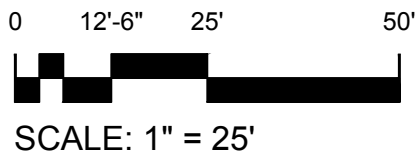
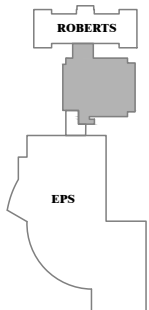
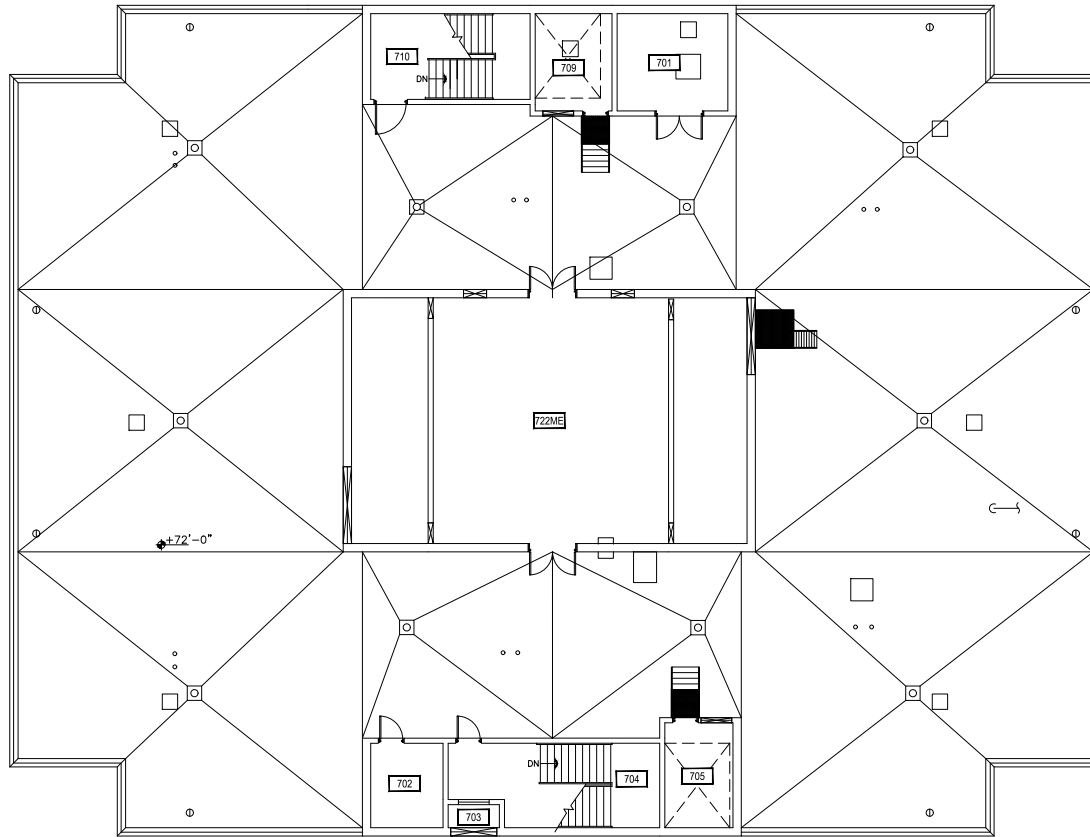
INDEX #	50
BUILDING #	119



1 SIXTH LEVEL
COBLEIGH HALL

M MONTANA
STATE UNIVERSITY
CAMPUS PLANNING,
DESIGN & CONSTRUCTION
BOZEMAN, MONTANA
PHONE: 406.994.5413 FAX: 406.994.5665

INDEX #
50
BUILDING #
119



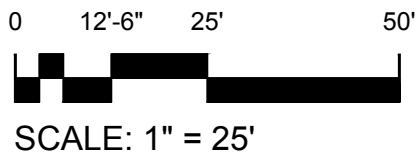
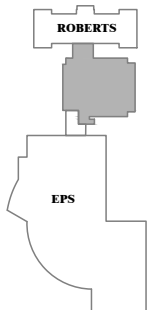
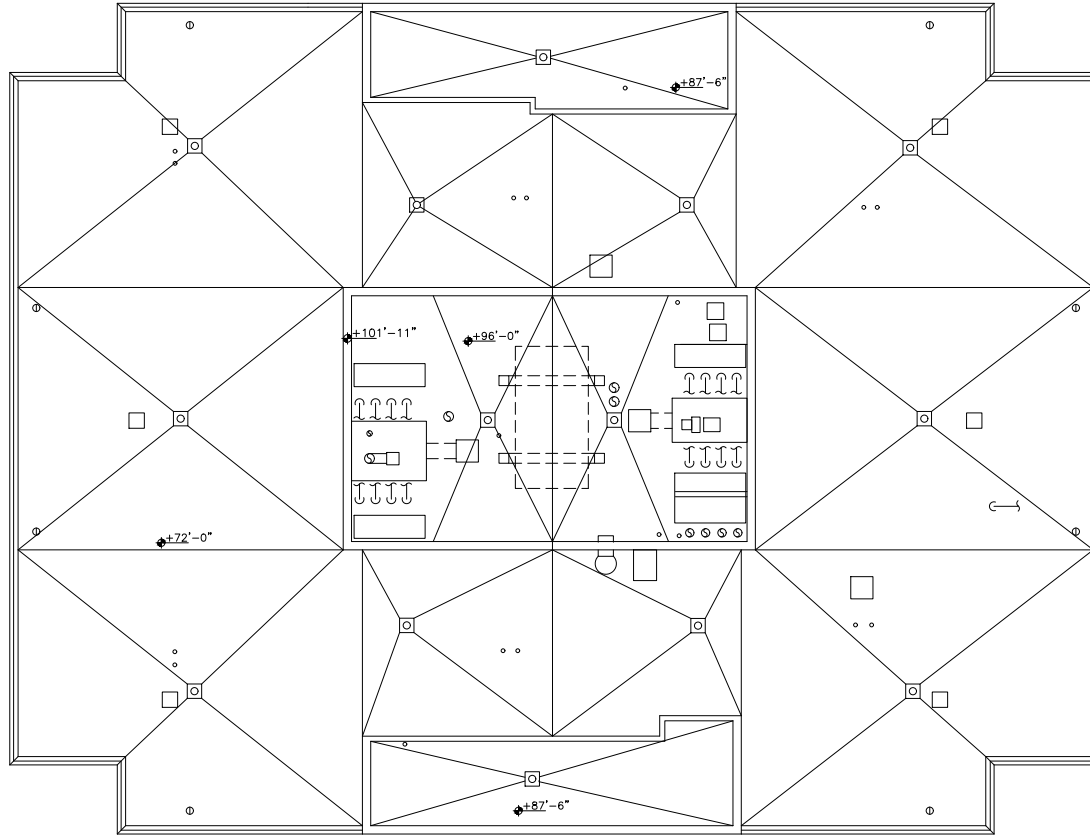
1
PENTHOUSE LEVEL
 COBLEIGH HALL



Oct 12, 2016 - 7:52am - 119_AP.dwg
 H:\Cobleigh Hall\Building Plan - Book Copy\

MONTANA STATE UNIVERSITY
 CAMPUS PLANNING,
 DESIGN & CONSTRUCTION
 BOZEMAN, MONTANA
 PHONE: 406.994.5413 FAX: 406.994.5665

INDEX #	50
BUILDING #	119



1
ROOF LEVEL
 COBLEIGH HALL

MONTANA STATE UNIVERSITY
 CAMPUS PLANNING,
 DESIGN & CONSTRUCTION
 BOZEMAN, MONTANA
 PHONE: 406.994.5413 FAX: 406.994.5665

INDEX #	50
BUILDING #	119

Oct 12, 2016 - 7:52am - 119_AR.dwg
 H:\Cobleigh Hall\Building Plan - Book Copy\