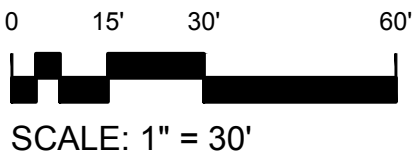
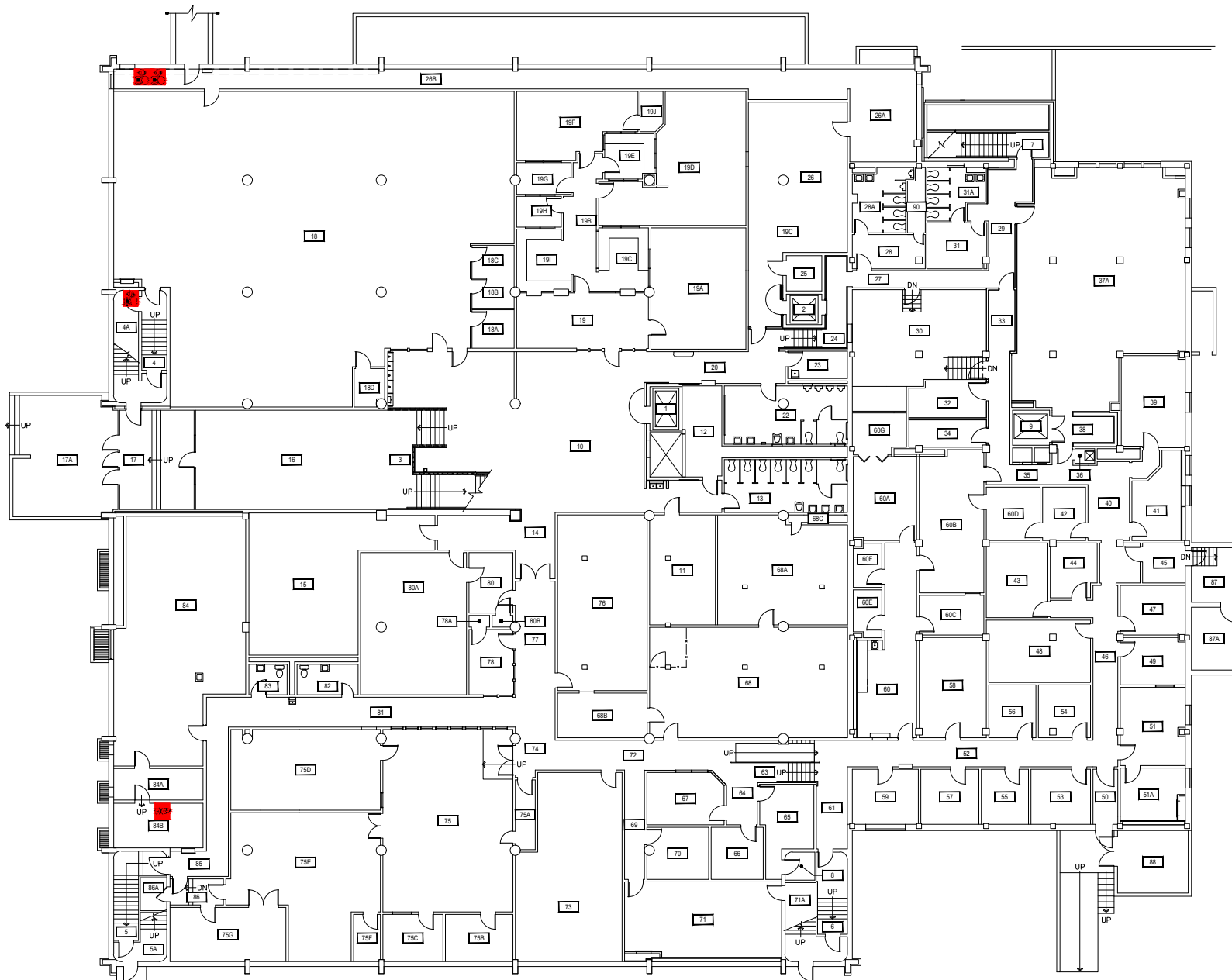


Jan 17, 2018 - 4:31 pm - 111\_AB.dwg  
E:\Renne Library\Building Plan - Book Copy\



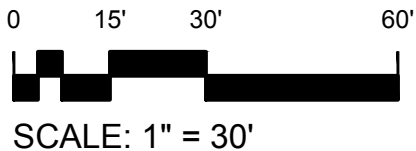
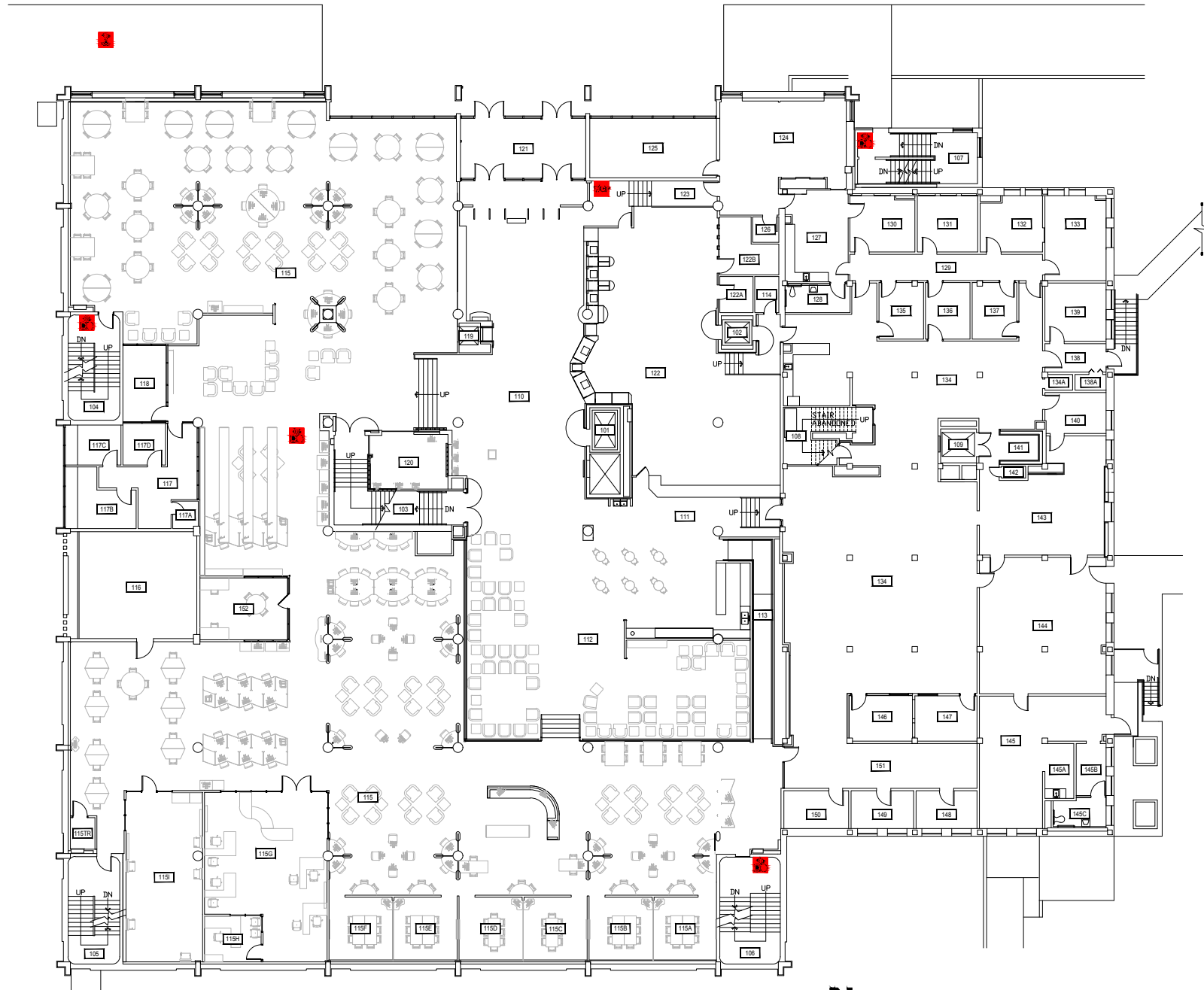
1

**BASEMENT LEVEL**  
RENNE LIBRARY



**M** MONTANA  
STATE UNIVERSITY  
CAMPUS PLANNING,  
DESIGN & CONSTRUCTION  
BOZEMAN, MONTANA  
PHONE: 406.994.4131 FAX: 406.994.6572

INDEX #  
**13**  
BUILDING #  
**111**



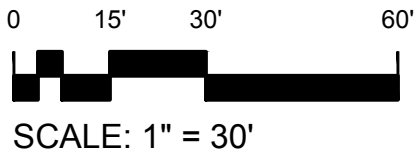
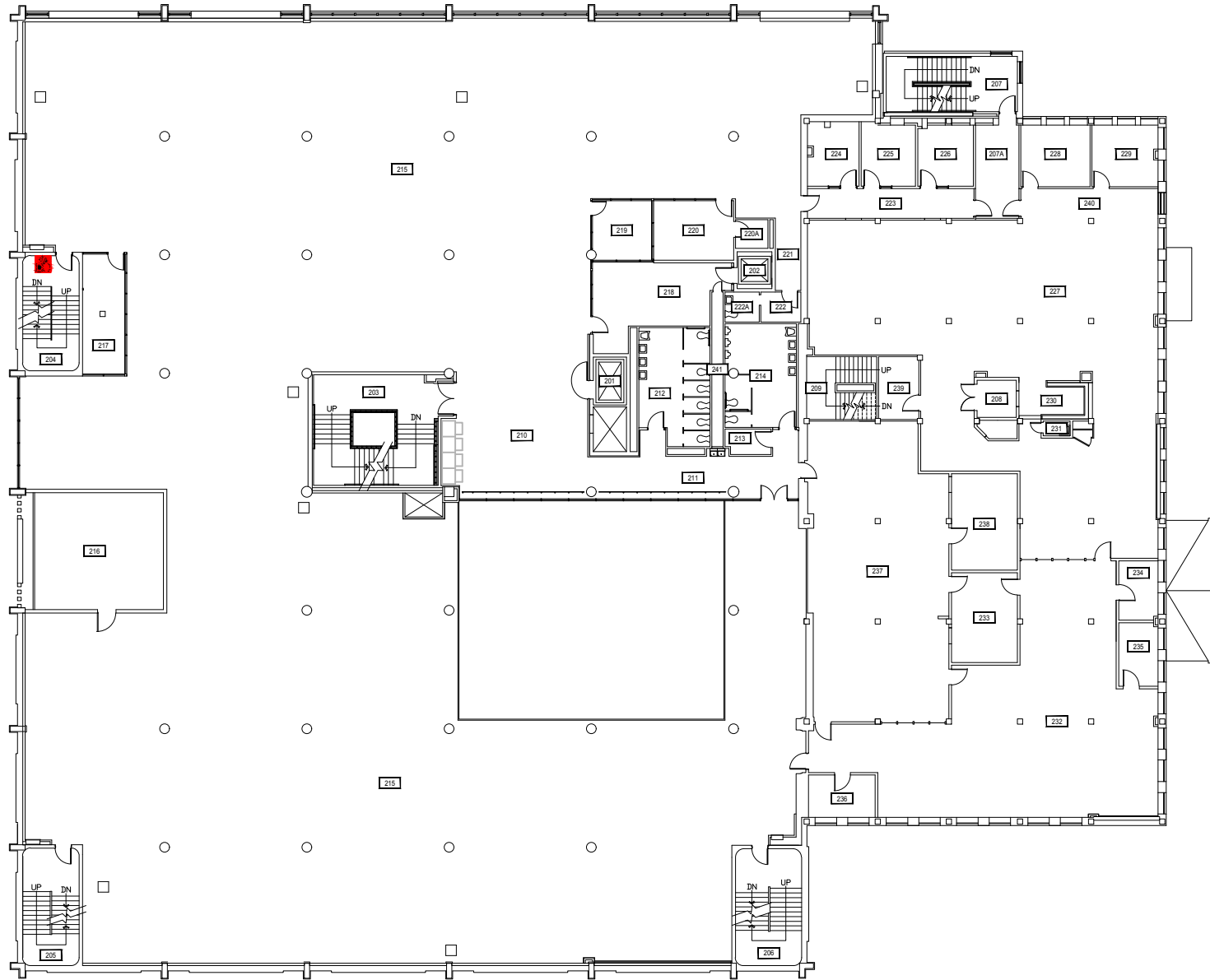
1

**FIRST LEVEL**  
RENNE LIBRARY



**M MONTANA STATE UNIVERSITY**  
CAMPUS PLANNING,  
DESIGN & CONSTRUCTION  
BOZEMAN, MONTANA  
PHONE: 406.994.4131 FAX: 406.994.6572

INDEX #  
**13**  
BUILDING #  
**111**



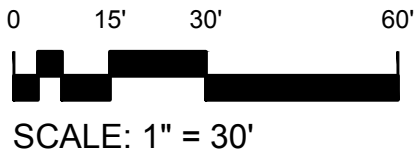
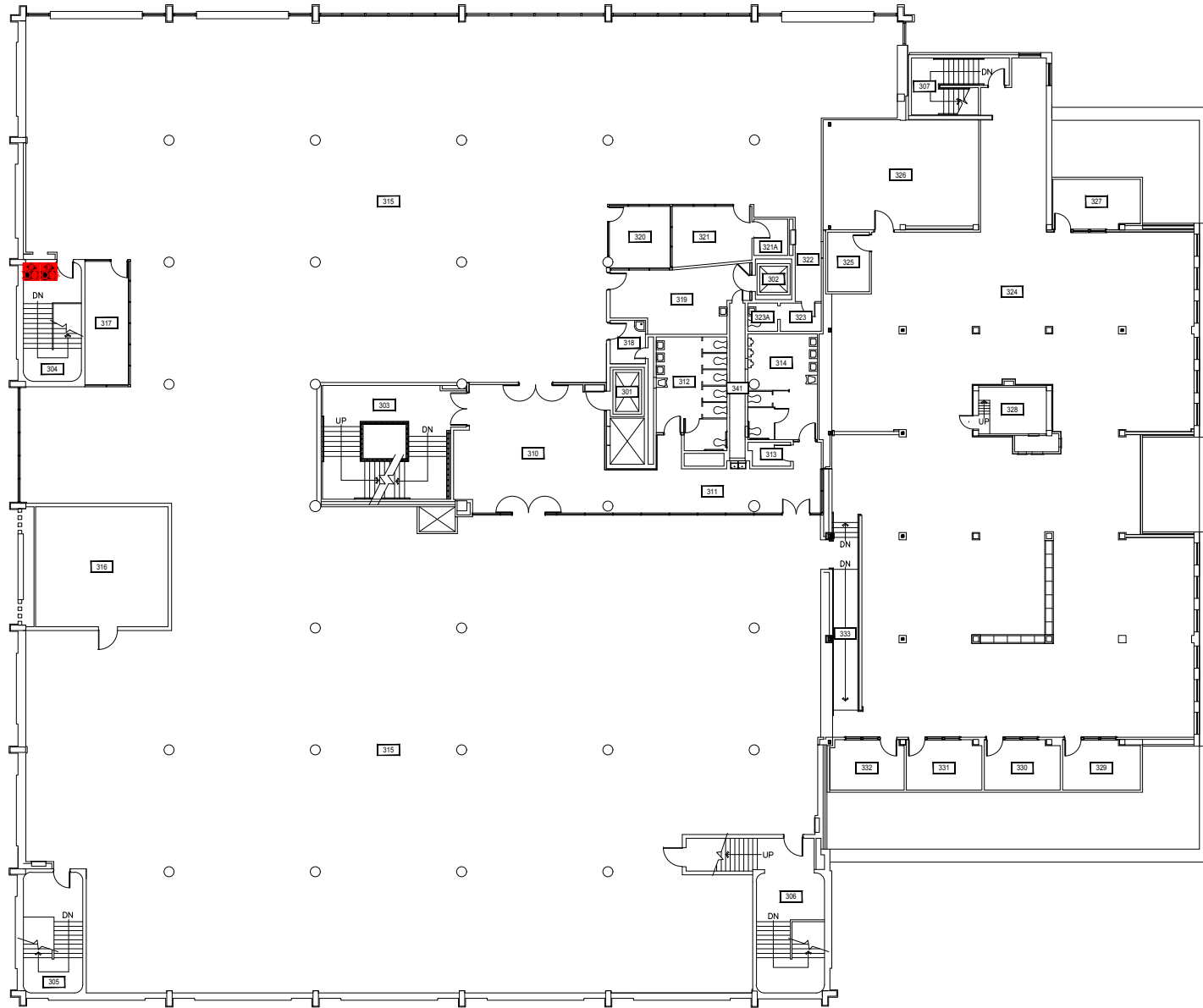
1

**SECOND LEVEL**  
RENNE LIBRARY



**M** MONTANA  
STATE UNIVERSITY  
CAMPUS PLANNING,  
DESIGN & CONSTRUCTION  
BOZEMAN, MONTANA  
PHONE: 406.994.4131 FAX: 406.994.6572

|            |            |
|------------|------------|
| INDEX #    | <b>13</b>  |
| BUILDING # | <b>111</b> |



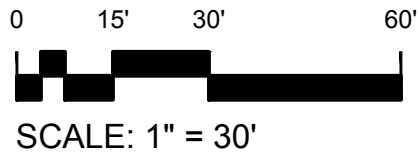
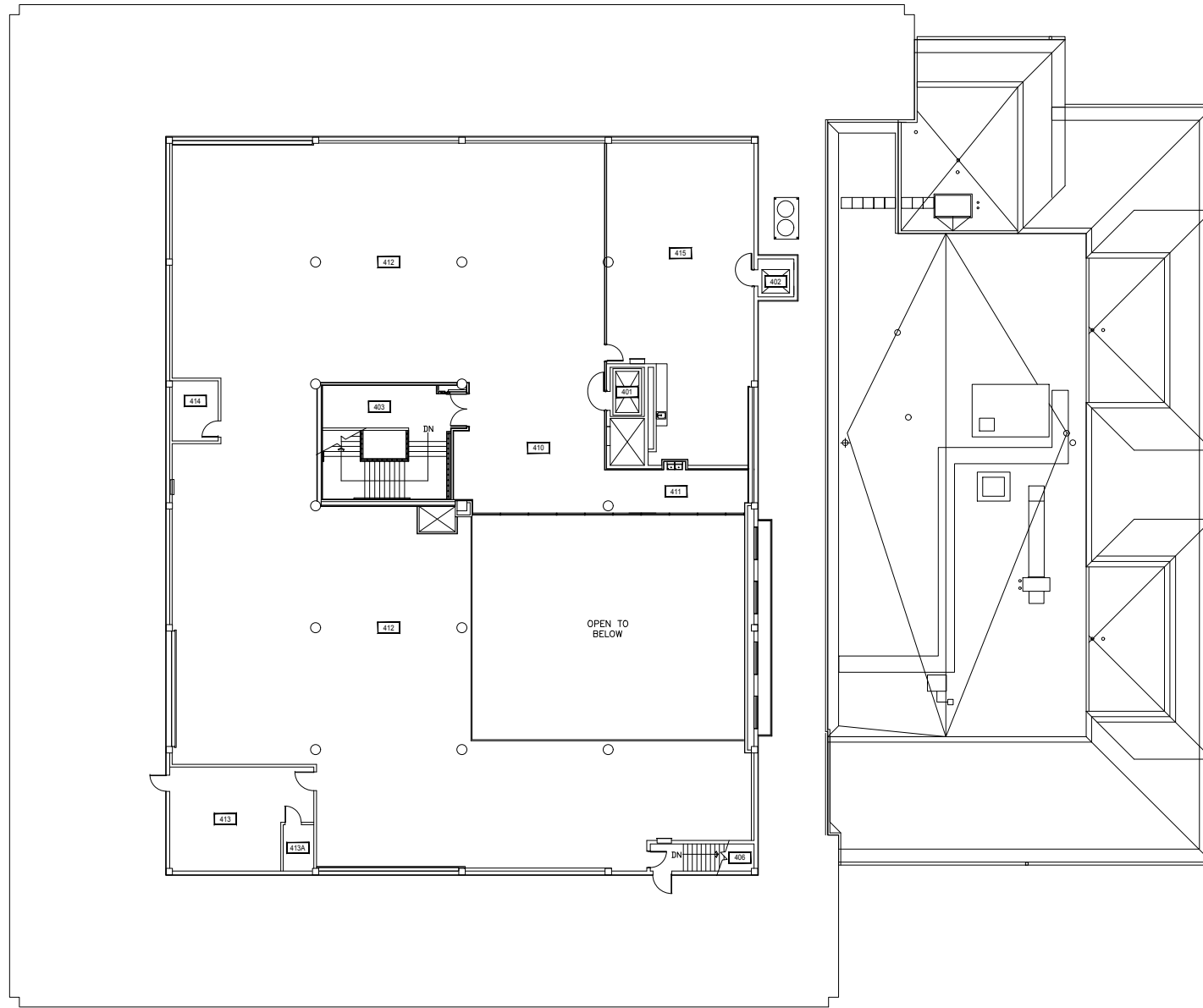
1

**THIRD LEVEL**  
RENNE LIBRARY



**M** MONTANA  
STATE UNIVERSITY  
CAMPUS PLANNING,  
DESIGN & CONSTRUCTION  
BOZEMAN, MONTANA  
PHONE: 406.994.4131 FAX: 406.994.6572

|            |            |
|------------|------------|
| INDEX #    | <b>13</b>  |
| BUILDING # | <b>111</b> |



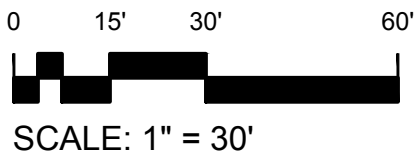
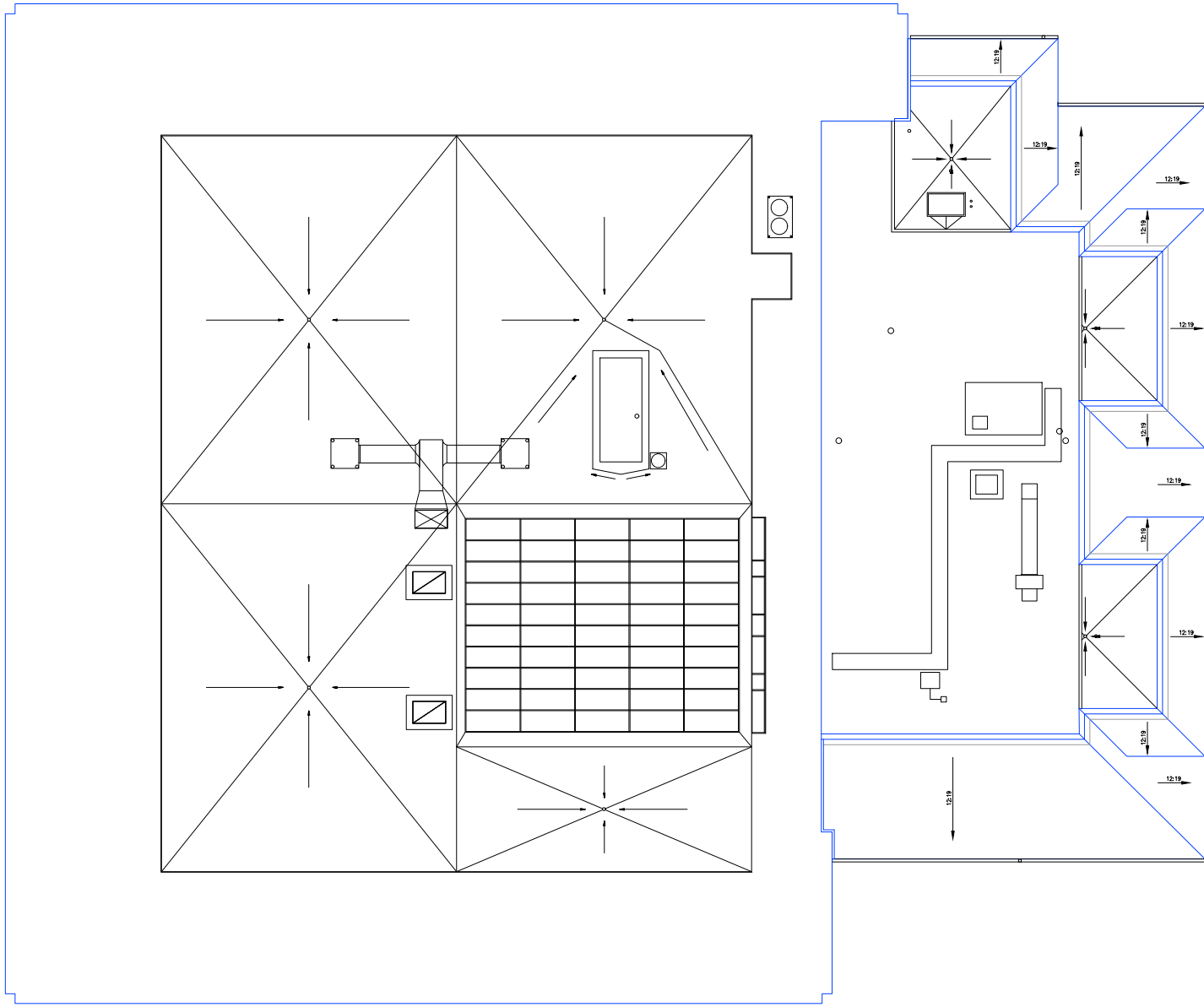
1

**FOURTH LEVEL**  
RENNE LIBRARY



**M** MONTANA  
STATE UNIVERSITY  
CAMPUS PLANNING,  
DESIGN & CONSTRUCTION  
BOZEMAN, MONTANA  
PHONE: 406.994.4131 FAX: 406.994.6572

|            |            |
|------------|------------|
| INDEX #    | <b>13</b>  |
| BUILDING # | <b>111</b> |



1

ROOF LEVEL  
RENNE LIBRARY



**M** MONTANA  
STATE UNIVERSITY  
CAMPUS PLANNING,  
DESIGN & CONSTRUCTION  
BOZEMAN, MONTANA  
PHONE: 406.994.4131 FAX: 406.994.6572

INDEX #  
**13**  
BUILDING #  
**111**