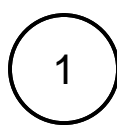
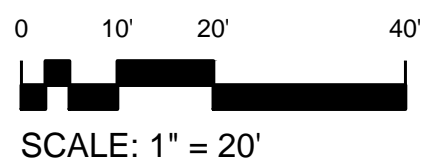


Aug 28, 2014 - 9:15am - 105_A1.dwg
 HE:Romney Hall/Building Plan - Book Copy

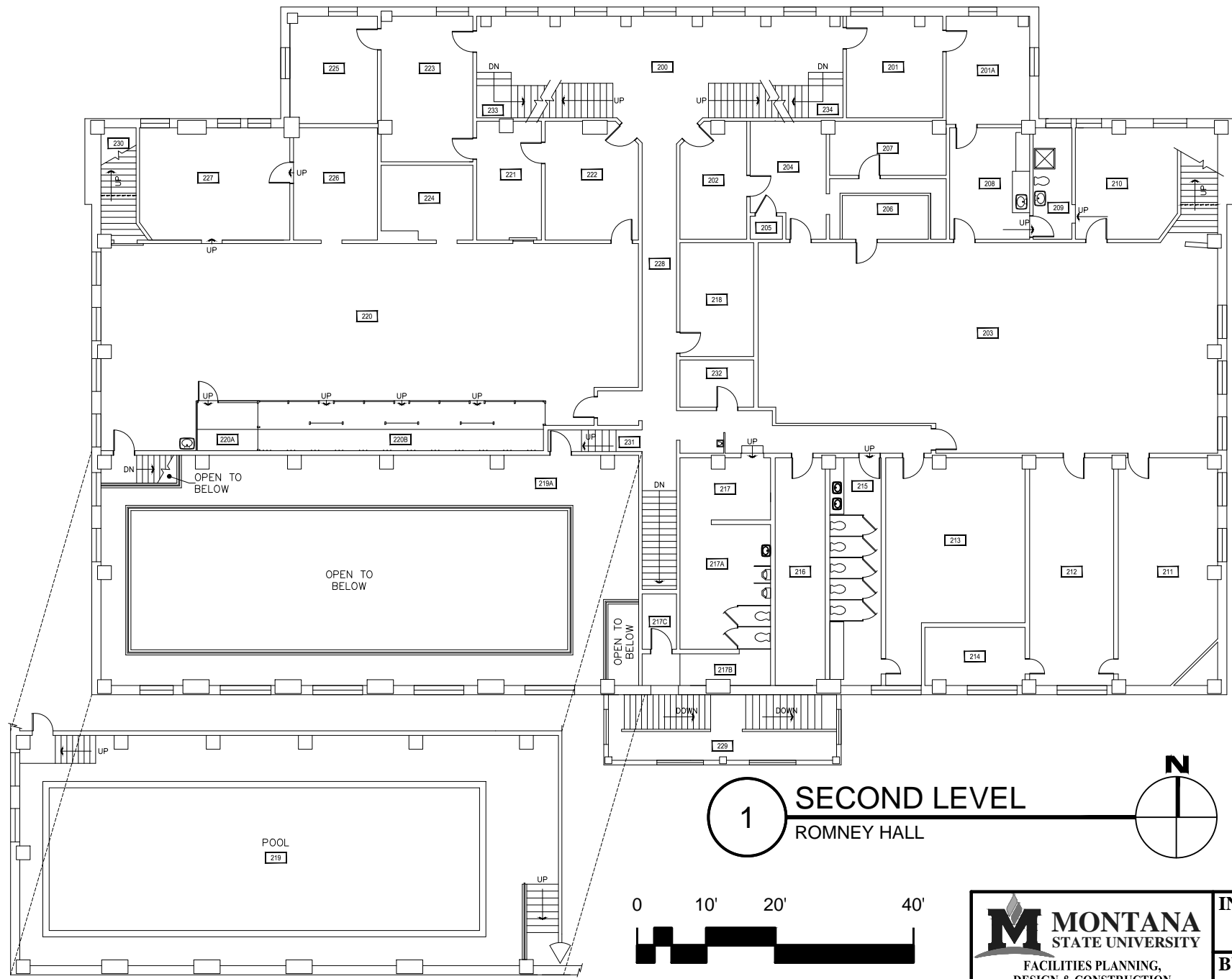


FIRST LEVEL
 ROMNEY HALL



 MONTANA STATE UNIVERSITY FACILITIES PLANNING, DESIGN & CONSTRUCTION BOZEMAN, MONTANA PHONE: 406.994.4131 FAX: 406.994.6572	INDEX #
	8
	BUILDING #
	105

Aug 28, 2014 - 9:15am - 105_A2.dwg
H:\Romney Hall\Building Plan - Book Copy\



1

SECOND LEVEL
ROMNEY HALL

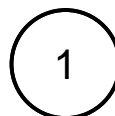
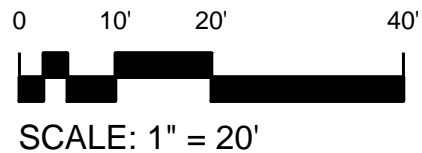
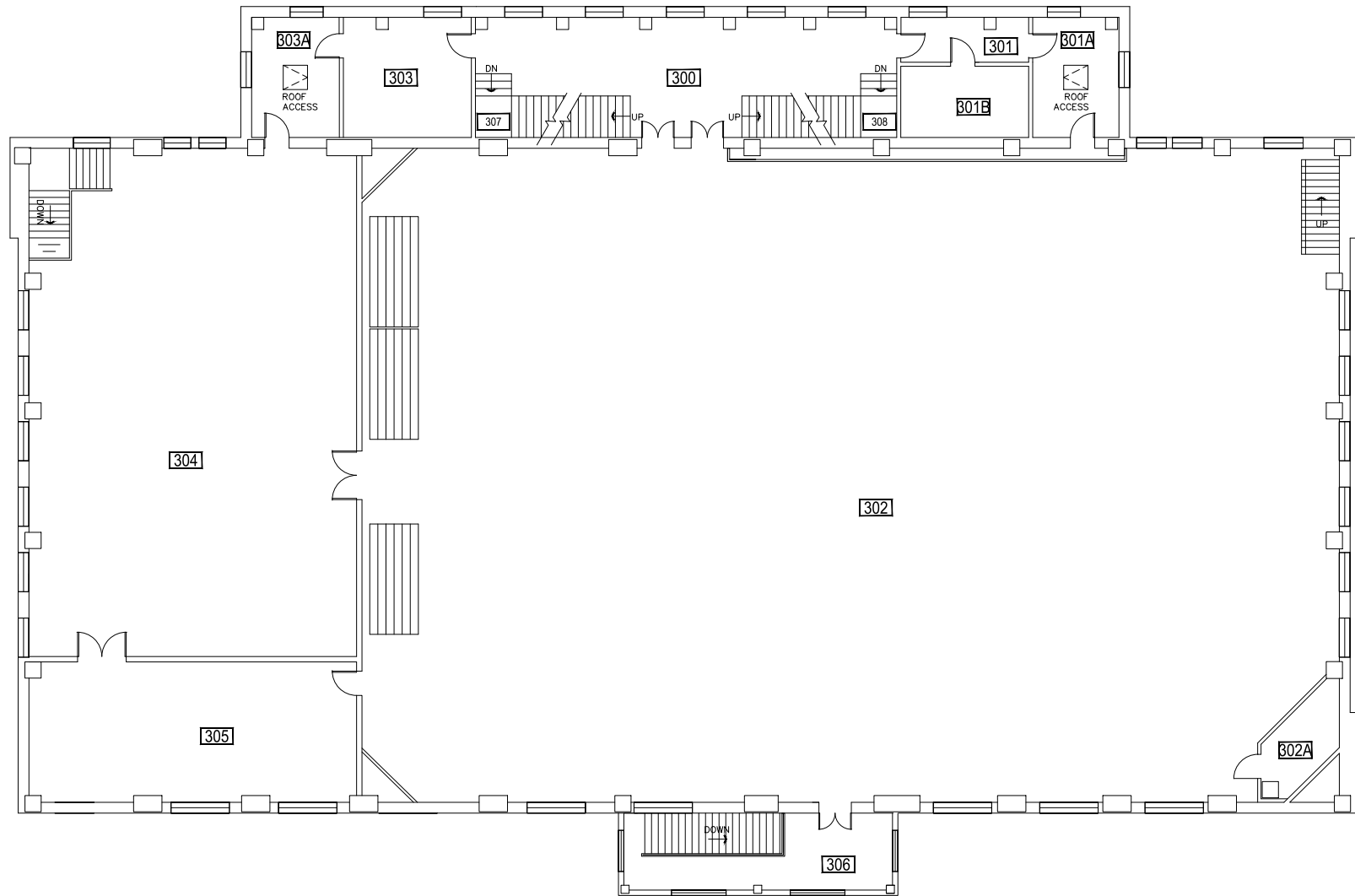


SCALE: 1" = 20'

M MONTANA STATE UNIVERSITY
FACILITIES PLANNING,
DESIGN & CONSTRUCTION
BOZEMAN, MONTANA
PHONE: 406.994.4131 FAX: 406.994.6572

INDEX #	8
BUILDING #	105

Aug 28, 2014 - 9:15am - 105_A3.dwg
HE:Romney Hall/Building Plan - Book Copy



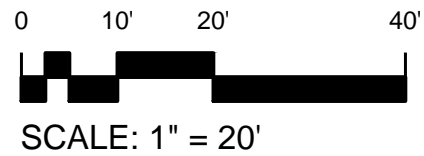
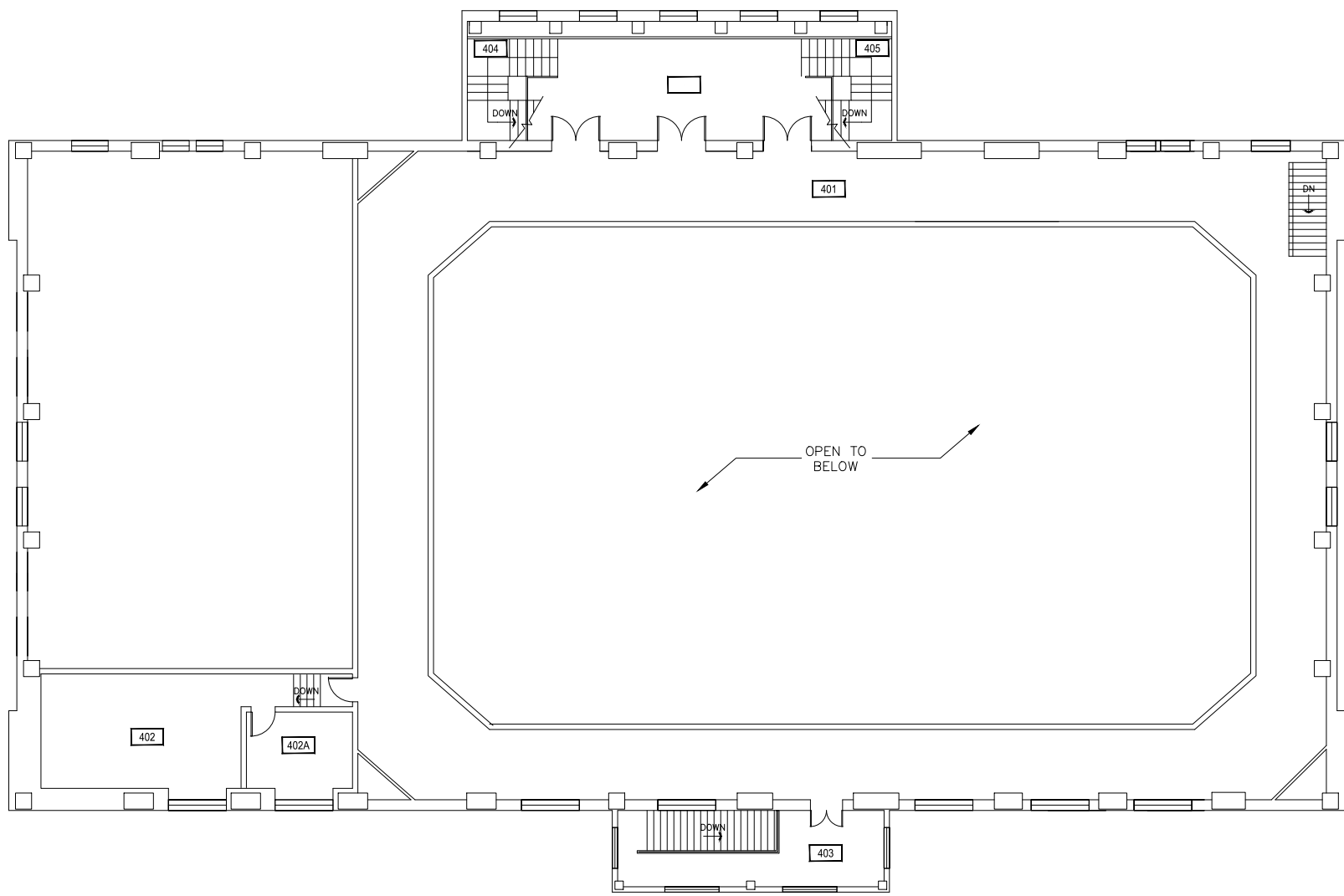
THIRD LEVEL
ROMNEY HALL



M MONTANA STATE UNIVERSITY
FACILITIES PLANNING,
DESIGN & CONSTRUCTION
BOZEMAN, MONTANA
PHONE: 406.994.4131 FAX: 406.994.6572

INDEX #	8
BUILDING #	105

Aug 28, 2014 - 9:15am - 105_A4.dwg
C:\Users\gary.gramer\appdata\local\temp\AcPublish_6784



1 FOURTH LEVEL
ROMNEY HALL

M MONTANA
STATE UNIVERSITY
FACILITIES PLANNING,
DESIGN & CONSTRUCTION
BOZEMAN, MONTANA
PHONE: 406.994.4131 FAX: 406.994.6572

INDEX #	8
BUILDING #	105

EXISTG. ROOF HATCH

EXISTG. VENTILATOR, TYP.

EXISTG. ROOF HATCH

EAVE WITH DRAIN (TYP)

PARAPET W/
CLAY TILE CAP

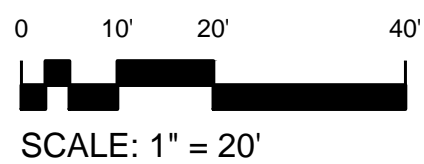
STANDING SEAM METAL
ROOFING PANELS

PARAPET W/
CLAY TILE CAP

VENTILATOR, TYP.

EXISTG. ROOF HATCH

Aug 28, 2014 - 9:15am - 105_AR.dwg
HE:Romney Hall/Building Plan - Book Copy



ROOF LEVEL
ROMNEY HALL

M MONTANA STATE UNIVERSITY
FACILITIES PLANNING,
DESIGN & CONSTRUCTION
BOZEMAN, MONTANA
PHONE: 406.994.4131 FAX: 406.994.6572

INDEX #	8
BUILDING #	105