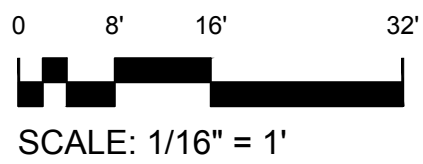
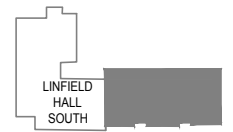
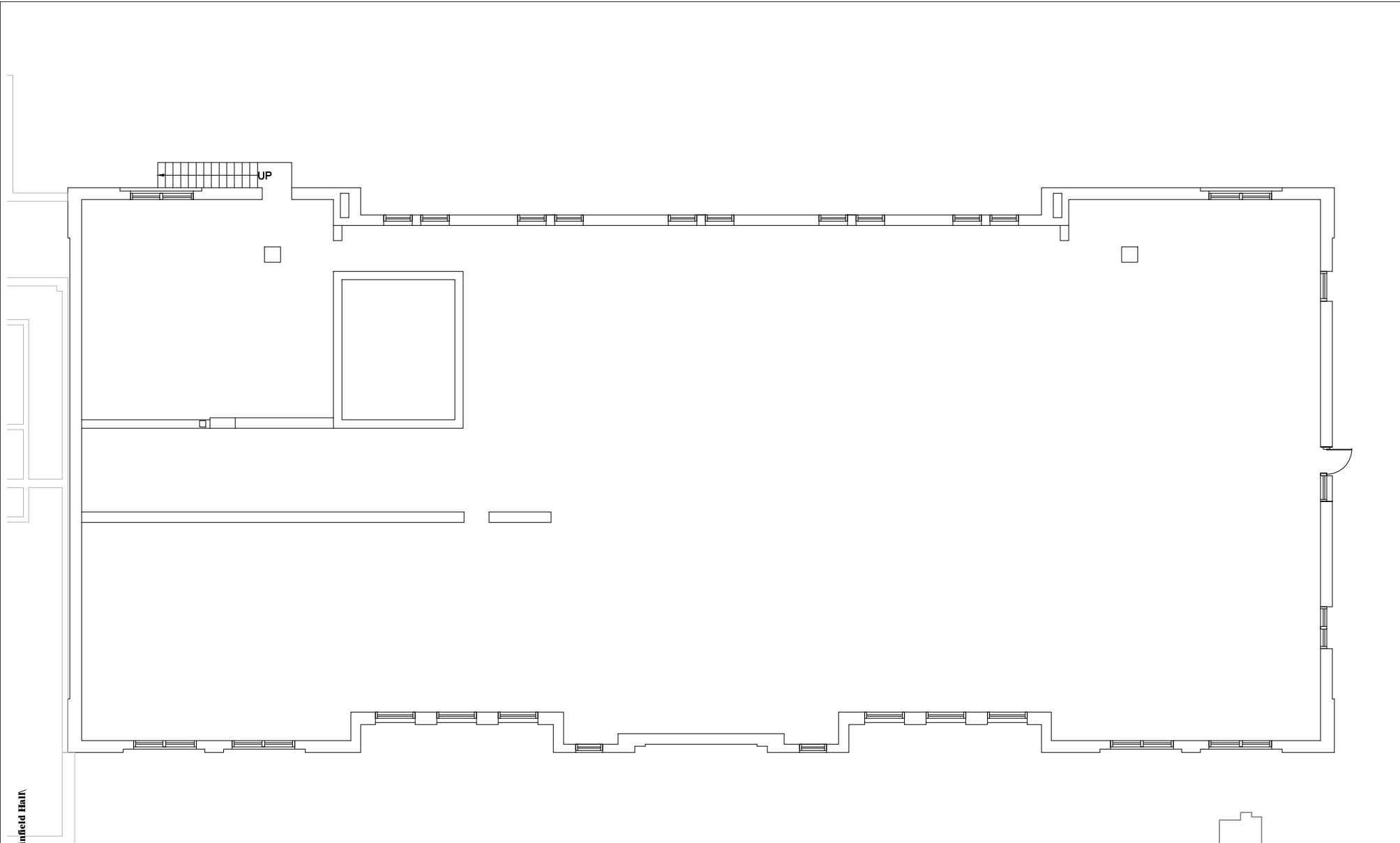


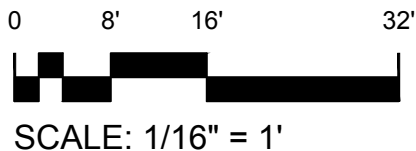
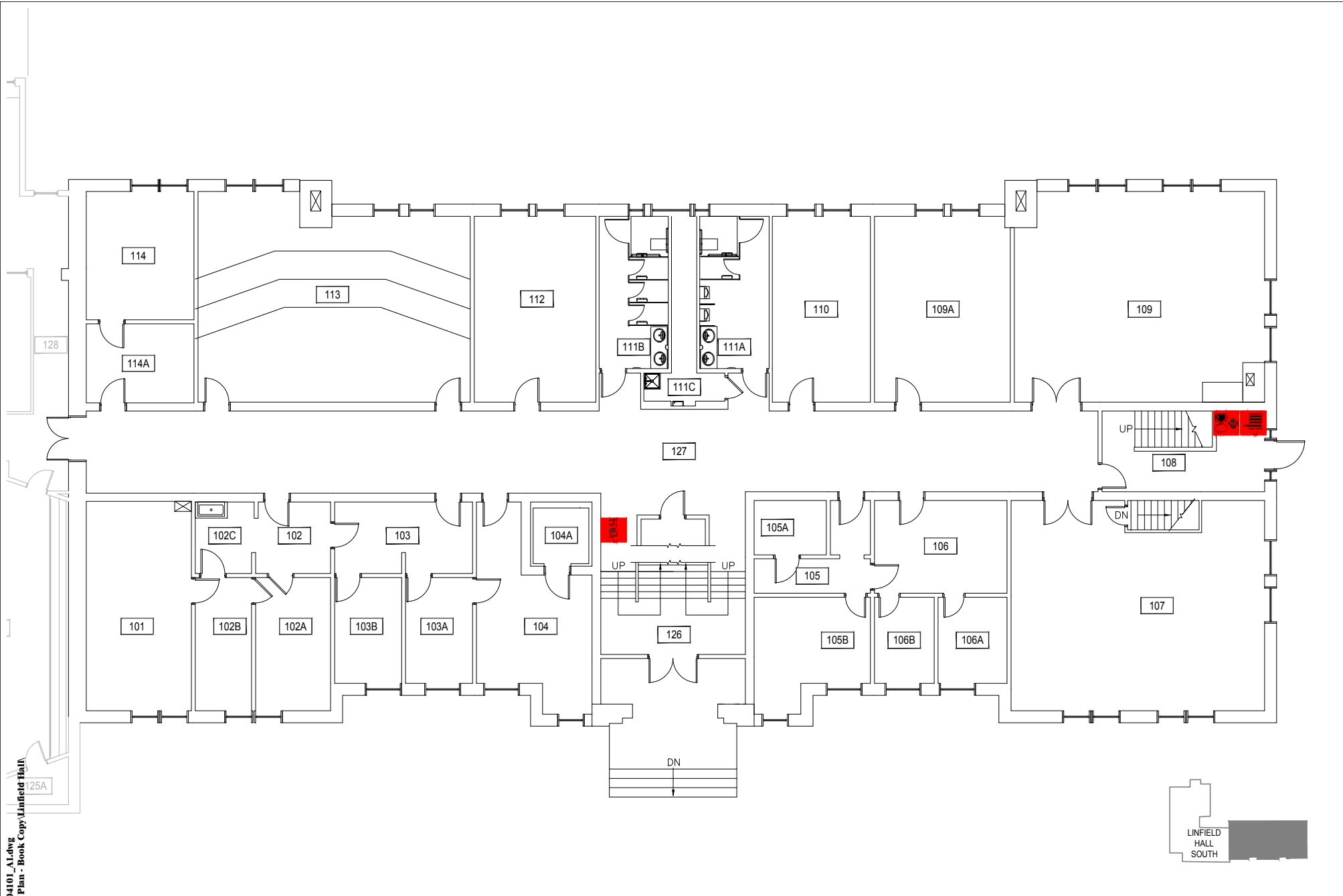
Jan 18, 2018 - 9:18am - 104101\_AB.dwg  
H:\Linfield Hall\Building Plan - Book Copy\Linfield Hall



**M** MONTANA  
STATE UNIVERSITY  
CAMPUS PLANNING,  
DESIGN & CONSTRUCTION  
BOZEMAN, MONTANA  
PHONE: 406.994.4131 FAX: 406.994.6572

INDEX # **30**  
BUILDING # **104101**

Jan 18, 2018 - 9:18am - 104101\_A1.dwg  
H:\Linfield Hall\Building Plan - Book Copy\Linfield Hall

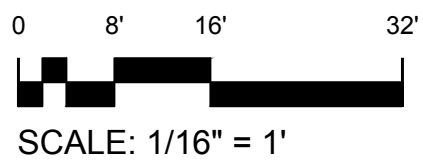
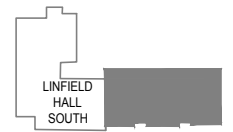
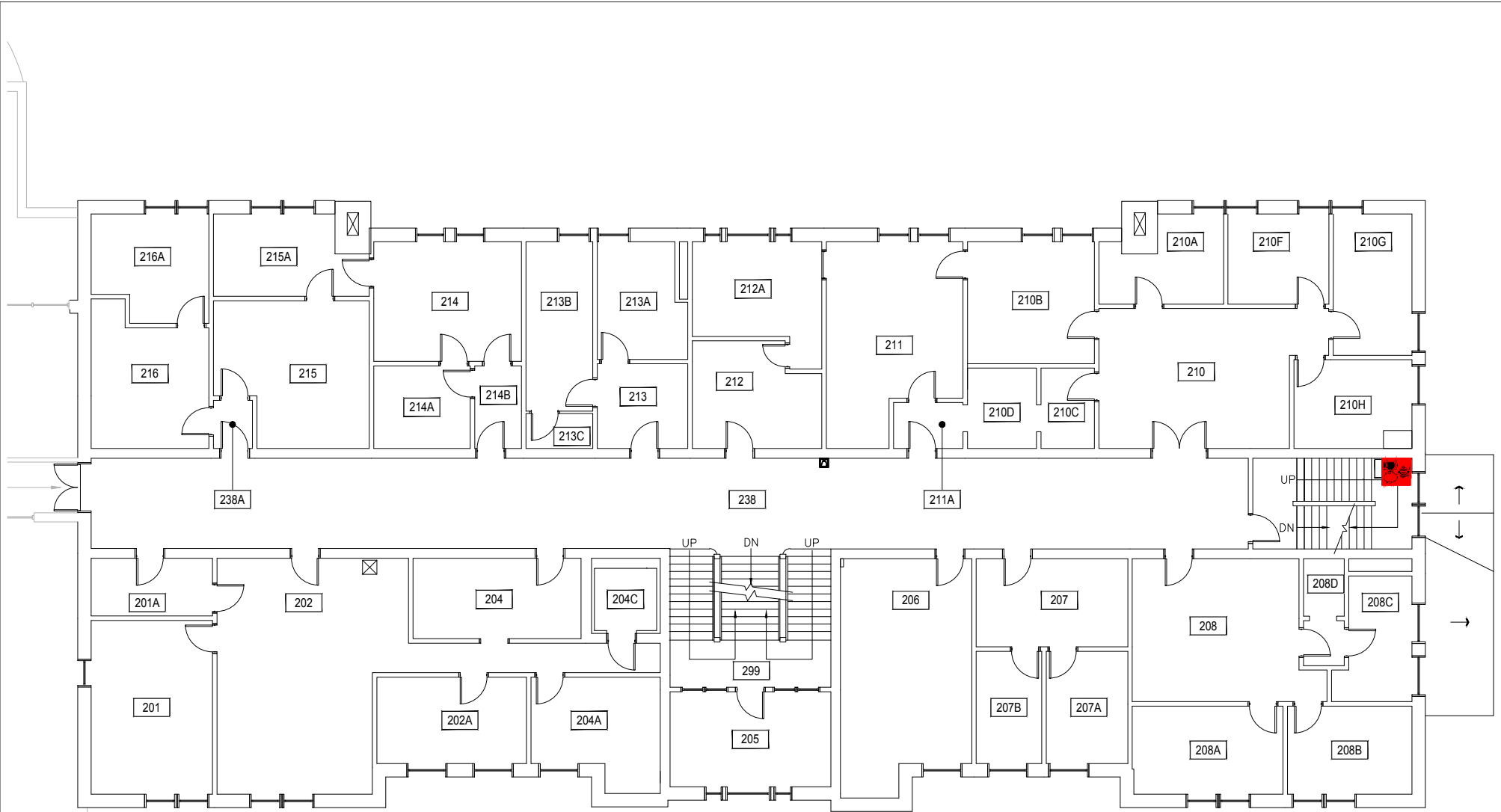


1 FIRST LEVEL  
LINFIELD HALL

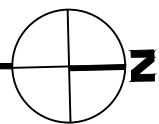
**M** MONTANA  
STATE UNIVERSITY  
CAMPUS PLANNING,  
DESIGN & CONSTRUCTION  
BOZEMAN, MONTANA  
PHONE: 406.994.4131 FAX: 406.994.6572

INDEX #  
**30**  
BUILDING #  
**104101**

Jan 18, 2018 - 9:18am - 104101\_A2.dwg  
E:\Unified Hall\Building Plan - Book Copy\Linfield Hall



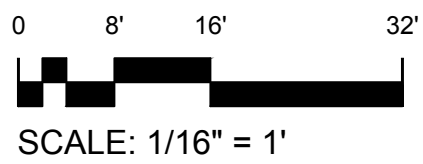
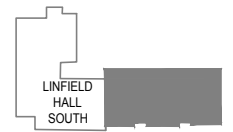
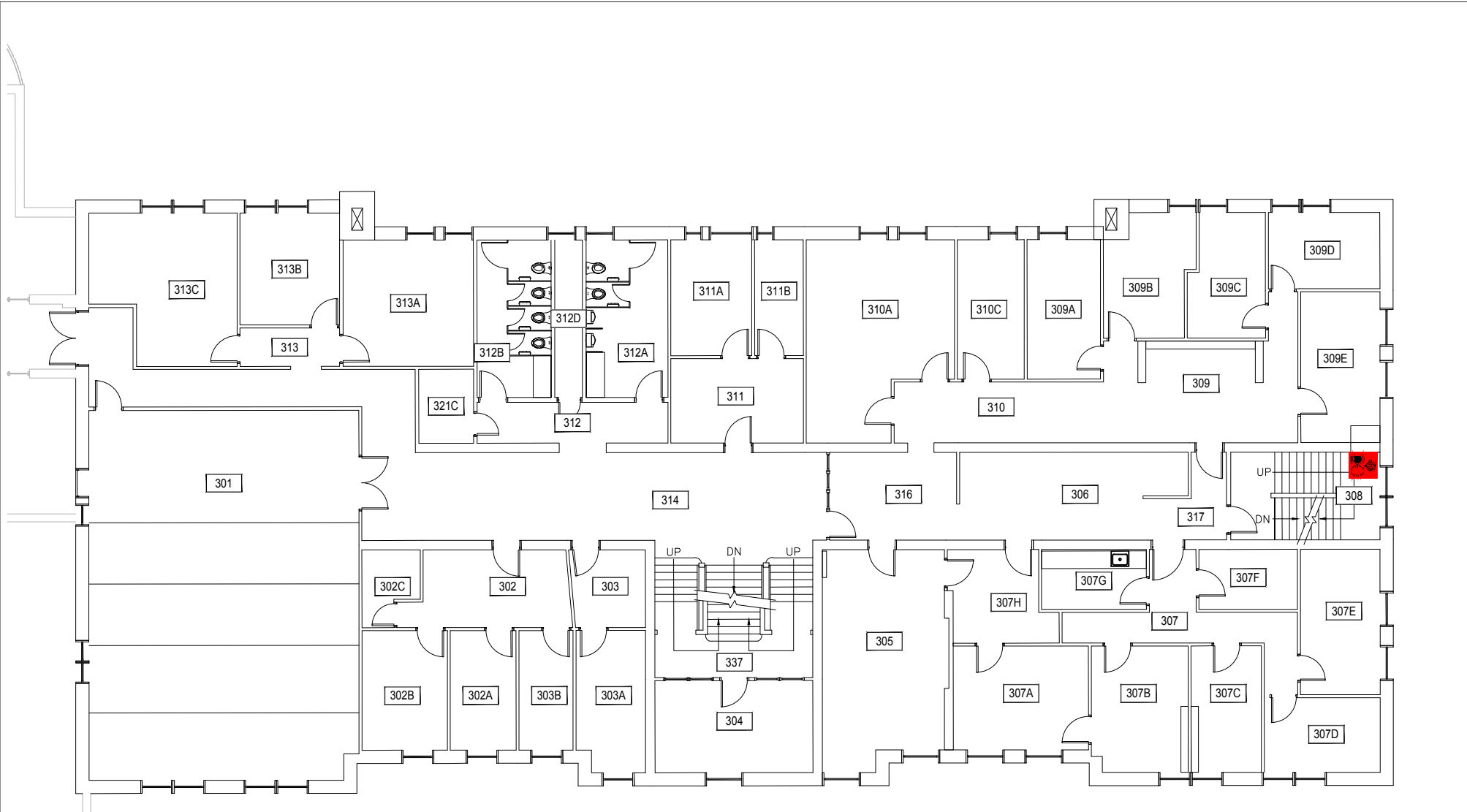
1 SECOND LEVEL  
LINFIELD HALL



**M** MONTANA STATE UNIVERSITY  
CAMPUS PLANNING,  
DESIGN & CONSTRUCTION  
BOZEMAN, MONTANA  
PHONE: 406.994.4131 FAX: 406.994.6572

INDEX # **30**  
BUILDING # **104101**

Jan 18, 2018 - 9:18am - 104101\_A3.dwg  
E:\Unified Hall\Building Plan - Book Copy\Linfield Hall

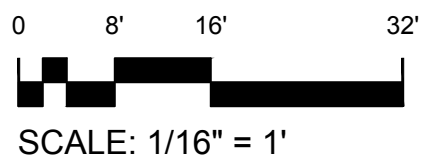
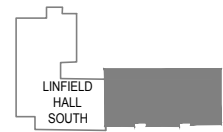
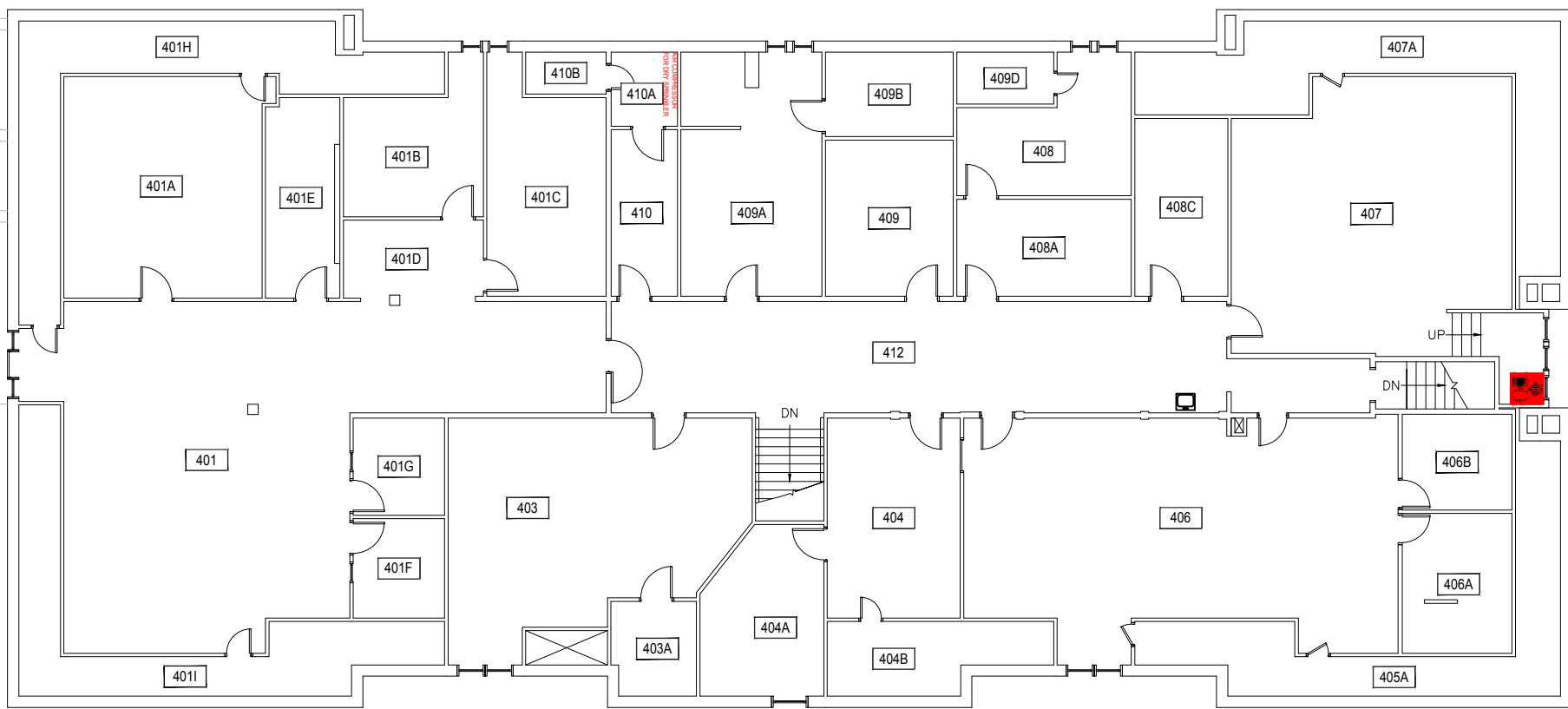


1 THIRD LEVEL  
LINFIELD HALL

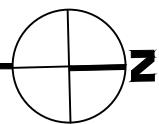
**M** MONTANA  
STATE UNIVERSITY  
CAMPUS PLANNING,  
DESIGN & CONSTRUCTION  
BOZEMAN, MONTANA  
PHONE: 406.994.4131 FAX: 406.994.6572

INDEX #  
**30**  
BUILDING #  
**104101**

Jan 18, 2018 - 9:18am - 104101\_A4.dwg  
H:\Linfield Hall\Building Plan - Book Copy\Linfield Hall



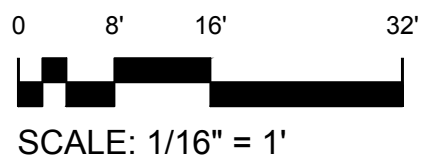
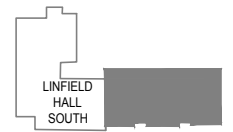
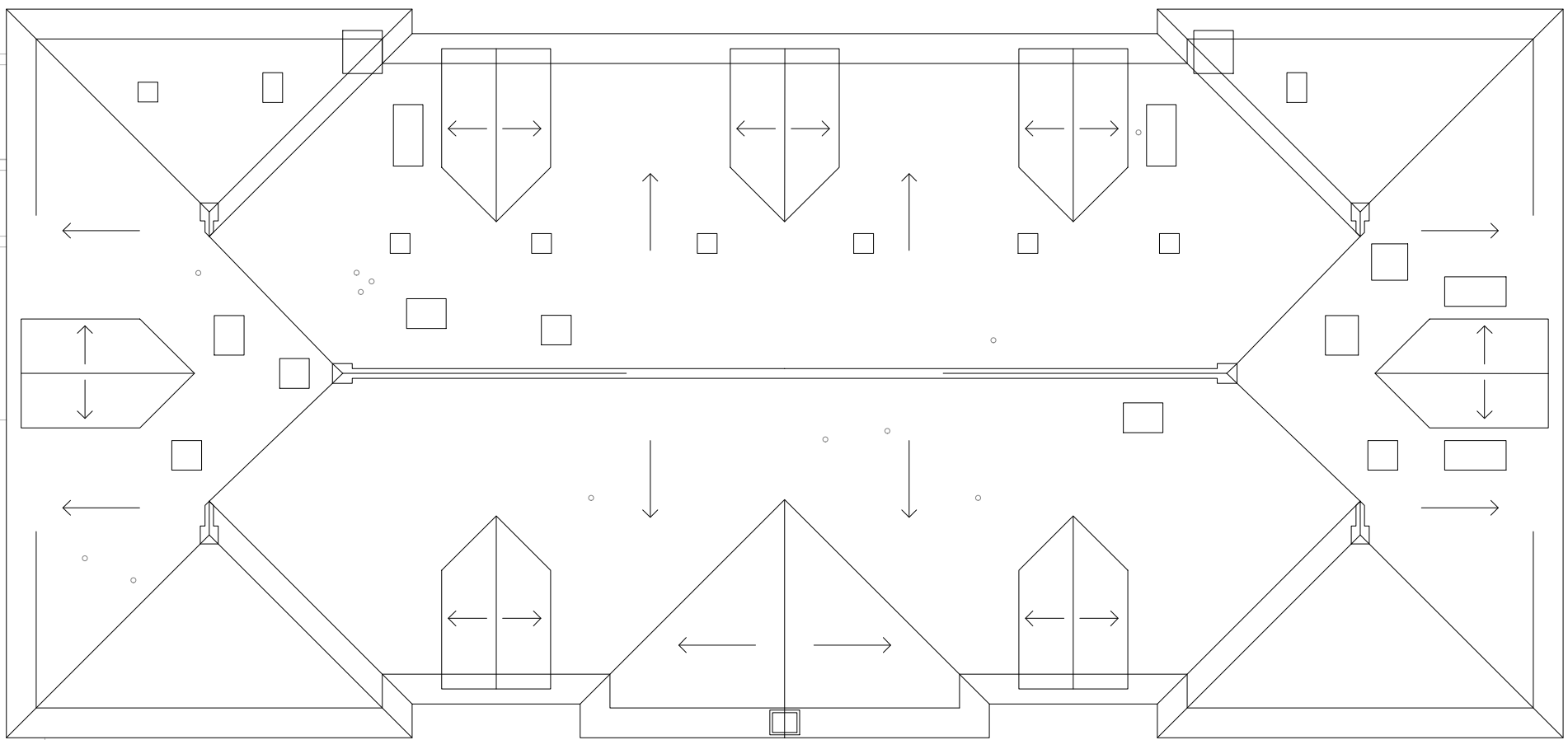
1 FOURTH LEVEL  
LINFIELD HALL



**M** MONTANA STATE UNIVERSITY  
CAMPUS PLANNING,  
DESIGN & CONSTRUCTION  
BOZEMAN, MONTANA  
PHONE: 406.994.4131 FAX: 406.994.6572

INDEX # **30**  
BUILDING # **104101**

Jan 18, 2018 - 9:18am - 104101\_AR.dwg  
E:\Unified Hall\Building Plan - Book Copy\Linfield Hall



**M** MONTANA  
STATE UNIVERSITY  
CAMPUS PLANNING,  
DESIGN & CONSTRUCTION  
BOZEMAN, MONTANA  
PHONE: 406.994.4131 FAX: 406.994.6572

INDEX #  
**30**  
BUILDING #  
**104101**