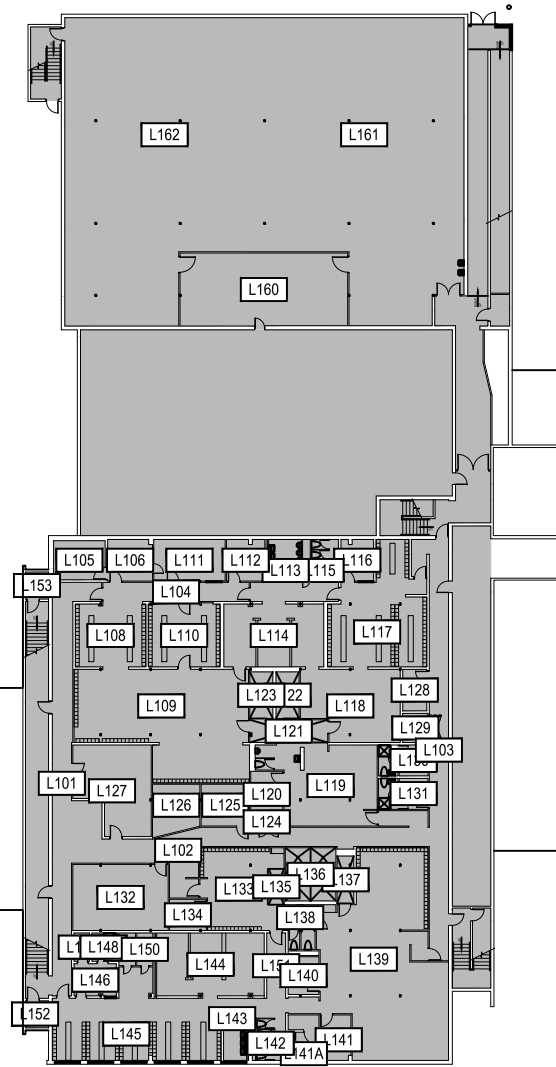


Dec 16, 2016 - 9:58am - AC_936_AB.dwg
H:\Bozeman High School\Building Plan Book\



1

BOZEMAN HIGH SCHOOL - BASEMENT LEVEL - S

SCALE: 1" = 50'

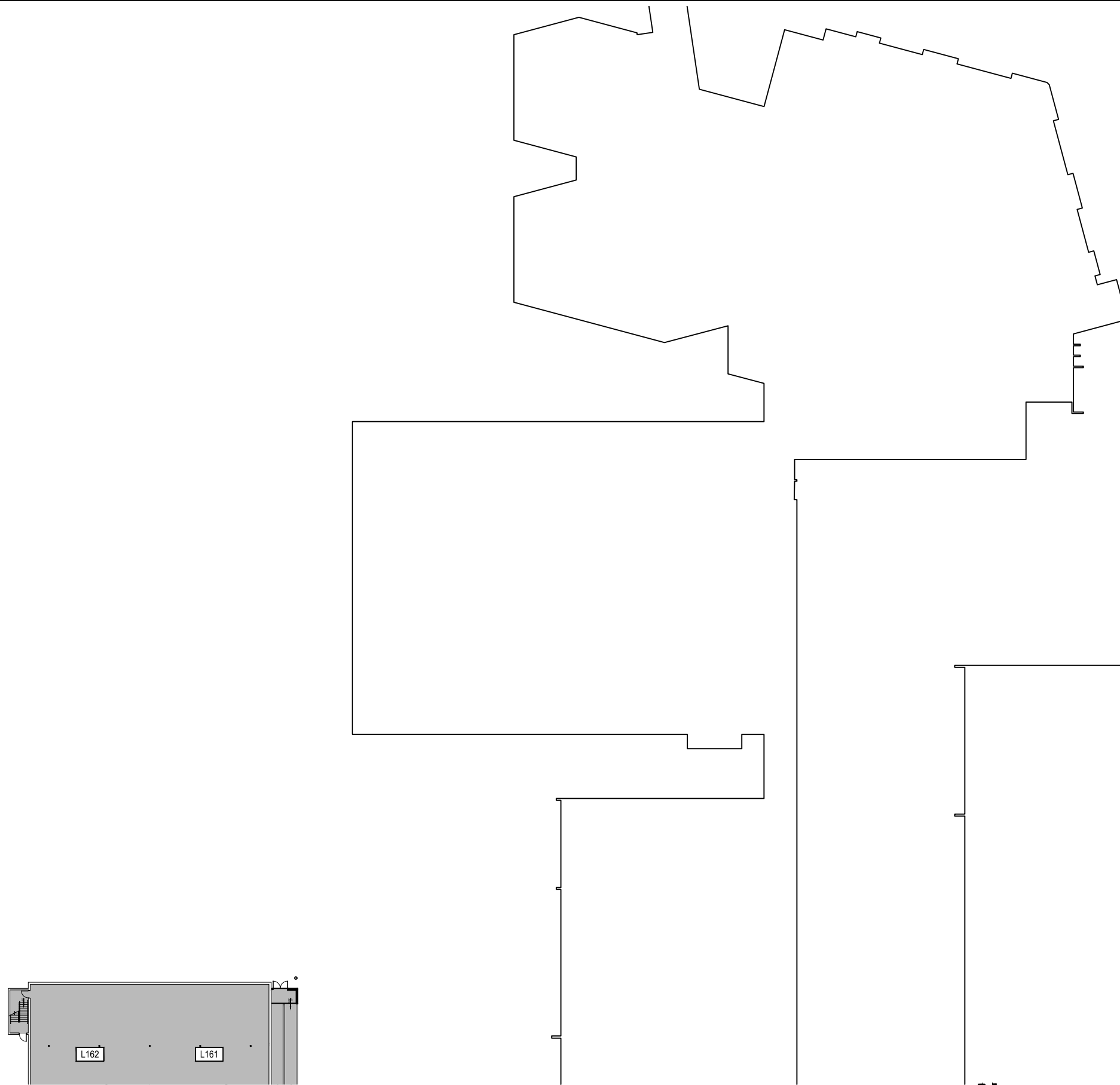


LEASED PROPERTY
GALLATIN COLLEGE

M MONTANA
STATE UNIVERSITY
CAMPUS PLANNING,
DESIGN & CONSTRUCTION
BOZEMAN, MONTANA
PHONE: 406.994.5413 FAX: 406.994.5665

INDEX #	144
BUILDING #	936

Dec 16, 2016 - 9:58am - AC_936_AB.dwg
H:\Bozeman High School\Building Plan Book\



1

BOZEMAN HIGH SCHOOL - BASEMENT LEVEL - C
SCALE: 1" = 50'

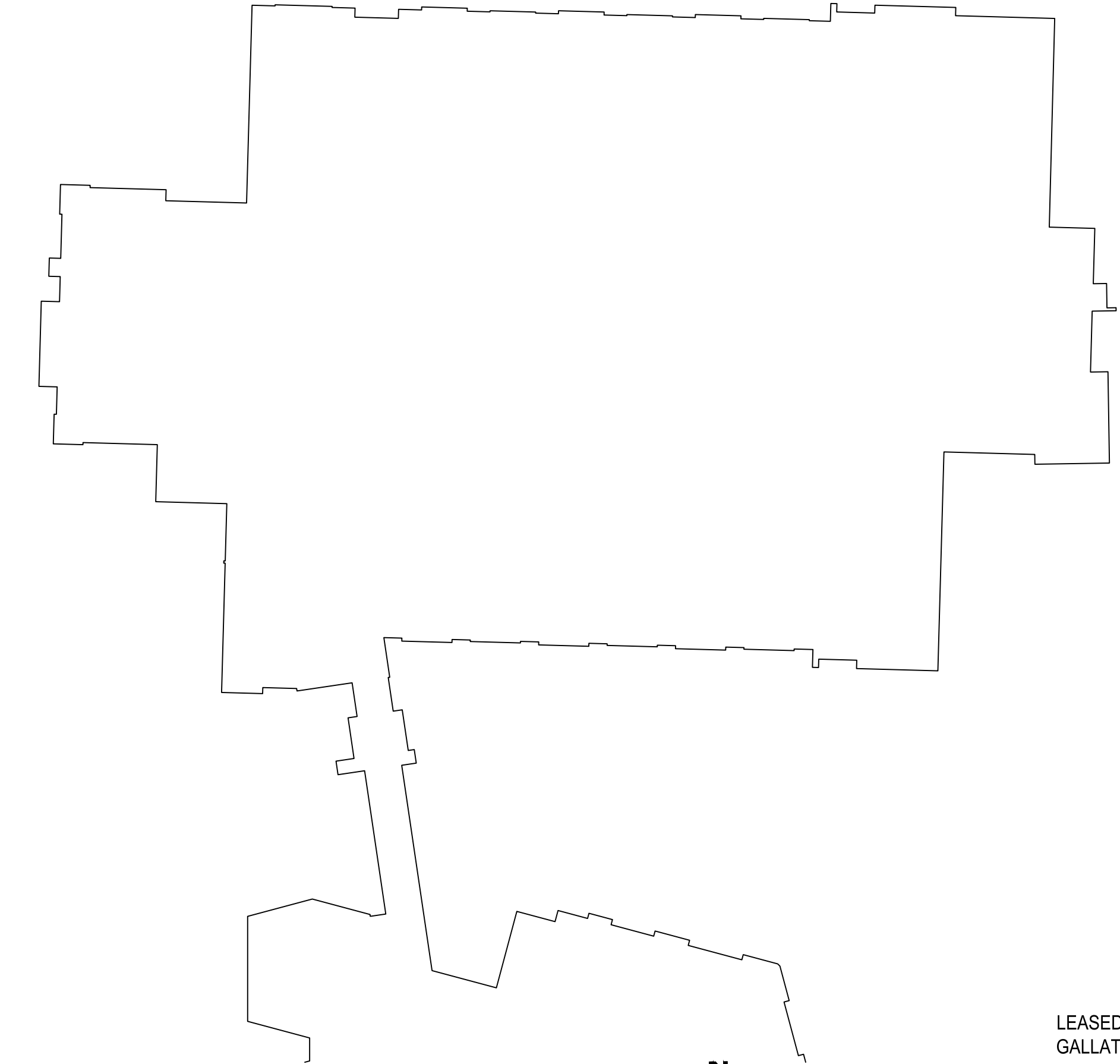


LEASED PROPERTY
GALLATIN COLLEGE

M MONTANA
STATE UNIVERSITY
CAMPUS PLANNING,
DESIGN & CONSTRUCTION
BOZEMAN, MONTANA
PHONE: 406.994.5413 FAX: 406.994.5665

INDEX #
144
BUILDING #
936

Dec 16, 2016 - 9:58am - AC_936_AB.dwg
H:\Bozeman High School\Building Plan Book\



1

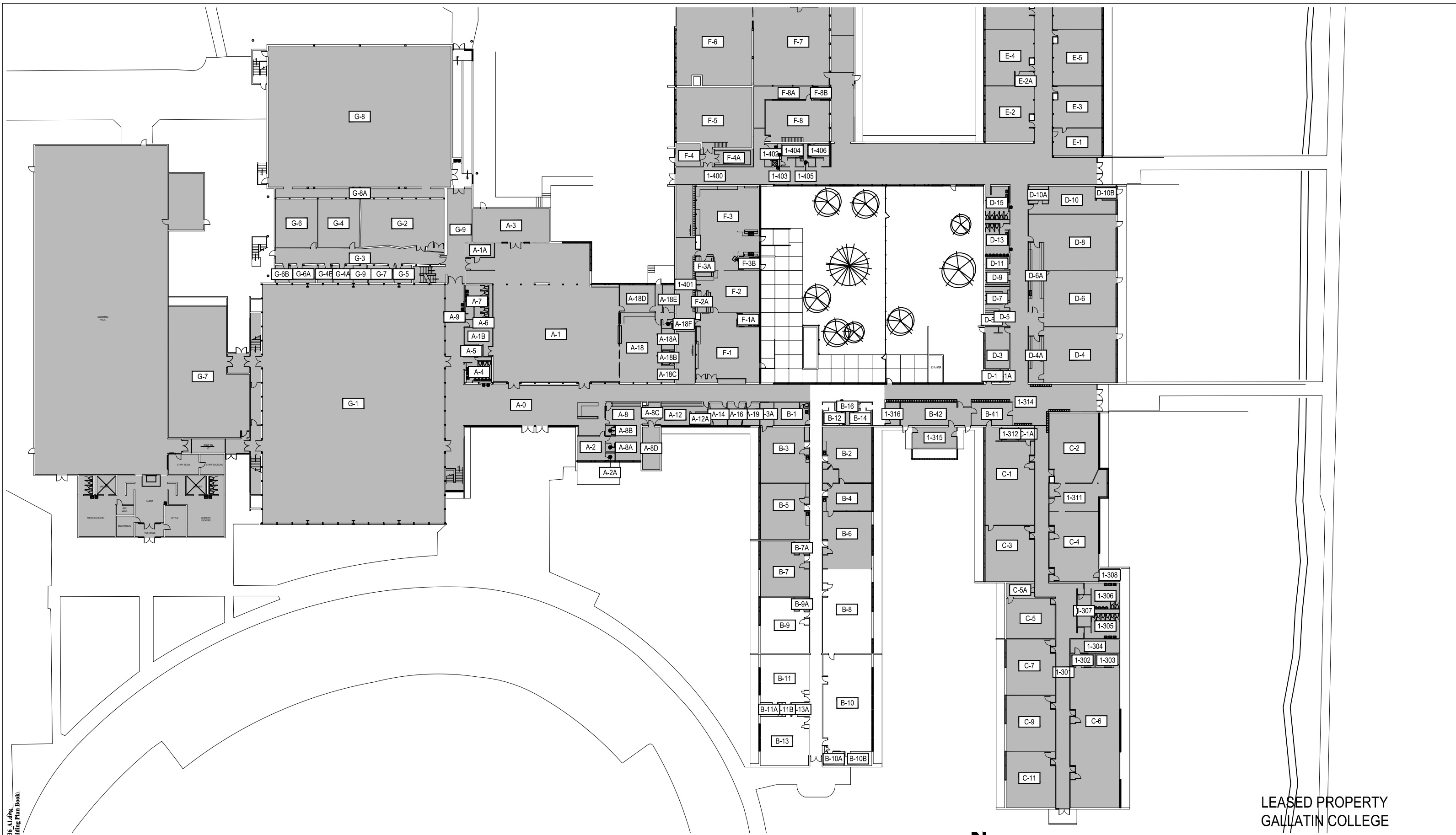
BOZEMAN HIGH SCHOOL - BASEMENT LEVEL - N
SCALE: 1" = 50'



LEASED PROPERTY
GALLATIN COLLEGE

M MONTANA
STATE UNIVERSITY
CAMPUS PLANNING,
DESIGN & CONSTRUCTION
BOZEMAN, MONTANA
PHONE: 406.994.5413 FAX: 406.994.5665

INDEX #	144
BUILDING #	936



Dec 16, 2016 - 9:58am - AC 936 A1.dwg
 H:\Bozeman High School\Building Plan Book\

1

BOZEMAN HIGH SCHOOL - FIRST LEVEL - S
 SCALE: 1" = 50'

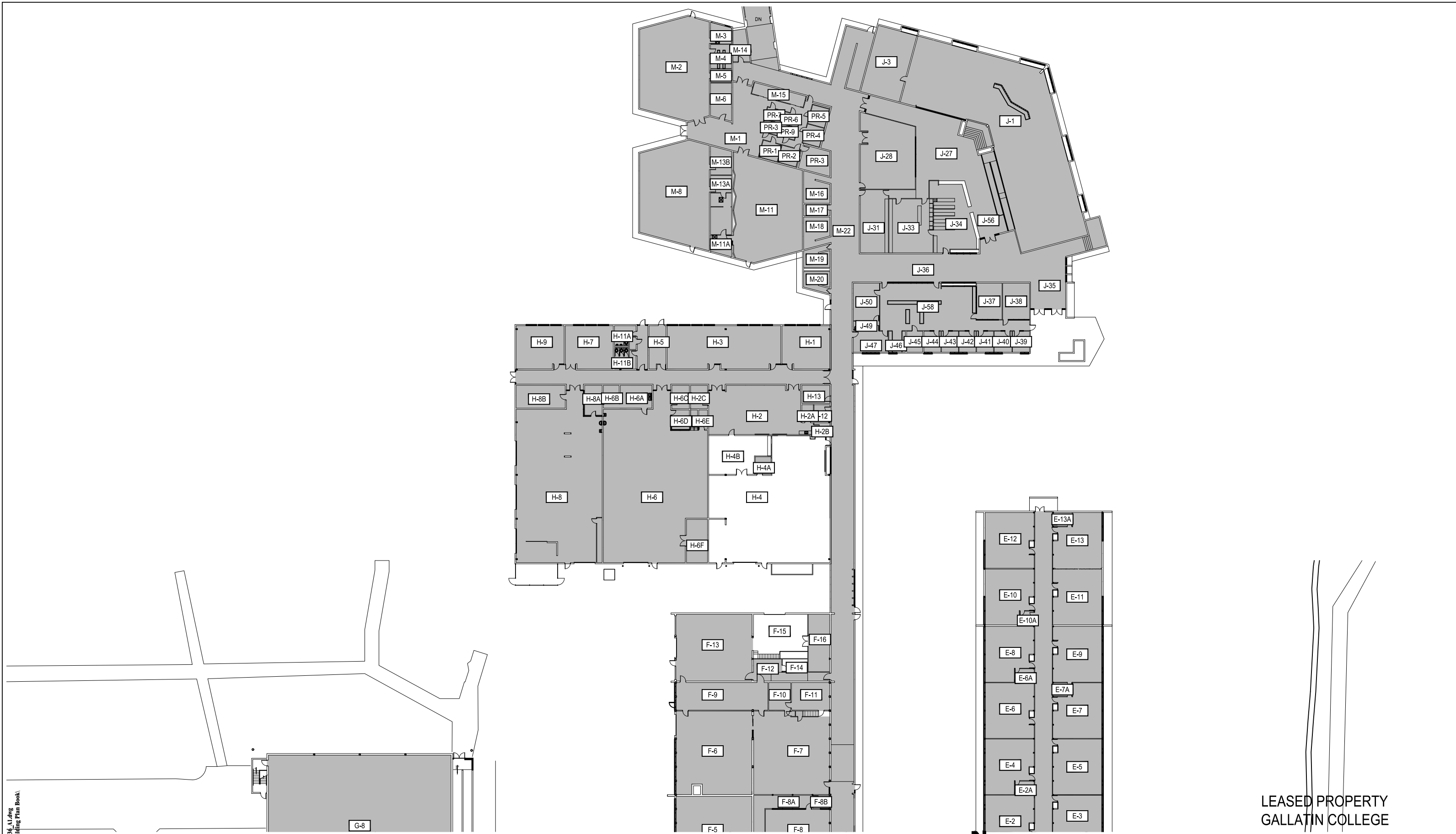


LEASED PROPERTY
 GALLATIN COLLEGE


MONTANA
 STATE UNIVERSITY
 CAMPUS PLANNING,
 DESIGN & CONSTRUCTION
 BOZEMAN, MONTANA
 PHONE: 406.994.5413 FAX: 406.994.5665

INDEX #	144
BUILDING #	936

Dec 16, 2016 - 9:58am - AC_936_A1.dwg
H:\Bozeman High School\Building Plan Book\



1

BOZEMAN HIGH SCHOOL - FIRST LEVEL - C

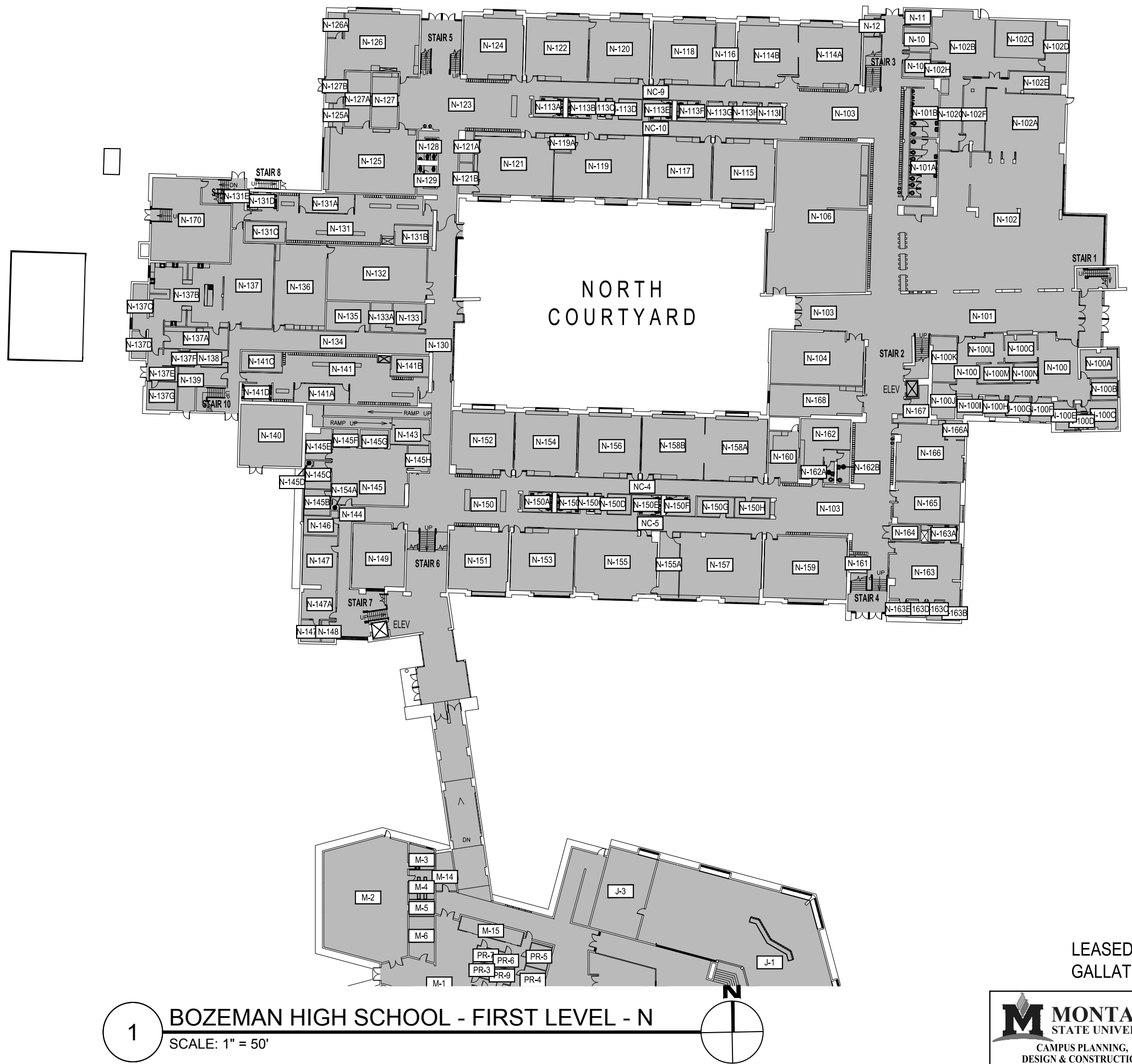
SCALE: 1" = 50'



LEASED PROPERTY
GALLATIN COLLEGE

M MONTANA
STATE UNIVERSITY
CAMPUS PLANNING,
DESIGN & CONSTRUCTION
BOZEMAN, MONTANA
PHONE: 406.994.5413 FAX: 406.994.5665

INDEX #
144
BUILDING #
936



1

BOZEMAN HIGH SCHOOL - FIRST LEVEL - N

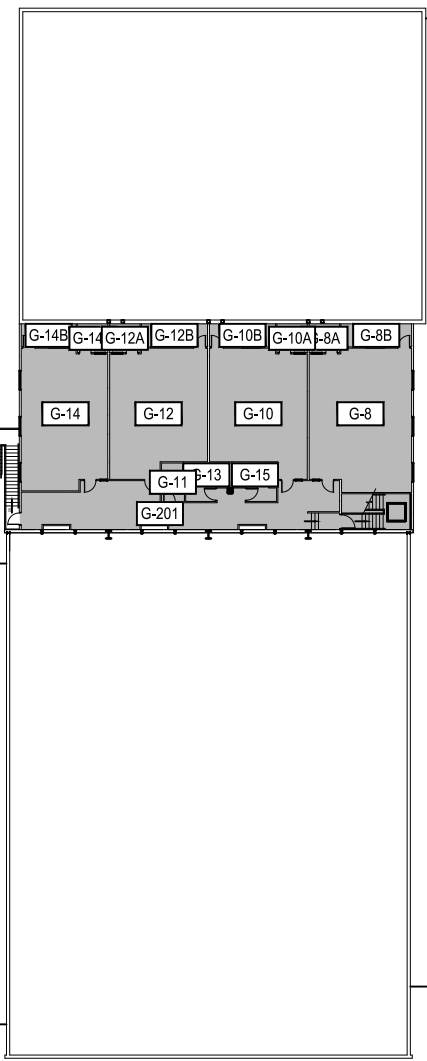
SCALE: 1" = 50'



LEASED PROPERTY
GALLATIN COLLEGE

M MONTANA STATE UNIVERSITY
CAMPUS PLANNING,
DESIGN & CONSTRUCTION
BOZEMAN, MONTANA
PHONE: 406.994.5413 FAX: 406.994.5665

INDEX #	144
BUILDING #	936



Dec 16, 2016 - 9:58am - AC_936_A2.dwg
 H:\Bozeman High School\Building Plan Book\

1

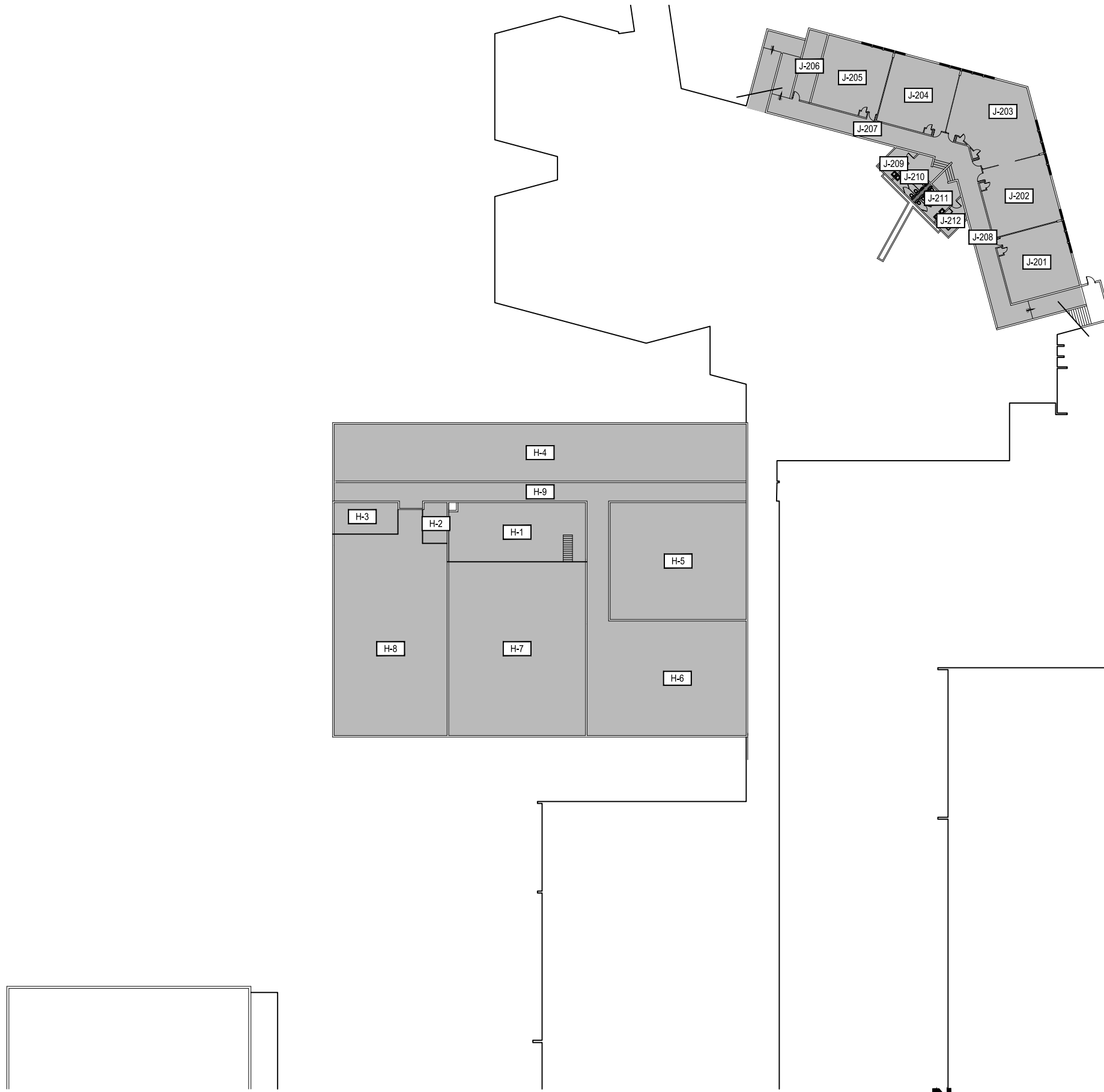
BOZEMAN HIGH SCHOOL - SECOND LEVEL - S
 SCALE: 1" = 50'



LEASED PROPERTY
 GALLATIN COLLEGE

M MONTANA
 STATE UNIVERSITY
 CAMPUS PLANNING,
 DESIGN & CONSTRUCTION
 BOZEMAN, MONTANA
 PHONE: 406.994.5413 FAX: 406.994.5665

INDEX #	144
BUILDING #	936



1

BOZEMAN HIGH SCHOOL - SECOND LEVEL - C

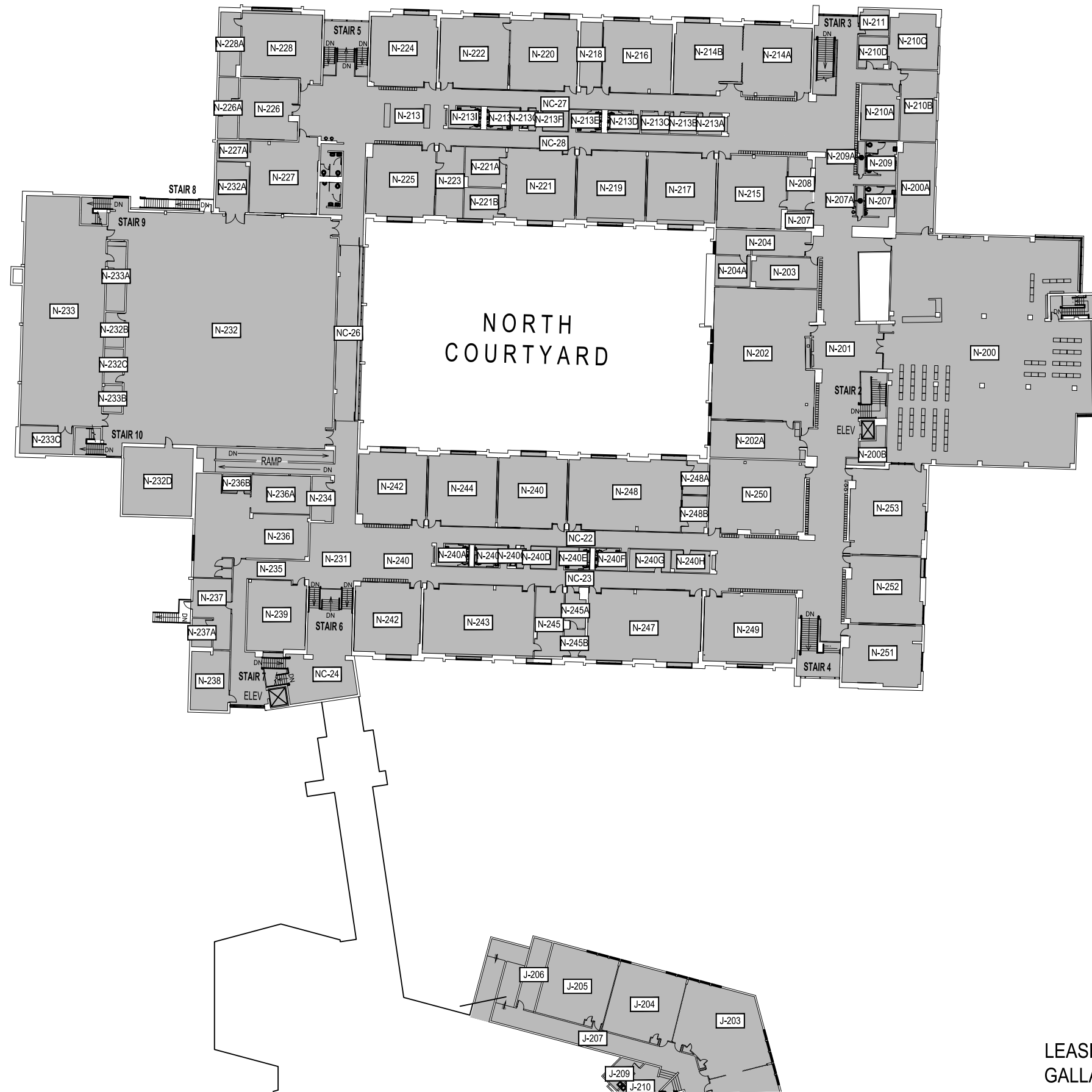
SCALE: 1" = 50'



LEASED PROPERTY
GALLATIN COLLEGE

M MONTANA
STATE UNIVERSITY
CAMPUS PLANNING,
DESIGN & CONSTRUCTION
BOZEMAN, MONTANA
PHONE: 406.994.5413 FAX: 406.994.5665

INDEX #	144
BUILDING #	936



1 BOZEMAN HIGH SCHOOL - SECOND LEVEL - N
 SCALE: 1" = 50'

LEASED PROPERTY
 GALLATIN COLLEGE

M MONTANA STATE UNIVERSITY
 CAMPUS PLANNING,
 DESIGN & CONSTRUCTION
 BOZEMAN, MONTANA
 PHONE: 406.994.5413 FAX: 406.994.5665

INDEX #	144
BUILDING #	936

Dec 16, 2016 - 9:58am - AC_936_A2.dwg
 H:\Bozeman High School\Building Plan Book\