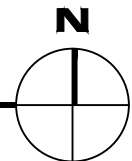


1

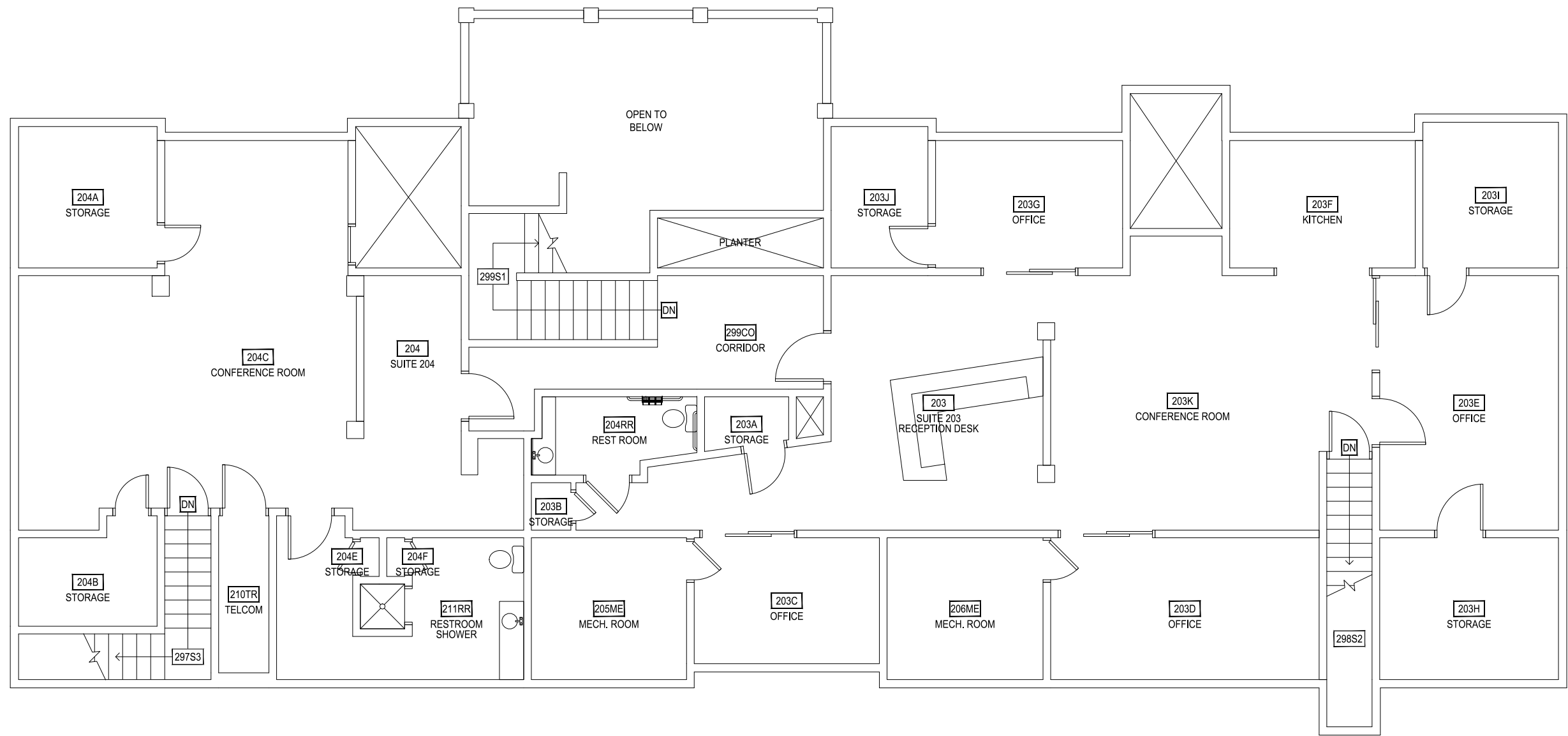
MSU ALUMNI FOUNDATION - 1822 WEST LINCOLN - FIRST LEVEL

SCALE: 1/8" = 1'



**M** MONTANA STATE UNIVERSITY  
 CAMPUS PLANNING,  
 DESIGN & CONSTRUCTION  
 BOZEMAN, MONTANA  
 PHONE: 406.994.5413 FAX: 406.994.5665

INDEX #  
**138**  
 BUILDING #  
**935**



Jan 27, 2015 - 3:36pm - 835\_A2.dwg  
 H:\MSU Alumni Foundation - 1822 West Lincoln\Building Plan - Book Copy\

1

MSU ALUMNI FOUNDATION - 1822 WEST LINCOLN - SECOND LEVEL

SCALE: 1/8" = 1'



**M** MONTANA STATE UNIVERSITY  
 CAMPUS PLANNING,  
 DESIGN & CONSTRUCTION  
 BOZEMAN, MONTANA  
 PHONE: 406.994.5413 FAX: 406.994.5665

INDEX #  
**138**  
 BUILDING #  
**935**