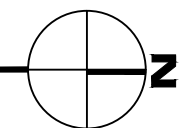


1

FRONTAGE ROAD COMMERCIAL PROPERTIES - FIRST LEVEL

SCALE: 1" = 20'

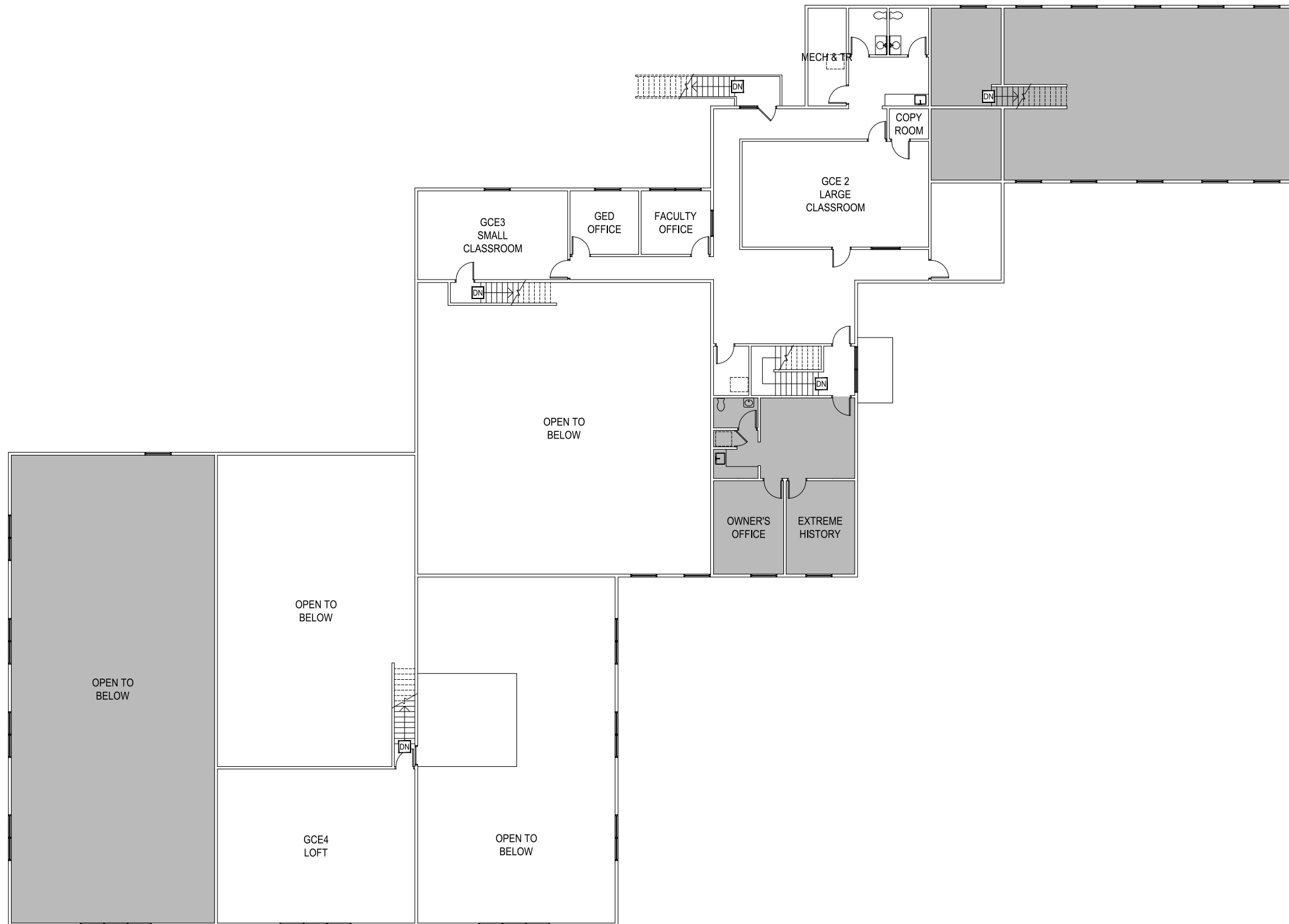


GALLATIN COLLEGE EAST CAMPUS
705 OSTERMAN DRIVE

M MONTANA STATE UNIVERSITY
CAMPUS PLANNING,
DESIGN & CONSTRUCTION
BOZEMAN, MONTANA
PHONE: 406.994.5413 FAX: 406.994.5665

INDEX #
135
BUILDING #
910

Jan 15, 2015 - 7:24am - 910_A1.dwg
C:\Users\gary.gramez\appdata\local\temp\AcPublish_2680\



1

FRONTAGE ROAD COMMERCIAL PROPERTIES - SECOND LEVEL

SCALE: 1" = 20'



GALLATIN COLLEGE EAST CAMPUS
705 OSTERMAN DRIVE

M MONTANA STATE UNIVERSITY
CAMPUS PLANNING,
DESIGN & CONSTRUCTION
BOZEMAN, MONTANA
PHONE: 406.994.5413 FAX: 406.994.5665

INDEX #	135
BUILDING #	910