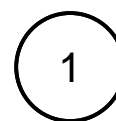
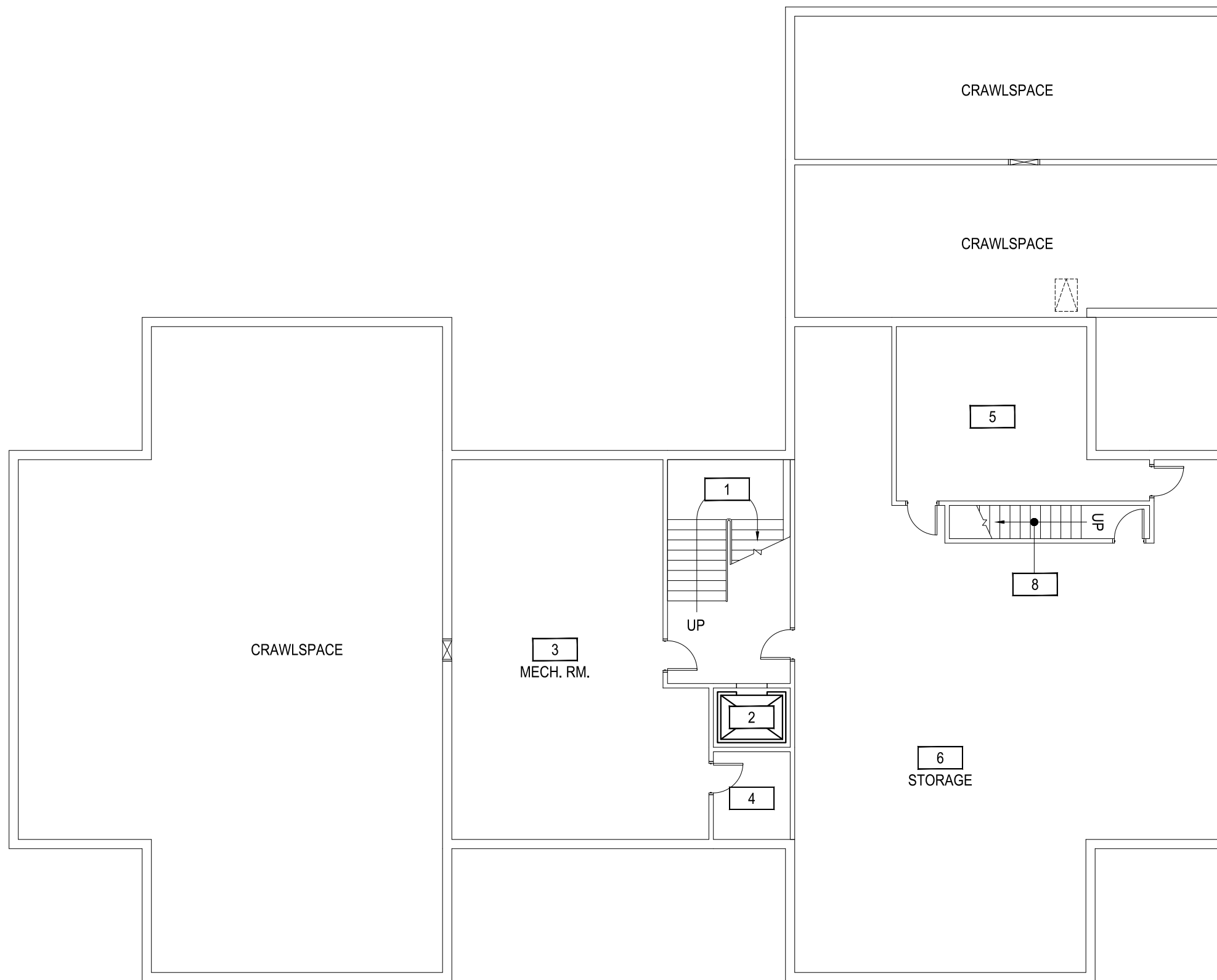
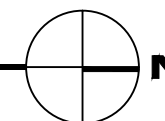


Jan 27, 2015 - 3:32pm - 900_AB.dwg
C:\Users\gary.grame\appdata\local\temp\AcPublish_6940\



MSU ALUMNI FOUNDATION CENTER - BASEMENT LEVEL

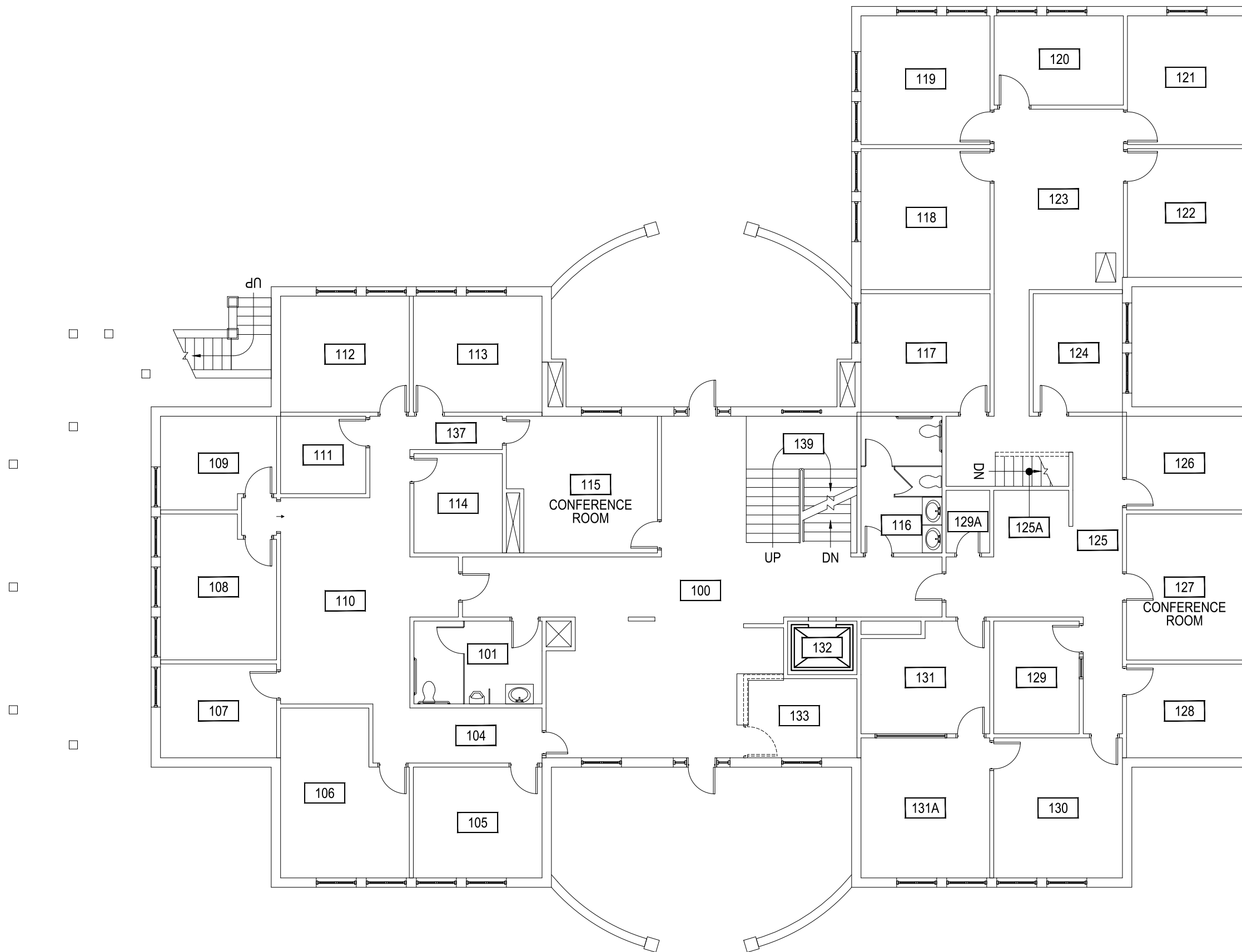
SCALE: 3/32" = 1'



M MONTANA STATE UNIVERSITY
CAMPUS PLANNING,
DESIGN & CONSTRUCTION
BOZEMAN, MONTANA
PHONE: 406.994.5413 FAX: 406.994.5665

| | |
|------------|------------|
| INDEX # | 79 |
| BUILDING # | 900 |

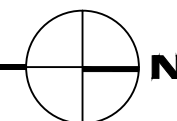
Jan 27, 2015 - 3:32pm - 900_A1.dwg
C:\Users\gary.grame\appdata\local\temp\AcPublish_6940\



1

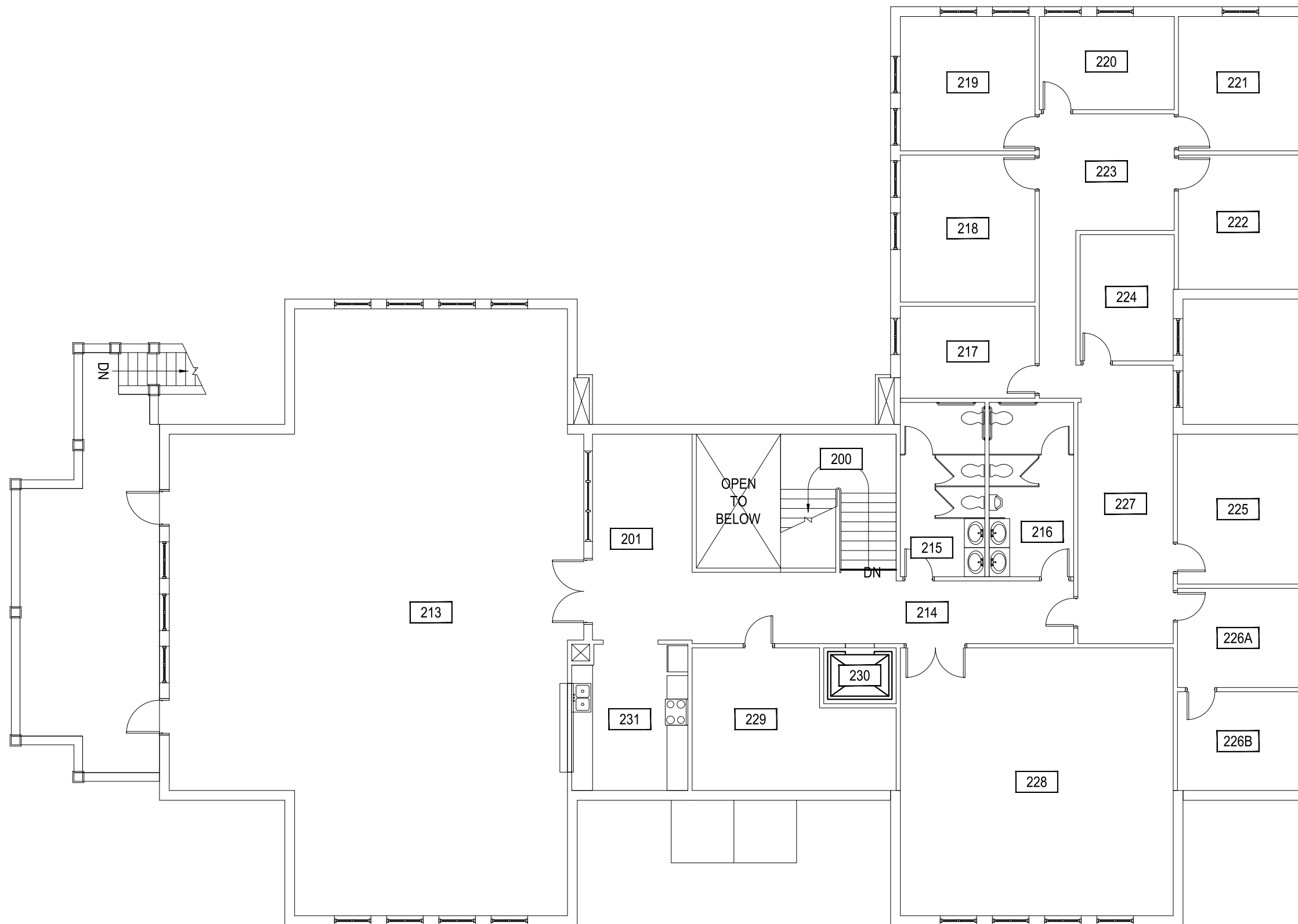
MSU ALUMNI FOUNDATION CENTER - FIRST LEVEL

SCALE: 3/32" = 1'



M MONTANA
STATE UNIVERSITY
CAMPUS PLANNING,
DESIGN & CONSTRUCTION
BOZEMAN, MONTANA
PHONE: 406.994.5413 FAX: 406.994.5665

INDEX #
79
BUILDING #
900

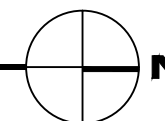


Jan 27, 2015 - 3:32pm - 900_A2.dwg
 C:\Users\gary.grame\appdata\local\temp\AcPublish_6940\

1

MSU ALUMNI FOUNDATION CENTER - SECOND LEVEL

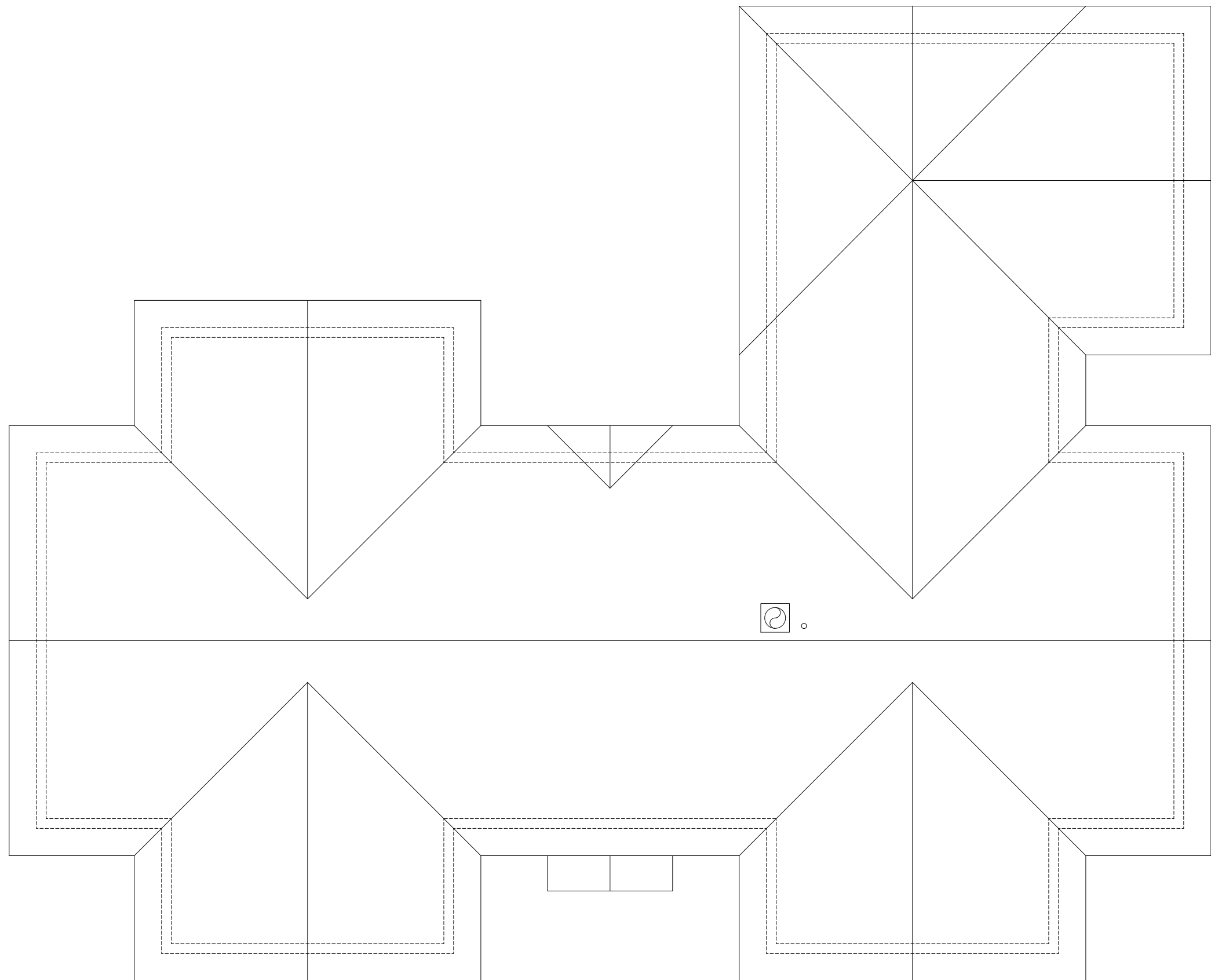
SCALE: 3/32" = 1'



M MONTANA
 STATE UNIVERSITY
 CAMPUS PLANNING,
 DESIGN & CONSTRUCTION
 BOZEMAN, MONTANA
 PHONE: 406.994.5413 FAX: 406.994.5665

| | |
|------------|-----|
| INDEX # | 79 |
| BUILDING # | 900 |

Jan 27, 2015 - 3:33pm - 900_AR.dwg
C:\Users\gary.grame\appdata\local\temp\AcPublish_6940\



1 MSU ALUMNI FOUNDATION CENTER - ROOF LEVEL
SCALE: 3/32" = 1'



M MONTANA STATE UNIVERSITY
CAMPUS PLANNING,
DESIGN & CONSTRUCTION
BOZEMAN, MONTANA
PHONE: 406.994.5413 FAX: 406.994.5665

| | |
|------------|-----|
| INDEX # | 79 |
| BUILDING # | 900 |