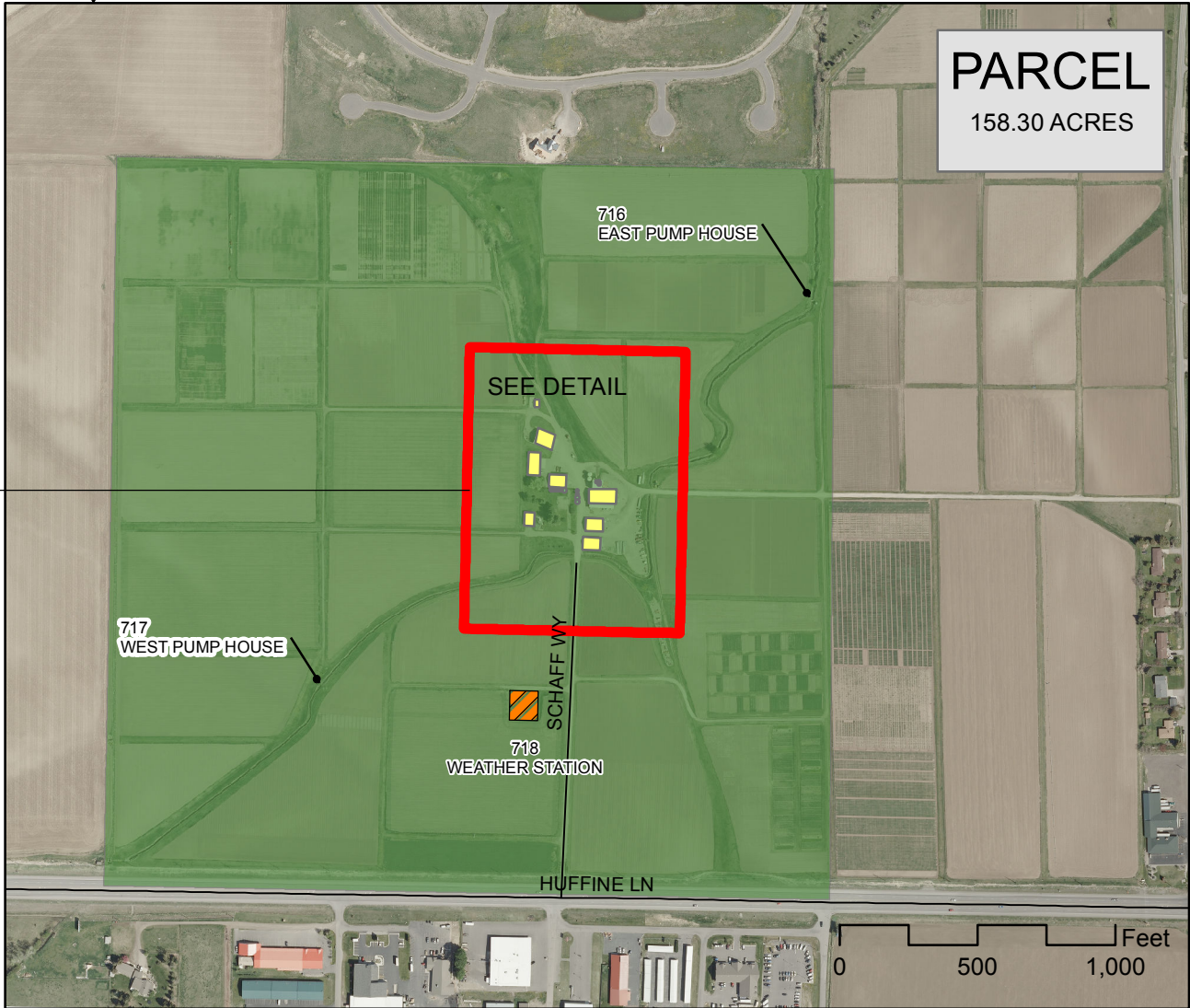
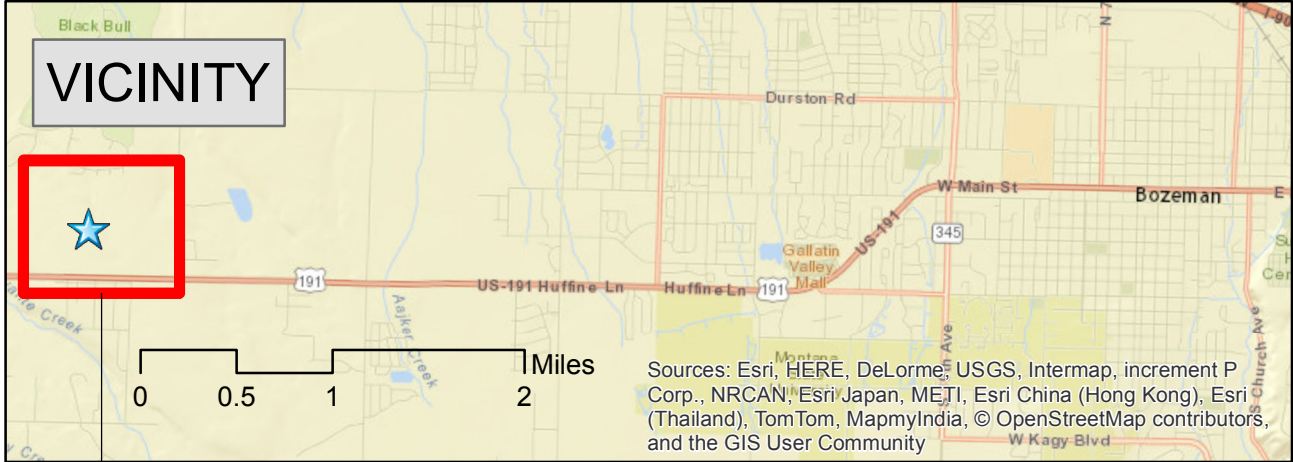
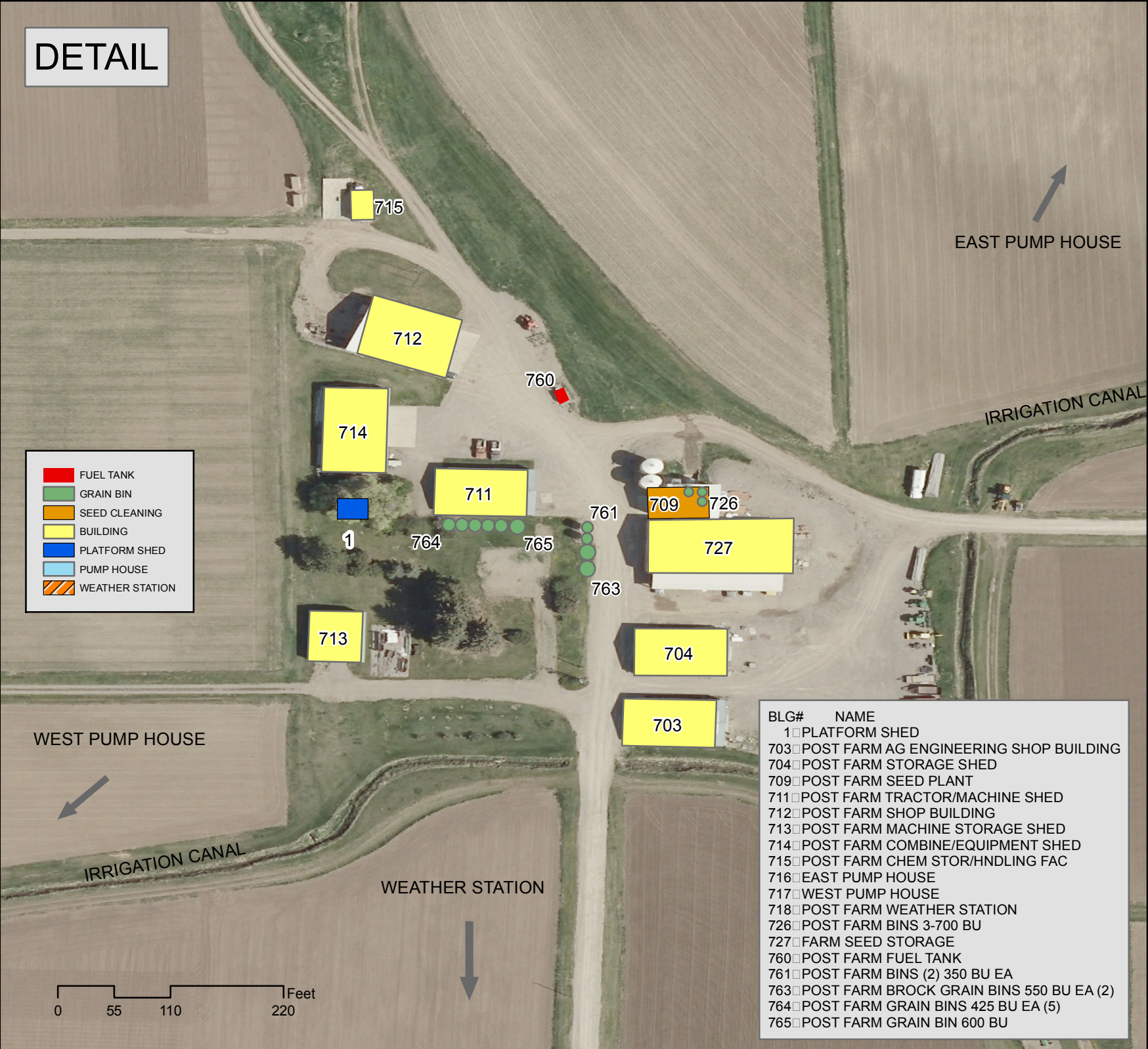


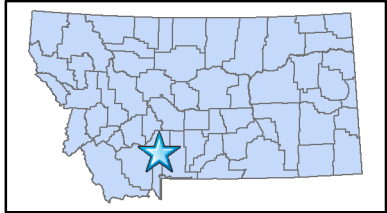
Montana AES Post Farm



Drawn by Christian Black
 Source: Montana GIS Portal <http://gisportal.msl.mt.gov>
 Facilities Inventory updated June 2015
 Contact CPDC Analyst Matt Hume

45°40'24.8"N 111°09'14.6"W
 45.673559, -111.154068

321 SCHAFF WAY
 BOZEMAN, MT 59718



MONTANA STATE UNIVERSITY

Montana State University
 Campus Planning, Design & Construction

This product is for informational purposes and may not have been prepared for, or be suitable for, legal, engineering or surveying purposes. Users of this information should review or consult the primary data and information sources to ascertain the usability of the information.

Building Pictures of Post Farm

Pictures ordered by building number except where noted

Photos originally taken 1/2011, verified to be depict buildings' current use and appearance 5/2015. Updated photos taken after 2011 are dated.

Sections

1. Building Photos – Interior and Exterior Photos
2. Structures on Site that Are Not Buildings – Bins, Propane Tanks
3. Other Site Issues

Interior and Exterior Photos of Buildings

1. BUILDING PHOTOS



Bldg #703 - Ag Engineer Shop Building



Bldg #703 - Ag Engineer Building



Bldg #704 - Storage Shed





Bldg #712 - Shop



Bldg #713 - Machine Storage Shed



Bldg #713 - Machine Storage Shed



Bldg #714 - Equipment Storage (donated by USDA)



Bldg #714 - Equipment Storage (donated by USDA)



Bldg #715 - Chemical Storage / Handling Facility





Eastside shot of buildings – bldg #s 727, 704, 703

Bins, Propane Tanks, Other

2. STRUCTURES ON SITE THAT ARE NOT BUILDINGS



Shed – No bldg #



Bldg #718 - Weather Station



Bldg #760 - Fuel Tank (709, 727, & 704 also in picture)



Bldg #761 - Bins (2) – 350 BU



Bldg #762 - Bins (2) – 2200 BU

Fencing, drainage issues

3. OTHER SITE ISSUES



Damage siding from lawnmower



Irrigation Canal (Erosion Issues starting to occur)



More Irrigation Canal Pictures