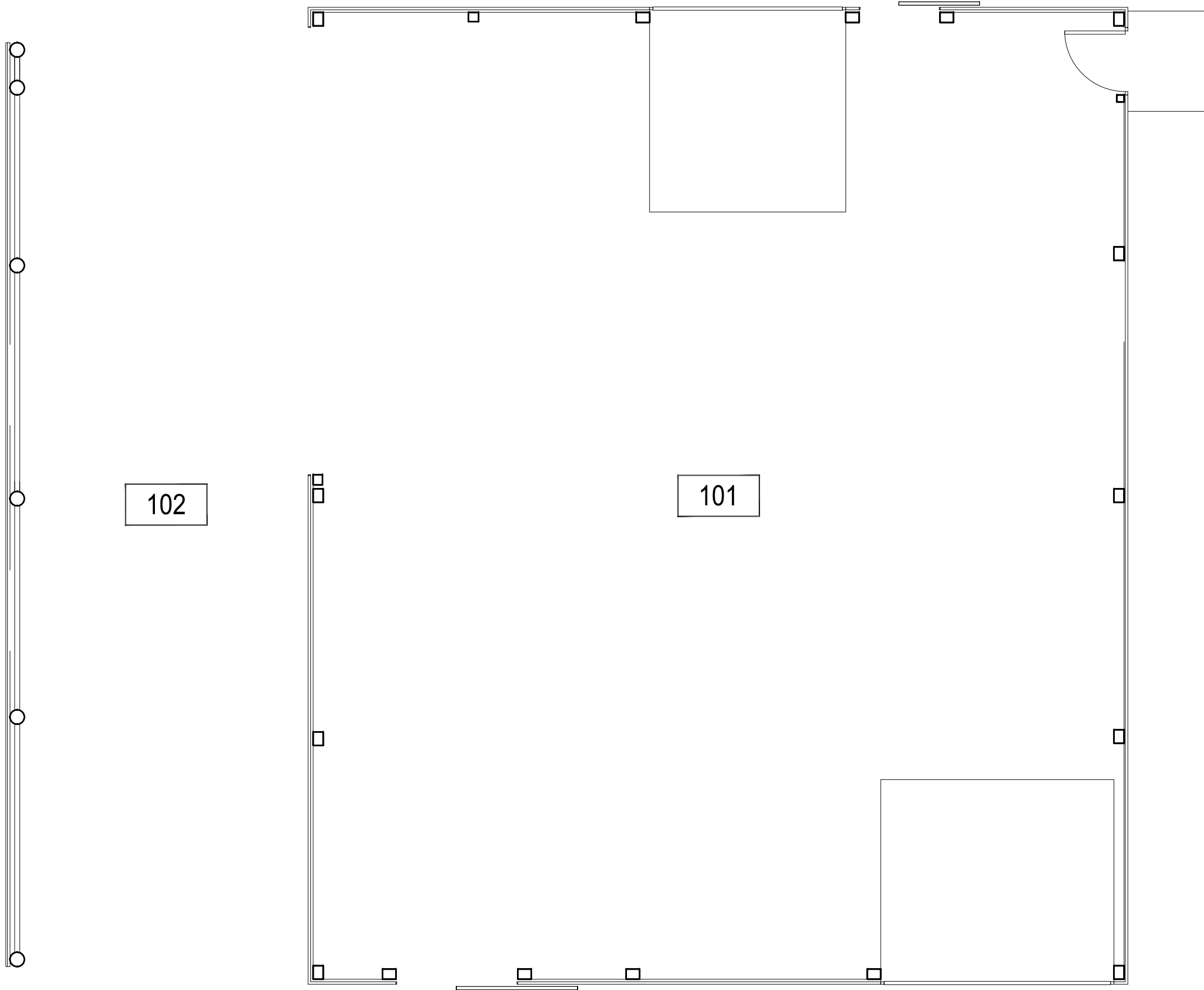


Dec 27, 2016 - 11:00am - 687-A1.dwg  
E:\Agfield Working Facility (Bldg Plan Book)



1

AGFIELD WORKING FACILITY - FIRST LEVEL

SCALE: 3/16" = 1'



**M** MONTANA  
STATE UNIVERSITY  
CAMPUS PLANNING,  
DESIGN & CONSTRUCTION  
BOZEMAN, MONTANA  
PHONE: 406.994.5413 FAX: 406.994.5665

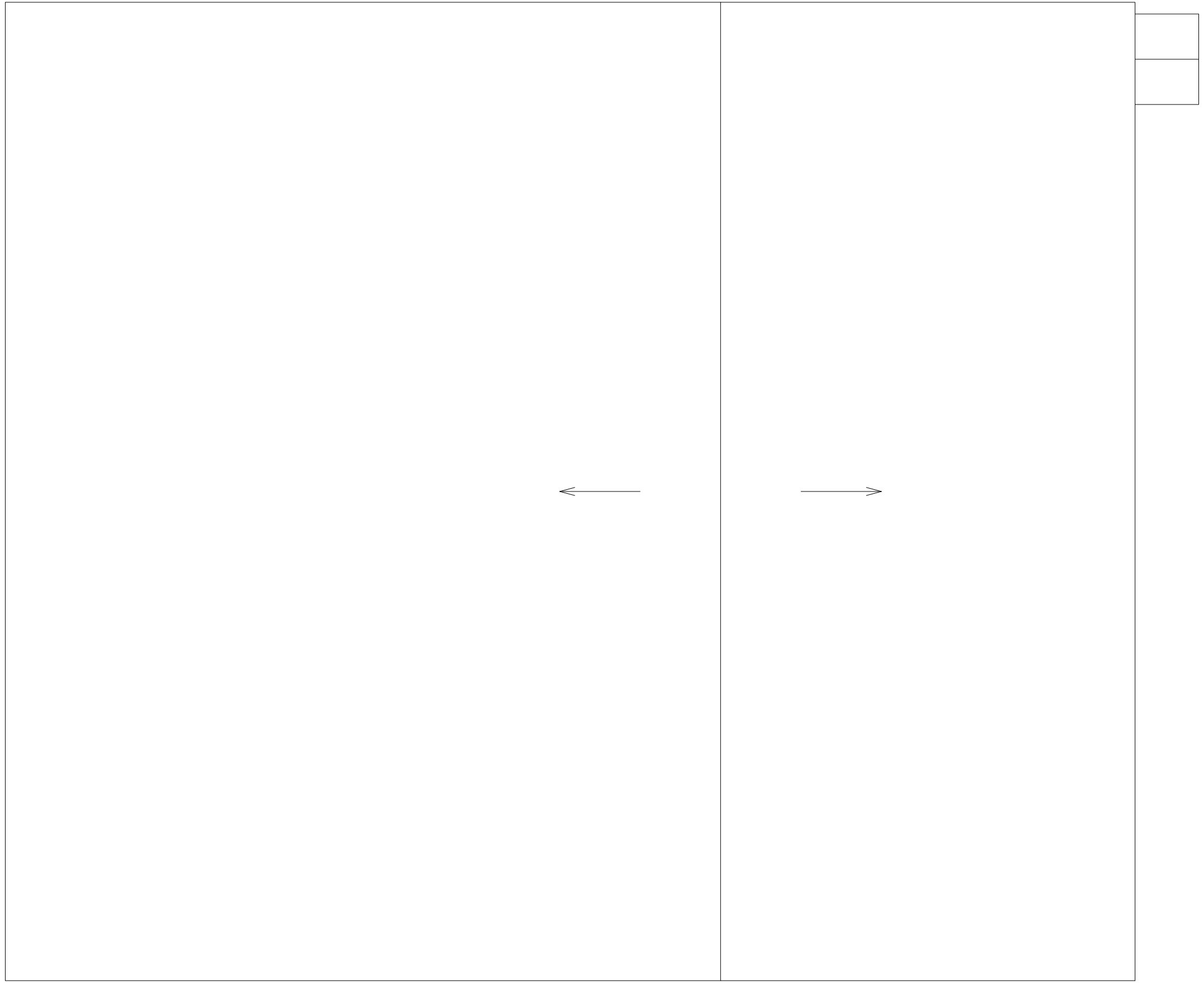
INDEX #

**114**

BUILDING #

**687**

Dec 27, 2016 - 11:00am - 687-AR.dwg  
H:\Agfield Working Facility\Bldg Plan Book\



1

AGFIELD WORKING FACILITY - ROOF LEVEL

SCALE: 3/16" = 1'



**M** MONTANA  
STATE UNIVERSITY  
CAMPUS PLANNING,  
DESIGN & CONSTRUCTION  
BOZEMAN, MONTANA  
PHONE: 406.994.5413 FAX: 406.994.5665

INDEX #

**114**

BUILDING #

**687**